

# WIA Annual Report (ETA Form 9091)

## Statewide PY 2008

### Adult Program Results

Reported Information	Negotiated Performance Level (80%)	Actual Performance	Numerator / Denominator
Entered Employment Rate	86.0% (68.8%)	62.0%	2,062 3,326
Employment Retention Rate	84.0% (67.2%)	83.1%	1,620 1,949
Average Earnings	\$10,200.0 (\$8,160.0)	\$11,583.8	18,232,877 1,574

### Adult Special Populations

Reported Information	Public Assistance Recipients Receiving Intensive or Training Services		Veterans		Individuals with Disabilities		Older Individuals	
Entered Employment Rate	69.8%	346 496	55.4%	168 303	65.3%	109 167	52.6%	210 399
Employment Retention Rate	78.5%	322 410	81.1%	107 132	78.7%	129 164	80.0%	136 170
Average Earnings	\$10,158.2	3,088,095 304	\$13,485.3	1,402,470 104	\$10,481.3	1,320,641 126	\$11,307.4	1,503,883 133

### Other Adult Populations

Reported Information	Individuals who Received Training Services		Individuals who only Received Core and Intensive Services	
Entered Employment Rate	75.9%	454 598	58.9%	1,608 2,728
Employment Retention Rate	86.5%	614 710	81.2%	1,006 1,239
Average Earnings	\$12,885.7	7,770,064 603	\$10,775.3	10,462,813 971

### Dislocated Worker Program Results

Reported Information	Negotiated Performance Level (80%)	Actual Performance	Numerator / Denominator
Entered Employment Rate	90.0% (72.0%)	71.9%	2,099 2,921
Employment Retention Rate	90.0% (72.0%)	88.2%	1,744 1,978
Average Earnings	\$13,000.0 (\$10,400.0)	\$14,487.1	24,801,958 1,712

### Dislocated Worker Special Populations

Reported Information	Veterans		Individuals with Disabilities		Older Individuals		Displaced Homemakers	
Entered Employment Rate	68.2%	189 277	66.4%	101 152	66.9%	327 489	68.4%	26 38
Employment Retention Rate	89.0%	146 164	81.4%	92 113	84.9%	264 311	75.7%	28 37
Average Earnings	\$16,139.1	2,291,756 142	\$14,947.9	1,300,464 87	\$13,211.3	3,434,945 260	\$9,879.5	276,625 28

\* Data suppressed for confidentiality purposes

# WIA Annual Report (ETA Form 9091)

## Statewide PY 2008

### Other Dislocated Workers

Reported Information	Individuals who Received Training Services		Individuals who only Received Core and Intensive Services	
Entered Employment Rate	80.0%	629 786	68.9%	1,470 2,135
Employment Retention Rate	88.9%	682 767	87.7%	1,062 1,211
Average Earnings	\$15,019.2	10,047,837 669	\$14,145.8	14,754,121 1,043

### Youth (14-21) Program Results

Reported Information	Negotiated Performance Level (80%)	Actual Performance	Numerator / Denominator
Placement in Employment or Education	70.0% (56.0%)	65.8%	905 1,376
Attainment of a Degree or Certificate	67.0% (53.6%)	72.0%	894 1,242
Literacy and Numeracy Gains	40.0% (32.0%)	32.1%	176 548

### Other Reported Information

Reported Information	Adults		Dislocated Workers	
12-Month Employment Retention	81.8%	1,247 1,525	88.1%	1,345 1,526
12-Month Earnings Change	\$4,172.0	6,036,884 1,447	87.7%	19,680,964 22,431,028
Entered Non-Traditional Employment	0.0%	0 2,062	0.0%	0 2,099
Wages At Entered Employment	\$418,670.6	8,373,411 2,000	\$586,452.9	12,045,742 2,054
Employment Related Training	4.2%	19 454	3.8%	24 629

### Participation Levels

Reported Information	Total Participants Served	Total Exiters
Total Adult Customers	161,460	64,427
Total Adult self-service only	40	*
WIA Adult	94,176	39,152
WIA Dislocated Worker	67,284	25,275
Total Youth (14-21)	5,575	1,629
Younger Youth (14-18)	4,194	1,217
Older Youth (19-21)	1,381	412
Out-of-School Youth	2,330	828
In-School Youth	3,245	801

\* Data suppressed for confidentiality purposes

State of Oregon - Department of Community Colleges and Workforce Development

Table O - Local Performance

Local Area Name: 00 - Statewide

		Served	Exited		
Total Participants	Adults	94,176	39,152		
	Dislocated Workers	67,284	25,275		
	Youth (14-21)	5,575	1,629		
		Negotiated	80% Neg	Actual	
Entered Employment Rate	Adults	86.0	68.8	62.0	N
	Dislocated Workers	90.0	72.0	71.9	N
		Negotiated	80% Neg	Actual	
Employment Retention Rate	Adults	84.0	67.2	83.1	M
	Dislocated Workers	90.0	72.0	88.2	M
		Negotiated	80% Neg	Actual	
Average Earnings	Adults	10,200.0	8,160.0	11,583.8	E
	Dislocated Workers	13,000.0	10,400.0	14,487.1	E
		Negotiated	80% Neg	Actual	
Placement in Employment or Education	Youth (14-21)	70.0	56.0	65.8	M
Attainment of a Degree or Certificate	Youth (14-21)	67.0	53.6	72.0	E
Literacy and Numeracy Gains	Youth (14-21)	40.0	32.0	32.1	M

Not Met	Met	Exceeded
2	4	3

Table O - Local Performance

Local Area Name: 02 - Worksystems Inc

		Served	Exited		
Total Participants	Adults	28,057	10,035		
	Dislocated Workers	23,873	7,452		
	Youth (14-21)	1,295	358		
		Negotiated	80% Neg	Actual	
Entered Employment Rate	Adults	86.0	68.8	75.5	M
	Dislocated Workers	90.0	72.0	81.9	M
		Negotiated	80% Neg	Actual	
Employment Retention Rate	Adults	84.0	67.2	84.8	E
	Dislocated Workers	90.0	72.0	88.3	M
		Negotiated	80% Neg	Actual	
Average Earnings	Adults	10,200.0	8,160.0	11,881.6	E
	Dislocated Workers	13,000.0	10,400.0	15,757.4	E
		Negotiated	80% Neg	Actual	
Placement in Employment or Education	Youth (14-21)	70.0	56.0	80.1	E
Attainment of a Degree or Certificate	Youth (14-21)	67.0	53.6	76.4	E
Literacy and Numeracy Gains	Youth (14-21)	40.0	32.0	35.0	M

Not Met	Met	Exceeded
0	4	5

State of Oregon - Department of Community Colleges and Workforce Development

Table O - Local Performance

Local Area Name: 03 - Enterprise for Employment & Education

		Served	Exited		
Total Participants	Adults	12,137	6,111		
	Dislocated Workers	5,726	2,378		
	Youth (14-21)	458	308		
		Negotiated	80% Neg	Actual	
Entered Employment Rate	Adults	86.0	68.8	54.5	N
	Dislocated Workers	90.0	72.0	57.1	N
		Negotiated	80% Neg	Actual	
Employment Retention Rate	Adults	84.0	67.2	85.6	E
	Dislocated Workers	90.0	72.0	92.0	E
		Negotiated	80% Neg	Actual	
Average Earnings	Adults	10,200.0	8,160.0	11,507.1	E
	Dislocated Workers	13,000.0	10,400.0	13,726.6	E
		Negotiated	80% Neg	Actual	
Placement in Employment or Education	Youth (14-21)	70.0	56.0	67.7	M
Attainment of a Degree or Certificate	Youth (14-21)	67.0	53.6	72.7	E
Literacy and Numeracy Gains	Youth (14-21)	40.0	32.0	7.1	N

Not Met	Met	Exceeded
3	1	5

State of Oregon - Department of Community Colleges and Workforce Development

Table O - Local Performance

Local Area Name: 04 - Community Service Consortium

		Served	Exited		
Total Participants	Adults	12,155	4,021		
	Dislocated Workers	9,656	2,988		
	Youth (14-21)	466	109		
		Negotiated	80% Neg	Actual	
Entered Employment Rate	Adults	86.0	68.8	72.1	M
	Dislocated Workers	90.0	72.0	76.5	M
		Negotiated	80% Neg	Actual	
Employment Retention Rate	Adults	84.0	67.2	75.9	M
	Dislocated Workers	90.0	72.0	88.0	M
		Negotiated	80% Neg	Actual	
Average Earnings	Adults	10,200.0	8,160.0	9,309.1	E
	Dislocated Workers	13,000.0	10,400.0	14,763.7	E
		Negotiated	80% Neg	Actual	
Placement in Employment or Education	Youth (14-21)	70.0	56.0	76.5	E
Attainment of a Degree or Certificate	Youth (14-21)	67.0	53.6	65.3	M
Literacy and Numeracy Gains	Youth (14-21)	40.0	32.0	26.7	N

Not Met	Met	Exceeded
1	5	3

Table O - Local Performance

Local Area Name: 05 - Lane Workforce Partnership

		Served	Exited		
Total Participants	Adults	8,316	2,479		
	Dislocated Workers	4,705	1,364		
	Youth (14-21)	717	112		
		Negotiated	80% Neg	Actual	
Entered Employment Rate	Adults	86.0	68.8	70.6	M
	Dislocated Workers	90.0	72.0	74.1	M
		Negotiated	80% Neg	Actual	
Employment Retention Rate	Adults	84.0	67.2	84.3	E
	Dislocated Workers	90.0	72.0	91.8	E
		Negotiated	80% Neg	Actual	
Average Earnings	Adults	10,200.0	8,160.0	12,162.4	E
	Dislocated Workers	13,000.0	10,400.0	15,423.8	E
		Negotiated	80% Neg	Actual	
Placement in Employment or Education	Youth (14-21)	70.0	56.0	67.3	M
Attainment of a Degree or Certificate	Youth (14-21)	67.0	53.6	82.7	E
Literacy and Numeracy Gains	Youth (14-21)	40.0	32.0	40.0	M

Not Met	Met	Exceeded
0	4	5

Table O - Local Performance

Local Area Name: 08 - Rogue Valley Workforce Development Council

		Served	Exited		
Total Participants	Adults	3,694	2,146		
	Dislocated Workers	2,714	1,562		
	Youth (14-21)	187	63		
		Negotiated	80% Neg	Actual	
Entered Employment Rate	Adults	86.0	68.8	63.9	N
	Dislocated Workers	90.0	72.0	80.9	M
		Negotiated	80% Neg	Actual	
Employment Retention Rate	Adults	84.0	67.2	80.0	M
	Dislocated Workers	90.0	72.0	81.8	M
		Negotiated	80% Neg	Actual	
Average Earnings	Adults	10,200.0	8,160.0	9,579.9	E
	Dislocated Workers	13,000.0	10,400.0	11,706.8	E
		Negotiated	80% Neg	Actual	
Placement in Employment or Education	Youth (14-21)	70.0	56.0	59.8	M
Attainment of a Degree or Certificate	Youth (14-21)	67.0	53.6	60.0	M
Literacy and Numeracy Gains	Youth (14-21)	40.0	32.0	28.9	N

Not Met	Met	Exceeded
2	5	2



**Table O - Local Performance**

**Local Area Name: 16 - Workforce Investment Council of Clackamas County**

			<b>Served</b>	<b>Exited</b>	
Total Participants	Adults		7,429	2,771	
	Dislocated Workers		6,226	2,118	
	Youth (14-21)		532	229	
		<b>Negotiated</b>	<b>80% Neg</b>	<b>Actual</b>	
Entered Employment Rate	Adults	86.0	68.8	65.4	<i>N</i>
	Dislocated Workers	90.0	72.0	77.0	<i>M</i>
		<b>Negotiated</b>	<b>80% Neg</b>	<b>Actual</b>	
Employment Retention Rate	Adults	84.0	67.2	90.2	<i>E</i>
	Dislocated Workers	90.0	72.0	85.6	<i>M</i>
		<b>Negotiated</b>	<b>80% Neg</b>	<b>Actual</b>	
Average Earnings	Adults	10,200.0	8,160.0	13,010.0	<i>E</i>
	Dislocated Workers	13,000.0	10,400.0	13,941.5	<i>E</i>
		<b>Negotiated</b>	<b>80% Neg</b>	<b>Actual</b>	
Placement in Employment or Education	Youth (14-21)	70.0	56.0	60.4	<i>M</i>
Attainment of a Degree or Certificate	Youth (14-21)	67.0	53.6	63.1	<i>M</i>
Literacy and Numeracy Gains	Youth (14-21)	40.0	32.0	50.0	<i>E</i>

Not Met	Met	Exceeded
1	4	4

State of Oregon - Department of Community Colleges and Workforce Development

Table O - Local Performance

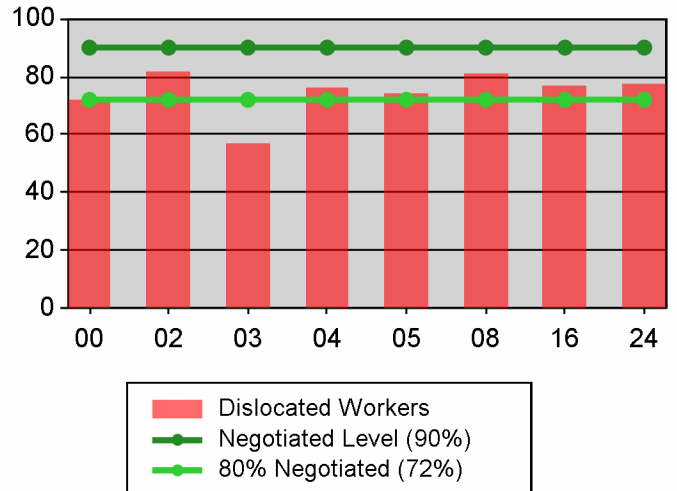
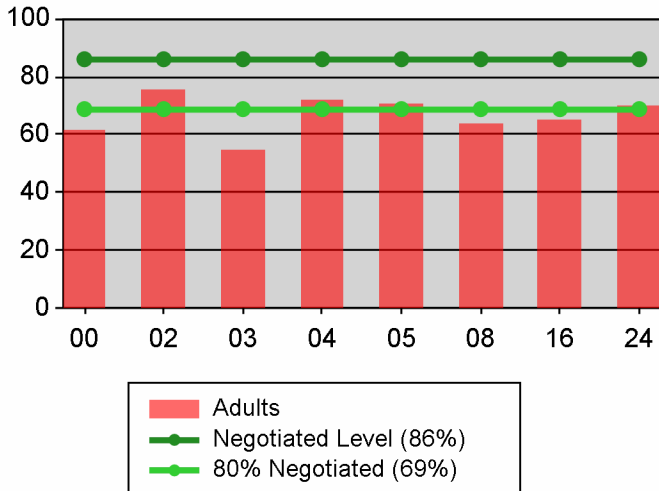
Local Area Name: 24 - The Oregon Consortium/Workforce Alliance

		Served	Exited		
Total Participants	Adults	22,388	11,589		
	Dislocated Workers	14,384	7,413		
	Youth (14-21)	1,920	450		
		Negotiated	80% Neg	Actual	
Entered Employment Rate	Adults	86.0	68.8	70.1	M
	Dislocated Workers	90.0	72.0	77.9	M
		Negotiated	80% Neg	Actual	
Employment Retention Rate	Adults	84.0	67.2	77.3	M
	Dislocated Workers	90.0	72.0	87.1	M
		Negotiated	80% Neg	Actual	
Average Earnings	Adults	10,200.0	8,160.0	11,271.6	E
	Dislocated Workers	13,000.0	10,400.0	13,689.9	E
		Negotiated	80% Neg	Actual	
Placement in Employment or Education	Youth (14-21)	70.0	56.0	55.9	N
Attainment of a Degree or Certificate	Youth (14-21)	67.0	53.6	72.3	E
Literacy and Numeracy Gains	Youth (14-21)	40.0	32.0	27.6	N

Not Met	Met	Exceeded
2	4	3

Table O - Local Performance

Entered Employment Rate



Retention Rate

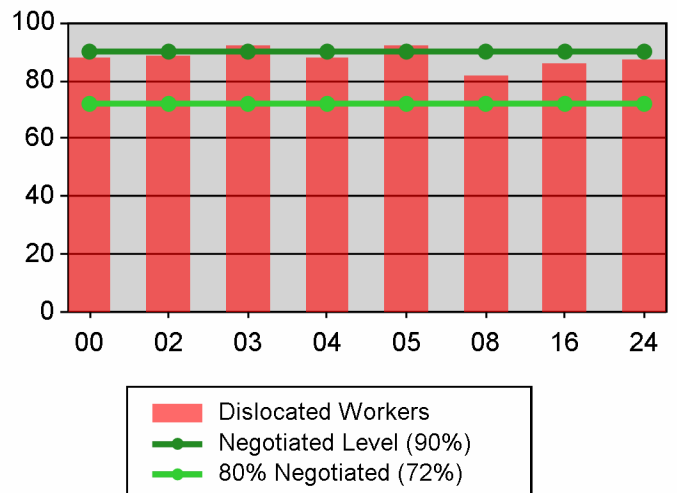
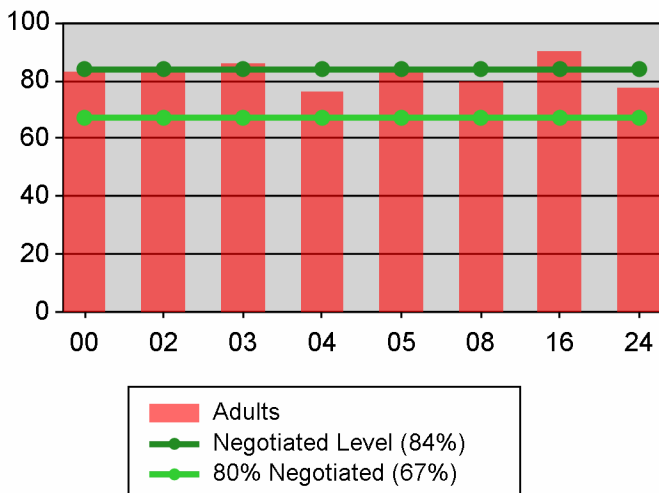


Table O - Local Performance

Youth

