

# WIA Annual Report (ETA Form 9091)

Statewide PY 2009

## Adult Program Results

Reported Information	Negotiated Performance Level (80%)	Actual Performance	Numerator / Denominator
Entered Employment Rate	57.0% (45.6%)	43.4%	33,747 77,751
Employment Retention Rate	81.0% (64.8%)	75.5%	14,312 18,968
Average Earnings	\$10,200.0 (\$8,160.0)	\$12,707.1	181,711,469 14,300

## Adult Special Populations

Reported Information	Public Assistance Recipients Receiving Intensive or Training Services		Veterans		Individuals with Disabilities		Older Individuals	
Entered Employment Rate	42.1%	993 2,358	38.9%	2,367 6,086	24.5%	428 1,744	35.3%	3,762 10,672
Employment Retention Rate	73.6%	476 647	75.5%	1,049 1,390	65.3%	145 222	75.4%	1,601 2,122
Average Earnings	\$10,007.6	4,743,614 474	\$14,317.1	15,004,304 1,048	\$10,606.5	1,527,342 144	\$13,085.4	20,910,424 1,598

## Other Adult Populations

Reported Information	Individuals who Received Training Services		Individuals who only Received Core and Intensive Services	
Entered Employment Rate	59.6%	458 769	43.2%	33,289 76,982
Employment Retention Rate	80.7%	511 633	75.3%	13,801 18,335
Average Earnings	\$12,643.0	6,397,376 506	\$12,709.4	175,314,093 13,794

## Dislocated Worker Program Results

Reported Information	Negotiated Performance Level (80%)	Actual Performance	Numerator / Denominator
Entered Employment Rate	57.0% (45.6%)	43.5%	25,071 57,576
Employment Retention Rate	81.0% (64.8%)	73.0%	8,005 10,971
Average Earnings	\$13,000.0 (\$10,400.0)	\$13,353.3	106,799,402 7,998

## Dislocated Worker Special Populations

Reported Information	Veterans		Individuals with Disabilities		Older Individuals		Displaced Homemakers	
Entered Employment Rate	40.3%	2,267 5,630	27.7%	379 1,367	36.4%	3,509 9,648	39.9%	3,467 8,683
Employment Retention Rate	71.7%	709 989	65.7%	109 166	71.1%	1,077 1,514	69.3%	767 1,106
Average Earnings	\$14,499.3	10,250,980 707	\$11,659.5	1,270,890 109	\$13,578.2	14,610,133 1,076	\$10,625.8	8,149,993 767

\* Data suppressed for confidentiality purposes

# WIA Annual Report (ETA Form 9091)

**Statewide PY 2009**

## Other Dislocated Workers

Reported Information	Individuals who Recieved Training Services		Individuals who only Received Core and Intensive Services	
Entered Employment Rate	58.5%	558 954	43.3%	24,513 56,622
Employment Retention Rate	84.3%	456 541	72.4%	7,549 10,430
Average Earnings	\$13,402.6	6,057,968 452	\$13,350.3	100,741,434 7,546

## Youth (14-21) Program Results

Reported Information	Negotiated Performance Level (80%)	Actual Performance	Numerator / Denominator
Placement in Employment or Education	70.0% (56.0%)	62.8%	666 1,060
Attainment of a Degree or Certificate	67.0% (53.6%)	72.7%	702 965
Literacy and Numeracy Gains	30.0% (24.0%)	31.3%	183 584

## Other Reported Information

Reported Information	Adults		Dislocated Workers	
12-Month Employment Retention	74.3%	5,043 6,784	73.8%	2,847 3,856
12-Month Earnings Change	(\$912.3)	-6,130,504 6,720	74.8%	38,329,828 51,242,434
Entered Non-Traditional Employment	0.0%	0 33,747	0.0%	0 25,071
Wages At Entered Employment	\$482,086.5	162,655,993 33,740	\$518,055.7	129,829,929 25,061
Employment Related Training	0.4%	* *	1.4%	8 558

## Participation Levels

Reported Information	Total Participants Served	Total Exiters
Total Adult Customers	362,117	329,059
Total Adult self-service only	156,627	161,860
WIA Adult	353,929	311,615
WIA Dislocated Worker	263,091	220,019
Total Youth (14-21)	3,603	1,445
Younger Youth (14-18)	2,563	1,024
Older Youth (19-21)	1,040	421
Out-of-School Youth	1,842	816
In-School Youth	1,761	629

Performance was Calculated: 9/28/2010 9:24:40 AM

\* Data suppressed for confidentiality purposes

Run Date: 9/28/2010 10:09:11 AM

Page 2 of 2

State of Oregon - Department of Community Colleges and Workforce Development

**Table O - Local Performance (Common Exit)**

Program Year 2009 - 4th Qtr (Year-to-Date)

Local Area Name: 00 - Statewide

07/01/2009 - 06/30/2010		Served	Exited		
<b>Total Participants</b>	Adults	353,929	311,615		
	DW	263,091	220,019		
	Youth (14-21)	3,603	1,445		
10/01/2008 - 09/30/2009		N	D	Actual	Negotiated (80%)
<b>Entered Employment Rate</b>	Adults	33,747	77,751	43.4 N	57.0 (45.6)
	DW	25,071	57,576	43.5 N	57.0 (45.6)
	NEG	213	312	68.3	
04/01/2008 - 03/31/2009		N	D	Actual	Negotiated (80%)
<b>Employment Retention Rate</b>	Adults	14,312	18,968	75.5 M	81.0 (64.8)
	DW	8,005	10,971	73.0 M	81.0 (64.8)
	NEG	138	182	75.8	
04/01/2008 - 03/31/2009		N	D	Actual	Negotiated (80%)
<b>Average Earnings</b>	Adults	181,711,469	14,300	12,707.1 E	10,200.0 (8,160.0)
	DW	106,799,402	7,998	13,353.3 E	13,000.0 (10,400.0)
	NEG	1,804,557	137	13,171.9	
10/01/2008 - 09/30/2009		N	D	Actual	Negotiated (80%)
<b>Placement in Employment or Education</b>	Youth (14-21)	666	1,060	62.8 M	70.0 (56.0)
<b>Attainment of a Degree or Certificate</b>	Youth (14-21)	702	965	72.7 E	67.0 (53.6)
07/01/2009 - 06/30/2010		N	D	Actual	Negotiated (80%)
<b>Literacy and Numeracy Gains</b>	Youth (14-21)	183	584	31.3 E	30.0 (24.0)

Not Met	Met	Exceeded
2	3	4

State of Oregon - Department of Community Colleges and Workforce Development

**Table O - Local Performance (Common Exit)**

Program Year 2009 - 4th Qtr (Year-to-Date)

**Local Area Name: 02 - Worksystems Inc**

07/01/2009 - 06/30/2010		Served	Exited		
<b>Total Participants</b>	Adults	47,852	33,044		
	DW	44,004	30,138		
	Youth (14-21)	758	299		
10/01/2008 - 09/30/2009		N	D	Actual	Negotiated (80%)
<b>Entered Employment Rate</b>	Adults	9,117	21,188	43.0 <i>N</i>	57.0 (45.6)
	DW	8,437	19,719	42.8 <i>N</i>	57.0 (45.6)
	NEG	0	0		
04/01/2008 - 03/31/2009		N	D	Actual	Negotiated (80%)
<b>Employment Retention Rate</b>	Adults	2,802	3,769	74.3 <i>M</i>	81.0 (64.8)
	DW	2,222	3,049	72.9 <i>M</i>	81.0 (64.8)
	NEG	0	0		
04/01/2008 - 03/31/2009		N	D	Actual	Negotiated (80%)
<b>Average Earnings</b>	Adults	42,075,402	2,796	15,048.4 <i>E</i>	10,200.0 (8,160.0)
	DW	34,958,249	2,221	15,739.9 <i>E</i>	13,000.0 (10,400.0)
	NEG	0	0		
10/01/2008 - 09/30/2009		N	D	Actual	Negotiated (80%)
<b>Placement in Employment or Education</b>	Youth (14-21)	186	224	83.0 <i>E</i>	70.0 (56.0)
<b>Attainment of a Degree or Certificate</b>	Youth (14-21)	187	228	82.0 <i>E</i>	67.0 (53.6)
07/01/2009 - 06/30/2010		N	D	Actual	Negotiated (80%)
<b>Literacy and Numeracy Gains</b>	Youth (14-21)	67	154	43.5 <i>E</i>	30.0 (24.0)

<i>Not Met</i>	<i>Met</i>	<i>Exceeded</i>
2	2	5

State of Oregon - Department of Community Colleges and Workforce Development

**Table O - Local Performance (Common Exit)**

Program Year 2009 - 4th Qtr (Year-to-Date)

**Local Area Name: 03 - Job Growers Incorporated**

07/01/2009 - 06/30/2010		Served	Exited		
<b>Total Participants</b>	Adults	28,696	23,109		
	DW	16,629	10,563		
	Youth (14-21)	526	228		
10/01/2008 - 09/30/2009		N	D	Actual	Negotiated (80%)
<b>Entered Employment Rate</b>	Adults	4,698	10,681	44.0 N	57.0 (45.6)
	DW	2,119	5,073	41.8 N	57.0 (45.6)
	NEG	39	49	79.6	
04/01/2008 - 03/31/2009		N	D	Actual	Negotiated (80%)
<b>Employment Retention Rate</b>	Adults	2,727	3,632	75.1 M	81.0 (64.8)
	DW	769	1,109	69.3 M	81.0 (64.8)
	NEG	38	49	77.6	
04/01/2008 - 03/31/2009		N	D	Actual	Negotiated (80%)
<b>Average Earnings</b>	Adults	30,611,700	2,723	11,241.9 E	10,200.0 (8,160.0)
	DW	7,941,578	766	10,367.6 N	13,000.0 (10,400.0)
	NEG	516,679	37	13,964.3	
10/01/2008 - 09/30/2009		N	D	Actual	Negotiated (80%)
<b>Placement in Employment or Education</b>	Youth (14-21)	91	159	57.2 M	70.0 (56.0)
<b>Attainment of a Degree or Certificate</b>	Youth (14-21)	67	93	72.0 E	67.0 (53.6)
07/01/2009 - 06/30/2010		N	D	Actual	Negotiated (80%)
<b>Literacy and Numeracy Gains</b>	Youth (14-21)	14	89	15.7 N	30.0 (24.0)

Not Met	Met	Exceeded
4	3	2

State of Oregon - Department of Community Colleges and Workforce Development

**Table O - Local Performance (Common Exit)**

Program Year 2009 - 4th Qtr (Year-to-Date)

**Local Area Name: 04 - Community Service Consortium**

07/01/2009 - 06/30/2010		Served	Exited		
<b>Total Participants</b>	Adults	18,369	12,087		
	DW	15,817	10,151		
	Youth (14-21)	379	89		
10/01/2008 - 09/30/2009		N	D	Actual	Negotiated (80%)
<b>Entered Employment Rate</b>	Adults	2,945	6,333	46.5 M	57.0 (45.6)
	DW	2,682	5,793	46.3 M	57.0 (45.6)
	NEG	21	33	63.6	
04/01/2008 - 03/31/2009		N	D	Actual	Negotiated (80%)
<b>Employment Retention Rate</b>	Adults	1,131	1,470	76.9 M	81.0 (64.8)
	DW	822	1,094	75.1 M	81.0 (64.8)
	NEG	36	42	85.7	
04/01/2008 - 03/31/2009		N	D	Actual	Negotiated (80%)
<b>Average Earnings</b>	Adults	14,524,278	1,131	12,842.0 E	10,200.0 (8,160.0)
	DW	10,295,516	822	12,525.0 M	13,000.0 (10,400.0)
	NEG	502,273	36	13,952.0	
10/01/2008 - 09/30/2009		N	D	Actual	Negotiated (80%)
<b>Placement in Employment or Education</b>	Youth (14-21)	35	65	53.8 N	70.0 (56.0)
<b>Attainment of a Degree or Certificate</b>	Youth (14-21)	34	56	60.7 M	67.0 (53.6)
07/01/2009 - 06/30/2010		N	D	Actual	Negotiated (80%)
<b>Literacy and Numeracy Gains</b>	Youth (14-21)	10	59	16.9 N	30.0 (24.0)

Not Met	Met	Exceeded
2	6	1

State of Oregon - Department of Community Colleges and Workforce Development

**Table O - Local Performance (Common Exit)**

Program Year 2009 - 4th Qtr (Year-to-Date)

**Local Area Name: 05 - Lane Workforce Partnership**

07/01/2009 - 06/30/2010		Served	Exited		
<b>Total Participants</b>	Adults	21,478	18,964		
	DW	13,522	9,404		
	Youth (14-21)	316	126		
10/01/2008 - 09/30/2009		N	D	Actual	Negotiated (80%)
<b>Entered Employment Rate</b>	Adults	2,900	7,804	37.2 <i>N</i>	57.0 (45.6)
	DW	1,846	5,023	36.8 <i>N</i>	57.0 (45.6)
	NEG	*	*	20.0	
04/01/2008 - 03/31/2009		N	D	Actual	Negotiated (80%)
<b>Employment Retention Rate</b>	Adults	877	1,137	77.1 <i>M</i>	81.0 (64.8)
	DW	400	553	72.3 <i>M</i>	81.0 (64.8)
	NEG	0	0		
04/01/2008 - 03/31/2009		N	D	Actual	Negotiated (80%)
<b>Average Earnings</b>	Adults	10,788,008	877	12,301.0 <i>E</i>	10,200.0 (8,160.0)
	DW	4,780,675	400	11,951.7 <i>M</i>	13,000.0 (10,400.0)
	NEG	0	0		
10/01/2008 - 09/30/2009		N	D	Actual	Negotiated (80%)
<b>Placement in Employment or Education</b>	Youth (14-21)	64	98	65.3 <i>M</i>	70.0 (56.0)
<b>Attainment of a Degree or Certificate</b>	Youth (14-21)	69	92	75.0 <i>E</i>	67.0 (53.6)
07/01/2009 - 06/30/2010		N	D	Actual	Negotiated (80%)
<b>Literacy and Numeracy Gains</b>	Youth (14-21)	21	39	53.8 <i>E</i>	30.0 (24.0)

<i>Not Met</i>	<i>Met</i>	<i>Exceeded</i>
2	4	3

State of Oregon - Department of Community Colleges and Workforce Development

**Table O - Local Performance (Common Exit)**

Program Year 2009 - 4th Qtr (Year-to-Date)

**Local Area Name: 08 - The Job Council**

07/01/2009 - 06/30/2010		Served	Exited		
<b>Total Participants</b>	Adults	13,631	9,889		
	DW	8,928	5,381		
	Youth (14-21)	301	89		
10/01/2008 - 09/30/2009		N	D	Actual	Negotiated (80%)
<b>Entered Employment Rate</b>	Adults	1,860	4,444	41.9 N	57.0 (45.6)
	DW	1,206	2,991	40.3 N	57.0 (45.6)
	NEG	0	0		
04/01/2008 - 03/31/2009		N	D	Actual	Negotiated (80%)
<b>Employment Retention Rate</b>	Adults	896	1,156	77.5 M	81.0 (64.8)
	DW	516	691	74.7 M	81.0 (64.8)
	NEG	0	0		
04/01/2008 - 03/31/2009		N	D	Actual	Negotiated (80%)
<b>Average Earnings</b>	Adults	10,212,454	896	11,397.8 E	10,200.0 (8,160.0)
	DW	5,501,025	516	10,660.9 M	13,000.0 (10,400.0)
	NEG	0	0		
10/01/2008 - 09/30/2009		N	D	Actual	Negotiated (80%)
<b>Placement in Employment or Education</b>	Youth (14-21)	37	62	59.7 M	70.0 (56.0)
<b>Attainment of a Degree or Certificate</b>	Youth (14-21)	26	40	65.0 M	67.0 (53.6)
07/01/2009 - 06/30/2010		N	D	Actual	Negotiated (80%)
<b>Literacy and Numeracy Gains</b>	Youth (14-21)	28	72	38.9 E	30.0 (24.0)

Not Met	Met	Exceeded
2	5	2



State of Oregon - Department of Community Colleges and Workforce Development

**Table O - Local Performance (Common Exit)**

Program Year 2009 - 4th Qtr (Year-to-Date)

**Local Area Name: 16 - Workforce Investment Council of Clackamas County**

07/01/2009 - 06/30/2010		Served	Exited		
<b>Total Participants</b>	Adults	13,029	8,738		
	DW	12,152	8,050		
	Youth (14-21)	361	190		
10/01/2008 - 09/30/2009		N	D	Actual	Negotiated (80%)
<b>Entered Employment Rate</b>	Adults	2,597	5,812	44.7 N	57.0 (45.6)
	DW	2,430	5,482	44.3 N	57.0 (45.6)
	NEG	0	0		
04/01/2008 - 03/31/2009		N	D	Actual	Negotiated (80%)
<b>Employment Retention Rate</b>	Adults	868	1,121	77.4 M	81.0 (64.8)
	DW	732	950	77.1 M	81.0 (64.8)
	NEG	0	0		
04/01/2008 - 03/31/2009		N	D	Actual	Negotiated (80%)
<b>Average Earnings</b>	Adults	13,703,131	868	15,787.0 E	10,200.0 (8,160.0)
	DW	11,599,217	732	15,845.9 E	13,000.0 (10,400.0)
	NEG	0	0		
10/01/2008 - 09/30/2009		N	D	Actual	Negotiated (80%)
<b>Placement in Employment or Education</b>	Youth (14-21)	62	128	48.4 N	70.0 (56.0)
<b>Attainment of a Degree or Certificate</b>	Youth (14-21)	83	122	68.0 E	67.0 (53.6)
07/01/2009 - 06/30/2010		N	D	Actual	Negotiated (80%)
<b>Literacy and Numeracy Gains</b>	Youth (14-21)	9	36	25.0 M	30.0 (24.0)

Not Met	Met	Exceeded
3	3	3

State of Oregon - Department of Community Colleges and Workforce Development

**Table O - Local Performance (Common Exit)**

Program Year 2009 - 4th Qtr (Year-to-Date)

**Local Area Name: 24 - The Oregon Consortium/Workforce Alliance**

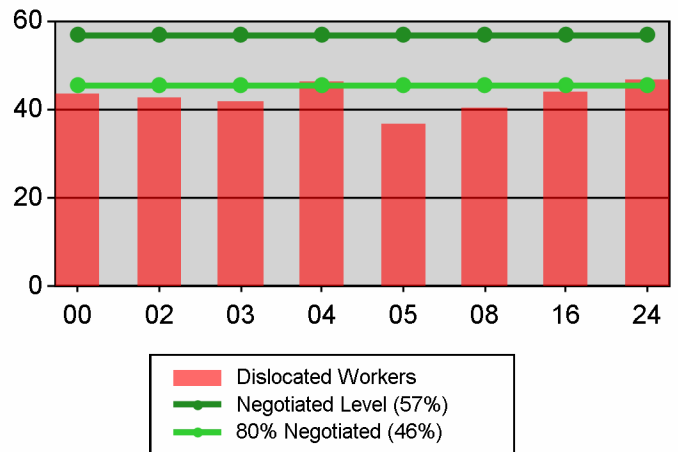
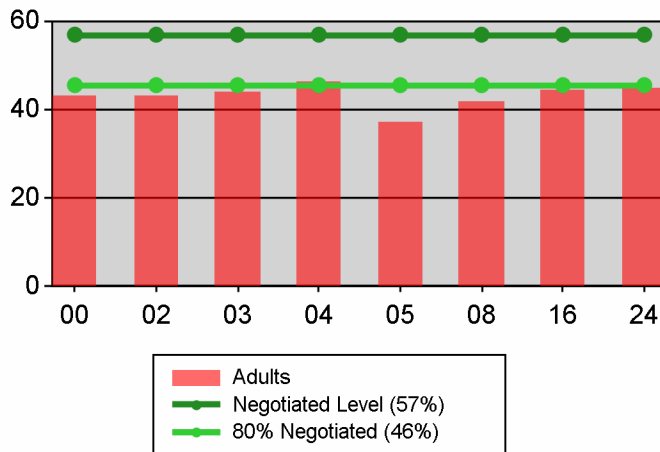
07/01/2009 - 06/30/2010		Served	Exited		
<b>Total Participants</b>	Adults	55,338	45,163		
	DW	32,625	21,890		
	Youth (14-21)	962	424		
10/01/2008 - 09/30/2009		N	D	Actual	Negotiated (80%)
<b>Entered Employment Rate</b>	Adults	9,630	21,489	44.8 <i>N</i>	57.0 (45.6)
	DW	6,351	13,495	47.1 <i>M</i>	57.0 (45.6)
	NEG	152	225	67.6	
04/01/2008 - 03/31/2009		N	D	Actual	Negotiated (80%)
<b>Employment Retention Rate</b>	Adults	5,011	6,683	75.0 <i>M</i>	81.0 (64.8)
	DW	2,544	3,525	72.2 <i>M</i>	81.0 (64.8)
	NEG	64	91	70.3	
04/01/2008 - 03/31/2009		N	D	Actual	Negotiated (80%)
<b>Average Earnings</b>	Adults	59,796,497	5,009	11,937.8 <i>E</i>	10,200.0 (8,160.0)
	DW	31,723,142	2,541	12,484.5 <i>M</i>	13,000.0 (10,400.0)
	NEG	785,605	64	12,275.1	
10/01/2008 - 09/30/2009		N	D	Actual	Negotiated (80%)
<b>Placement in Employment or Education</b>	Youth (14-21)	191	324	59.0 <i>M</i>	70.0 (56.0)
<b>Attainment of a Degree or Certificate</b>	Youth (14-21)	236	334	70.7 <i>E</i>	67.0 (53.6)
07/01/2009 - 06/30/2010		N	D	Actual	Negotiated (80%)
<b>Literacy and Numeracy Gains</b>	Youth (14-21)	34	135	25.2 <i>M</i>	30.0 (24.0)

<i>Not Met</i>	<i>Met</i>	<i>Exceeded</i>
1	6	2

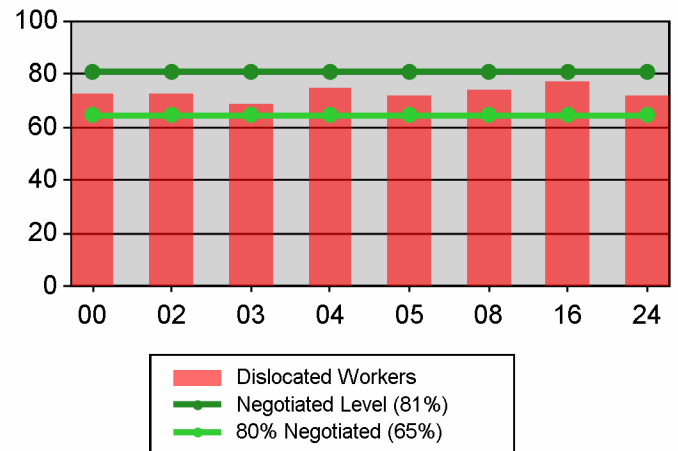
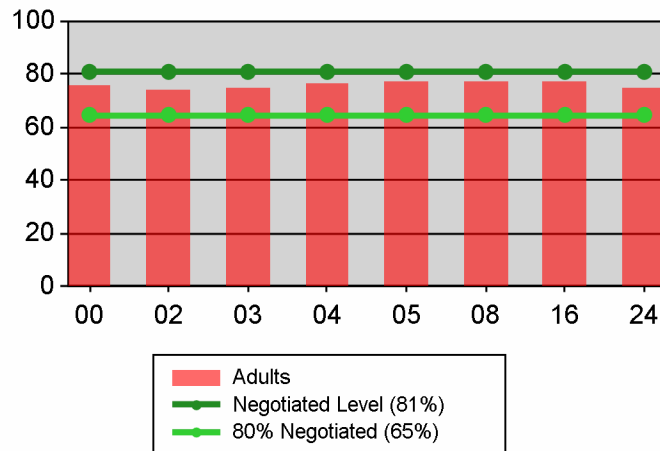
**Table O - Local Performance (Common Exit)**

Program Year 2009 - 4th Qtr (Year-to-Date)

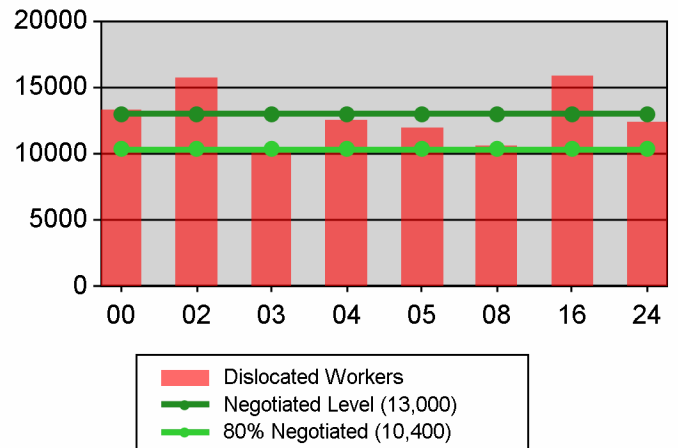
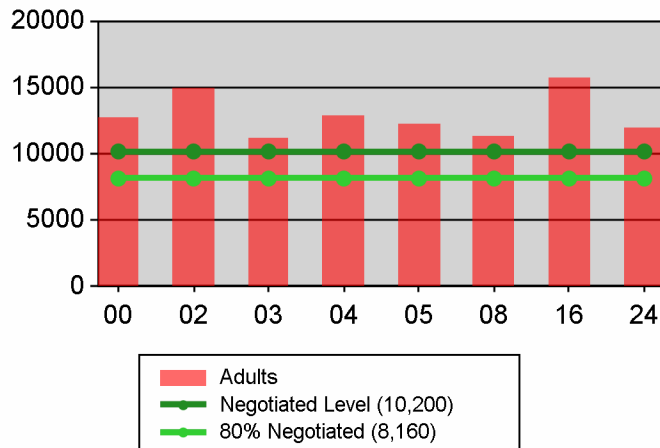
### Entered Employment Rate



### Retention Rate



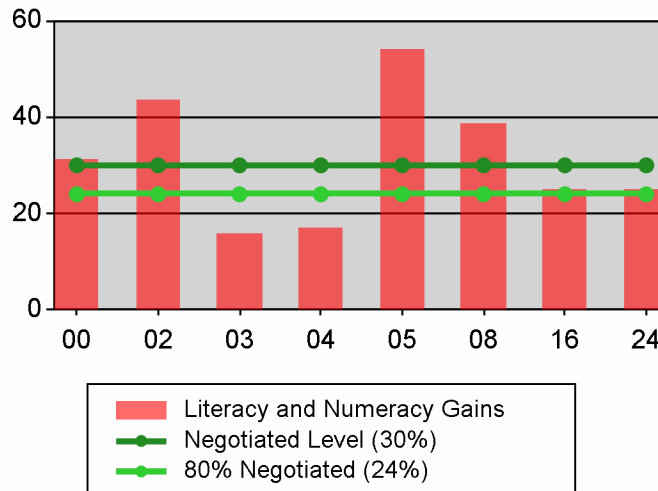
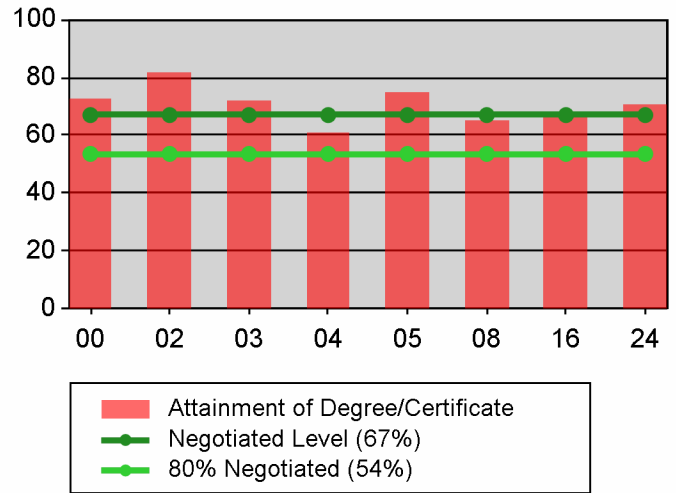
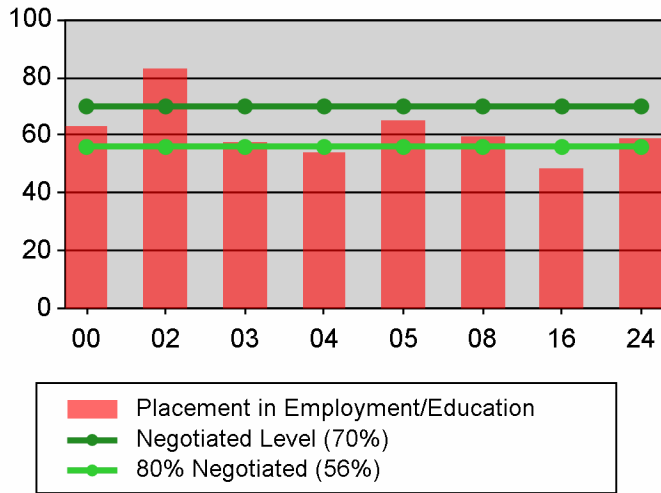
### Average Earnings



**Table O - Local Performance (Common Exit)**

Program Year 2009 - 4th Qtr (Year-to-Date)

**Youth**



State of Oregon - Department of Community Colleges and Workforce Development

**Table O - Local Performance (Common Exit)**

Program Year 2009 - 4th Qtr (Year-to-Date)

**Local Area Name: 24 - The Oregon Consortium/Workforce Alliance**

07/01/2009 - 06/30/2010		Served	Exited		
<b>Total Participants</b>	Adults	55,338	45,163		
	DW	32,625	21,890		
	Youth (14-21)	962	424		
10/01/2008 - 09/30/2009		N	D	Actual	Negotiated (80%)
<b>Entered Employment Rate</b>	Adults	9,630	21,489	44.8 <i>N</i>	57.0 (45.6)
	DW	6,351	13,495	47.1 <i>M</i>	57.0 (45.6)
	NEG	152	225	67.6	
04/01/2008 - 03/31/2009		N	D	Actual	Negotiated (80%)
<b>Employment Retention Rate</b>	Adults	5,011	6,683	75.0 <i>M</i>	81.0 (64.8)
	DW	2,544	3,525	72.2 <i>M</i>	81.0 (64.8)
	NEG	64	91	70.3	
04/01/2008 - 03/31/2009		N	D	Actual	Negotiated (80%)
<b>Average Earnings</b>	Adults	59,796,497	5,009	11,937.8 <i>E</i>	10,200.0 (8,160.0)
	DW	31,723,142	2,541	12,484.5 <i>M</i>	13,000.0 (10,400.0)
	NEG	785,605	64	12,275.1	
10/01/2008 - 09/30/2009		N	D	Actual	Negotiated (80%)
<b>Placement in Employment or Education</b>	Youth (14-21)	191	324	59.0 <i>M</i>	70.0 (56.0)
<b>Attainment of a Degree or Certificate</b>	Youth (14-21)	236	334	70.7 <i>E</i>	67.0 (53.6)
07/01/2009 - 06/30/2010		N	D	Actual	Negotiated (80%)
<b>Literacy and Numeracy Gains</b>	Youth (14-21)	34	135	25.2 <i>M</i>	30.0 (24.0)

<i>Not Met</i>	<i>Met</i>	<i>Exceeded</i>
1	6	2

State of Oregon - Department of Community Colleges and Workforce Development

**Table O - Local Performance (Common Exit)**

Program Year 2009 - 4th Qtr (Year-to-Date)

**Local Area Name: 240100 - Management Training Corp**

07/01/2009 - 06/30/2010		Served	Exited		
<b>Total Participants</b>	Adults	6,843	5,228		
	DW	4,256	2,680		
	Youth (14-21)	131	49		
10/01/2008 - 09/30/2009		N	D	Actual	Negotiated (80%)
<b>Entered Employment Rate</b>	Adults	859	2,051	41.9 <i>N</i>	57.0 (45.6)
	DW	656	1,291	50.8 <i>M</i>	57.0 (45.6)
	NEG	44	66	66.7	
04/01/2008 - 03/31/2009		N	D	Actual	Negotiated (80%)
<b>Employment Retention Rate</b>	Adults	439	586	74.9 <i>M</i>	81.0 (64.8)
	DW	218	326	66.9 <i>M</i>	81.0 (64.8)
	NEG	26	44	59.1	
04/01/2008 - 03/31/2009		N	D	Actual	Negotiated (80%)
<b>Average Earnings</b>	Adults	4,802,955	439	10,940.7 <i>E</i>	10,200.0 (8,160.0)
	DW	2,572,742	218	11,801.6 <i>M</i>	13,000.0 (10,400.0)
	NEG	357,132	26	13,735.8	
10/01/2008 - 09/30/2009		N	D	Actual	Negotiated (80%)
<b>Placement in Employment or Education</b>	Youth (14-21)	30	53	56.6 <i>M</i>	70.0 (56.0)
<b>Attainment of a Degree or Certificate</b>	Youth (14-21)	31	48	64.6 <i>M</i>	67.0 (53.6)
07/01/2009 - 06/30/2010		N	D	Actual	Negotiated (80%)
<b>Literacy and Numeracy Gains</b>	Youth (14-21)	6	37	16.2 <i>N</i>	30.0 (24.0)

<i>Not Met</i>	<i>Met</i>	<i>Exceeded</i>
2	6	1

State of Oregon - Department of Community Colleges and Workforce Development

**Table O - Local Performance (Common Exit)**

Program Year 2009 - 4th Qtr (Year-to-Date)

**Local Area Name: 240600 - Umpqua Training & Employment**

07/01/2009 - 06/30/2010		Served	Exited		
<b>Total Participants</b>	Adults	6,296	5,221		
	DW	3,800	2,691		
	Youth (14-21)	133	57		
10/01/2008 - 09/30/2009		N	D	Actual	Negotiated (80%)
<b>Entered Employment Rate</b>	Adults	957	2,549	37.5 N	57.0 (45.6)
	DW	853	1,957	43.6 N	57.0 (45.6)
	NEG	*	*	25.0	
04/01/2008 - 03/31/2009		N	D	Actual	Negotiated (80%)
<b>Employment Retention Rate</b>	Adults	557	739	75.4 M	81.0 (64.8)
	DW	349	465	75.1 M	81.0 (64.8)
	NEG	0	0		
04/01/2008 - 03/31/2009		N	D	Actual	Negotiated (80%)
<b>Average Earnings</b>	Adults	6,474,603	556	11,645.0 E	10,200.0 (8,160.0)
	DW	4,157,886	349	11,913.7 M	13,000.0 (10,400.0)
	NEG	0	0		
10/01/2008 - 09/30/2009		N	D	Actual	Negotiated (80%)
<b>Placement in Employment or Education</b>	Youth (14-21)	27	44	61.4 M	70.0 (56.0)
<b>Attainment of a Degree or Certificate</b>	Youth (14-21)	40	55	72.7 E	67.0 (53.6)
07/01/2009 - 06/30/2010		N	D	Actual	Negotiated (80%)
<b>Literacy and Numeracy Gains</b>	Youth (14-21)	*	30	16.7 N	30.0 (24.0)

Not Met	Met	Exceeded
3	4	2

State of Oregon - Department of Community Colleges and Workforce Development

**Table O - Local Performance (Common Exit)**

Program Year 2009 - 4th Qtr (Year-to-Date)

**Local Area Name: 240700 - South Coast Business Employment Corp.**

07/01/2009 - 06/30/2010		Served	Exited		
<b>Total Participants</b>	Adults	5,252	4,029		
	DW	3,000	1,845		
	Youth (14-21)	98	52		
10/01/2008 - 09/30/2009		N	D	Actual	Negotiated (80%)
<b>Entered Employment Rate</b>	Adults	836	1,946	43.0 N	57.0 (45.6)
	DW	525	1,097	47.9 M	57.0 (45.6)
	NEG	0	0		
04/01/2008 - 03/31/2009		N	D	Actual	Negotiated (80%)
<b>Employment Retention Rate</b>	Adults	420	561	74.9 M	81.0 (64.8)
	DW	178	260	68.5 M	81.0 (64.8)
	NEG	0	0		
04/01/2008 - 03/31/2009		N	D	Actual	Negotiated (80%)
<b>Average Earnings</b>	Adults	4,692,491	420	11,172.6 E	10,200.0 (8,160.0)
	DW	1,679,499	178	9,435.4 N	13,000.0 (10,400.0)
	NEG	0	0		
10/01/2008 - 09/30/2009		N	D	Actual	Negotiated (80%)
<b>Placement in Employment or Education</b>	Youth (14-21)	24	30	80.0 E	70.0 (56.0)
<b>Attainment of a Degree or Certificate</b>	Youth (14-21)	27	38	71.1 E	67.0 (53.6)
07/01/2009 - 06/30/2010		N	D	Actual	Negotiated (80%)
<b>Literacy and Numeracy Gains</b>	Youth (14-21)	*	8	12.5 N	30.0 (24.0)

Not Met	Met	Exceeded
3	3	3



State of Oregon - Department of Community Colleges and Workforce Development

**Table O - Local Performance (Common Exit)**

Program Year 2009 - 4th Qtr (Year-to-Date)

**Local Area Name: 240900 - Mid-Columbia Council Of Governments**

07/01/2009 - 06/30/2010		Served	Exited		
<b>Total Participants</b>	Adults	3,000	2,373		
	DW	1,766	1,077		
	Youth (14-21)	57	39		
10/01/2008 - 09/30/2009		N	D	Actual	Negotiated (80%)
<b>Entered Employment Rate</b>	Adults	579	1,156	50.1 <i>M</i>	57.0 (45.6)
	DW	326	638	51.1 <i>M</i>	57.0 (45.6)
	NEG	0	0		
04/01/2008 - 03/31/2009		N	D	Actual	Negotiated (80%)
<b>Employment Retention Rate</b>	Adults	253	342	74.0 <i>M</i>	81.0 (64.8)
	DW	121	174	69.5 <i>M</i>	81.0 (64.8)
	NEG	0	0		
04/01/2008 - 03/31/2009		N	D	Actual	Negotiated (80%)
<b>Average Earnings</b>	Adults	2,901,969	253	11,470.2 <i>E</i>	10,200.0 (8,160.0)
	DW	1,544,896	121	12,767.7 <i>M</i>	13,000.0 (10,400.0)
	NEG	0	0		
10/01/2008 - 09/30/2009		N	D	Actual	Negotiated (80%)
<b>Placement in Employment or Education</b>	Youth (14-21)	21	39	53.8 <i>N</i>	70.0 (56.0)
<b>Attainment of a Degree or Certificate</b>	Youth (14-21)	16	28	57.1 <i>M</i>	67.0 (53.6)
07/01/2009 - 06/30/2010		N	D	Actual	Negotiated (80%)
<b>Literacy and Numeracy Gains</b>	Youth (14-21)	0	7	0.0 <i>N</i>	30.0 (24.0)

<i>Not Met</i>	<i>Met</i>	<i>Exceeded</i>
2	6	1

State of Oregon - Department of Community Colleges and Workforce Development

**Table O - Local Performance (Common Exit)**

Program Year 2009 - 4th Qtr (Year-to-Date)

**Local Area Name: 241000 - Central Oregon Intergovernment Council**

07/01/2009 - 06/30/2010		Served	Exited		
<b>Total Participants</b>	Adults	14,808	12,279		
	DW	8,978	6,253		
	Youth (14-21)	166	74		
10/01/2008 - 09/30/2009		N	D	Actual	Negotiated (80%)
<b>Entered Employment Rate</b>	Adults	2,682	6,343	42.3 N	57.0 (45.6)
	DW	1,838	4,303	42.7 N	57.0 (45.6)
	NEG	40	69	58.0	
04/01/2008 - 03/31/2009		N	D	Actual	Negotiated (80%)
<b>Employment Retention Rate</b>	Adults	1,495	1,924	77.7 M	81.0 (64.8)
	DW	824	1,110	74.2 M	81.0 (64.8)
	NEG	38	47	80.9	
04/01/2008 - 03/31/2009		N	D	Actual	Negotiated (80%)
<b>Average Earnings</b>	Adults	19,019,508	1,494	12,730.6 E	10,200.0 (8,160.0)
	DW	10,991,005	824	13,338.6 E	13,000.0 (10,400.0)
	NEG	428,473	38	11,275.6	
10/01/2008 - 09/30/2009		N	D	Actual	Negotiated (80%)
<b>Placement in Employment or Education</b>	Youth (14-21)	23	44	52.3 N	70.0 (56.0)
<b>Attainment of a Degree or Certificate</b>	Youth (14-21)	37	46	80.4 E	67.0 (53.6)
07/01/2009 - 06/30/2010		N	D	Actual	Negotiated (80%)
<b>Literacy and Numeracy Gains</b>	Youth (14-21)	*	*	25.0 M	30.0 (24.0)

Not Met	Met	Exceeded
3	3	3

State of Oregon - Department of Community Colleges and Workforce Development

**Table O - Local Performance (Common Exit)**

Program Year 2009 - 4th Qtr (Year-to-Date)

**Local Area Name: 241100 - Central OR Intergovt Council - Klamath & Lake**

07/01/2009 - 06/30/2010		Served	Exited		
<b>Total Participants</b>	Adults	4,597	3,690		
	DW	2,745	1,820		
	Youth (14-21)	133	49		
10/01/2008 - 09/30/2009		N	D	Actual	Negotiated (80%)
<b>Entered Employment Rate</b>	Adults	685	1,610	42.5 N	57.0 (45.6)
	DW	331	852	38.8 N	57.0 (45.6)
	NEG	0	0		
04/01/2008 - 03/31/2009		N	D	Actual	Negotiated (80%)
<b>Employment Retention Rate</b>	Adults	248	387	64.1 N	81.0 (64.8)
	DW	102	159	64.2 N	81.0 (64.8)
	NEG	0	0		
04/01/2008 - 03/31/2009		N	D	Actual	Negotiated (80%)
<b>Average Earnings</b>	Adults	2,462,756	248	9,930.5 M	10,200.0 (8,160.0)
	DW	1,113,606	101	11,025.8 M	13,000.0 (10,400.0)
	NEG	0	0		
10/01/2008 - 09/30/2009		N	D	Actual	Negotiated (80%)
<b>Placement in Employment or Education</b>	Youth (14-21)	22	38	57.9 M	70.0 (56.0)
<b>Attainment of a Degree or Certificate</b>	Youth (14-21)	23	35	65.7 M	67.0 (53.6)
07/01/2009 - 06/30/2010		N	D	Actual	Negotiated (80%)
<b>Literacy and Numeracy Gains</b>	Youth (14-21)	6	14	42.9 E	30.0 (24.0)

Not Met	Met	Exceeded
4	4	1

State of Oregon - Department of Community Colleges and Workforce Development

**Table O - Local Performance (Common Exit)**

Program Year 2009 - 4th Qtr (Year-to-Date)

**Local Area Name: 241200 - Community Action Programs of East Central Oregon**

07/01/2009 - 06/30/2010		Served	Exited		
<b>Total Participants</b>	Adults	6,677	5,574		
	DW	3,529	2,297		
	Youth (14-21)	137	45		
10/01/2008 - 09/30/2009		N	D	Actual	Negotiated (80%)
<b>Entered Employment Rate</b>	Adults	1,456	2,642	55.1 <i>M</i>	57.0 (45.6)
	DW	741	1,324	56.0 <i>M</i>	57.0 (45.6)
	NEG	17	24	70.8	
04/01/2008 - 03/31/2009		N	D	Actual	Negotiated (80%)
<b>Employment Retention Rate</b>	Adults	693	919	75.4 <i>M</i>	81.0 (64.8)
	DW	264	373	70.8 <i>M</i>	81.0 (64.8)
	NEG	0	0		
04/01/2008 - 03/31/2009		N	D	Actual	Negotiated (80%)
<b>Average Earnings</b>	Adults	8,543,787	693	12,328.7 <i>E</i>	10,200.0 (8,160.0)
	DW	2,858,846	264	10,829.0 <i>M</i>	13,000.0 (10,400.0)
	NEG	0	0		
10/01/2008 - 09/30/2009		N	D	Actual	Negotiated (80%)
<b>Placement in Employment or Education</b>	Youth (14-21)	24	40	60.0 <i>M</i>	70.0 (56.0)
<b>Attainment of a Degree or Certificate</b>	Youth (14-21)	35	46	76.1 <i>E</i>	67.0 (53.6)
07/01/2009 - 06/30/2010		N	D	Actual	Negotiated (80%)
<b>Literacy and Numeracy Gains</b>	Youth (14-21)	*	11	36.4 <i>E</i>	30.0 (24.0)

<i>Not Met</i>	<i>Met</i>	<i>Exceeded</i>
0	6	3

State of Oregon - Department of Community Colleges and Workforce Development

**Table O - Local Performance (Common Exit)**

Program Year 2009 - 4th Qtr (Year-to-Date)

**Local Area Name: 241300 - Training & Employment Consortium - R13**

07/01/2009 - 06/30/2010		Served	Exited		
<b>Total Participants</b>	Adults	4,048	3,433		
	DW	2,408	1,662		
	Youth (14-21)	45	20		
10/01/2008 - 09/30/2009		N	D	Actual	Negotiated (80%)
<b>Entered Employment Rate</b>	Adults	847	1,580	53.6 <i>M</i>	57.0 (45.6)
	DW	532	946	56.2 <i>M</i>	57.0 (45.6)
	NEG	50	62	80.6	
04/01/2008 - 03/31/2009		N	D	Actual	Negotiated (80%)
<b>Employment Retention Rate</b>	Adults	540	680	79.4 <i>M</i>	81.0 (64.8)
	DW	237	303	78.2 <i>M</i>	81.0 (64.8)
	NEG	0	0		
04/01/2008 - 03/31/2009		N	D	Actual	Negotiated (80%)
<b>Average Earnings</b>	Adults	6,730,475	540	12,463.8 <i>E</i>	10,200.0 (8,160.0)
	DW	3,303,372	237	13,938.3 <i>E</i>	13,000.0 (10,400.0)
	NEG	0	0		
10/01/2008 - 09/30/2009		N	D	Actual	Negotiated (80%)
<b>Placement in Employment or Education</b>	Youth (14-21)	9	12	75.0 <i>E</i>	70.0 (56.0)
<b>Attainment of a Degree or Certificate</b>	Youth (14-21)	11	13	84.6 <i>E</i>	67.0 (53.6)
07/01/2009 - 06/30/2010		N	D	Actual	Negotiated (80%)
<b>Literacy and Numeracy Gains</b>	Youth (14-21)	8	9	88.9 <i>E</i>	30.0 (24.0)

<i>Not Met</i>	<i>Met</i>	<i>Exceeded</i>
0	4	5

State of Oregon - Department of Community Colleges and Workforce Development

**Table O - Local Performance (Common Exit)**

Program Year 2009 - 4th Qtr (Year-to-Date)

**Local Area Name: 241400 - Training & Employment Consortium - R14**

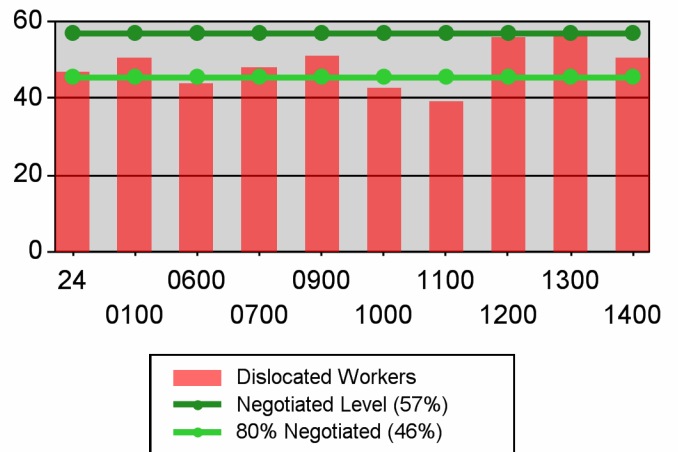
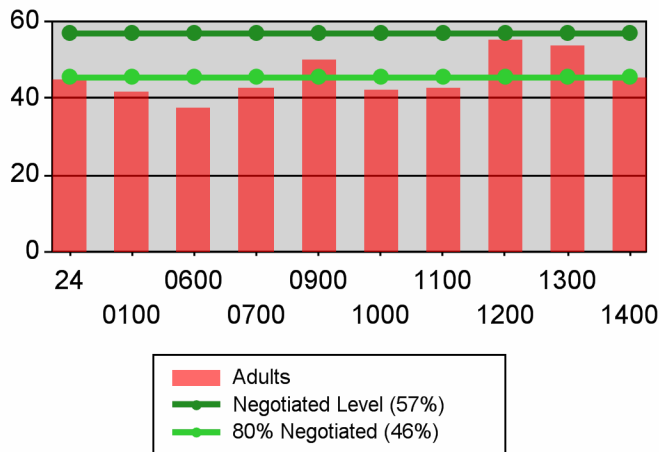
07/01/2009 - 06/30/2010		Served	Exited		
<b>Total Participants</b>	Adults	3,817	3,336		
	DW	2,143	1,565		
	Youth (14-21)	62	39		
10/01/2008 - 09/30/2009		N	D	Actual	Negotiated (80%)
<b>Entered Employment Rate</b>	Adults	729	1,612	45.2 <i>N</i>	57.0 (45.6)
	DW	549	1,087	50.5 <i>M</i>	57.0 (45.6)
	NEG	0	0		
04/01/2008 - 03/31/2009		N	D	Actual	Negotiated (80%)
<b>Employment Retention Rate</b>	Adults	366	545	67.2 <i>M</i>	81.0 (64.8)
	DW	251	355	70.7 <i>M</i>	81.0 (64.8)
	NEG	0	0		
04/01/2008 - 03/31/2009		N	D	Actual	Negotiated (80%)
<b>Average Earnings</b>	Adults	4,167,952	366	11,387.8 <i>E</i>	10,200.0 (8,160.0)
	DW	3,501,291	249	14,061.4 <i>E</i>	13,000.0 (10,400.0)
	NEG	0	0		
10/01/2008 - 09/30/2009		N	D	Actual	Negotiated (80%)
<b>Placement in Employment or Education</b>	Youth (14-21)	11	24	45.8 <i>N</i>	70.0 (56.0)
<b>Attainment of a Degree or Certificate</b>	Youth (14-21)	16	25	64.0 <i>M</i>	67.0 (53.6)
07/01/2009 - 06/30/2010		N	D	Actual	Negotiated (80%)
<b>Literacy and Numeracy Gains</b>	Youth (14-21)	*	15	20.0 <i>N</i>	30.0 (24.0)

<i>Not Met</i>	<i>Met</i>	<i>Exceeded</i>
3	4	2

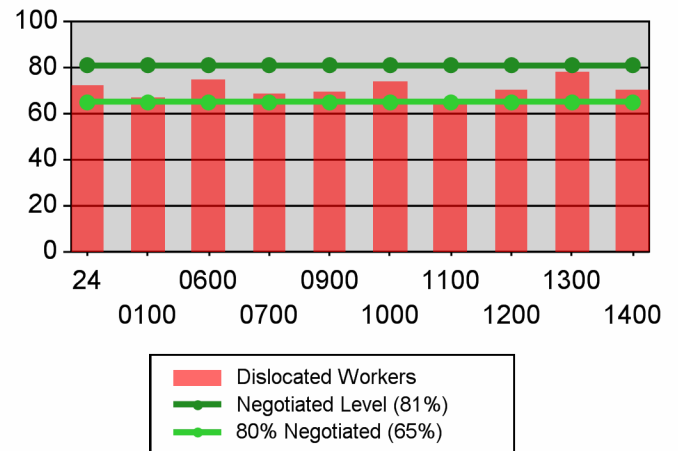
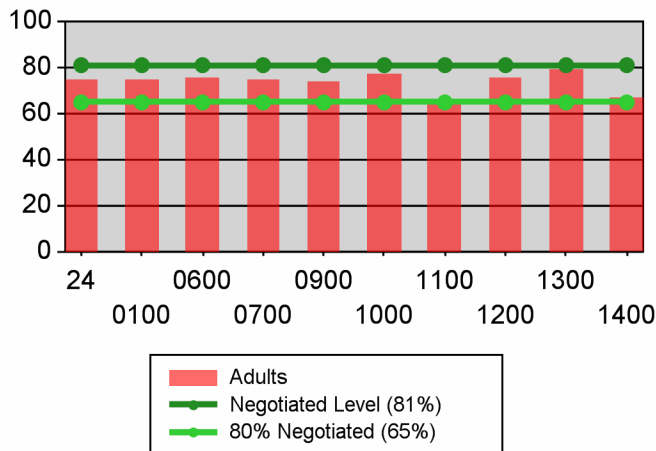
**Table O - Local Performance (Common Exit)**

Program Year 2009 - 4th Qtr (Year-to-Date)

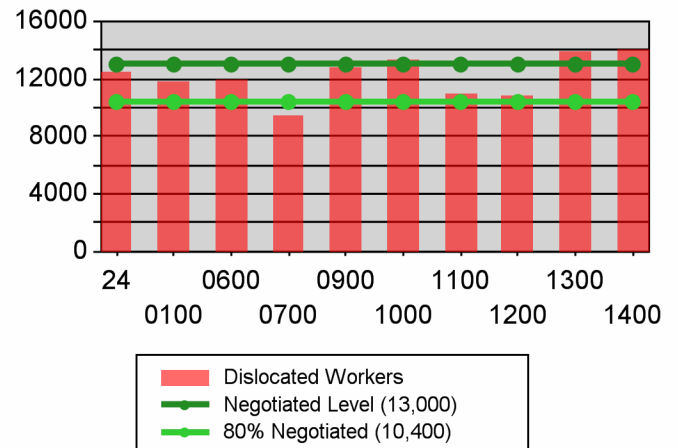
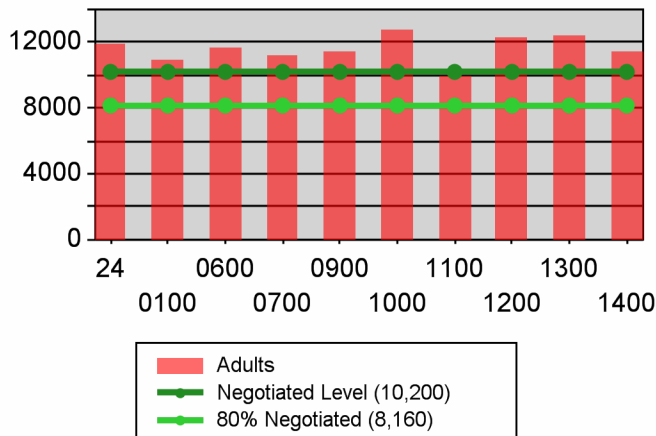
### Entered Employment Rate



### Retention Rate



### Average Earnings



**Table O - Local Performance (Common Exit)**

Program Year 2009 - 4th Qtr (Year-to-Date)

**Youth**

