

WIA Quarterly Report (ETA Form 9090)

**Statewide
PY 2009 Qtr-1**

Cumulative Time Period	Total Participants	Current Quarter (Most Recent)		Cumulative 4-Quarter Reporting Period	
		Value	Numerator Denominator	Value	Numerator Denominator
10/1/2008 - 9/30/2009	Total Adult Customers	103,641		227,215	
	Total Adult self-service only	*		*	
	WIA Adult	63,686		136,698	
	WIA Dislocated Worker	37,712		88,089	
	Natl Emergency Grant	2,243		2,428	
	Received Training Services	2,529		5,267	
	Received Training Services - Adults	1,277		2,527	
	Received Training Services - Dislocated Workers	1,252		2,740	
	Total Youth (14-21)	2,434		3,329	
	Younger Youth (14-18)	1,782		2,465	
	Older Youth (19-21)	652		864	
	Out-of-School Youth	1,178		1,652	
	In-School Youth	1,256		1,677	

Cumulative Time Period	Total Exiters	Current Quarter (Most Recent)		Cumulative 4-Quarter Reporting Period	
		Value	Numerator Denominator	Value	Numerator Denominator
7/1/2008 - 6/30/2009	Total Adult Customers	60,524		127,927	
	Total Adult self-service only	*		*	
	WIA Adult	35,403		75,976	
	WIA Dislocated Worker	25,036		51,698	
	Natl Emergency Grant	85		253	
	Received Training Services	0		1,154	
	Received Training Services - Adults	0		571	
	Received Training Services - Dislocated Workers	0		583	
	Total Youth (14-21)	393		1,323	
	Younger Youth (14-18)	315		1,005	
	Older Youth (19-21)	78		318	
	Out-of-School Youth	180		693	
	In-School Youth	213		630	

* Data suppressed for confidentiality purposes

WIA Quarterly Report (ETA Form 9090)

**Statewide
PY 2009 Qtr-1**

Cumulative Time Period	WIA Youth (14-21)	Current Quarter (Most Recent)		Cumulative 4-Qtr Reporting Period		Neg Perf (80%)
		Value	Numerator Denominator	Value	Numerator Denominator	
1/1/2008 - 12/31/2008	Placement in Employment or Education	55.4%	93 168	65.9%	848 1,287	
1/1/2008 - 12/31/2008	Attainment of a Degree or Certificate	69.9%	95 136	71.9%	820 1,141	
10/1/2008 - 9/30/2009	Literacy and Numeracy Gains	28.7%	41 143	28.4%	189 665	

Cumulative Time Period	Entered Employment Rate	Current Quarter (Most Recent)		Cumulative 4-Qtr Reporting Period		Neg Perf (80%)
		Value	Numerator Denominator	Value	Numerator Denominator	
1/1/2008 - 12/31/2008	Adult Program Results	30.5%	1,953 6,404	40.3%	3,777 9,375	
	Dislocated Worker Program Results	28.7%	1,583 5,517	42.0%	3,359 8,004	
	Natl Emergency Grant	65.8%	25 38	68.4%	193 282	

Cumulative Time Period	Retention Rate	Current Quarter (Most Recent)		Cumulative 4-Qtr Reporting Period		Neg Perf (80%)
		Value	Numerator Denominator	Value	Numerator Denominator	
7/1/2007 - 6/30/2008	Adult Program Results	76.5%	448 586	81.1%	1,588 1,957	
	Dislocated Worker Program Results	81.2%	500 616	86.2%	1,755 2,035	
	Natl Emergency Grant	78.4%	58 74	86.3%	240 278	

Cumulative Time Period	Average Earnings	Current Quarter (Most Recent)		Cumulative 4-Qtr Reporting Period		Neg Perf (80%)
		Value	Numerator Denominator	Value	Numerator Denominator	
7/1/2007 - 6/30/2008	Adult Program Results	\$10,570.4	4,672,108 442	\$11,544.7	17,871,141 1,548	
	Dislocated Worker Program Results	\$13,086.5	6,464,714 494	\$14,065.7	24,305,508 1,728	
	Natl Emergency Grant	\$12,357.8	716,752 58	\$14,145.5	3,380,782 239	

Performance was Calculated: 11/13/2009 3:29:15 PM

* Data suppressed for confidentiality purposes

State of Oregon - Department of Community Colleges and Workforce Development

Table O - Local Performance (Common Exit)

Program Year 2009 - 1st Qtr (Year-to-Date)

Local Area Name: 00 - Statewide

07/01/2009 - 09/30/2009		Served	Exited		
Total Participants	Adults	74,884	30,399		
	DW	48,829	20,673		
	Youth (14-21)	2,327	402		
10/01/2008 - 12/31/2008		N	D	Actual	Negotiated (80%)
Entered Employment Rate	Adults	2,289	5,464	41.9 <i>N</i>	57.0 (45.6)
	DW	1,829	4,489	40.7 <i>N</i>	57.0 (45.6)
	NEG	27	42	64.3	
04/01/2008 - 06/30/2008		N	D	Actual	Negotiated (80%)
Employment Retention Rate	Adults	441	565	78.1 <i>M</i>	81.0 (64.8)
	DW	501	606	82.7 <i>E</i>	81.0 (64.8)
	NEG	53	63	84.1	
04/01/2008 - 06/30/2008		N	D	Actual	Negotiated (80%)
Average Earnings	Adults	4,545,854	433	10,498.5 <i>E</i>	10,200.0 (8,160.0)
	DW	6,587,321	497	13,254.2 <i>E</i>	13,000.0 (10,400.0)
	NEG	653,220	53	12,324.9	
10/01/2008 - 12/31/2008		N	D	Actual	Negotiated (80%)
Placement in Employment or Education	Youth (14-21)	106	170	62.4 <i>M</i>	70.0 (56.0)
Attainment of a Degree or Certificate	Youth (14-21)	107	150	71.3 <i>E</i>	67.0 (53.6)
07/01/2009 - 09/30/2009		N	D	Actual	Negotiated (80%)
Literacy and Numeracy Gains	Youth (14-21)	45	139	32.4 <i>E</i>	30.0 (24.0)

<i>Not Met</i>	<i>Met</i>	<i>Exceeded</i>
2	2	5

State of Oregon - Department of Community Colleges and Workforce Development

Table O - Local Performance (Common Exit)

Program Year 2009 - 1st Qtr (Year-to-Date)

Local Area Name: **02 - Worksystems Inc**

07/01/2009 - 09/30/2009		Served	Exited		
Total Participants	Adults	22,862	7,754		
	DW	21,186	6,938		
	Youth (14-21)	507	99		
10/01/2008 - 12/31/2008		N	D	Actual	Negotiated (80%)
Entered Employment Rate	Adults	588	1,504	39.1 <i>N</i>	57.0 (45.6)
	DW	504	1,292	39.0 <i>N</i>	57.0 (45.6)
	NEG	0	0		
04/01/2008 - 06/30/2008		N	D	Actual	Negotiated (80%)
Employment Retention Rate	Adults	173	215	80.5 <i>M</i>	81.0 (64.8)
	DW	146	176	83.0 <i>E</i>	81.0 (64.8)
	NEG	0	0		
04/01/2008 - 06/30/2008		N	D	Actual	Negotiated (80%)
Average Earnings	Adults	1,935,445	169	11,452.3 <i>E</i>	10,200.0 (8,160.0)
	DW	2,156,589	145	14,873.0 <i>E</i>	13,000.0 (10,400.0)
	NEG	0	0		
10/01/2008 - 12/31/2008		N	D	Actual	Negotiated (80%)
Placement in Employment or Education	Youth (14-21)	20	22	90.9 <i>E</i>	70.0 (56.0)
Attainment of a Degree or Certificate	Youth (14-21)	21	25	84.0 <i>E</i>	67.0 (53.6)
07/01/2009 - 09/30/2009		N	D	Actual	Negotiated (80%)
Literacy and Numeracy Gains	Youth (14-21)	17	32	53.1 <i>E</i>	30.0 (24.0)

<i>Not Met</i>	<i>Met</i>	<i>Exceeded</i>
2	1	6

State of Oregon - Department of Community Colleges and Workforce Development

Table O - Local Performance (Common Exit)

Program Year 2009 - 1st Qtr (Year-to-Date)

Local Area Name: **03 - Job Growers Incorporated**

07/01/2009 - 09/30/2009		Served	Exited		
Total Participants	Adults	8,438	4,179		
	DW	2,755	2,084		
	Youth (14-21)	352	46		
10/01/2008 - 12/31/2008		N	D	Actual	Negotiated (80%)
Entered Employment Rate	Adults	269	593	45.4 <i>N</i>	57.0 (45.6)
	DW	124	292	42.5 <i>N</i>	57.0 (45.6)
	NEG	8	10	80.0	
04/01/2008 - 06/30/2008		N	D	Actual	Negotiated (80%)
Employment Retention Rate	Adults	90	116	77.6 <i>M</i>	81.0 (64.8)
	DW	65	88	73.9 <i>M</i>	81.0 (64.8)
	NEG	13	13	100.0	
04/01/2008 - 06/30/2008		N	D	Actual	Negotiated (80%)
Average Earnings	Adults	855,244	86	9,944.7 <i>M</i>	10,200.0 (8,160.0)
	DW	735,370	64	11,490.2 <i>M</i>	13,000.0 (10,400.0)
	NEG	174,087	13	13,391.3	
10/01/2008 - 12/31/2008		N	D	Actual	Negotiated (80%)
Placement in Employment or Education	Youth (14-21)	20	31	64.5 <i>M</i>	70.0 (56.0)
	Attainment of a Degree or Certificate	Youth (14-21)	8	13	61.5 <i>M</i>
07/01/2009 - 09/30/2009		N	D	Actual	Negotiated (80%)
Literacy and Numeracy Gains	Youth (14-21)	6	30	20.0 <i>N</i>	30.0 (24.0)

<i>Not Met</i>	<i>Met</i>	<i>Exceeded</i>
3	6	0

State of Oregon - Department of Community Colleges and Workforce Development

Table O - Local Performance (Common Exit)

Program Year 2009 - 1st Qtr (Year-to-Date)

Local Area Name: **04 - Community Service Consortium**

07/01/2009 - 09/30/2009		Served	Exited		
Total Participants	Adults	8,953	2,757		
	DW	7,734	2,222		
	Youth (14-21)	263	25		
10/01/2008 - 12/31/2008		N	D	Actual	Negotiated (80%)
Entered Employment Rate	Adults	176	383	46.0 <i>M</i>	57.0 (45.6)
	DW	165	359	46.0 <i>M</i>	57.0 (45.6)
	NEG	*	6	66.7	
04/01/2008 - 06/30/2008		N	D	Actual	Negotiated (80%)
Employment Retention Rate	Adults	20	26	76.9 <i>M</i>	81.0 (64.8)
	DW	27	32	84.4 <i>E</i>	81.0 (64.8)
	NEG	16	20	80.0	
04/01/2008 - 06/30/2008		N	D	Actual	Negotiated (80%)
Average Earnings	Adults	146,482	20	7,324.1 <i>N</i>	10,200.0 (8,160.0)
	DW	383,873	27	14,217.5 <i>E</i>	13,000.0 (10,400.0)
	NEG	255,794	16	15,987.1	
10/01/2008 - 12/31/2008		N	D	Actual	Negotiated (80%)
Placement in Employment or Education	Youth (14-21)	6	14	42.9 <i>N</i>	70.0 (56.0)
Attainment of a Degree or Certificate	Youth (14-21)	*	12	41.7 <i>N</i>	67.0 (53.6)
07/01/2009 - 09/30/2009		N	D	Actual	Negotiated (80%)
Literacy and Numeracy Gains	Youth (14-21)	*	8	12.5 <i>N</i>	30.0 (24.0)

<i>Not Met</i>	<i>Met</i>	<i>Exceeded</i>
4	3	2

State of Oregon - Department of Community Colleges and Workforce Development

Table O - Local Performance (Common Exit)

Program Year 2009 - 1st Qtr (Year-to-Date)

Local Area Name: **05 - Lane Workforce Partnership**

07/01/2009 - 09/30/2009		Served	Exited		
Total Participants	Adults	6,399	4,776		
	DW	2,585	2,411		
	Youth (14-21)	202	47		
10/01/2008 - 12/31/2008		N	D	Actual	Negotiated (80%)
Entered Employment Rate	Adults	139	359	38.7 <i>N</i>	57.0 (45.6)
	DW	142	352	40.3 <i>N</i>	57.0 (45.6)
	NEG	0	0		
04/01/2008 - 06/30/2008		N	D	Actual	Negotiated (80%)
Employment Retention Rate	Adults	34	40	85.0 <i>E</i>	81.0 (64.8)
	DW	38	45	84.4 <i>E</i>	81.0 (64.8)
	NEG	0	0		
04/01/2008 - 06/30/2008		N	D	Actual	Negotiated (80%)
Average Earnings	Adults	385,252	34	11,330.9 <i>E</i>	10,200.0 (8,160.0)
	DW	492,794	38	12,968.3 <i>M</i>	13,000.0 (10,400.0)
	NEG	0	0		
10/01/2008 - 12/31/2008		N	D	Actual	Negotiated (80%)
Placement in Employment or Education	Youth (14-21)	12	14	85.7 <i>E</i>	70.0 (56.0)
Attainment of a Degree or Certificate	Youth (14-21)	12	15	80.0 <i>E</i>	67.0 (53.6)
07/01/2009 - 09/30/2009		N	D	Actual	Negotiated (80%)
Literacy and Numeracy Gains	Youth (14-21)	6	9	66.7 <i>E</i>	30.0 (24.0)

<i>Not Met</i>	<i>Met</i>	<i>Exceeded</i>
2	1	6

State of Oregon - Department of Community Colleges and Workforce Development

Table O - Local Performance (Common Exit)

Program Year 2009 - 1st Qtr (Year-to-Date)

Local Area Name: **08 - The Job Council**

07/01/2009 - 09/30/2009		Served	Exited		
Total Participants	Adults	3,723	1,074		
	DW	1,349	786		
	Youth (14-21)	137	11		
10/01/2008 - 12/31/2008		N	D	Actual	Negotiated (80%)
Entered Employment Rate	Adults	204	479	42.6 <i>N</i>	57.0 (45.6)
	DW	178	432	41.2 <i>N</i>	57.0 (45.6)
	NEG	0	0		
04/01/2008 - 06/30/2008		N	D	Actual	Negotiated (80%)
Employment Retention Rate	Adults	24	33	72.7 <i>M</i>	81.0 (64.8)
	DW	47	57	82.5 <i>E</i>	81.0 (64.8)
	NEG	0	0		
04/01/2008 - 06/30/2008		N	D	Actual	Negotiated (80%)
Average Earnings	Adults	144,322	24	6,013.4 <i>N</i>	10,200.0 (8,160.0)
	DW	469,757	47	9,994.8 <i>N</i>	13,000.0 (10,400.0)
	NEG	0	0		
10/01/2008 - 12/31/2008		N	D	Actual	Negotiated (80%)
Placement in Employment or Education	Youth (14-21)	*	11	45.5 <i>N</i>	70.0 (56.0)
Attainment of a Degree or Certificate	Youth (14-21)	6	9	66.7 <i>M</i>	67.0 (53.6)
07/01/2009 - 09/30/2009		N	D	Actual	Negotiated (80%)
Literacy and Numeracy Gains	Youth (14-21)	11	28	39.3 <i>E</i>	30.0 (24.0)

<i>Not Met</i>	<i>Met</i>	<i>Exceeded</i>
5	2	2

State of Oregon - Department of Community Colleges and Workforce Development

Table O - Local Performance (Common Exit)

Program Year 2009 - 1st Qtr (Year-to-Date)

Local Area Name: 16 - Workforce Investment Council of Clackamas County

07/01/2009 - 09/30/2009		Served	Exited		
Total Participants	Adults	6,762	2,138		
	DW	6,316	1,927		
	Youth (14-21)	217	90		
10/01/2008 - 12/31/2008		N	D	Actual	Negotiated (80%)
Entered Employment Rate	Adults	181	441	41.0 <i>N</i>	57.0 (45.6)
	DW	176	422	41.7 <i>N</i>	57.0 (45.6)
	NEG	0	0		
04/01/2008 - 06/30/2008		N	D	Actual	Negotiated (80%)
Employment Retention Rate	Adults	39	48	81.3 <i>E</i>	81.0 (64.8)
	DW	59	68	86.8 <i>E</i>	81.0 (64.8)
	NEG	0	0		
04/01/2008 - 06/30/2008		N	D	Actual	Negotiated (80%)
Average Earnings	Adults	480,912	39	12,331.1 <i>E</i>	10,200.0 (8,160.0)
	DW	783,611	59	13,281.5 <i>E</i>	13,000.0 (10,400.0)
	NEG	0	0		
10/01/2008 - 12/31/2008		N	D	Actual	Negotiated (80%)
Placement in Employment or Education	Youth (14-21)	9	17	52.9 <i>N</i>	70.0 (56.0)
Attainment of a Degree or Certificate	Youth (14-21)	10	15	66.7 <i>M</i>	67.0 (53.6)
07/01/2009 - 09/30/2009		N	D	Actual	Negotiated (80%)
Literacy and Numeracy Gains	Youth (14-21)	0	*	0.0 <i>N</i>	30.0 (24.0)

<i>Not Met</i>	<i>Met</i>	<i>Exceeded</i>
4	1	4

State of Oregon - Department of Community Colleges and Workforce Development

Table O - Local Performance (Common Exit)

Program Year 2009 - 1st Qtr (Year-to-Date)

Local Area Name: 24 - The Oregon Consortium/Workforce Alliance

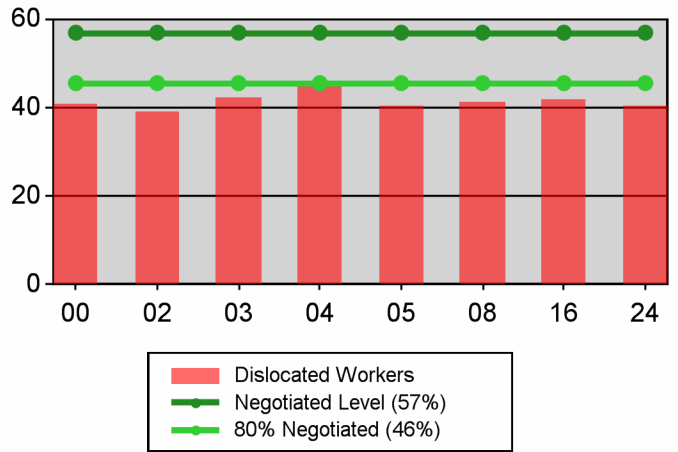
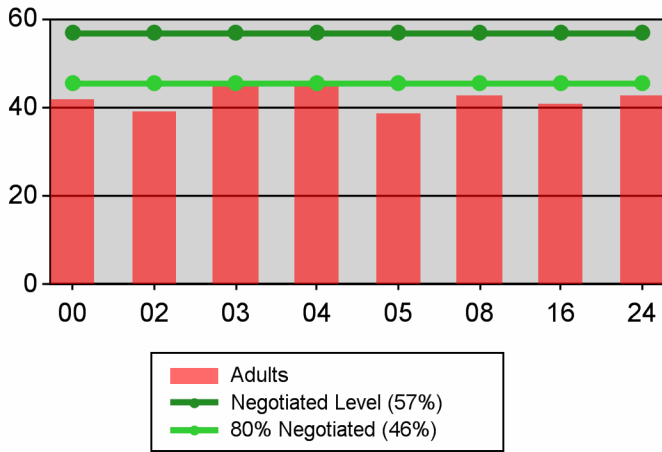
07/01/2009 - 09/30/2009		Served	Exited		
Total Participants	Adults	17,747	7,721		
	DW	6,904	4,305		
	Youth (14-21)	649	84		
10/01/2008 - 12/31/2008		N	D	Actual	Negotiated (80%)
Entered Employment Rate	Adults	732	1,705	42.9 <i>N</i>	57.0 (45.6)
	DW	540	1,340	40.3 <i>N</i>	57.0 (45.6)
	NEG	15	26	57.7	
04/01/2008 - 06/30/2008		N	D	Actual	Negotiated (80%)
Employment Retention Rate	Adults	61	87	70.1 <i>M</i>	81.0 (64.8)
	DW	119	140	85.0 <i>E</i>	81.0 (64.8)
	NEG	24	30	80.0	
04/01/2008 - 06/30/2008		N	D	Actual	Negotiated (80%)
Average Earnings	Adults	598,197	61	9,806.5 <i>M</i>	10,200.0 (8,160.0)
	DW	1,565,327	117	13,378.9 <i>E</i>	13,000.0 (10,400.0)
	NEG	223,339	24	9,305.8	
10/01/2008 - 12/31/2008		N	D	Actual	Negotiated (80%)
Placement in Employment or Education	Youth (14-21)	34	61	55.7 <i>N</i>	70.0 (56.0)
Attainment of a Degree or Certificate	Youth (14-21)	45	61	73.8 <i>E</i>	67.0 (53.6)
07/01/2009 - 09/30/2009		N	D	Actual	Negotiated (80%)
Literacy and Numeracy Gains	Youth (14-21)	*	30	13.3 <i>N</i>	30.0 (24.0)

<i>Not Met</i>	<i>Met</i>	<i>Exceeded</i>
4	2	3

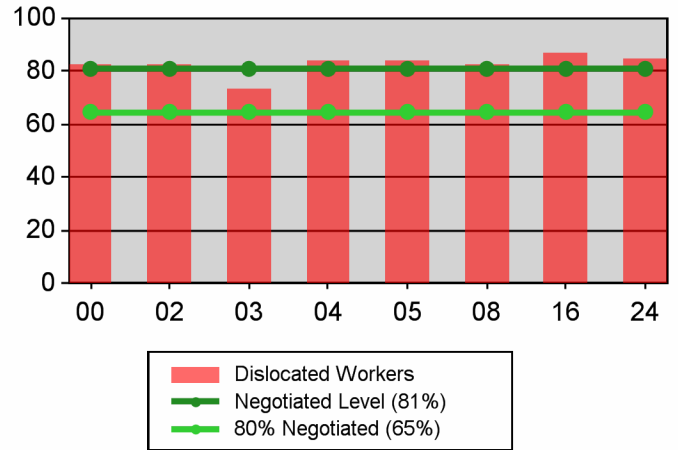
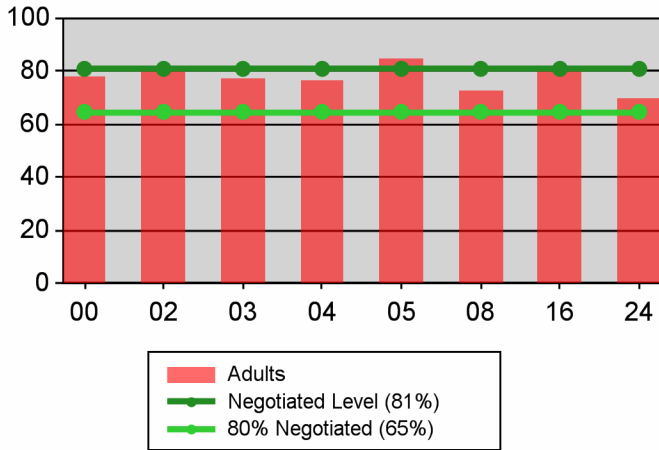
Table O - Local Performance (Common Exit)

Program Year 2009 - 1st Qtr (Year-to-Date)

Entered Employment Rate



Retention Rate



Average Earnings

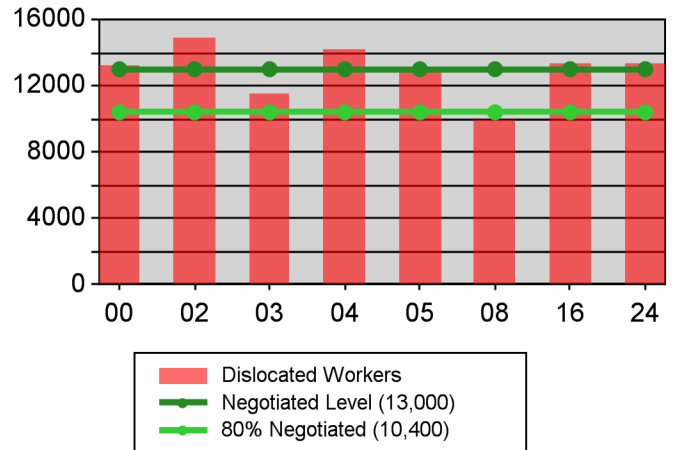
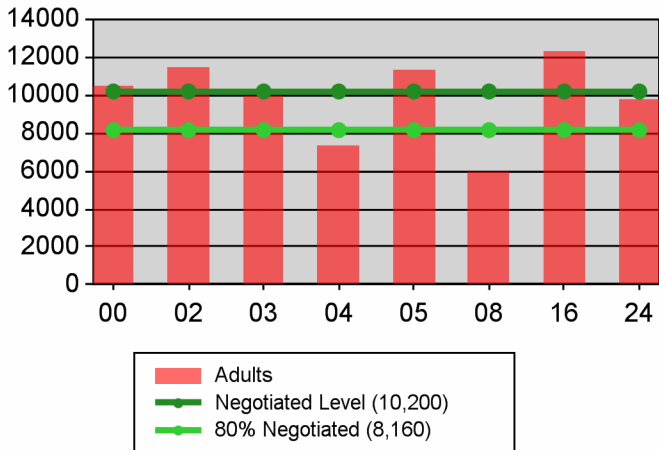
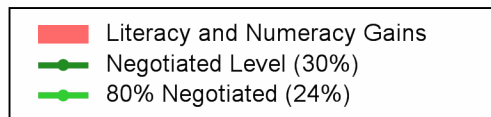
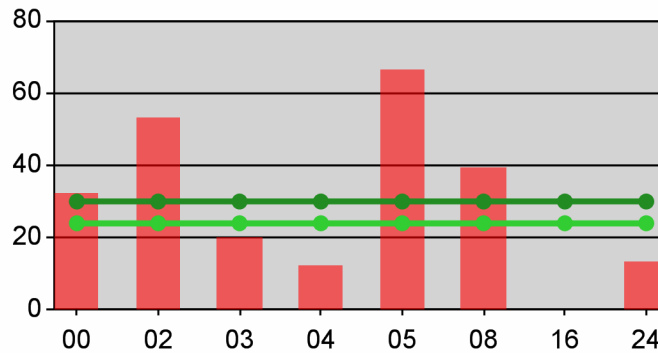
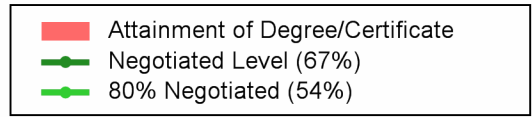
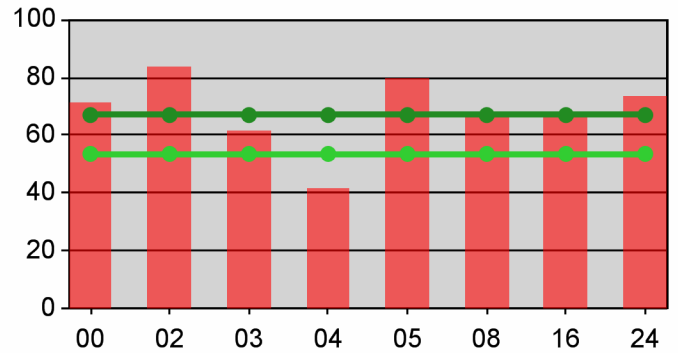
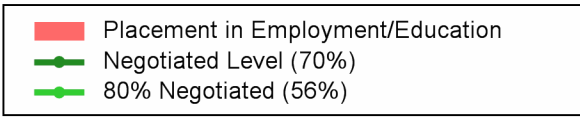
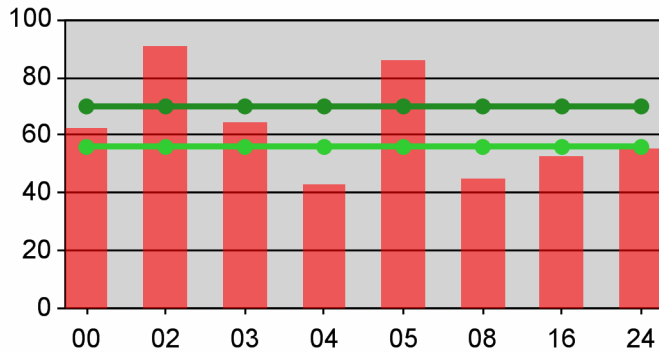


Table O - Local Performance (Common Exit)

Program Year 2009 - 1st Qtr (Year-to-Date)

Youth



State of Oregon - Department of Community Colleges and Workforce Development

Table O - Local Performance (Common Exit)

Program Year 2009 - 1st Qtr (Year-to-Date)

Local Area Name: 24 - The Oregon Consortium/Workforce Alliance

07/01/2009 - 09/30/2009		Served	Exited		
Total Participants	Adults	17,747	7,721		
	DW	6,904	4,305		
	Youth (14-21)	649	84		
10/01/2008 - 12/31/2008		N	D	Actual	Negotiated (80%)
Entered Employment Rate	Adults	732	1,705	42.9 <i>N</i>	57.0 (45.6)
	DW	540	1,340	40.3 <i>N</i>	57.0 (45.6)
	NEG	15	26	57.7	
04/01/2008 - 06/30/2008		N	D	Actual	Negotiated (80%)
Employment Retention Rate	Adults	61	87	70.1 <i>M</i>	81.0 (64.8)
	DW	119	140	85.0 <i>E</i>	81.0 (64.8)
	NEG	24	30	80.0	
04/01/2008 - 06/30/2008		N	D	Actual	Negotiated (80%)
Average Earnings	Adults	598,197	61	9,806.5 <i>M</i>	10,200.0 (8,160.0)
	DW	1,565,327	117	13,378.9 <i>E</i>	13,000.0 (10,400.0)
	NEG	223,339	24	9,305.8	
10/01/2008 - 12/31/2008		N	D	Actual	Negotiated (80%)
Placement in Employment or Education	Youth (14-21)	34	61	55.7 <i>N</i>	70.0 (56.0)
Attainment of a Degree or Certificate	Youth (14-21)	45	61	73.8 <i>E</i>	67.0 (53.6)
07/01/2009 - 09/30/2009		N	D	Actual	Negotiated (80%)
Literacy and Numeracy Gains	Youth (14-21)	*	30	13.3 <i>N</i>	30.0 (24.0)

<i>Not Met</i>	<i>Met</i>	<i>Exceeded</i>
4	2	3

State of Oregon - Department of Community Colleges and Workforce Development

Table O - Local Performance (Common Exit)

Program Year 2009 - 1st Qtr (Year-to-Date)

Local Area Name: 240100 - Management Training Corp

07/01/2009 - 09/30/2009		Served	Exited		
Total Participants	Adults	2,050	714		
	DW	953	431		
	Youth (14-21)	69	15		
10/01/2008 - 12/31/2008		N	D	Actual	Negotiated (80%)
Entered Employment Rate	Adults	66	127	52.0 <i>M</i>	57.0 (45.6)
	DW	54	105	51.4 <i>M</i>	57.0 (45.6)
	NEG	10	17	58.8	
04/01/2008 - 06/30/2008		N	D	Actual	Negotiated (80%)
Employment Retention Rate	Adults	8	13	61.5 <i>N</i>	81.0 (64.8)
	DW	20	23	87.0 <i>E</i>	81.0 (64.8)
	NEG	*	7	57.1	
04/01/2008 - 06/30/2008		N	D	Actual	Negotiated (80%)
Average Earnings	Adults	65,032	8	8,129.0 <i>N</i>	10,200.0 (8,160.0)
	DW	288,655	20	14,432.8 <i>E</i>	13,000.0 (10,400.0)
	NEG	23,120	*	5,780.0	
10/01/2008 - 12/31/2008		N	D	Actual	Negotiated (80%)
Placement in Employment or Education	Youth (14-21)	8	16	50.0 <i>N</i>	70.0 (56.0)
Attainment of a Degree or Certificate	Youth (14-21)	7	12	58.3 <i>M</i>	67.0 (53.6)
07/01/2009 - 09/30/2009		N	D	Actual	Negotiated (80%)
Literacy and Numeracy Gains	Youth (14-21)	0	12	0.0 <i>N</i>	30.0 (24.0)

<i>Not Met</i>	<i>Met</i>	<i>Exceeded</i>
4	3	2

State of Oregon - Department of Community Colleges and Workforce Development

Table O - Local Performance (Common Exit)

Program Year 2009 - 1st Qtr (Year-to-Date)

Local Area Name: 240600 - Umpqua Training & Employment

07/01/2009 - 09/30/2009		Served	Exited		
Total Participants	Adults	2,139	943		
	DW	821	595		
	Youth (14-21)	94	15		
10/01/2008 - 12/31/2008		N	D	Actual	Negotiated (80%)
Entered Employment Rate	Adults	66	198	33.3 <i>N</i>	57.0 (45.6)
	DW	72	197	36.5 <i>N</i>	57.0 (45.6)
	NEG	0	0		
04/01/2008 - 06/30/2008		N	D	Actual	Negotiated (80%)
Employment Retention Rate	Adults	*	*	100.0 <i>E</i>	81.0 (64.8)
	DW	7	7	100.0 <i>E</i>	81.0 (64.8)
	NEG	0	0		
04/01/2008 - 06/30/2008		N	D	Actual	Negotiated (80%)
Average Earnings	Adults	48,646	*	12,161.5 <i>E</i>	10,200.0 (8,160.0)
	DW	124,591	7	17,798.7 <i>E</i>	13,000.0 (10,400.0)
	NEG	0	0		
10/01/2008 - 12/31/2008		N	D	Actual	Negotiated (80%)
Placement in Employment or Education	Youth (14-21)	7	9	77.8 <i>E</i>	70.0 (56.0)
	Attainment of a Degree or Certificate	Youth (14-21)	11	13	84.6 <i>E</i>
07/01/2009 - 09/30/2009		N	D	Actual	Negotiated (80%)
Literacy and Numeracy Gains	Youth (14-21)	*	*	25.0 <i>M</i>	30.0 (24.0)

<i>Not Met</i>	<i>Met</i>	<i>Exceeded</i>
2	1	6

State of Oregon - Department of Community Colleges and Workforce Development

Table O - Local Performance (Common Exit)

Program Year 2009 - 1st Qtr (Year-to-Date)

Local Area Name: 240700 - South Coast Business Employment Corp.

07/01/2009 - 09/30/2009		Served	Exited		
Total Participants	Adults	1,593	693		
	DW	512	399		
	Youth (14-21)	72	6		
10/01/2008 - 12/31/2008		N	D	Actual	Negotiated (80%)
Entered Employment Rate	Adults	66	183	36.1 <i>N</i>	57.0 (45.6)
	DW	52	125	41.6 <i>N</i>	57.0 (45.6)
	NEG	0	0		
04/01/2008 - 06/30/2008		N	D	Actual	Negotiated (80%)
Employment Retention Rate	Adults	7	10	70.0 <i>M</i>	81.0 (64.8)
	DW	8	9	88.9 <i>E</i>	81.0 (64.8)
	NEG	0	0		
04/01/2008 - 06/30/2008		N	D	Actual	Negotiated (80%)
Average Earnings	Adults	77,651	7	11,093.0 <i>E</i>	10,200.0 (8,160.0)
	DW	110,962	8	13,870.3 <i>E</i>	13,000.0 (10,400.0)
	NEG	0	0		
10/01/2008 - 12/31/2008		N	D	Actual	Negotiated (80%)
Placement in Employment or Education	Youth (14-21)	6	9	66.7 <i>M</i>	70.0 (56.0)
Attainment of a Degree or Certificate	Youth (14-21)	8	11	72.7 <i>E</i>	67.0 (53.6)
07/01/2009 - 09/30/2009		N	D	Actual	Negotiated (80%)
Literacy and Numeracy Gains	Youth (14-21)	0	*	0.0 <i>N</i>	30.0 (24.0)

<i>Not Met</i>	<i>Met</i>	<i>Exceeded</i>
3	2	4

State of Oregon - Department of Community Colleges and Workforce Development

Table O - Local Performance (Common Exit)

Program Year 2009 - 1st Qtr (Year-to-Date)

Local Area Name: 240900 - Mid-Columbia Council Of Governments

07/01/2009 - 09/30/2009		Served	Exited		
Total Participants	Adults	1,231	432		
	DW	564	192		
	Youth (14-21)	23	8		
10/01/2008 - 12/31/2008		N	D	Actual	Negotiated (80%)
Entered Employment Rate	Adults	23	54	42.6 <i>N</i>	57.0 (45.6)
	DW	19	40	47.5 <i>M</i>	57.0 (45.6)
	NEG	0	0		
04/01/2008 - 06/30/2008		N	D	Actual	Negotiated (80%)
Employment Retention Rate	Adults	*	*	66.7 <i>M</i>	81.0 (64.8)
	DW	*	*	66.7 <i>M</i>	81.0 (64.8)
	NEG	0	0		
04/01/2008 - 06/30/2008		N	D	Actual	Negotiated (80%)
Average Earnings	Adults	7,237	*	3,618.5 <i>N</i>	10,200.0 (8,160.0)
	DW	28,126	*	14,063.0 <i>E</i>	13,000.0 (10,400.0)
	NEG	0	0		
10/01/2008 - 12/31/2008		N	D	Actual	Negotiated (80%)
Placement in Employment or Education	Youth (14-21)	*	6	16.7 <i>N</i>	70.0 (56.0)
	Attainment of a Degree or Certificate	Youth (14-21)	*	*	75.0 <i>E</i>
07/01/2009 - 09/30/2009		N	D	Actual	Negotiated (80%)
Literacy and Numeracy Gains	Youth (14-21)	0	*	0.0 <i>N</i>	30.0 (24.0)

<i>Not Met</i>	<i>Met</i>	<i>Exceeded</i>
4	3	2

State of Oregon - Department of Community Colleges and Workforce Development

Table O - Local Performance (Common Exit)

Program Year 2009 - 1st Qtr (Year-to-Date)

Local Area Name: 241000 - Central Oregon Intergovernment Council

07/01/2009 - 09/30/2009		Served	Exited		
Total Participants	Adults	4,841	1,950		
	DW	1,843	1,300		
	Youth (14-21)	101	14		
10/01/2008 - 12/31/2008		N	D	Actual	Negotiated (80%)
Entered Employment Rate	Adults	223	524	42.6 <i>N</i>	57.0 (45.6)
	DW	142	379	37.5 <i>N</i>	57.0 (45.6)
	NEG	*	8	62.5	
04/01/2008 - 06/30/2008		N	D	Actual	Negotiated (80%)
Employment Retention Rate	Adults	11	15	73.3 <i>M</i>	81.0 (64.8)
	DW	44	55	80.0 <i>M</i>	81.0 (64.8)
	NEG	18	21	85.7	
04/01/2008 - 06/30/2008		N	D	Actual	Negotiated (80%)
Average Earnings	Adults	143,392	11	13,035.6 <i>E</i>	10,200.0 (8,160.0)
	DW	564,161	44	12,821.8 <i>M</i>	13,000.0 (10,400.0)
	NEG	176,146	18	9,785.9	
10/01/2008 - 12/31/2008		N	D	Actual	Negotiated (80%)
Placement in Employment or Education	Youth (14-21)	6	12	50.0 <i>N</i>	70.0 (56.0)
Attainment of a Degree or Certificate	Youth (14-21)	9	11	81.8 <i>E</i>	67.0 (53.6)
07/01/2009 - 09/30/2009		N	D	Actual	Negotiated (80%)
Literacy and Numeracy Gains	Youth (14-21)	*	*	100.0 <i>E</i>	30.0 (24.0)

<i>Not Met</i>	<i>Met</i>	<i>Exceeded</i>
3	3	3

State of Oregon - Department of Community Colleges and Workforce Development

Table O - Local Performance (Common Exit)

Program Year 2009 - 1st Qtr (Year-to-Date)

Local Area Name: 241100 - Central OR Intergovt Council - Klamath & Lake

07/01/2009 - 09/30/2009		Served	Exited		
Total Participants	Adults	1,457	548		
	DW	531	292		
	Youth (14-21)	65	12		
10/01/2008 - 12/31/2008		N	D	Actual	Negotiated (80%)
Entered Employment Rate	Adults	56	121	46.3 <i>M</i>	57.0 (45.6)
	DW	20	82	24.4 <i>N</i>	57.0 (45.6)
	NEG	0	0		
04/01/2008 - 06/30/2008		N	D	Actual	Negotiated (80%)
Employment Retention Rate	Adults	7	11	63.6 <i>N</i>	81.0 (64.8)
	DW	6	7	85.7 <i>E</i>	81.0 (64.8)
	NEG	0	0		
04/01/2008 - 06/30/2008		N	D	Actual	Negotiated (80%)
Average Earnings	Adults	55,205	7	7,886.4 <i>N</i>	10,200.0 (8,160.0)
	DW	81,014	6	13,502.3 <i>E</i>	13,000.0 (10,400.0)
	NEG	0	0		
10/01/2008 - 12/31/2008		N	D	Actual	Negotiated (80%)
Placement in Employment or Education	Youth (14-21)	*	*	100.0 <i>E</i>	70.0 (56.0)
Attainment of a Degree or Certificate	Youth (14-21)	*	*	100.0 <i>E</i>	67.0 (53.6)
07/01/2009 - 09/30/2009		N	D	Actual	Negotiated (80%)
Literacy and Numeracy Gains	Youth (14-21)	*	*	100.0 <i>E</i>	30.0 (24.0)

<i>Not Met</i>	<i>Met</i>	<i>Exceeded</i>
3	1	5

State of Oregon - Department of Community Colleges and Workforce Development

Table O - Local Performance (Common Exit)

Program Year 2009 - 1st Qtr (Year-to-Date)

Local Area Name: 241200 - Community Action Programs of East Central Oregon

07/01/2009 - 09/30/2009		Served	Exited		
Total Participants	Adults	2,126	1,073		
	DW	648	439		
	Youth (14-21)	126	*		
10/01/2008 - 12/31/2008		N	D	Actual	Negotiated (80%)
Entered Employment Rate	Adults	117	217	53.9 <i>M</i>	57.0 (45.6)
	DW	71	157	45.2 <i>N</i>	57.0 (45.6)
	NEG	0	*	0.0	
04/01/2008 - 06/30/2008		N	D	Actual	Negotiated (80%)
Employment Retention Rate	Adults	10	16	62.5 <i>N</i>	81.0 (64.8)
	DW	12	14	85.7 <i>E</i>	81.0 (64.8)
	NEG	*	*	100.0	
04/01/2008 - 06/30/2008		N	D	Actual	Negotiated (80%)
Average Earnings	Adults	95,435	10	9,543.5 <i>M</i>	10,200.0 (8,160.0)
	DW	185,427	12	15,452.3 <i>E</i>	13,000.0 (10,400.0)
	NEG	24,073	*	12,036.5	
10/01/2008 - 12/31/2008		N	D	Actual	Negotiated (80%)
Placement in Employment or Education	Youth (14-21)	0	0		70.0 (56.0)
Attainment of a Degree or Certificate	Youth (14-21)	0	0		67.0 (53.6)
07/01/2009 - 09/30/2009		N	D	Actual	Negotiated (80%)
Literacy and Numeracy Gains	Youth (14-21)	*	*	100.0 <i>E</i>	30.0 (24.0)

<i>Not Met</i>	<i>Met</i>	<i>Exceeded</i>
2	2	3

State of Oregon - Department of Community Colleges and Workforce Development

Table O - Local Performance (Common Exit)

Program Year 2009 - 1st Qtr (Year-to-Date)

Local Area Name: 241300 - Training & Employment Consortium - R13

07/01/2009 - 09/30/2009		Served	Exited		
Total Participants	Adults	1,236	700		
	DW	619	311		
	Youth (14-21)	42	7		
10/01/2008 - 12/31/2008		N	D	Actual	Negotiated (80%)
Entered Employment Rate	Adults	55	121	45.5 <i>N</i>	57.0 (45.6)
	DW	51	106	48.1 <i>M</i>	57.0 (45.6)
	NEG	0	0		
04/01/2008 - 06/30/2008		N	D	Actual	Negotiated (80%)
Employment Retention Rate	Adults	*	8	62.5 <i>N</i>	81.0 (64.8)
	DW	*	*	66.7 <i>M</i>	81.0 (64.8)
	NEG	0	0		
04/01/2008 - 06/30/2008		N	D	Actual	Negotiated (80%)
Average Earnings	Adults	36,115	*	7,223.0 <i>N</i>	10,200.0 (8,160.0)
	DW	19,147	*	9,573.5 <i>N</i>	13,000.0 (10,400.0)
	NEG	0	0		
10/01/2008 - 12/31/2008		N	D	Actual	Negotiated (80%)
Placement in Employment or Education	Youth (14-21)	*	6	66.7 <i>M</i>	70.0 (56.0)
Attainment of a Degree or Certificate	Youth (14-21)	*	6	66.7 <i>M</i>	67.0 (53.6)
07/01/2009 - 09/30/2009		N	D	Actual	Negotiated (80%)
Literacy and Numeracy Gains	Youth (14-21)	0	0		30.0 (24.0)

<i>Not Met</i>	<i>Met</i>	<i>Exceeded</i>
4	4	0

State of Oregon - Department of Community Colleges and Workforce Development

Table O - Local Performance (Common Exit)

Program Year 2009 - 1st Qtr (Year-to-Date)

Local Area Name: 241400 - Training & Employment Consortium - R14

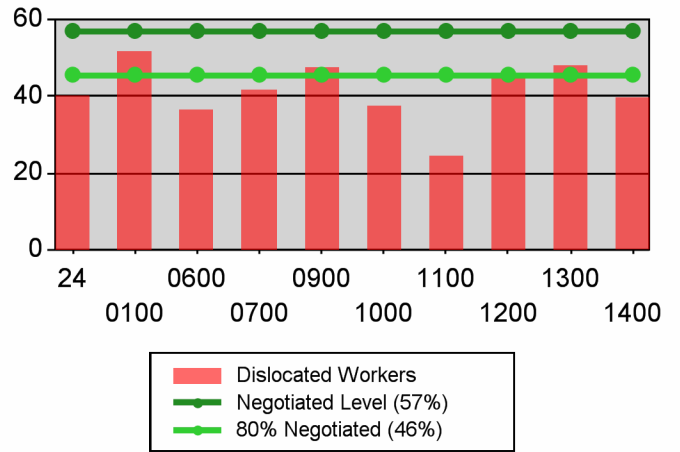
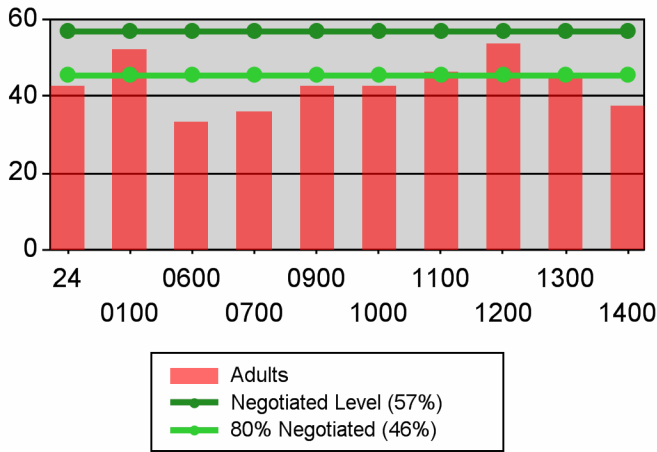
07/01/2009 - 09/30/2009		Served	Exited		
Total Participants	Adults	1,072	668		
	DW	413	346		
	Youth (14-21)	57	*		
10/01/2008 - 12/31/2008		N	D	Actual	Negotiated (80%)
Entered Employment Rate	Adults	60	160	37.5 <i>N</i>	57.0 (45.6)
	DW	59	149	39.6 <i>N</i>	57.0 (45.6)
	NEG	0	0		
04/01/2008 - 06/30/2008		N	D	Actual	Negotiated (80%)
Employment Retention Rate	Adults	7	7	100.0 <i>E</i>	81.0 (64.8)
	DW	18	19	94.7 <i>E</i>	81.0 (64.8)
	NEG	0	0		
04/01/2008 - 06/30/2008		N	D	Actual	Negotiated (80%)
Average Earnings	Adults	69,484	7	9,926.3 <i>M</i>	10,200.0 (8,160.0)
	DW	163,244	16	10,202.8 <i>N</i>	13,000.0 (10,400.0)
	NEG	0	0		
10/01/2008 - 12/31/2008		N	D	Actual	Negotiated (80%)
Placement in Employment or Education	Youth (14-21)	*	*	50.0 <i>N</i>	70.0 (56.0)
Attainment of a Degree or Certificate	Youth (14-21)	*	*	66.7 <i>M</i>	67.0 (53.6)
07/01/2009 - 09/30/2009		N	D	Actual	Negotiated (80%)
Literacy and Numeracy Gains	Youth (14-21)	0	*	0.0 <i>N</i>	30.0 (24.0)

<i>Not Met</i>	<i>Met</i>	<i>Exceeded</i>
5	2	2

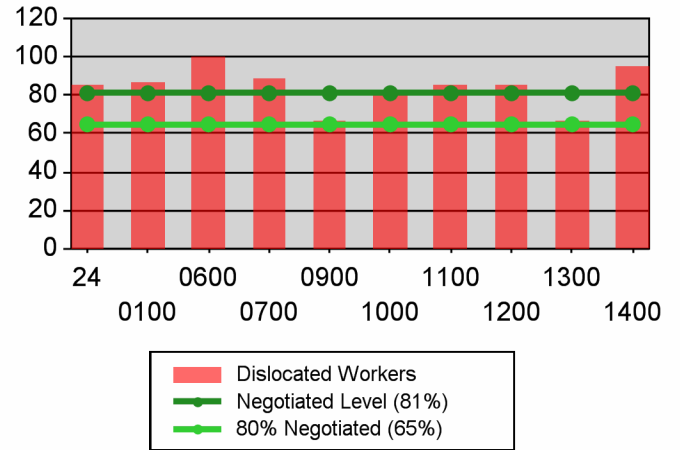
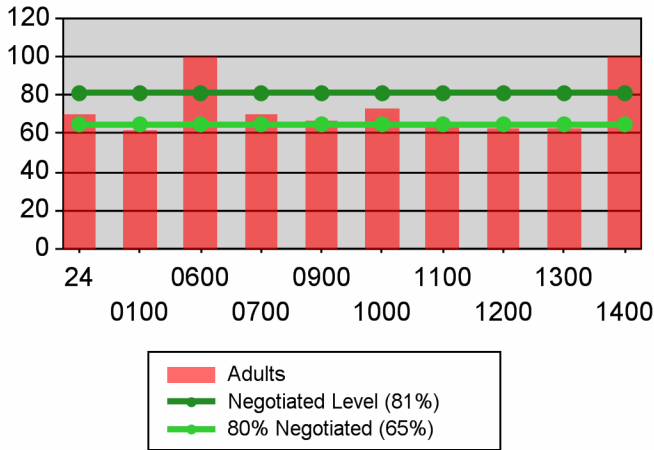
Table O - Local Performance (Common Exit)

Program Year 2009 - 1st Qtr (Year-to-Date)

Entered Employment Rate



Retention Rate



Average Earnings

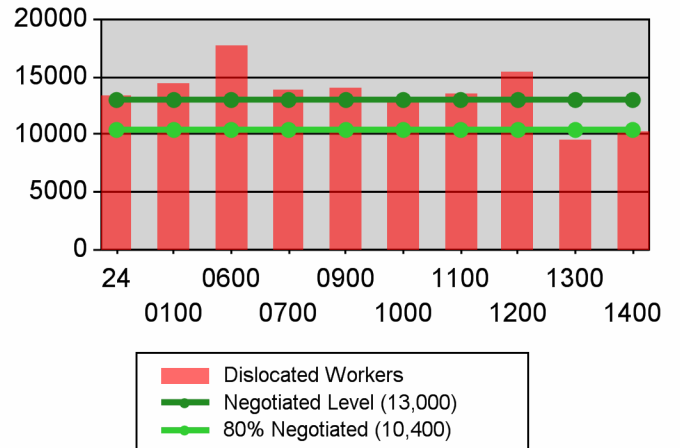
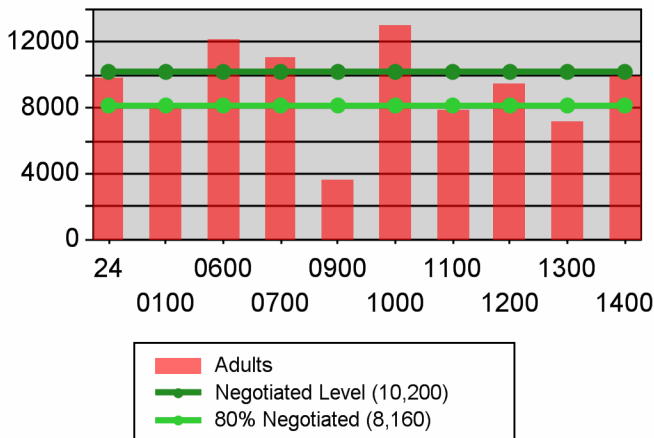


Table O - Local Performance (Common Exit)

Program Year 2009 - 1st Qtr (Year-to-Date)

Youth

