

## WIA Quarterly Report (ETA Form 9090)

**Statewide  
PY 2009 Qtr-2**

Cumulative Time Period	Total Participants	Current Quarter (Most Recent)		Cumulative 4-Quarter Reporting Period	
		Value	Numerator Denominator	Value	Numerator Denominator
1/1/2009 - 12/31/2009	Total Adult Customers	123,779		278,167	
	Total Adult self-service only	6		8	
	WIA Adult	72,289		168,017	
	WIA Dislocated Worker	49,007		107,361	
	Natl Emergency Grant	2,483		2,789	
	Received Training Services	1,393		6,067	
	Received Training Services - Adults	693		2,900	
	Received Training Services - Dislocated Workers	700		3,167	
	Total Youth (14-21)	2,297		3,440	
	Younger Youth (14-18)	1,657		2,514	
	Older Youth (19-21)	640		926	
	Out-of-School Youth	1,136		1,727	
	In-School Youth	1,161		1,713	

Cumulative Time Period	Total Exiters	Current Quarter (Most Recent)		Cumulative 4-Quarter Reporting Period	
		Value	Numerator Denominator	Value	Numerator Denominator
10/1/2008 - 9/30/2009	Total Adult Customers	54,536		171,315	
	Total Adult self-service only	0		*	
	WIA Adult	36,914		106,394	
	WIA Dislocated Worker	17,455		64,574	
	Natl Emergency Grant	167		347	
	Received Training Services	0		1,620	
	Received Training Services - Adults	0		769	
	Received Training Services - Dislocated Workers	0		851	
	Total Youth (14-21)	461		1,368	
	Younger Youth (14-18)	335		1,027	
	Older Youth (19-21)	126		341	
	Out-of-School Youth	226		712	
	In-School Youth	235		656	

\* Data suppressed for confidentiality purposes

## WIA Quarterly Report (ETA Form 9090)

**Statewide  
PY 2009 Qtr-2**

Cumulative Time Period	WIA Youth (14-21)	Current Quarter (Most Recent)		Cumulative 4-Qtr Reporting Period		Neg Perf (80%)
		Value	Numerator Denominator	Value	Numerator Denominator	
4/1/2008 - 3/31/2009	Placement in Employment or Education	52.8%	95 180	64.3%	784 1,219	70.0% (56.0%)
4/1/2008 - 3/31/2009	Attainment of a Degree or Certificate	42.5%	71 167	58.5%	639 1,092	67.0% (53.6%)
1/1/2009 - 12/31/2009	Literacy and Numeracy Gains	24.2%	23 95	24.9%	139 558	30.0% (24.0%)

Cumulative Time Period	Entered Employment Rate	Current Quarter (Most Recent)		Cumulative 4-Qtr Reporting Period		Neg Perf (80%)
		Value	Numerator Denominator	Value	Numerator Denominator	
4/1/2008 - 3/31/2009	Adult Program Results	45.8%	8,746 19,092	46.2%	12,774 27,648	73.0% (58.4%)
	Dislocated Worker Program Results	45.0%	7,781 17,274	45.8%	11,178 24,430	74.0% (59.2%)
	Natl Emergency Grant	71.7%	38 53	65.3%	177 271	

Cumulative Time Period	Retention Rate	Current Quarter (Most Recent)		Cumulative 4-Qtr Reporting Period		Neg Perf (80%)
		Value	Numerator Denominator	Value	Numerator Denominator	
10/1/2007 - 9/30/2008	Adult Program Results	74.2%	1,318 1,777	77.1%	2,444 3,168	81.0% (64.8%)
	Dislocated Worker Program Results	70.7%	537 760	80.4%	1,791 2,228	81.0% (64.8%)
	Natl Emergency Grant	73.9%	34 46	82.9%	199 240	

Cumulative Time Period	Average Earnings	Current Quarter (Most Recent)		Cumulative 4-Qtr Reporting Period		Neg Perf (80%)
		Value	Numerator Denominator	Value	Numerator Denominator	
10/1/2007 - 9/30/2008	Adult Program Results	\$10,377.9	13,646,962 1,315	\$10,650.5	25,625,191 2,406	\$10,200 (\$8,160)
	Dislocated Worker Program Results	\$11,151.4	5,977,175 536	\$12,955.6	22,957,351 1,772	\$13,000 (\$10,400)
	Natl Emergency Grant	\$12,173.2	401,717 33	\$13,649.8	2,702,661 198	

Performance was Calculated: 2/10/2010 4:20:20 PM

\* Data suppressed for confidentiality purposes

State of Oregon - Department of Community Colleges and Workforce Development

Table O - Local Performance

Program Year 2009 - 2nd Qtr (Single Quarter)

Local Area Name: 00 - Statewide

		Served	Exited		
Total Participants	Adults	72,289	36,914		
	DW	49,007	17,455		
	Youth (14-21)	2,297	461		
		N	D	Actual	Negotiated (80%)
Entered Employment Rate	Adults	8,746	19,092	45.8 N	73.0 (58.4)
	DW	7,781	17,274	45.0 N	74.0 (59.2)
		N	D	Actual	Negotiated (80%)
Employment Retention Rate	Adults	1,318	1,777	74.2 M	81.0 (64.8)
	DW	537	760	70.7 M	81.0 (64.8)
		N	D	Actual	Negotiated (80%)
Average Earnings	Adults	13,646,962	1,315	10,377.9 E	10,200.0 (8,160.0)
	DW	5,977,175	536	11,151.4 E	13,000.0 (10,400.0)
		N	D	Actual	Negotiated (80%)
Placement in Employment or Education	Youth (14-21)	95	180	52.8 N	70.0 (56.0)
Attainment of a Degree or Certificate	Youth (14-21)	71	167	42.5 N	67.0 (53.6)
Literacy and Numeracy Gains	Youth (14-21)	23	95	24.2 M	30.0 (24.0)

Not Met	Met	Exceeded
4	3	2

State of Oregon - Department of Community Colleges and Workforce Development

**Table O - Local Performance**

Program Year 2009 - 2nd Qtr (Single Quarter)

Local Area Name: 02 - Worksystems Inc

		Served	Exited		
Total Participants	Adults	22,367	8,932		
	DW	20,720	8,162		
	Youth (14-21)	513	86		
		N	D	Actual	Negotiated (80%)
Entered Employment Rate	Adults	2,481	5,703	43.5 <i>N</i>	73.0 (58.4)
	DW	2,259	5,225	43.2 <i>N</i>	74.0 (59.2)
		N	D	Actual	Negotiated (80%)
Employment Retention Rate	Adults	83	108	76.9 <i>M</i>	81.0 (64.8)
	DW	78	108	72.2 <i>M</i>	81.0 (64.8)
		N	D	Actual	Negotiated (80%)
Average Earnings	Adults	911,478	80	11,393.5 <i>E</i>	10,200.0 (8,160.0)
	DW	982,438	78	12,595.4 <i>E</i>	13,000.0 (10,400.0)
		N	D	Actual	Negotiated (80%)
Placement in Employment or Education	Youth (14-21)	31	51	60.8 <i>M</i>	70.0 (56.0)
Attainment of a Degree or Certificate	Youth (14-21)	40	56	71.4 <i>E</i>	67.0 (53.6)
Literacy and Numeracy Gains	Youth (14-21)	*	9	33.3 <i>E</i>	30.0 (24.0)

<i>Not Met</i>	<i>Met</i>	<i>Exceeded</i>
2	3	4

State of Oregon - Department of Community Colleges and Workforce Development

**Table O - Local Performance**

Program Year 2009 - 2nd Qtr (Single Quarter)

Local Area Name: 03 - Enterprise for Employment & Education

		Served	Exited		
Total Participants	Adults	8,429	5,363		
	DW	3,333	1,004		
	Youth (14-21)	316	75		
		N	D	Actual	Negotiated (80%)
Entered Employment Rate	Adults	1,037	2,085	49.7 N	73.0 (58.4)
	DW	514	1,225	42.0 N	74.0 (59.2)
		N	D	Actual	Negotiated (80%)
Employment Retention Rate	Adults	1,033	1,412	73.2 M	81.0 (64.8)
	DW	236	351	67.2 M	81.0 (64.8)
		N	D	Actual	Negotiated (80%)
Average Earnings	Adults	10,360,001	1,033	10,029.0 E	10,200.0 (8,160.0)
	DW	2,101,888	235	8,944.2 E	13,000.0 (10,400.0)
		N	D	Actual	Negotiated (80%)
Placement in Employment or Education	Youth (14-21)	13	27	48.1 N	70.0 (56.0)
Attainment of a Degree or Certificate	Youth (14-21)	*	16	31.3 N	67.0 (53.6)
Literacy and Numeracy Gains	Youth (14-21)	9	37	24.3 M	30.0 (24.0)

Not Met	Met	Exceeded
4	3	2

State of Oregon - Department of Community Colleges and Workforce Development

Table O - Local Performance

Program Year 2009 - 2nd Qtr (Single Quarter)

Local Area Name: 04 - Community Service Consortium

		Served	Exited		
Total Participants	Adults	9,158	2,895		
	DW	7,874	2,421		
	Youth (14-21)	304	12		
		N	D	Actual	Negotiated (80%)
Entered Employment Rate	Adults	1,078	2,316	46.5 N	73.0 (58.4)
	DW	1,005	2,133	47.1 N	74.0 (59.2)
		N	D	Actual	Negotiated (80%)
Employment Retention Rate	Adults	16	22	72.7 M	81.0 (64.8)
	DW	27	36	75.0 M	81.0 (64.8)
		N	D	Actual	Negotiated (80%)
Average Earnings	Adults	193,826	16	12,114.1 E	10,200.0 (8,160.0)
	DW	386,224	27	14,304.6 E	13,000.0 (10,400.0)
		N	D	Actual	Negotiated (80%)
Placement in Employment or Education	Youth (14-21)	6	14	42.9 N	70.0 (56.0)
Attainment of a Degree or Certificate	Youth (14-21)	6	12	50.0 N	67.0 (53.6)
Literacy and Numeracy Gains	Youth (14-21)	0	0	N	30.0 (24.0)

Not Met	Met	Exceeded
5	2	2

State of Oregon - Department of Community Colleges and Workforce Development

**Table O - Local Performance**

Program Year 2009 - 2nd Qtr (Single Quarter)

Local Area Name: 05 - Lane Workforce Partnership

		Served	Exited		
Total Participants	Adults	5,838	3,920		
	DW	2,575	873		
	Youth (14-21)	206	30		
		N	D	Actual	Negotiated (80%)
Entered Employment Rate	Adults	395	1,015	38.9 N	73.0 (58.4)
	DW	307	797	38.5 N	74.0 (59.2)
		N	D	Actual	Negotiated (80%)
Employment Retention Rate	Adults	50	55	90.9 E	81.0 (64.8)
	DW	36	42	85.7 E	81.0 (64.8)
		N	D	Actual	Negotiated (80%)
Average Earnings	Adults	768,789	50	15,375.8 E	10,200.0 (8,160.0)
	DW	559,734	36	15,548.2 E	13,000.0 (10,400.0)
		N	D	Actual	Negotiated (80%)
Placement in Employment or Education	Youth (14-21)	*	9	55.6 N	70.0 (56.0)
Attainment of a Degree or Certificate	Youth (14-21)	*	9	55.6 M	67.0 (53.6)
Literacy and Numeracy Gains	Youth (14-21)	*	13	15.4 N	30.0 (24.0)

Not Met	Met	Exceeded
4	1	4

State of Oregon - Department of Community Colleges and Workforce Development

**Table O - Local Performance**

Program Year 2009 - 2nd Qtr (Single Quarter)

Local Area Name: 08 - Rogue Valley Workforce Development Council

		Served	Exited		
Total Participants	Adults	4,109	2,279		
	DW	1,818	503		
	Youth (14-21)	171	10		
		N	D	Actual	Negotiated (80%)
Entered Employment Rate	Adults	373	884	42.2 <i>N</i>	73.0 (58.4)
	DW	398	963	41.3 <i>N</i>	74.0 (59.2)
		N	D	Actual	Negotiated (80%)
Employment Retention Rate	Adults	13	14	92.9 <i>E</i>	81.0 (64.8)
	DW	25	33	75.8 <i>M</i>	81.0 (64.8)
		N	D	Actual	Negotiated (80%)
Average Earnings	Adults	139,123	13	10,701.8 <i>E</i>	10,200.0 (8,160.0)
	DW	255,920	25	10,236.8 <i>E</i>	13,000.0 (10,400.0)
		N	D	Actual	Negotiated (80%)
Placement in Employment or Education	Youth (14-21)	*	7	57.1 <i>M</i>	70.0 (56.0)
Attainment of a Degree or Certificate	Youth (14-21)	0	*	0.0 <i>N</i>	67.0 (53.6)
Literacy and Numeracy Gains	Youth (14-21)	0	*	0.0 <i>N</i>	30.0 (24.0)

<i>Not Met</i>	<i>Met</i>	<i>Exceeded</i>
4	2	3



State of Oregon - Department of Community Colleges and Workforce Development

**Table O - Local Performance**

Program Year 2009 - 2nd Qtr (Single Quarter)

Local Area Name: 16 - Workforce Investment Council of Clackamas County

		Served	Exited		
Total Participants	Adults	6,094	2,417		
	DW	5,711	2,209		
	Youth (14-21)	231	25		
		N	D	Actual	Negotiated (80%)
Entered Employment Rate	Adults	829	1,846	44.9 <i>N</i>	73.0 (58.4)
	DW	748	1,691	44.2 <i>N</i>	74.0 (59.2)
		N	D	Actual	Negotiated (80%)
Employment Retention Rate	Adults	25	34	73.5 <i>M</i>	81.0 (64.8)
	DW	26	42	61.9 <i>N</i>	81.0 (64.8)
		N	D	Actual	Negotiated (80%)
Average Earnings	Adults	247,019	25	9,880.8 <i>E</i>	10,200.0 (8,160.0)
	DW	393,468	26	15,133.4 <i>E</i>	13,000.0 (10,400.0)
		N	D	Actual	Negotiated (80%)
Placement in Employment or Education	Youth (14-21)	9	16	56.3 <i>M</i>	70.0 (56.0)
Attainment of a Degree or Certificate	Youth (14-21)	10	14	71.4 <i>E</i>	67.0 (53.6)
Literacy and Numeracy Gains	Youth (14-21)	*	*	25.0 <i>M</i>	30.0 (24.0)

<i>Not Met</i>	<i>Met</i>	<i>Exceeded</i>
3	3	3

State of Oregon - Department of Community Colleges and Workforce Development

Table O - Local Performance

Program Year 2009 - 2nd Qtr (Single Quarter)

Local Area Name: 24 - The Oregon Consortium/Workforce Alliance

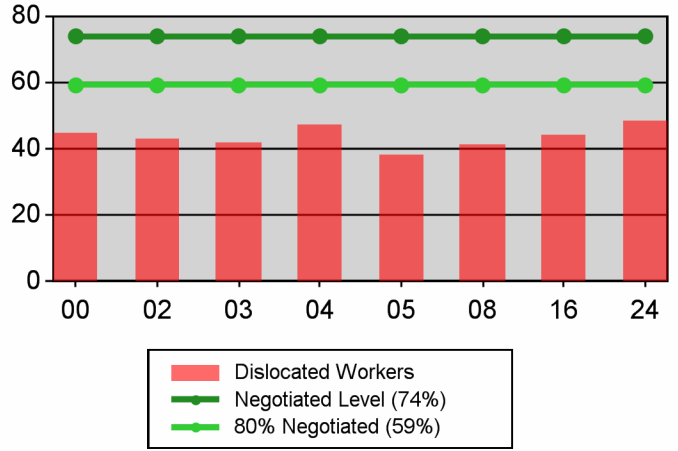
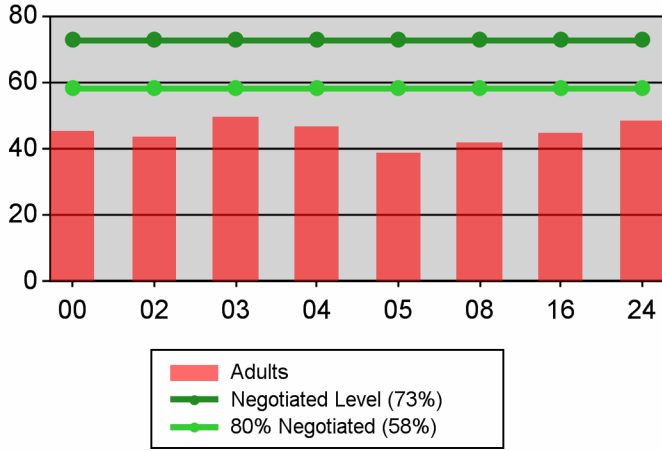
		Served	Exited		
Total Participants	Adults	16,294	11,108		
	DW	6,976	2,283		
	Youth (14-21)	556	223		
		N	D	Actual	Negotiated (80%)
Entered Employment Rate	Adults	2,553	5,243	48.7 N	73.0 (58.4)
	DW	2,550	5,240	48.7 N	74.0 (59.2)
		N	D	Actual	Negotiated (80%)
Employment Retention Rate	Adults	98	132	74.2 M	81.0 (64.8)
	DW	109	148	73.6 M	81.0 (64.8)
		N	D	Actual	Negotiated (80%)
Average Earnings	Adults	1,026,726	98	10,476.8 E	10,200.0 (8,160.0)
	DW	1,297,502	109	11,903.7 E	13,000.0 (10,400.0)
		N	D	Actual	Negotiated (80%)
Placement in Employment or Education	Youth (14-21)	27	56	48.2 N	70.0 (56.0)
Attainment of a Degree or Certificate	Youth (14-21)	*	59	8.5 N	67.0 (53.6)
Literacy and Numeracy Gains	Youth (14-21)	8	30	26.7 M	30.0 (24.0)

Not Met	Met	Exceeded
4	3	2

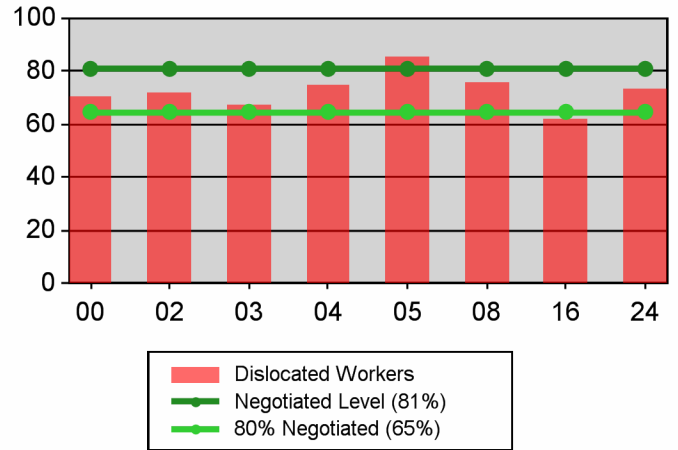
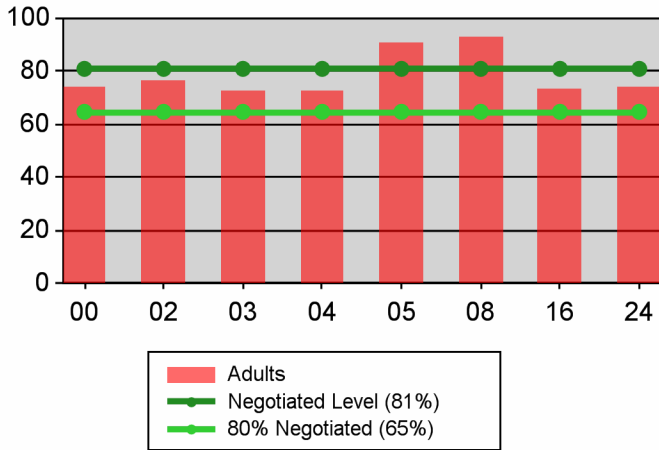
**Table O - Local Performance**

Program Year 2009 - 2nd Qtr (Single Quarter)

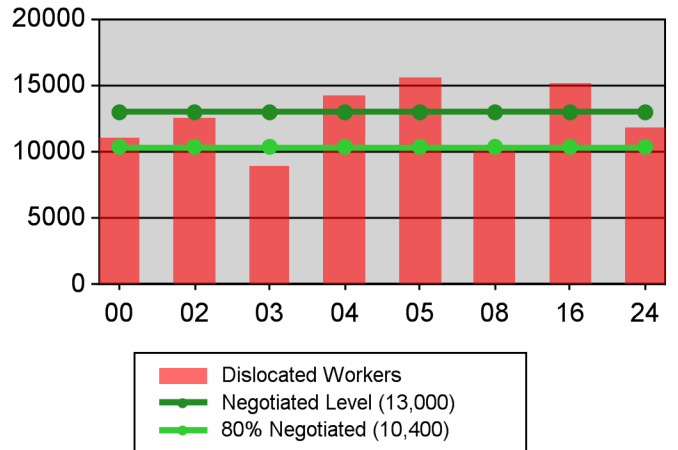
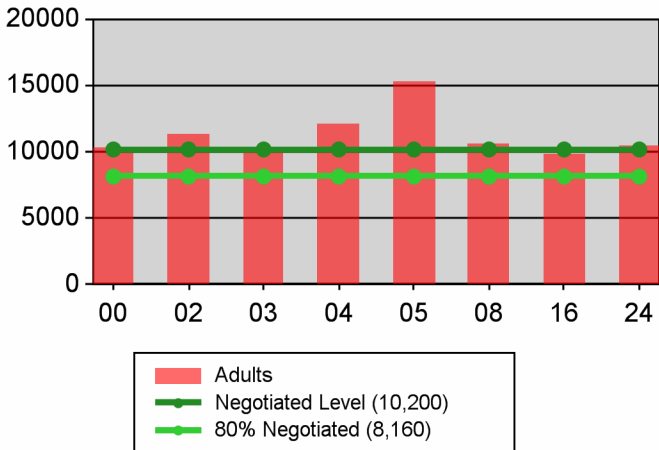
**Entered Employment Rate**



**Retention Rate**



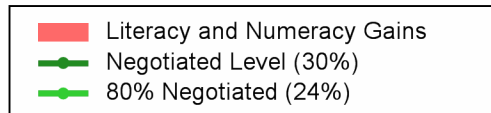
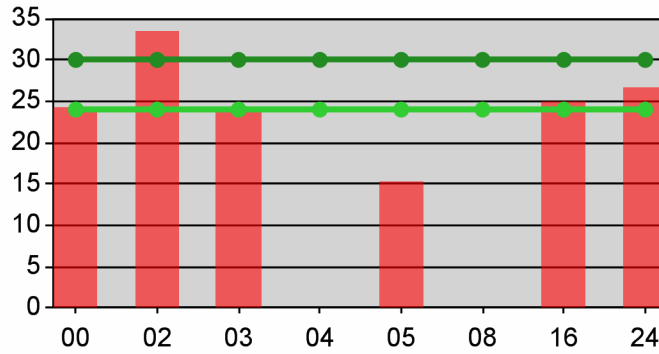
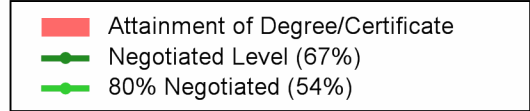
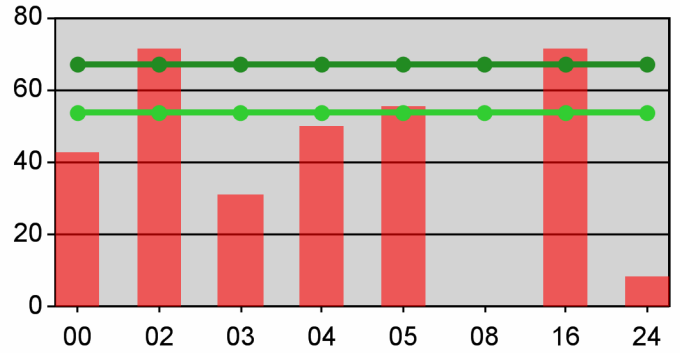
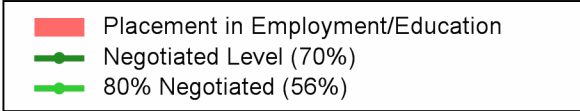
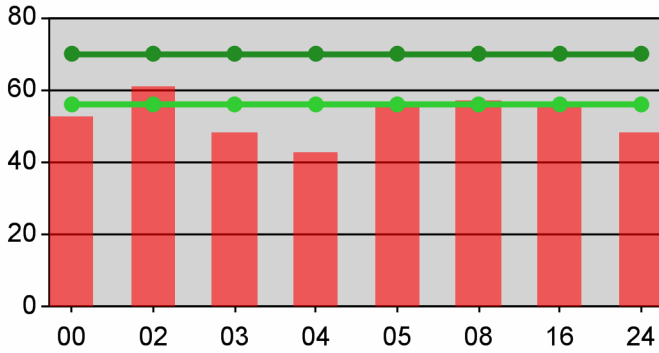
**Average Earnings**



**Table O - Local Performance**

Program Year 2009 - 2nd Qtr (Single Quarter)

**Youth**



State of Oregon - Department of Community Colleges and Workforce Development

**Table O - Local Performance (Common Exit)**

Program Year 2009 - 2nd Qtr (Year-to-Date)

Local Area Name: 24 - The Oregon Consortium/Workforce Alliance

07/01/2009 - 12/31/2009		Served	Exited		
<b>Total Participants</b>	Adults	29,503	18,190		
	DW	12,104	6,889		
	Youth (14-21)	717	248		
10/01/2008 - 03/31/2009		N	D	Actual	Negotiated (80%)
<b>Entered Employment Rate</b>	Adults	3,202	6,608	48.5 <i>M</i>	57.0 (45.6)
	DW	2,938	6,132	47.9 <i>M</i>	57.0 (45.6)
	NEG	34	54	63.0	
04/01/2008 - 09/30/2008		N	D	Actual	Negotiated (80%)
<b>Employment Retention Rate</b>	Adults	153	205	74.6 <i>M</i>	81.0 (64.8)
	DW	219	275	79.6 <i>M</i>	81.0 (64.8)
	NEG	40	54	74.1	
04/01/2008 - 09/30/2008		N	D	Actual	Negotiated (80%)
<b>Average Earnings</b>	Adults	1,580,966	153	10,333.1 <i>E</i>	10,200.0 (8,160.0)
	DW	2,784,154	217	12,830.2 <i>M</i>	13,000.0 (10,400.0)
	NEG	407,184	40	10,179.6	
10/01/2008 - 03/31/2009		N	D	Actual	Negotiated (80%)
<b>Placement in Employment or Education</b>	Youth (14-21)	65	117	55.6 <i>N</i>	70.0 (56.0)
<b>Attainment of a Degree or Certificate</b>	Youth (14-21)	81	119	68.1 <i>E</i>	67.0 (53.6)
07/01/2009 - 12/31/2009		N	D	Actual	Negotiated (80%)
<b>Literacy and Numeracy Gains</b>	Youth (14-21)	12	60	20.0 <i>N</i>	30.0 (24.0)

<i>Not Met</i>	<i>Met</i>	<i>Exceeded</i>
2	5	2

State of Oregon - Department of Community Colleges and Workforce Development

**Table O - Local Performance (Common Exit)**

Program Year 2009 - 2nd Qtr (Year-to-Date)

**Local Area Name: 240100 - Management Training Corp**

07/01/2009 - 12/31/2009		Served	Exited		
<b>Total Participants</b>	Adults	3,467	1,828		
	DW	1,546	805		
	Youth (14-21)	94	50		
10/01/2008 - 03/31/2009		N	D	Actual	Negotiated (80%)
<b>Entered Employment Rate</b>	Adults	248	491	50.5 <i>M</i>	57.0 (45.6)
	DW	227	448	50.7 <i>M</i>	57.0 (45.6)
	NEG	21	35	60.0	
04/01/2008 - 09/30/2008		N	D	Actual	Negotiated (80%)
<b>Employment Retention Rate</b>	Adults	21	30	70.0 <i>M</i>	81.0 (64.8)
	DW	37	42	88.1 <i>E</i>	81.0 (64.8)
	NEG	10	18	55.6	
04/01/2008 - 09/30/2008		N	D	Actual	Negotiated (80%)
<b>Average Earnings</b>	Adults	183,674	21	8,746.4 <i>M</i>	10,200.0 (8,160.0)
	DW	511,269	37	13,818.1 <i>E</i>	13,000.0 (10,400.0)
	NEG	98,279	10	9,827.9	
10/01/2008 - 03/31/2009		N	D	Actual	Negotiated (80%)
<b>Placement in Employment or Education</b>	Youth (14-21)	13	29	44.8 <i>N</i>	70.0 (56.0)
	<b>Attainment of a Degree or Certificate</b>	Youth (14-21)	11	21	52.4 <i>N</i>
07/01/2009 - 12/31/2009		N	D	Actual	Negotiated (80%)
<b>Literacy and Numeracy Gains</b>	Youth (14-21)	*	21	9.5 <i>N</i>	30.0 (24.0)

<i>Not Met</i>	<i>Met</i>	<i>Exceeded</i>
3	4	2

State of Oregon - Department of Community Colleges and Workforce Development

**Table O - Local Performance (Common Exit)**

Program Year 2009 - 2nd Qtr (Year-to-Date)

Local Area Name: 240600 - Umpqua Training & Employment

07/01/2009 - 12/31/2009		Served	Exited		
<b>Total Participants</b>	Adults	3,472	2,199		
	DW	1,470	919		
	Youth (14-21)	102	37		
10/01/2008 - 03/31/2009		N	D	Actual	Negotiated (80%)
<b>Entered Employment Rate</b>	Adults	317	783	40.5 <i>N</i>	57.0 (45.6)
	DW	399	971	41.1 <i>N</i>	57.0 (45.6)
	NEG	0	0		
04/01/2008 - 09/30/2008		N	D	Actual	Negotiated (80%)
<b>Employment Retention Rate</b>	Adults	11	12	91.7 <i>E</i>	81.0 (64.8)
	DW	16	19	84.2 <i>E</i>	81.0 (64.8)
	NEG	0	0		
04/01/2008 - 09/30/2008		N	D	Actual	Negotiated (80%)
<b>Average Earnings</b>	Adults	166,341	11	15,121.9 <i>E</i>	10,200.0 (8,160.0)
	DW	242,645	16	15,165.3 <i>E</i>	13,000.0 (10,400.0)
	NEG	0	0		
10/01/2008 - 03/31/2009		N	D	Actual	Negotiated (80%)
<b>Placement in Employment or Education</b>	Youth (14-21)	13	19	68.4 <i>M</i>	70.0 (56.0)
	<b>Attainment of a Degree or Certificate</b>	Youth (14-21)	17	22	77.3 <i>E</i>
07/01/2009 - 12/31/2009		N	D	Actual	Negotiated (80%)
<b>Literacy and Numeracy Gains</b>	Youth (14-21)	*	15	26.7 <i>M</i>	30.0 (24.0)

<i>Not Met</i>	<i>Met</i>	<i>Exceeded</i>
2	2	5

State of Oregon - Department of Community Colleges and Workforce Development

**Table O - Local Performance (Common Exit)**

Program Year 2009 - 2nd Qtr (Year-to-Date)

**Local Area Name: 240700 - South Coast Business Employment Corp.**

07/01/2009 - 12/31/2009		Served	Exited		
<b>Total Participants</b>	Adults	2,713	1,686		
	DW	975	611		
	Youth (14-21)	75	18		
10/01/2008 - 03/31/2009		N	D	Actual	Negotiated (80%)
<b>Entered Employment Rate</b>	Adults	236	608	38.8 <i>N</i>	57.0 (45.6)
	DW	222	473	46.9 <i>M</i>	57.0 (45.6)
	NEG	0	0		
04/01/2008 - 09/30/2008		N	D	Actual	Negotiated (80%)
<b>Employment Retention Rate</b>	Adults	22	30	73.3 <i>M</i>	81.0 (64.8)
	DW	17	21	81.0 <i>M</i>	81.0 (64.8)
	NEG	0	0		
04/01/2008 - 09/30/2008		N	D	Actual	Negotiated (80%)
<b>Average Earnings</b>	Adults	226,320	22	10,287.3 <i>E</i>	10,200.0 (8,160.0)
	DW	205,751	17	12,103.0 <i>M</i>	13,000.0 (10,400.0)
	NEG	0	0		
10/01/2008 - 03/31/2009		N	D	Actual	Negotiated (80%)
<b>Placement in Employment or Education</b>	Youth (14-21)	11	16	68.8 <i>M</i>	70.0 (56.0)
	<b>Attainment of a Degree or Certificate</b>	Youth (14-21)	18	24	75.0 <i>E</i>
07/01/2009 - 12/31/2009		N	D	Actual	Negotiated (80%)
<b>Literacy and Numeracy Gains</b>	Youth (14-21)	0	*	0.0 <i>N</i>	30.0 (24.0)

<i>Not Met</i>	<i>Met</i>	<i>Exceeded</i>
2	5	2



State of Oregon - Department of Community Colleges and Workforce Development

**Table O - Local Performance (Common Exit)**

Program Year 2009 - 2nd Qtr (Year-to-Date)

Local Area Name: 240900 - Mid-Columbia Council Of Governments

07/01/2009 - 12/31/2009		Served	Exited		
<b>Total Participants</b>	Adults	1,817	948		
	DW	862	337		
	Youth (14-21)	24	14		
10/01/2008 - 03/31/2009		N	D	Actual	Negotiated (80%)
<b>Entered Employment Rate</b>	Adults	164	292	56.2 <i>M</i>	57.0 (45.6)
	DW	112	196	57.1 <i>E</i>	57.0 (45.6)
	NEG	0	0		
04/01/2008 - 09/30/2008		N	D	Actual	Negotiated (80%)
<b>Employment Retention Rate</b>	Adults	8	10	80.0 <i>M</i>	81.0 (64.8)
	DW	9	11	81.8 <i>E</i>	81.0 (64.8)
	NEG	0	0		
04/01/2008 - 09/30/2008		N	D	Actual	Negotiated (80%)
<b>Average Earnings</b>	Adults	67,513	8	8,439.1 <i>M</i>	10,200.0 (8,160.0)
	DW	121,258	9	13,473.1 <i>E</i>	13,000.0 (10,400.0)
	NEG	0	0		
10/01/2008 - 03/31/2009		N	D	Actual	Negotiated (80%)
<b>Placement in Employment or Education</b>	Youth (14-21)	*	11	45.5 <i>N</i>	70.0 (56.0)
<b>Attainment of a Degree or Certificate</b>	Youth (14-21)	*	6	83.3 <i>E</i>	67.0 (53.6)
07/01/2009 - 12/31/2009		N	D	Actual	Negotiated (80%)
<b>Literacy and Numeracy Gains</b>	Youth (14-21)	0	*	0.0 <i>N</i>	30.0 (24.0)

<i>Not Met</i>	<i>Met</i>	<i>Exceeded</i>
2	3	4

State of Oregon - Department of Community Colleges and Workforce Development

**Table O - Local Performance (Common Exit)**

Program Year 2009 - 2nd Qtr (Year-to-Date)

**Local Area Name: 241000 - Central Oregon Intergovernment Council**

07/01/2009 - 12/31/2009		Served	Exited		
<b>Total Participants</b>	Adults	8,088	4,823		
	DW	3,290	2,039		
	Youth (14-21)	124	36		
10/01/2008 - 03/31/2009		N	D	Actual	Negotiated (80%)
<b>Entered Employment Rate</b>	Adults	983	2,099	46.8 <i>M</i>	57.0 (45.6)
	DW	953	2,088	45.6 <i>M</i>	57.0 (45.6)
	NEG	13	18	72.2	
04/01/2008 - 09/30/2008		N	D	Actual	Negotiated (80%)
<b>Employment Retention Rate</b>	Adults	27	34	79.4 <i>M</i>	81.0 (64.8)
	DW	62	84	73.8 <i>M</i>	81.0 (64.8)
	NEG	27	33	81.8	
04/01/2008 - 09/30/2008		N	D	Actual	Negotiated (80%)
<b>Average Earnings</b>	Adults	284,592	27	10,540.4 <i>E</i>	10,200.0 (8,160.0)
	DW	744,339	62	12,005.5 <i>M</i>	13,000.0 (10,400.0)
	NEG	269,928	27	9,997.3	
10/01/2008 - 03/31/2009		N	D	Actual	Negotiated (80%)
<b>Placement in Employment or Education</b>	Youth (14-21)	8	14	57.1 <i>M</i>	70.0 (56.0)
	<b>Attainment of a Degree or Certificate</b>	Youth (14-21)	12	14	85.7 <i>E</i>
07/01/2009 - 12/31/2009		N	D	Actual	Negotiated (80%)
<b>Literacy and Numeracy Gains</b>	Youth (14-21)	*	*	66.7 <i>E</i>	30.0 (24.0)

<i>Not Met</i>	<i>Met</i>	<i>Exceeded</i>
0	6	3

State of Oregon - Department of Community Colleges and Workforce Development

**Table O - Local Performance (Common Exit)**

Program Year 2009 - 2nd Qtr (Year-to-Date)

**Local Area Name: 241100 - Central OR Intergovt Council - Klamath & Lake**

07/01/2009 - 12/31/2009		Served	Exited		
<b>Total Participants</b>	Adults	2,414	1,446		
	DW	951	469		
	Youth (14-21)	69	31		
10/01/2008 - 03/31/2009		N	D	Actual	Negotiated (80%)
<b>Entered Employment Rate</b>	Adults	183	396	46.2 <i>M</i>	57.0 (45.6)
	DW	126	335	37.6 <i>N</i>	57.0 (45.6)
	NEG	0	0		
04/01/2008 - 09/30/2008		N	D	Actual	Negotiated (80%)
<b>Employment Retention Rate</b>	Adults	9	18	50.0 <i>N</i>	81.0 (64.8)
	DW	7	8	87.5 <i>E</i>	81.0 (64.8)
	NEG	0	0		
04/01/2008 - 09/30/2008		N	D	Actual	Negotiated (80%)
<b>Average Earnings</b>	Adults	65,754	9	7,306.0 <i>N</i>	10,200.0 (8,160.0)
	DW	102,120	7	14,588.6 <i>E</i>	13,000.0 (10,400.0)
	NEG	0	0		
10/01/2008 - 03/31/2009		N	D	Actual	Negotiated (80%)
<b>Placement in Employment or Education</b>	Youth (14-21)	*	8	50.0 <i>N</i>	70.0 (56.0)
	<b>Attainment of a Degree or Certificate</b>	Youth (14-21)	8	37.5 <i>N</i>	67.0 (53.6)
07/01/2009 - 12/31/2009		N	D	Actual	Negotiated (80%)
<b>Literacy and Numeracy Gains</b>	Youth (14-21)	*	*	25.0 <i>M</i>	30.0 (24.0)

<i>Not Met</i>	<i>Met</i>	<i>Exceeded</i>
5	2	2

State of Oregon - Department of Community Colleges and Workforce Development

**Table O - Local Performance (Common Exit)**

Program Year 2009 - 2nd Qtr (Year-to-Date)

Local Area Name: 241200 - Community Action Programs of East Central Oregon

07/01/2009 - 12/31/2009		Served	Exited		
<b>Total Participants</b>	Adults	3,521	2,504		
	DW	1,223	698		
	Youth (14-21)	130	28		
10/01/2008 - 03/31/2009		N	D	Actual	Negotiated (80%)
<b>Entered Employment Rate</b>	Adults	480	866	55.4 <i>M</i>	57.0 (45.6)
	DW	343	623	55.1 <i>M</i>	57.0 (45.6)
	NEG	0	*	0.0	
04/01/2008 - 09/30/2008		N	D	Actual	Negotiated (80%)
<b>Employment Retention Rate</b>	Adults	27	33	81.8 <i>E</i>	81.0 (64.8)
	DW	18	23	78.3 <i>M</i>	81.0 (64.8)
	NEG	*	*	100.0	
04/01/2008 - 09/30/2008		N	D	Actual	Negotiated (80%)
<b>Average Earnings</b>	Adults	340,548	27	12,612.9 <i>E</i>	10,200.0 (8,160.0)
	DW	263,805	18	14,655.8 <i>E</i>	13,000.0 (10,400.0)
	NEG	38,977	*	12,992.3	
10/01/2008 - 03/31/2009		N	D	Actual	Negotiated (80%)
<b>Placement in Employment or Education</b>	Youth (14-21)	*	10	40.0 <i>N</i>	70.0 (56.0)
	<b>Attainment of a Degree or Certificate</b>	Youth (14-21)	8	13	61.5 <i>M</i>
07/01/2009 - 12/31/2009		N	D	Actual	Negotiated (80%)
<b>Literacy and Numeracy Gains</b>	Youth (14-21)	*	*	75.0 <i>E</i>	30.0 (24.0)

<i>Not Met</i>	<i>Met</i>	<i>Exceeded</i>
1	4	4

State of Oregon - Department of Community Colleges and Workforce Development

**Table O - Local Performance (Common Exit)**

Program Year 2009 - 2nd Qtr (Year-to-Date)

Local Area Name: 241300 - Training & Employment Consortium - R13

07/01/2009 - 12/31/2009		Served	Exited		
<b>Total Participants</b>	Adults	2,128	1,381		
	DW	1,056	496		
	Youth (14-21)	42	11		
10/01/2008 - 03/31/2009		N	D	Actual	Negotiated (80%)
<b>Entered Employment Rate</b>	Adults	313	519	60.3 <i>E</i>	57.0 (45.6)
	DW	262	437	60.0 <i>E</i>	57.0 (45.6)
	NEG	0	0		
04/01/2008 - 09/30/2008		N	D	Actual	Negotiated (80%)
<b>Employment Retention Rate</b>	Adults	10	14	71.4 <i>M</i>	81.0 (64.8)
	DW	9	13	69.2 <i>M</i>	81.0 (64.8)
	NEG	0	0		
04/01/2008 - 09/30/2008		N	D	Actual	Negotiated (80%)
<b>Average Earnings</b>	Adults	86,687	10	8,668.7 <i>M</i>	10,200.0 (8,160.0)
	DW	84,998	9	9,444.2 <i>N</i>	13,000.0 (10,400.0)
	NEG	0	0		
10/01/2008 - 03/31/2009		N	D	Actual	Negotiated (80%)
<b>Placement in Employment or Education</b>	Youth (14-21)	*	7	71.4 <i>E</i>	70.0 (56.0)
<b>Attainment of a Degree or Certificate</b>	Youth (14-21)	*	7	71.4 <i>E</i>	67.0 (53.6)
07/01/2009 - 12/31/2009		N	D	Actual	Negotiated (80%)
<b>Literacy and Numeracy Gains</b>	Youth (14-21)	0	0		30.0 (24.0)

<i>Not Met</i>	<i>Met</i>	<i>Exceeded</i>
1	3	4

State of Oregon - Department of Community Colleges and Workforce Development

**Table O - Local Performance (Common Exit)**

Program Year 2009 - 2nd Qtr (Year-to-Date)

Local Area Name: 241400 - Training & Employment Consortium - R14

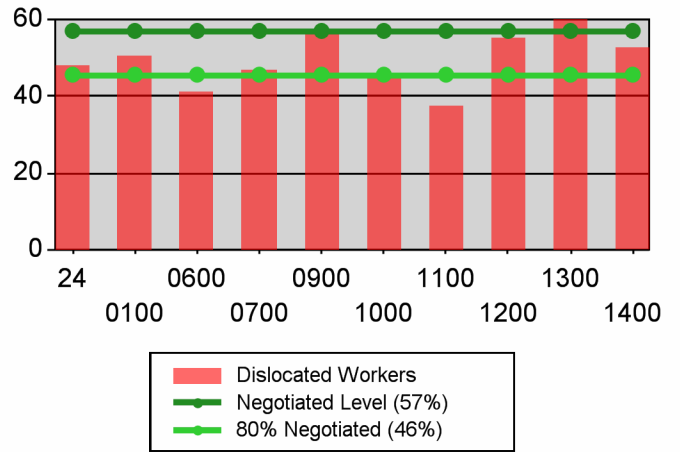
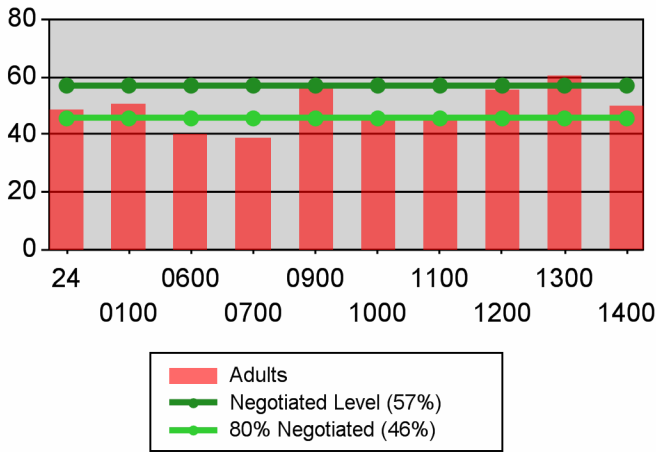
07/01/2009 - 12/31/2009		Served	Exited		
<b>Total Participants</b>	Adults	1,881	1,373		
	DW	731	515		
	Youth (14-21)	57	23		
10/01/2008 - 03/31/2009		N	D	Actual	Negotiated (80%)
<b>Entered Employment Rate</b>	Adults	278	554	50.2 <i>M</i>	57.0 (45.6)
	DW	294	561	52.4 <i>M</i>	57.0 (45.6)
	NEG	0	0		
04/01/2008 - 09/30/2008		N	D	Actual	Negotiated (80%)
<b>Employment Retention Rate</b>	Adults	18	24	75.0 <i>M</i>	81.0 (64.8)
	DW	44	54	81.5 <i>E</i>	81.0 (64.8)
	NEG	0	0		
04/01/2008 - 09/30/2008		N	D	Actual	Negotiated (80%)
<b>Average Earnings</b>	Adults	159,538	18	8,863.2 <i>M</i>	10,200.0 (8,160.0)
	DW	507,968	42	12,094.5 <i>M</i>	13,000.0 (10,400.0)
	NEG	0	0		
10/01/2008 - 03/31/2009		N	D	Actual	Negotiated (80%)
<b>Placement in Employment or Education</b>	Youth (14-21)	*	*	66.7 <i>M</i>	70.0 (56.0)
<b>Attainment of a Degree or Certificate</b>	Youth (14-21)	*	*	50.0 <i>N</i>	67.0 (53.6)
07/01/2009 - 12/31/2009		N	D	Actual	Negotiated (80%)
<b>Literacy and Numeracy Gains</b>	Youth (14-21)	0	*	0.0 <i>N</i>	30.0 (24.0)

<i>Not Met</i>	<i>Met</i>	<i>Exceeded</i>
2	6	1

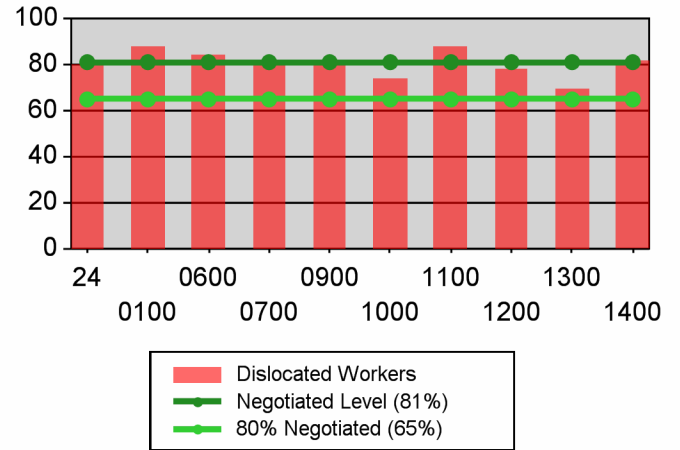
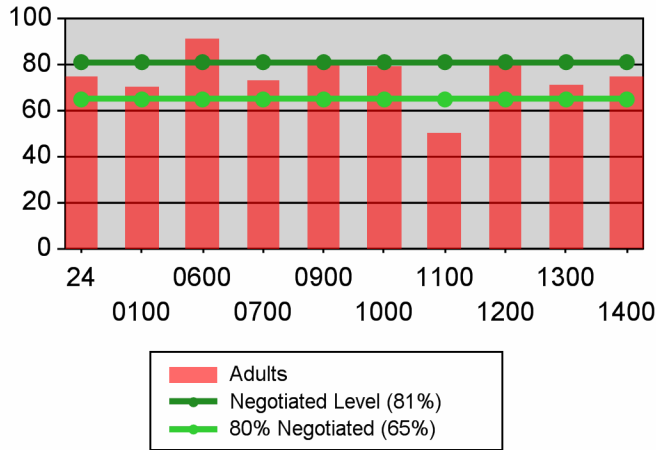
**Table O - Local Performance (Common Exit)**

Program Year 2009 - 2nd Qtr (Year-to-Date)

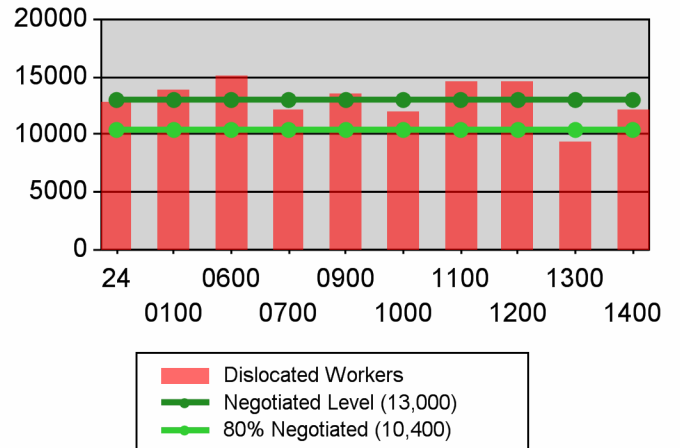
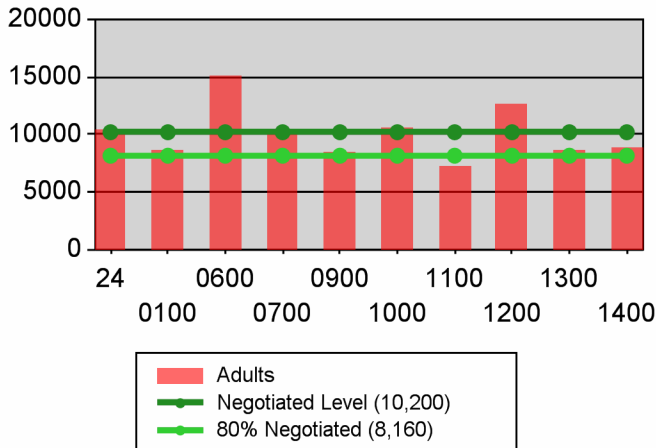
**Entered Employment Rate**



**Retention Rate**



**Average Earnings**



**Table O - Local Performance (Common Exit)**

Program Year 2009 - 2nd Qtr (Year-to-Date)

**Youth**

