

WIA Quarterly Report (ETA Form 9090) - Common Exits

**Statewide
PY 2009 Qtr-3**

Cumulative Time Period	Total Participants	Current Quarter (Most Recent)		Cumulative 4-Quarter Reporting Period	
		Value	Numerator Denominator	Value	Numerator Denominator
4/1/2009 - 3/31/2010	Total Adult Customers	85,239		203,524	
	Total Adult self-service only	28,159		95,275	
	WIA Adult	81,916		184,407	
	WIA Dislocated Worker	70,960		127,817	
	Natl Emergency Grant	3,235		3,725	
	Received Training Services	1,529		5,343	
	Received Training Services - Adults	1,350		4,423	
	Received Training Services - Dislocated Workers	1,290		4,391	
	Total Youth (14-21)	2,459		3,567	
	Younger Youth (14-18)	1,771		2,575	
	Older Youth (19-21)	688		992	
	Out-of-School Youth	1,235		1,830	
	In-School Youth	1,224		1,737	

Cumulative Time Period	Total Exitors	Current Quarter (Most Recent)		Cumulative 4-Quarter Reporting Period	
		Value	Numerator Denominator	Value	Numerator Denominator
1/1/2009 - 12/31/2009	Total Adult Customers	38,129		149,277	
	Total Adult self-service only	22,667		86,803	
	WIA Adult	36,784		125,671	
	WIA Dislocated Worker	18,811		72,807	
	Natl Emergency Grant	235		548	
	Received Training Services	0		1,668	
	Received Training Services - Adults	0		1,259	
	Received Training Services - Dislocated Workers	0		1,241	
	Total Youth (14-21)	290		1,394	
	Younger Youth (14-18)	183		1,007	
	Older Youth (19-21)	107		387	
	Out-of-School Youth	184		777	
	In-School Youth	106		617	

* Data suppressed for confidentiality purposes

WIA Quarterly Report (ETA Form 9090) - Common Exits

**Statewide
PY 2009 Qtr-3**

Cumulative Time Period	WIA Youth (14-21)	Current Quarter (Most Recent)		Cumulative 4-Qtr Reporting Period		Neg Perf (80%)
		Value	Numerator Denominator	Value	Numerator Denominator	
7/1/2008 - 6/30/2009	Placement in Employment or Education	62.3%	198 318	62.2%	652 1,049	70.0% (56.0%)
7/1/2008 - 6/30/2009	Attainment of a Degree or Certificate	73.9%	215 291	74.2%	703 948	67.0% (53.6%)
4/1/2009 - 3/31/2010	Literacy and Numeracy Gains	33.9%	57 168	28.4%	173 610	30.0% (24.0%)

Cumulative Time Period	Entered Employment Rate	Current Quarter (Most Recent)		Cumulative 4-Qtr Reporting Period		Neg Perf (80%)
		Value	Numerator Denominator	Value	Numerator Denominator	
7/1/2008 - 6/30/2009	Adult Program Results	47.4%	10,748 22,665	46.9%	21,959 46,864	57.0% (45.6%)
	Dislocated Worker Program Results	45.0%	8,893 19,763	45.3%	18,403 40,653	57.0% (45.6%)
	Natl Emergency Grant	64.3%	54 84	68.8%	172 250	

Cumulative Time Period	Retention Rate	Current Quarter (Most Recent)		Cumulative 4-Qtr Reporting Period		Neg Perf (80%)
		Value	Numerator Denominator	Value	Numerator Denominator	
1/1/2008 - 12/31/2008	Adult Program Results	80.7%	3,021 3,743	79.2%	5,022 6,339	81.0% (64.8%)
	Dislocated Worker Program Results	78.0%	1,494 1,916	78.6%	2,882 3,666	81.0% (64.8%)
	Natl Emergency Grant	75.0%	21 28	83.7%	174 208	

Cumulative Time Period	Average Earnings	Current Quarter (Most Recent)		Cumulative 4-Qtr Reporting Period		Neg Perf (80%)
		Value	Numerator Denominator	Value	Numerator Denominator	
1/1/2008 - 12/31/2008	Adult Program Results	\$12,572.9	37,970,278 3,020	\$11,830.7	59,117,773 4,997	\$10,200 (\$8,160)
	Dislocated Worker Program Results	\$13,466.0	20,118,174 1,494	\$13,119.7	37,666,794 2,871	\$13,000 (\$10,400)
	Natl Emergency Grant	\$14,291.9	300,129 21	\$13,533.2	2,341,244 173	

Performance was Calculated: 5/11/2010 3:33:01 PM

* Data suppressed for confidentiality purposes

State of Oregon - Department of Community Colleges and Workforce Development

Table O - Local Performance (Common Exit)

Program Year 2009 - 3rd Qtr (Year-to-Date)

Local Area Name: 00 - Statewide

		Served	Exited		
Total Participants	Adults	154,008	102,491		
	DW	107,144	56,857		
	Youth (14-21)	3,165	1,108		
		N	D	Actual	Negotiated (80%)
Entered Employment Rate	Adults	20,974	45,134	46.5 <i>M</i>	57.0 (45.6)
	DW	17,696	39,530	44.8 <i>N</i>	57.0 (45.6)
		N	D	Actual	Negotiated (80%)
Employment Retention Rate	Adults	4,676	5,919	79.0 <i>M</i>	81.0 (64.8)
	DW	2,513	3,241	77.5 <i>M</i>	81.0 (64.8)
		N	D	Actual	Negotiated (80%)
Average Earnings	Adults	55,366,401	4,664	11,871.0 <i>E</i>	10,200.0 (8,160.0)
	DW	32,544,904	2,507	12,981.6 <i>M</i>	13,000.0 (10,400.0)
		N	D	Actual	Negotiated (80%)
Placement in Employment or Education	Youth (14-21)	423	697	60.7 <i>M</i>	70.0 (56.0)
Attainment of a Degree or Certificate	Youth (14-21)	456	640	71.3 <i>E</i>	67.0 (53.6)
Literacy and Numeracy Gains	Youth (14-21)	148	453	32.7 <i>E</i>	30.0 (24.0)

<i>Not Met</i>	<i>Met</i>	<i>Exceeded</i>
1	5	3

State of Oregon - Department of Community Colleges and Workforce Development

Table O - Local Performance (Common Exit)

Program Year 2009 - 3rd Qtr (Year-to-Date)

Local Area Name: 02 - Worksystems Inc

		Served	Exited		
Total Participants	Adults	38,994	24,695		
	DW	35,960	22,497		
	Youth (14-21)	673	255		
		N	D	Actual	Negotiated (80%)
Entered Employment Rate	Adults	5,891	13,653	43.1 N	57.0 (45.6)
	DW	5,396	12,587	42.9 N	57.0 (45.6)
		N	D	Actual	Negotiated (80%)
Employment Retention Rate	Adults	835	1,068	78.2 M	81.0 (64.8)
	DW	650	838	77.6 M	81.0 (64.8)
		N	D	Actual	Negotiated (80%)
Average Earnings	Adults	12,046,683	828	14,549.1 E	10,200.0 (8,160.0)
	DW	10,347,799	649	15,944.2 E	13,000.0 (10,400.0)
		N	D	Actual	Negotiated (80%)
Placement in Employment or Education	Youth (14-21)	122	172	70.9 E	70.0 (56.0)
Attainment of a Degree or Certificate	Youth (14-21)	143	178	80.3 E	67.0 (53.6)
Literacy and Numeracy Gains	Youth (14-21)	57	113	50.4 E	30.0 (24.0)

Not Met	Met	Exceeded
2	2	5

State of Oregon - Department of Community Colleges and Workforce Development

Table O - Local Performance (Common Exit)

Program Year 2009 - 3rd Qtr (Year-to-Date)

Local Area Name: 03 - Enterprise for Employment & Education

		Served	Exited		
Total Participants	Adults	21,261	15,319		
	DW	10,832	4,828		
	Youth (14-21)	477	178		
		N	D	Actual	Negotiated (80%)
Entered Employment Rate	Adults	2,812	5,486	51.3 <i>M</i>	57.0 (45.6)
	DW	1,570	3,468	45.3 <i>N</i>	57.0 (45.6)
		N	D	Actual	Negotiated (80%)
Employment Retention Rate	Adults	1,352	1,805	74.9 <i>M</i>	81.0 (64.8)
	DW	375	531	70.6 <i>M</i>	81.0 (64.8)
		N	D	Actual	Negotiated (80%)
Average Earnings	Adults	13,718,274	1,348	10,176.8 <i>M</i>	10,200.0 (8,160.0)
	DW	3,669,237	372	9,863.5 <i>N</i>	13,000.0 (10,400.0)
		N	D	Actual	Negotiated (80%)
Placement in Employment or Education	Youth (14-21)	57	96	59.4 <i>M</i>	70.0 (56.0)
Attainment of a Degree or Certificate	Youth (14-21)	31	52	59.6 <i>M</i>	67.0 (53.6)
Literacy and Numeracy Gains	Youth (14-21)	22	110	20.0 <i>N</i>	30.0 (24.0)

<i>Not Met</i>	<i>Met</i>	<i>Exceeded</i>
3	6	0

State of Oregon - Department of Community Colleges and Workforce Development

Table O - Local Performance (Common Exit)

Program Year 2009 - 3rd Qtr (Year-to-Date)

Local Area Name: **04 - Community Service Consortium**

		Served	Exited		
Total Participants	Adults	14,976	8,600		
	DW	12,872	7,162		
	Youth (14-21)	329	58		
		N	D	Actual	Negotiated (80%)
Entered Employment Rate	Adults	1,991	4,254	46.8 <i>M</i>	57.0 (45.6)
	DW	1,821	3,892	46.8 <i>M</i>	57.0 (45.6)
		N	D	Actual	Negotiated (80%)
Employment Retention Rate	Adults	256	318	80.5 <i>M</i>	81.0 (64.8)
	DW	202	260	77.7 <i>M</i>	81.0 (64.8)
		N	D	Actual	Negotiated (80%)
Average Earnings	Adults	3,042,790	256	11,885.9 <i>E</i>	10,200.0 (8,160.0)
	DW	2,547,014	202	12,609.0 <i>M</i>	13,000.0 (10,400.0)
		N	D	Actual	Negotiated (80%)
Placement in Employment or Education	Youth (14-21)	27	53	50.9 <i>N</i>	70.0 (56.0)
Attainment of a Degree or Certificate	Youth (14-21)	25	46	54.3 <i>M</i>	67.0 (53.6)
Literacy and Numeracy Gains	Youth (14-21)	*	29	17.2 <i>N</i>	30.0 (24.0)

<i>Not Met</i>	<i>Met</i>	<i>Exceeded</i>
2	6	1

State of Oregon - Department of Community Colleges and Workforce Development

Table O - Local Performance (Common Exit)

Program Year 2009 - 3rd Qtr (Year-to-Date)

Local Area Name: 05 - Lane Workforce Partnership

		Served	Exited		
Total Participants	Adults	15,320	12,252		
	DW	8,649	4,407		
	Youth (14-21)	265	95		
		N	D	Actual	Negotiated (80%)
Entered Employment Rate	Adults	1,598	3,857	41.4 <i>N</i>	57.0 (45.6)
	DW	1,329	3,474	38.3 <i>N</i>	57.0 (45.6)
		N	D	Actual	Negotiated (80%)
Employment Retention Rate	Adults	282	342	82.5 <i>E</i>	81.0 (64.8)
	DW	185	229	80.8 <i>M</i>	81.0 (64.8)
		N	D	Actual	Negotiated (80%)
Average Earnings	Adults	3,435,552	282	12,182.8 <i>E</i>	10,200.0 (8,160.0)
	DW	2,290,561	185	12,381.4 <i>M</i>	13,000.0 (10,400.0)
		N	D	Actual	Negotiated (80%)
Placement in Employment or Education	Youth (14-21)	47	67	70.1 <i>E</i>	70.0 (56.0)
Attainment of a Degree or Certificate	Youth (14-21)	50	63	79.4 <i>E</i>	67.0 (53.6)
Literacy and Numeracy Gains	Youth (14-21)	16	31	51.6 <i>E</i>	30.0 (24.0)

<i>Not Met</i>	<i>Met</i>	<i>Exceeded</i>
2	2	5

State of Oregon - Department of Community Colleges and Workforce Development

Table O - Local Performance (Common Exit)

Program Year 2009 - 3rd Qtr (Year-to-Date)

Local Area Name: 08 - Rogue Valley Workforce Development Council

		Served	Exited		
Total Participants	Adults	10,325	6,022		
	DW	6,072	2,160		
	Youth (14-21)	255	41		
		N	D	Actual	Negotiated (80%)
Entered Employment Rate	Adults	990	2,158	45.9 <i>M</i>	57.0 (45.6)
	DW	919	2,159	42.6 <i>N</i>	57.0 (45.6)
		N	D	Actual	Negotiated (80%)
Employment Retention Rate	Adults	347	418	83.0 <i>E</i>	81.0 (64.8)
	DW	211	267	79.0 <i>M</i>	81.0 (64.8)
		N	D	Actual	Negotiated (80%)
Average Earnings	Adults	3,952,790	347	11,391.3 <i>E</i>	10,200.0 (8,160.0)
	DW	2,348,987	211	11,132.6 <i>M</i>	13,000.0 (10,400.0)
		N	D	Actual	Negotiated (80%)
Placement in Employment or Education	Youth (14-21)	19	30	63.3 <i>M</i>	70.0 (56.0)
Attainment of a Degree or Certificate	Youth (14-21)	13	21	61.9 <i>M</i>	67.0 (53.6)
Literacy and Numeracy Gains	Youth (14-21)	20	51	39.2 <i>E</i>	30.0 (24.0)

<i>Not Met</i>	<i>Met</i>	<i>Exceeded</i>
1	5	3

State of Oregon - Department of Community Colleges and Workforce Development

Table O - Local Performance (Common Exit)

Program Year 2009 - 3rd Qtr (Year-to-Date)

Local Area Name: 16 - Workforce Investment Council of Clackamas County

		Served	Exited		
Total Participants	Adults	10,601	6,426		
	DW	9,904	5,891		
	Youth (14-21)	316	152		
		N	D	Actual	Negotiated (80%)
Entered Employment Rate	Adults	1,683	3,786	44.5 N	57.0 (45.6)
	DW	1,568	3,564	44.0 N	57.0 (45.6)
		N	D	Actual	Negotiated (80%)
Employment Retention Rate	Adults	251	306	82.0 E	81.0 (64.8)
	DW	246	300	82.0 E	81.0 (64.8)
		N	D	Actual	Negotiated (80%)
Average Earnings	Adults	3,772,450	251	15,029.7 E	10,200.0 (8,160.0)
	DW	3,710,522	246	15,083.4 E	13,000.0 (10,400.0)
		N	D	Actual	Negotiated (80%)
Placement in Employment or Education	Youth (14-21)	42	99	42.4 N	70.0 (56.0)
Attainment of a Degree or Certificate	Youth (14-21)	63	97	64.9 M	67.0 (53.6)
Literacy and Numeracy Gains	Youth (14-21)	*	23	21.7 N	30.0 (24.0)

Not Met	Met	Exceeded
4	1	4

State of Oregon - Department of Community Colleges and Workforce Development

Table O - Local Performance (Common Exit)

Program Year 2009 - 3rd Qtr (Year-to-Date)

Local Area Name: 24 - The Oregon Consortium/Workforce Alliance

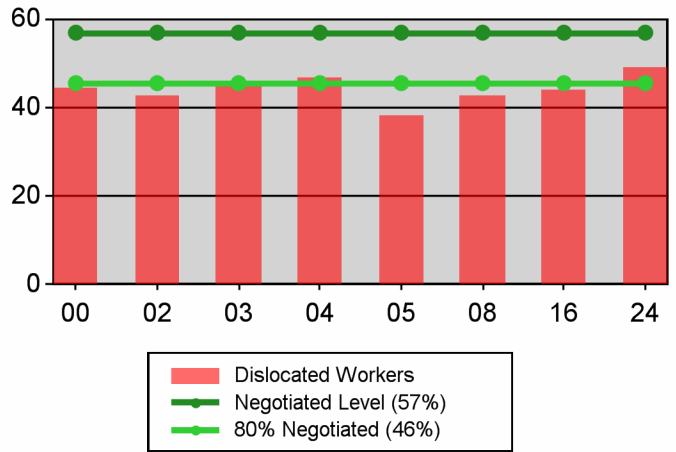
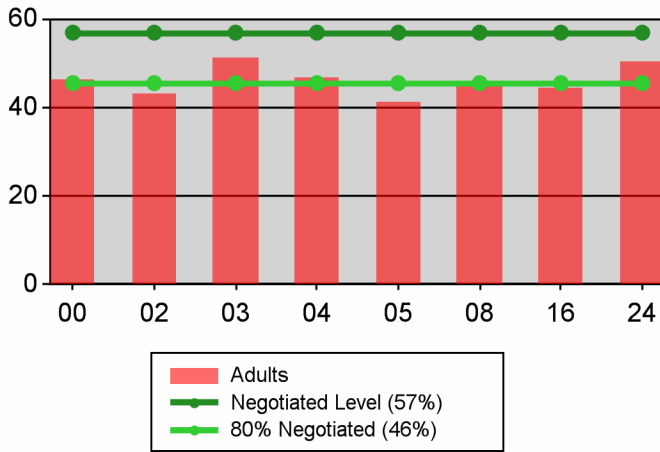
		Served	Exited		
Total Participants	Adults	42,531	29,177		
	DW	22,855	9,912		
	Youth (14-21)	850	329		
		N	D	Actual	Negotiated (80%)
Entered Employment Rate	Adults	6,009	11,940	50.3 <i>M</i>	57.0 (45.6)
	DW	5,093	10,386	49.0 <i>M</i>	57.0 (45.6)
		N	D	Actual	Negotiated (80%)
Employment Retention Rate	Adults	1,353	1,662	81.4 <i>E</i>	81.0 (64.8)
	DW	644	816	78.9 <i>M</i>	81.0 (64.8)
		N	D	Actual	Negotiated (80%)
Average Earnings	Adults	15,397,863	1,352	11,389.0 <i>E</i>	10,200.0 (8,160.0)
	DW	7,630,785	642	11,886.0 <i>M</i>	13,000.0 (10,400.0)
		N	D	Actual	Negotiated (80%)
Placement in Employment or Education	Youth (14-21)	109	180	60.6 <i>M</i>	70.0 (56.0)
Attainment of a Degree or Certificate	Youth (14-21)	131	183	71.6 <i>E</i>	67.0 (53.6)
Literacy and Numeracy Gains	Youth (14-21)	23	96	24.0 <i>M</i>	30.0 (24.0)

<i>Not Met</i>	<i>Met</i>	<i>Exceeded</i>
0	6	3

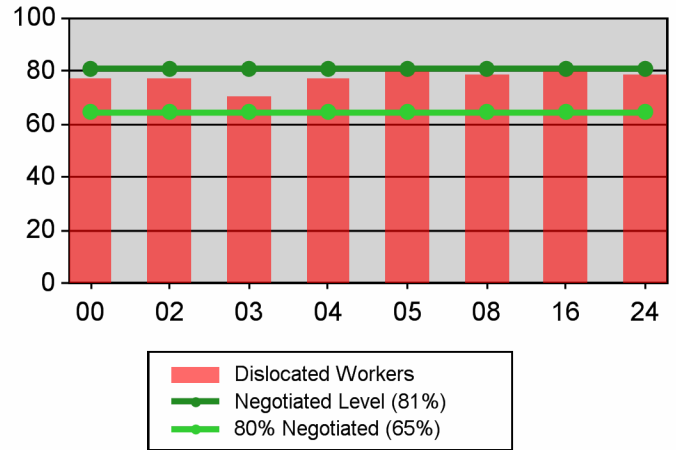
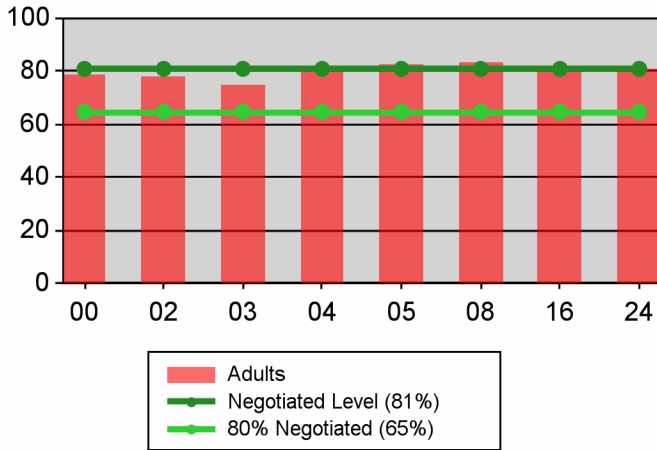
Table O - Local Performance (Common Exit)

Program Year 2009 - 3rd Qtr (Year-to-Date)

Entered Employment Rate



Retention Rate



Average Earnings

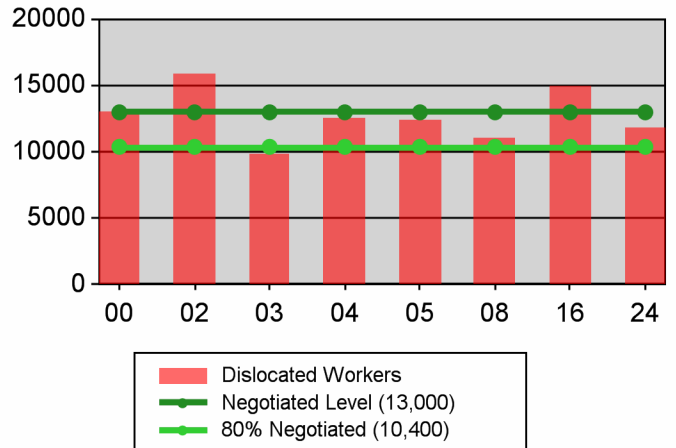
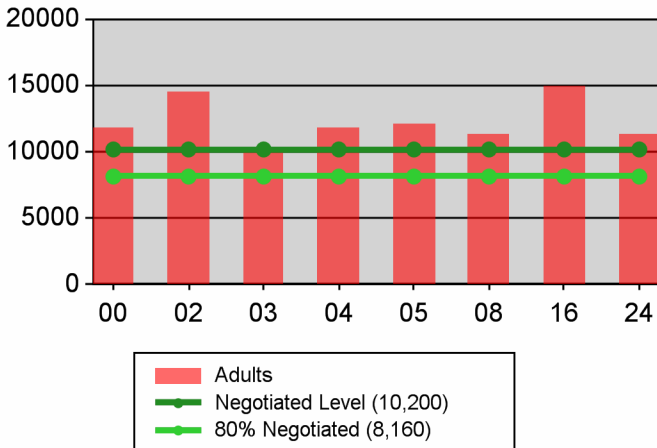
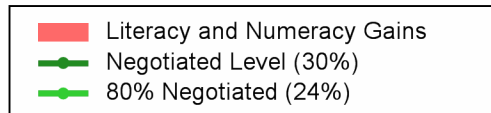
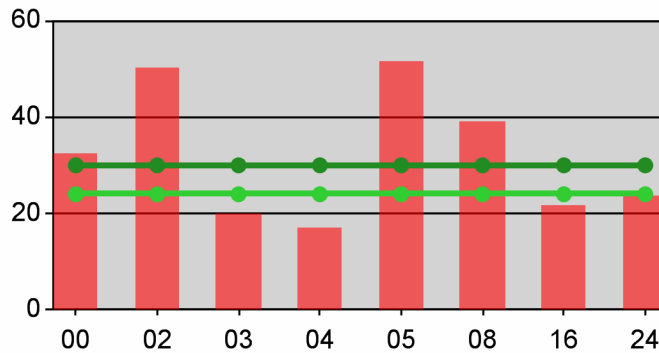
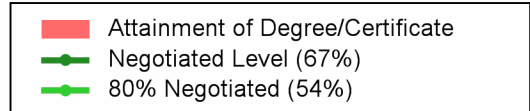
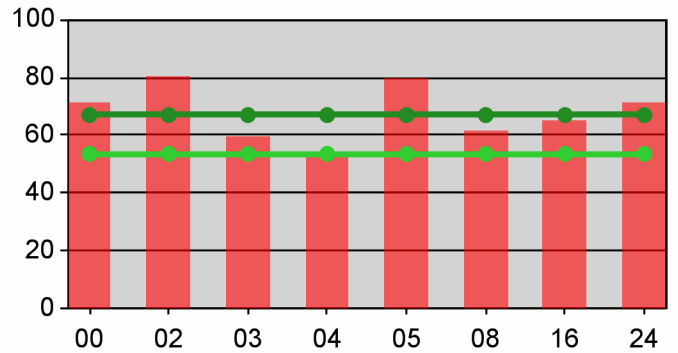
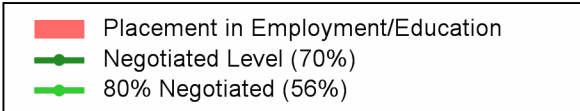
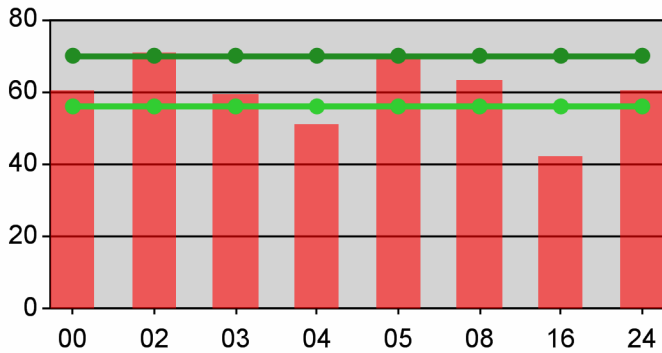


Table O - Local Performance (Common Exit)

Program Year 2009 - 3rd Qtr (Year-to-Date)

Youth



State of Oregon - Department of Community Colleges and Workforce Development

Table O - Local Performance (Common Exit)

Program Year 2009 - 3rd Qtr (Year-to-Date)

Local Area Name: 24 - The Oregon Consortium/Workforce Alliance

07/01/2009 - 03/31/2010		Served	Exited		
Total Participants	Adults	42,479	29,153		
	DW	22,772	9,884		
	Youth (14-21)	832	358		
10/01/2008 - 06/30/2009		N	D	Actual	Negotiated (80%)
Entered Employment Rate	Adults	6,006	11,929	50.3 <i>M</i>	57.0 (45.6)
	DW	5,087	10,373	49.0 <i>M</i>	57.0 (45.6)
	NEG	66	104	63.5	
04/01/2008 - 12/31/2008		N	D	Actual	Negotiated (80%)
Employment Retention Rate	Adults	1,349	1,656	81.5 <i>E</i>	81.0 (64.8)
	DW	627	794	79.0 <i>M</i>	81.0 (64.8)
	NEG	42	56	75.0	
04/01/2008 - 12/31/2008		N	D	Actual	Negotiated (80%)
Average Earnings	Adults	15,461,662	1,348	11,470.1 <i>E</i>	10,200.0 (8,160.0)
	DW	7,457,778	625	11,932.4 <i>M</i>	13,000.0 (10,400.0)
	NEG	475,297	42	11,316.6	
10/01/2008 - 06/30/2009		N	D	Actual	Negotiated (80%)
Placement in Employment or Education	Youth (14-21)	102	164	62.2 <i>M</i>	70.0 (56.0)
Attainment of a Degree or Certificate	Youth (14-21)	116	168	69.0 <i>E</i>	67.0 (53.6)
07/01/2009 - 03/31/2010		N	D	Actual	Negotiated (80%)
Literacy and Numeracy Gains	Youth (14-21)	23	93	24.7 <i>M</i>	30.0 (24.0)

<i>Not Met</i>	<i>Met</i>	<i>Exceeded</i>
0	6	3

State of Oregon - Department of Community Colleges and Workforce Development

Table O - Local Performance (Common Exit)

Program Year 2009 - 3rd Qtr (Year-to-Date)

Local Area Name: 240100 - Management Training Corp

07/01/2009 - 03/31/2010		Served	Exited		
Total Participants	Adults	4,866	3,155		
	DW	2,737	1,139		
	Youth (14-21)	140	77		
10/01/2008 - 06/30/2009		N	D	Actual	Negotiated (80%)
Entered Employment Rate	Adults	491	986	49.8 <i>M</i>	57.0 (45.6)
	DW	452	871	51.9 <i>M</i>	57.0 (45.6)
	NEG	37	54	68.5	
04/01/2008 - 12/31/2008		N	D	Actual	Negotiated (80%)
Employment Retention Rate	Adults	141	166	84.9 <i>E</i>	81.0 (64.8)
	DW	75	96	78.1 <i>M</i>	81.0 (64.8)
	NEG	17	26	65.4	
04/01/2008 - 12/31/2008		N	D	Actual	Negotiated (80%)
Average Earnings	Adults	1,504,275	141	10,668.6 <i>E</i>	10,200.0 (8,160.0)
	DW	918,999	75	12,253.3 <i>M</i>	13,000.0 (10,400.0)
	NEG	213,389	17	12,552.3	
10/01/2008 - 06/30/2009		N	D	Actual	Negotiated (80%)
Placement in Employment or Education	Youth (14-21)	17	35	48.6 <i>N</i>	70.0 (56.0)
Attainment of a Degree or Certificate	Youth (14-21)	13	27	48.1 <i>N</i>	67.0 (53.6)
07/01/2009 - 03/31/2010		N	D	Actual	Negotiated (80%)
Literacy and Numeracy Gains	Youth (14-21)	*	19	15.8 <i>N</i>	30.0 (24.0)

<i>Not Met</i>	<i>Met</i>	<i>Exceeded</i>
3	4	2

State of Oregon - Department of Community Colleges and Workforce Development

Table O - Local Performance (Common Exit)

Program Year 2009 - 3rd Qtr (Year-to-Date)

Local Area Name: 240600 - Umpqua Training & Employment

07/01/2009 - 03/31/2010		Served	Exited		
Total Participants	Adults	5,045	3,433		
	DW	2,816	1,296		
	Youth (14-21)	115	45		
10/01/2008 - 06/30/2009		N	D	Actual	Negotiated (80%)
Entered Employment Rate	Adults	589	1,428	41.2 <i>N</i>	57.0 (45.6)
	DW	682	1,559	43.7 <i>N</i>	57.0 (45.6)
	NEG	0	*	0.0	
04/01/2008 - 12/31/2008		N	D	Actual	Negotiated (80%)
Employment Retention Rate	Adults	132	163	81.0 <i>M</i>	81.0 (64.8)
	DW	69	89	77.5 <i>M</i>	81.0 (64.8)
	NEG	0	0		
04/01/2008 - 12/31/2008		N	D	Actual	Negotiated (80%)
Average Earnings	Adults	1,540,446	131	11,759.1 <i>E</i>	10,200.0 (8,160.0)
	DW	795,402	69	11,527.6 <i>M</i>	13,000.0 (10,400.0)
	NEG	0	0		
10/01/2008 - 06/30/2009		N	D	Actual	Negotiated (80%)
Placement in Employment or Education	Youth (14-21)	19	29	65.5 <i>M</i>	70.0 (56.0)
Attainment of a Degree or Certificate	Youth (14-21)	27	35	77.1 <i>E</i>	67.0 (53.6)
07/01/2009 - 03/31/2010		N	D	Actual	Negotiated (80%)
Literacy and Numeracy Gains	Youth (14-21)	*	22	22.7 <i>N</i>	30.0 (24.0)

<i>Not Met</i>	<i>Met</i>	<i>Exceeded</i>
3	4	2

State of Oregon - Department of Community Colleges and Workforce Development

Table O - Local Performance (Common Exit)

Program Year 2009 - 3rd Qtr (Year-to-Date)

Local Area Name: 240700 - South Coast Business Employment Corp.

07/01/2009 - 03/31/2010		Served	Exited		
Total Participants	Adults	3,830	2,747		
	DW	1,865	865		
	Youth (14-21)	95	38		
10/01/2008 - 06/30/2009		N	D	Actual	Negotiated (80%)
Entered Employment Rate	Adults	480	1,074	44.7 <i>N</i>	57.0 (45.6)
	DW	418	864	48.4 <i>M</i>	57.0 (45.6)
	NEG	0	0		
04/01/2008 - 12/31/2008		N	D	Actual	Negotiated (80%)
Employment Retention Rate	Adults	140	168	83.3 <i>E</i>	81.0 (64.8)
	DW	59	75	78.7 <i>M</i>	81.0 (64.8)
	NEG	0	0		
04/01/2008 - 12/31/2008		N	D	Actual	Negotiated (80%)
Average Earnings	Adults	1,618,187	140	11,558.5 <i>E</i>	10,200.0 (8,160.0)
	DW	654,645	59	11,095.7 <i>M</i>	13,000.0 (10,400.0)
	NEG	0	0		
10/01/2008 - 06/30/2009		N	D	Actual	Negotiated (80%)
Placement in Employment or Education	Youth (14-21)	13	18	72.2 <i>E</i>	70.0 (56.0)
Attainment of a Degree or Certificate	Youth (14-21)	22	27	81.5 <i>E</i>	67.0 (53.6)
07/01/2009 - 03/31/2010		N	D	Actual	Negotiated (80%)
Literacy and Numeracy Gains	Youth (14-21)	0	6	0.0 <i>N</i>	30.0 (24.0)

<i>Not Met</i>	<i>Met</i>	<i>Exceeded</i>
2	3	4

State of Oregon - Department of Community Colleges and Workforce Development

Table O - Local Performance (Common Exit)

Program Year 2009 - 3rd Qtr (Year-to-Date)

Local Area Name: 240900 - Mid-Columbia Council Of Governments

07/01/2009 - 03/31/2010		Served	Exited		
Total Participants	Adults	2,448	1,353		
	DW	1,361	439		
	Youth (14-21)	41	31		
10/01/2008 - 06/30/2009		N	D	Actual	Negotiated (80%)
Entered Employment Rate	Adults	330	579	57.0 <i>M</i>	57.0 (45.6)
	DW	220	381	57.7 <i>E</i>	57.0 (45.6)
	NEG	0	0		
04/01/2008 - 12/31/2008		N	D	Actual	Negotiated (80%)
Employment Retention Rate	Adults	42	48	87.5 <i>E</i>	81.0 (64.8)
	DW	20	26	76.9 <i>M</i>	81.0 (64.8)
	NEG	0	0		
04/01/2008 - 12/31/2008		N	D	Actual	Negotiated (80%)
Average Earnings	Adults	447,693	42	10,659.4 <i>E</i>	10,200.0 (8,160.0)
	DW	271,941	20	13,597.1 <i>E</i>	13,000.0 (10,400.0)
	NEG	0	0		
10/01/2008 - 06/30/2009		N	D	Actual	Negotiated (80%)
Placement in Employment or Education	Youth (14-21)	12	19	63.2 <i>M</i>	70.0 (56.0)
Attainment of a Degree or Certificate	Youth (14-21)	9	14	64.3 <i>M</i>	67.0 (53.6)
07/01/2009 - 03/31/2010		N	D	Actual	Negotiated (80%)
Literacy and Numeracy Gains	Youth (14-21)	0	*	0.0 <i>N</i>	30.0 (24.0)

<i>Not Met</i>	<i>Met</i>	<i>Exceeded</i>
1	4	4

State of Oregon - Department of Community Colleges and Workforce Development

Table O - Local Performance (Common Exit)

Program Year 2009 - 3rd Qtr (Year-to-Date)

Local Area Name: 241000 - Central Oregon Intergovernment Council

07/01/2009 - 03/31/2010		Served	Exited		
Total Participants	Adults	11,725	7,980		
	DW	6,449	2,883		
	Youth (14-21)	145	56		
10/01/2008 - 06/30/2009		N	D	Actual	Negotiated (80%)
Entered Employment Rate	Adults	1,683	3,526	47.7 <i>M</i>	57.0 (45.6)
	DW	1,523	3,373	45.2 <i>N</i>	57.0 (45.6)
	NEG	23	40	57.5	
04/01/2008 - 12/31/2008		N	D	Actual	Negotiated (80%)
Employment Retention Rate	Adults	360	434	82.9 <i>E</i>	81.0 (64.8)
	DW	166	218	76.1 <i>M</i>	81.0 (64.8)
	NEG	25	30	83.3	
04/01/2008 - 12/31/2008		N	D	Actual	Negotiated (80%)
Average Earnings	Adults	4,290,951	360	11,919.3 <i>E</i>	10,200.0 (8,160.0)
	DW	2,042,596	166	12,304.8 <i>M</i>	13,000.0 (10,400.0)
	NEG	261,908	25	10,476.3	
10/01/2008 - 06/30/2009		N	D	Actual	Negotiated (80%)
Placement in Employment or Education	Youth (14-21)	13	24	54.2 <i>N</i>	70.0 (56.0)
Attainment of a Degree or Certificate	Youth (14-21)	19	22	86.4 <i>E</i>	67.0 (53.6)
07/01/2009 - 03/31/2010		N	D	Actual	Negotiated (80%)
Literacy and Numeracy Gains	Youth (14-21)	*	6	33.3 <i>E</i>	30.0 (24.0)

<i>Not Met</i>	<i>Met</i>	<i>Exceeded</i>
2	3	4

State of Oregon - Department of Community Colleges and Workforce Development

Table O - Local Performance (Common Exit)

Program Year 2009 - 3rd Qtr (Year-to-Date)

Local Area Name: 241100 - Central OR Intergovt Council - Klamath & Lake

07/01/2009 - 03/31/2010		Served	Exited		
Total Participants	Adults	3,585	2,443		
	DW	1,910	781		
	Youth (14-21)	86	39		
10/01/2008 - 06/30/2009		N	D	Actual	Negotiated (80%)
Entered Employment Rate	Adults	385	802	48.0 <i>M</i>	57.0 (45.6)
	DW	253	625	40.5 <i>N</i>	57.0 (45.6)
	NEG	0	0		
04/01/2008 - 12/31/2008		N	D	Actual	Negotiated (80%)
Employment Retention Rate	Adults	84	123	68.3 <i>M</i>	81.0 (64.8)
	DW	24	28	85.7 <i>E</i>	81.0 (64.8)
	NEG	0	0		
04/01/2008 - 12/31/2008		N	D	Actual	Negotiated (80%)
Average Earnings	Adults	788,222	84	9,383.6 <i>M</i>	10,200.0 (8,160.0)
	DW	271,934	24	11,330.6 <i>M</i>	13,000.0 (10,400.0)
	NEG	0	0		
10/01/2008 - 06/30/2009		N	D	Actual	Negotiated (80%)
Placement in Employment or Education	Youth (14-21)	11	17	64.7 <i>M</i>	70.0 (56.0)
Attainment of a Degree or Certificate	Youth (14-21)	10	17	58.8 <i>M</i>	67.0 (53.6)
07/01/2009 - 03/31/2010		N	D	Actual	Negotiated (80%)
Literacy and Numeracy Gains	Youth (14-21)	*	9	22.2 <i>N</i>	30.0 (24.0)

<i>Not Met</i>	<i>Met</i>	<i>Exceeded</i>
2	6	1

State of Oregon - Department of Community Colleges and Workforce Development

Table O - Local Performance (Common Exit)

Program Year 2009 - 3rd Qtr (Year-to-Date)

Local Area Name: 241200 - Community Action Programs of East Central Oregon

07/01/2009 - 03/31/2010		Served	Exited		
Total Participants	Adults	5,195	3,808		
	DW	2,463	1,027		
	Youth (14-21)	110	27		
10/01/2008 - 06/30/2009		N	D	Actual	Negotiated (80%)
Entered Employment Rate	Adults	949	1,574	60.3 <i>E</i>	57.0 (45.6)
	DW	596	1,056	56.4 <i>M</i>	57.0 (45.6)
	NEG	*	6	66.7	
04/01/2008 - 12/31/2008		N	D	Actual	Negotiated (80%)
Employment Retention Rate	Adults	217	273	79.5 <i>M</i>	81.0 (64.8)
	DW	71	87	81.6 <i>E</i>	81.0 (64.8)
	NEG	0	0		
04/01/2008 - 12/31/2008		N	D	Actual	Negotiated (80%)
Average Earnings	Adults	2,855,813	217	13,160.4 <i>E</i>	10,200.0 (8,160.0)
	DW	773,487	71	10,894.2 <i>M</i>	13,000.0 (10,400.0)
	NEG	0	0		
10/01/2008 - 06/30/2009		N	D	Actual	Negotiated (80%)
Placement in Employment or Education	Youth (14-21)	*	8	62.5 <i>M</i>	70.0 (56.0)
Attainment of a Degree or Certificate	Youth (14-21)	7	12	58.3 <i>M</i>	67.0 (53.6)
07/01/2009 - 03/31/2010		N	D	Actual	Negotiated (80%)
Literacy and Numeracy Gains	Youth (14-21)	*	10	40.0 <i>E</i>	30.0 (24.0)

<i>Not Met</i>	<i>Met</i>	<i>Exceeded</i>
0	5	4

State of Oregon - Department of Community Colleges and Workforce Development

Table O - Local Performance (Common Exit)

Program Year 2009 - 3rd Qtr (Year-to-Date)

Local Area Name: 241300 - Training & Employment Consortium - R13

07/01/2009 - 03/31/2010		Served	Exited		
Total Participants	Adults	3,058	2,094		
	DW	1,777	745		
	Youth (14-21)	43	13		
10/01/2008 - 06/30/2009		N	D	Actual	Negotiated (80%)
Entered Employment Rate	Adults	575	968	59.4 <i>E</i>	57.0 (45.6)
	DW	453	741	61.1 <i>E</i>	57.0 (45.6)
	NEG	*	*	66.7	
04/01/2008 - 12/31/2008		N	D	Actual	Negotiated (80%)
Employment Retention Rate	Adults	108	128	84.4 <i>E</i>	81.0 (64.8)
	DW	51	63	81.0 <i>M</i>	81.0 (64.8)
	NEG	0	0		
04/01/2008 - 12/31/2008		N	D	Actual	Negotiated (80%)
Average Earnings	Adults	1,257,921	108	11,647.4 <i>E</i>	10,200.0 (8,160.0)
	DW	615,929	51	12,077.0 <i>M</i>	13,000.0 (10,400.0)
	NEG	0	0		
10/01/2008 - 06/30/2009		N	D	Actual	Negotiated (80%)
Placement in Employment or Education	Youth (14-21)	7	9	77.8 <i>E</i>	70.0 (56.0)
Attainment of a Degree or Certificate	Youth (14-21)	6	8	75.0 <i>E</i>	67.0 (53.6)
07/01/2009 - 03/31/2010		N	D	Actual	Negotiated (80%)
Literacy and Numeracy Gains	Youth (14-21)	*	6	83.3 <i>E</i>	30.0 (24.0)

<i>Not Met</i>	<i>Met</i>	<i>Exceeded</i>
0	2	7

State of Oregon - Department of Community Colleges and Workforce Development

Table O - Local Performance (Common Exit)

Program Year 2009 - 3rd Qtr (Year-to-Date)

Local Area Name: 241400 - Training & Employment Consortium - R14

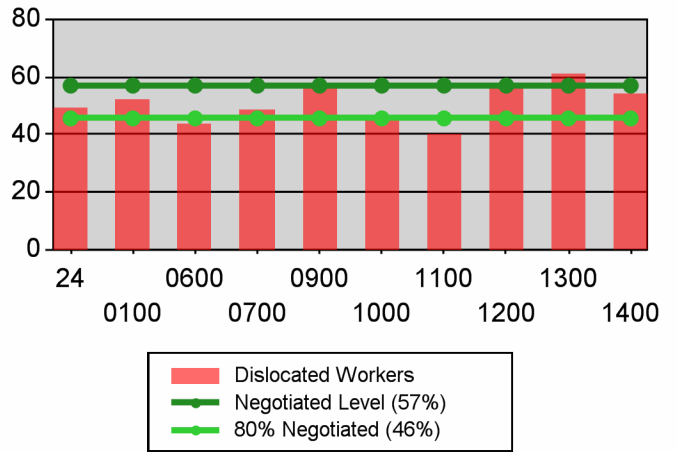
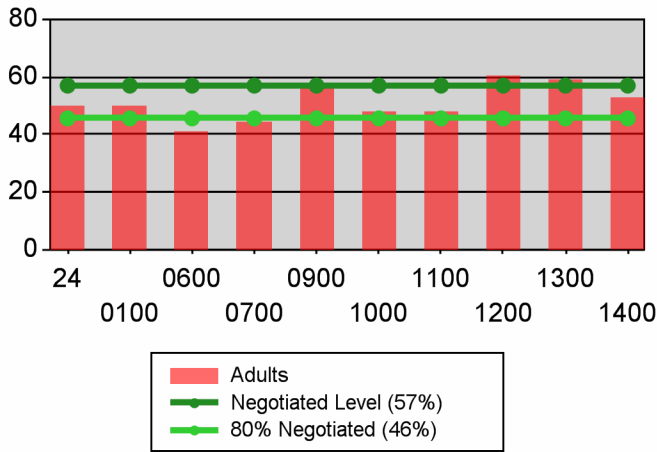
07/01/2009 - 03/31/2010		Served	Exited		
Total Participants	Adults	2,725	2,138		
	DW	1,394	709		
	Youth (14-21)	57	32		
10/01/2008 - 06/30/2009		N	D	Actual	Negotiated (80%)
Entered Employment Rate	Adults	524	992	52.8 <i>M</i>	57.0 (45.6)
	DW	490	903	54.3 <i>M</i>	57.0 (45.6)
	NEG	0	0		
04/01/2008 - 12/31/2008		N	D	Actual	Negotiated (80%)
Employment Retention Rate	Adults	125	153	81.7 <i>E</i>	81.0 (64.8)
	DW	92	112	82.1 <i>E</i>	81.0 (64.8)
	NEG	0	0		
04/01/2008 - 12/31/2008		N	D	Actual	Negotiated (80%)
Average Earnings	Adults	1,158,155	125	9,265.2 <i>M</i>	10,200.0 (8,160.0)
	DW	1,112,844	90	12,364.9 <i>M</i>	13,000.0 (10,400.0)
	NEG	0	0		
10/01/2008 - 06/30/2009		N	D	Actual	Negotiated (80%)
Placement in Employment or Education	Youth (14-21)	*	*	100.0 <i>E</i>	70.0 (56.0)
Attainment of a Degree or Certificate	Youth (14-21)	*	6	50.0 <i>N</i>	67.0 (53.6)
07/01/2009 - 03/31/2010		N	D	Actual	Negotiated (80%)
Literacy and Numeracy Gains	Youth (14-21)	*	10	20.0 <i>N</i>	30.0 (24.0)

<i>Not Met</i>	<i>Met</i>	<i>Exceeded</i>
2	4	3

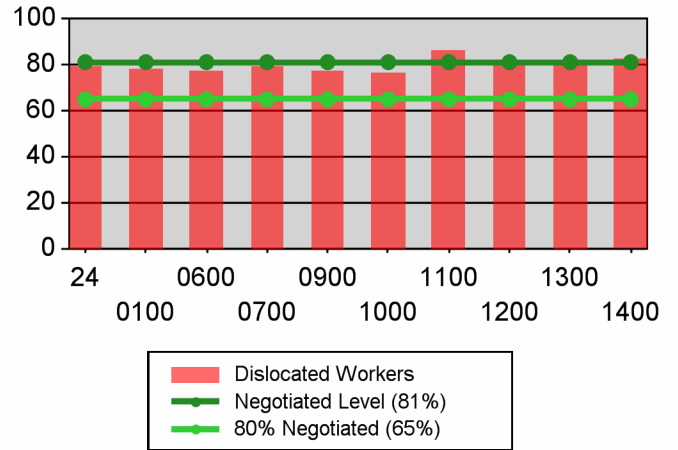
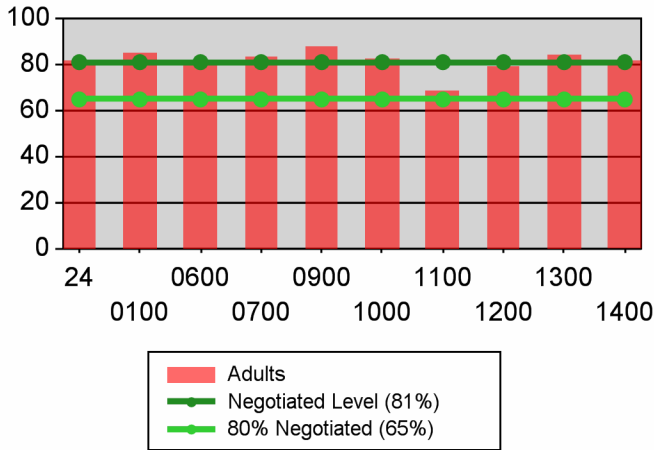
Table O - Local Performance (Common Exit)

Program Year 2009 - 3rd Qtr (Year-to-Date)

Entered Employment Rate



Retention Rate



Average Earnings

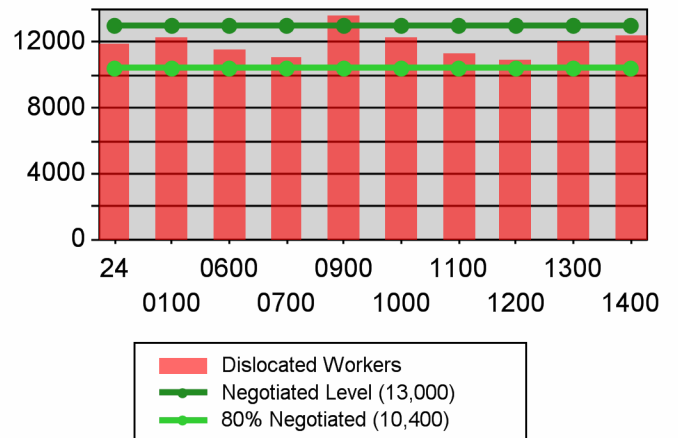
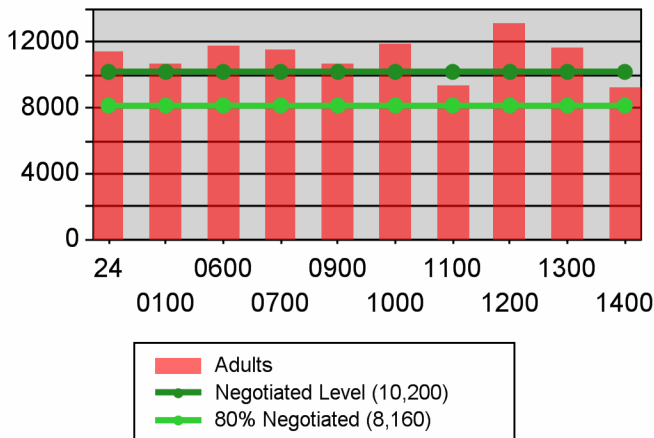


Table O - Local Performance (Common Exit)

Program Year 2009 - 3rd Qtr (Year-to-Date)

Youth

