

## WIA Quarterly Report (ETA Form 9090) - Common Exits

**Statewide  
PY 2009 Qtr-4**

Cumulative Time Period	Total Participants	Current Quarter (Most Recent)		Cumulative 4-Quarter Reporting Period	
		Value	Numerator Denominator	Value	Numerator Denominator
7/1/2009 - 6/30/2010	Total Adult Customers	79,917		204,129	
	Total Adult self-service only	50,218		205,053	
	WIA Adult	77,224		195,152	
	WIA Dislocated Worker	67,602		140,788	
	Natl Emergency Grant	3,824		4,428	
	Received Training Services	1,697		5,449	
	Received Training Services - Adults	1,499		4,775	
	Received Training Services - Dislocated Workers	1,455		4,540	
	Total Youth (14-21)	2,562		3,640	
	Younger Youth (14-18)	1,856		2,584	
	Older Youth (19-21)	706		1,056	
	Out-of-School Youth	1,232		1,862	
	In-School Youth	1,330		1,778	

Cumulative Time Period	Total Exiters	Current Quarter (Most Recent)		Cumulative 4-Quarter Reporting Period	
		Value	Numerator Denominator	Value	Numerator Denominator
4/1/2009 - 3/31/2010	Total Adult Customers	45,781		164,240	
	Total Adult self-service only	53,540		213,380	
	WIA Adult	45,407		147,833	
	WIA Dislocated Worker	38,468		93,005	
	Natl Emergency Grant	195		693	
	Received Training Services	0		1,847	
	Received Training Services - Adults	0		1,531	
	Received Training Services - Dislocated Workers	0		1,411	
	Total Youth (14-21)	269		1,506	
	Younger Youth (14-18)	175		1,067	
	Older Youth (19-21)	94		439	
	Out-of-School Youth	172		831	
	In-School Youth	97		675	

\* Data suppressed for confidentiality purposes

## WIA Quarterly Report (ETA Form 9090) - Common Exits

**Statewide  
PY 2009 Qtr-4**

Cumulative Time Period	WIA Youth (14-21)	Current Quarter (Most Recent)		Cumulative 4-Qtr Reporting Period		Neg Perf (80%)
		Value	Numerator Denominator	Value	Numerator Denominator	
10/1/2008 - 9/30/2009	Placement in Employment or Education	53.2%	209 393	60.5%	671 1,110	70.0% (56.0%)
10/1/2008 - 9/30/2009	Attainment of a Degree or Certificate	66.5%	232 349	69.0%	694 1,006	67.0% (53.6%)
7/1/2009 - 6/30/2010	Literacy and Numeracy Gains	24.3%	52 214	28.3%	189 669	30.0% (24.0%)

Cumulative Time Period	Entered Employment Rate	Current Quarter (Most Recent)		Cumulative 4-Qtr Reporting Period		Neg Perf (80%)
		Value	Numerator Denominator	Value	Numerator Denominator	
10/1/2008 - 9/30/2009	Adult Program Results	40.5%	11,735 28,949	43.3%	31,888 73,576	57.0% (45.6%)
	Dislocated Worker Program Results	43.3%	6,595 15,244	43.5%	23,426 53,859	57.0% (45.6%)
	Natl Emergency Grant	66.4%	95 143	67.8%	213 314	

Cumulative Time Period	Retention Rate	Current Quarter (Most Recent)		Cumulative 4-Qtr Reporting Period		Neg Perf (80%)
		Value	Numerator Denominator	Value	Numerator Denominator	
4/1/2008 - 3/31/2009	Adult Program Results	73.4%	8,537 11,623	75.4%	13,312 17,660	81.0% (64.8%)
	Dislocated Worker Program Results	70.9%	4,868 6,864	72.9%	7,324 10,049	81.0% (64.8%)
	Natl Emergency Grant	62.5%	25 40	75.5%	139 184	

Cumulative Time Period	Average Earnings	Current Quarter (Most Recent)		Cumulative 4-Qtr Reporting Period		Neg Perf (80%)
		Value	Numerator Denominator	Value	Numerator Denominator	
4/1/2008 - 3/31/2009	Adult Program Results	\$12,804.5	109,312,104 8,537	\$12,461.5	165,737,900 13,300	\$10,200 (\$8,160)
	Dislocated Worker Program Results	\$13,159.2	64,045,633 4,867	\$13,085.4	95,732,800 7,316	\$13,000 (\$10,400)
	Natl Emergency Grant	\$14,625.9	365,648 25	\$12,983.2	1,791,684 138	

Performance was Calculated: 8/13/2010 8:52:25 AM

\* Data suppressed for confidentiality purposes

8/13/2010 11:10:54 AM

Page 2 of 2

State of Oregon - Department of Community Colleges and Workforce Development

**Table O - Local Performance (Common Exit)**

Program Year 2009 - 4th Qtr (Year-to-Date)

Local Area Name: 00 - Statewide

07/01/2009 - 06/30/2010		Served	Exited		
<b>Total Participants</b>	Adults	195,152	147,833		
	DW	140,788	93,005		
	Youth (14-21)	3,640	1,506		
10/01/2008 - 09/30/2009		N	D	Actual	Negotiated (80%)
<b>Entered Employment Rate</b>	Adults	31,888	73,576	43.3 N	57.0 (45.6)
	DW	23,426	53,859	43.5 N	57.0 (45.6)
	NEG	213	314	67.8	
04/01/2008 - 03/31/2009		N	D	Actual	Negotiated (80%)
<b>Employment Retention Rate</b>	Adults	13,312	17,660	75.4 M	81.0 (64.8)
	DW	7,324	10,049	72.9 M	81.0 (64.8)
	NEG	139	184	75.5	
04/01/2008 - 03/31/2009		N	D	Actual	Negotiated (80%)
<b>Average Earnings</b>	Adults	165,737,900	13,300	12,461.5 E	10,200.0 (8,160.0)
	DW	95,732,800	7,316	13,085.4 E	13,000.0 (10,400.0)
	NEG	1,791,684	138	12,983.2	
10/01/2008 - 09/30/2009		N	D	Actual	Negotiated (80%)
<b>Placement in Employment or Education</b>	Youth (14-21)	671	1,110	60.5 M	70.0 (56.0)
<b>Attainment of a Degree or Certificate</b>	Youth (14-21)	694	1,006	69.0 E	67.0 (53.6)
07/01/2009 - 06/30/2010		N	D	Actual	Negotiated (80%)
<b>Literacy and Numeracy Gains</b>	Youth (14-21)	189	669	28.3 M	30.0 (24.0)

Not Met	Met	Exceeded
2	4	3

State of Oregon - Department of Community Colleges and Workforce Development

**Table O - Local Performance (Common Exit)**

Program Year 2009 - 4th Qtr (Year-to-Date)

**Local Area Name: 02 - Worksystems Inc**

07/01/2009 - 06/30/2010		Served	Exited		
<b>Total Participants</b>	Adults	47,059	32,348		
	DW	43,236	29,505		
	Youth (14-21)	733	329		
10/01/2008 - 09/30/2009		N	D	Actual	Negotiated (80%)
<b>Entered Employment Rate</b>	Adults	8,664	20,023	43.3 N	57.0 (45.6)
	DW	8,032	18,655	43.1 N	57.0 (45.6)
	NEG	0	0		
04/01/2008 - 03/31/2009		N	D	Actual	Negotiated (80%)
<b>Employment Retention Rate</b>	Adults	2,599	3,492	74.4 M	81.0 (64.8)
	DW	2,061	2,833	72.7 M	81.0 (64.8)
	NEG	0	0		
04/01/2008 - 03/31/2009		N	D	Actual	Negotiated (80%)
<b>Average Earnings</b>	Adults	38,557,088	2,593	14,869.7 E	10,200.0 (8,160.0)
	DW	32,246,165	2,059	15,661.1 E	13,000.0 (10,400.0)
	NEG	0	0		
10/01/2008 - 09/30/2009		N	D	Actual	Negotiated (80%)
<b>Placement in Employment or Education</b>	Youth (14-21)	186	235	79.1 E	70.0 (56.0)
<b>Attainment of a Degree or Certificate</b>	Youth (14-21)	185	239	77.4 E	67.0 (53.6)
07/01/2009 - 06/30/2010		N	D	Actual	Negotiated (80%)
<b>Literacy and Numeracy Gains</b>	Youth (14-21)	67	160	41.9 E	30.0 (24.0)

Not Met	Met	Exceeded
2	2	5

State of Oregon - Department of Community Colleges and Workforce Development

**Table O - Local Performance (Common Exit)**

Program Year 2009 - 4th Qtr (Year-to-Date)

**Local Area Name: 03 - Job Growers Incorporated**

07/01/2009 - 06/30/2010		Served	Exited		
<b>Total Participants</b>	Adults	28,654	23,108		
	DW	16,591	10,565		
	Youth (14-21)	526	228		
10/01/2008 - 09/30/2009		N	D	Actual	Negotiated (80%)
<b>Entered Employment Rate</b>	Adults	4,696	10,663	44.0 N	57.0 (45.6)
	DW	2,120	5,068	41.8 N	57.0 (45.6)
	NEG	39	49	79.6	
04/01/2008 - 03/31/2009		N	D	Actual	Negotiated (80%)
<b>Employment Retention Rate</b>	Adults	2,725	3,633	75.0 M	81.0 (64.8)
	DW	769	1,110	69.3 M	81.0 (64.8)
	NEG	38	49	77.6	
04/01/2008 - 03/31/2009		N	D	Actual	Negotiated (80%)
<b>Average Earnings</b>	Adults	30,386,855	2,721	11,167.5 E	10,200.0 (8,160.0)
	DW	7,884,757	766	10,293.4 N	13,000.0 (10,400.0)
	NEG	506,773	37	13,696.6	
10/01/2008 - 09/30/2009		N	D	Actual	Negotiated (80%)
<b>Placement in Employment or Education</b>	Youth (14-21)	92	159	57.9 M	70.0 (56.0)
<b>Attainment of a Degree or Certificate</b>	Youth (14-21)	67	93	72.0 E	67.0 (53.6)
07/01/2009 - 06/30/2010		N	D	Actual	Negotiated (80%)
<b>Literacy and Numeracy Gains</b>	Youth (14-21)	16	148	10.8 N	30.0 (24.0)

Not Met	Met	Exceeded
4	3	2

State of Oregon - Department of Community Colleges and Workforce Development

**Table O - Local Performance (Common Exit)**

Program Year 2009 - 4th Qtr (Year-to-Date)

**Local Area Name: 04 - Community Service Consortium**

07/01/2009 - 06/30/2010		Served	Exited		
<b>Total Participants</b>	Adults	16,787	10,175		
	DW	14,504	8,667		
	Youth (14-21)	377	73		
10/01/2008 - 09/30/2009		N	D	Actual	Negotiated (80%)
<b>Entered Employment Rate</b>	Adults	1,841	4,056	45.4 N	57.0 (45.6)
	DW	1,701	3,753	45.3 N	57.0 (45.6)
	NEG	21	35	60.0	
04/01/2008 - 03/31/2009		N	D	Actual	Negotiated (80%)
<b>Employment Retention Rate</b>	Adults	490	636	77.0 M	81.0 (64.8)
	DW	411	532	77.3 M	81.0 (64.8)
	NEG	37	44	84.1	
04/01/2008 - 03/31/2009		N	D	Actual	Negotiated (80%)
<b>Average Earnings</b>	Adults	6,617,318	490	13,504.7 E	10,200.0 (8,160.0)
	DW	5,455,561	411	13,273.9 E	13,000.0 (10,400.0)
	NEG	523,851	37	14,158.1	
10/01/2008 - 09/30/2009		N	D	Actual	Negotiated (80%)
<b>Placement in Employment or Education</b>	Youth (14-21)	33	65	50.8 N	70.0 (56.0)
<b>Attainment of a Degree or Certificate</b>	Youth (14-21)	29	55	52.7 N	67.0 (53.6)
07/01/2009 - 06/30/2010		N	D	Actual	Negotiated (80%)
<b>Literacy and Numeracy Gains</b>	Youth (14-21)	9	62	14.5 N	30.0 (24.0)

Not Met	Met	Exceeded
5	2	2

State of Oregon - Department of Community Colleges and Workforce Development

**Table O - Local Performance (Common Exit)**

Program Year 2009 - 4th Qtr (Year-to-Date)

**Local Area Name: 05 - Lane Workforce Partnership**

07/01/2009 - 06/30/2010		Served	Exited		
<b>Total Participants</b>	Adults	21,418	18,966		
	DW	13,446	9,403		
	Youth (14-21)	320	130		
10/01/2008 - 09/30/2009		N	D	Actual	Negotiated (80%)
<b>Entered Employment Rate</b>	Adults	2,905	7,803	37.2 <i>N</i>	57.0 (45.6)
	DW	1,849	5,023	36.8 <i>N</i>	57.0 (45.6)
	NEG	*	*	20.0	
04/01/2008 - 03/31/2009		N	D	Actual	Negotiated (80%)
<b>Employment Retention Rate</b>	Adults	878	1,138	77.2 <i>M</i>	81.0 (64.8)
	DW	402	555	72.4 <i>M</i>	81.0 (64.8)
	NEG	0	0		
04/01/2008 - 03/31/2009		N	D	Actual	Negotiated (80%)
<b>Average Earnings</b>	Adults	10,675,245	878	12,158.6 <i>E</i>	10,200.0 (8,160.0)
	DW	4,834,422	402	12,025.9 <i>M</i>	13,000.0 (10,400.0)
	NEG	0	0		
10/01/2008 - 09/30/2009		N	D	Actual	Negotiated (80%)
<b>Placement in Employment or Education</b>	Youth (14-21)	67	101	66.3 <i>M</i>	70.0 (56.0)
<b>Attainment of a Degree or Certificate</b>	Youth (14-21)	71	95	74.7 <i>E</i>	67.0 (53.6)
07/01/2009 - 06/30/2010		N	D	Actual	Negotiated (80%)
<b>Literacy and Numeracy Gains</b>	Youth (14-21)	21	38	55.3 <i>E</i>	30.0 (24.0)

<i>Not Met</i>	<i>Met</i>	<i>Exceeded</i>
2	4	3

State of Oregon - Department of Community Colleges and Workforce Development

**Table O - Local Performance (Common Exit)**

Program Year 2009 - 4th Qtr (Year-to-Date)

**Local Area Name: 08 - The Job Council**

07/01/2009 - 06/30/2010		Served	Exited		
<b>Total Participants</b>	Adults	13,601	9,892		
	DW	8,901	5,384		
	Youth (14-21)	307	85		
10/01/2008 - 09/30/2009		N	D	Actual	Negotiated (80%)
<b>Entered Employment Rate</b>	Adults	1,862	4,445	41.9 N	57.0 (45.6)
	DW	1,209	2,992	40.4 N	57.0 (45.6)
	NEG	0	0		
04/01/2008 - 03/31/2009		N	D	Actual	Negotiated (80%)
<b>Employment Retention Rate</b>	Adults	897	1,157	77.5 M	81.0 (64.8)
	DW	516	693	74.5 M	81.0 (64.8)
	NEG	0	0		
04/01/2008 - 03/31/2009		N	D	Actual	Negotiated (80%)
<b>Average Earnings</b>	Adults	10,004,642	897	11,153.4 E	10,200.0 (8,160.0)
	DW	5,433,421	516	10,529.9 M	13,000.0 (10,400.0)
	NEG	0	0		
10/01/2008 - 09/30/2009		N	D	Actual	Negotiated (80%)
<b>Placement in Employment or Education</b>	Youth (14-21)	36	60	60.0 M	70.0 (56.0)
<b>Attainment of a Degree or Certificate</b>	Youth (14-21)	25	39	64.1 M	67.0 (53.6)
07/01/2009 - 06/30/2010		N	D	Actual	Negotiated (80%)
<b>Literacy and Numeracy Gains</b>	Youth (14-21)	29	73	39.7 E	30.0 (24.0)

Not Met	Met	Exceeded
2	5	2



State of Oregon - Department of Community Colleges and Workforce Development

**Table O - Local Performance (Common Exit)**

Program Year 2009 - 4th Qtr (Year-to-Date)

**Local Area Name: 16 - Workforce Investment Council of Clackamas County**

07/01/2009 - 06/30/2010		Served	Exited		
<b>Total Participants</b>	Adults	12,453	8,237		
	DW	11,631	7,629		
	Youth (14-21)	386	202		
10/01/2008 - 09/30/2009		N	D	Actual	Negotiated (80%)
<b>Entered Employment Rate</b>	Adults	2,289	5,136	44.6 N	57.0 (45.6)
	DW	2,160	4,879	44.3 N	57.0 (45.6)
	NEG	0	0		
04/01/2008 - 03/31/2009		N	D	Actual	Negotiated (80%)
<b>Employment Retention Rate</b>	Adults	712	921	77.3 M	81.0 (64.8)
	DW	621	801	77.5 M	81.0 (64.8)
	NEG	0	0		
04/01/2008 - 03/31/2009		N	D	Actual	Negotiated (80%)
<b>Average Earnings</b>	Adults	11,077,767	712	15,558.7 E	10,200.0 (8,160.0)
	DW	9,690,168	621	15,604.1 E	13,000.0 (10,400.0)
	NEG	0	0		
10/01/2008 - 09/30/2009		N	D	Actual	Negotiated (80%)
<b>Placement in Employment or Education</b>	Youth (14-21)	65	136	47.8 N	70.0 (56.0)
<b>Attainment of a Degree or Certificate</b>	Youth (14-21)	87	128	68.0 E	67.0 (53.6)
07/01/2009 - 06/30/2010		N	D	Actual	Negotiated (80%)
<b>Literacy and Numeracy Gains</b>	Youth (14-21)	11	40	27.5 M	30.0 (24.0)

Not Met	Met	Exceeded
3	3	3

State of Oregon - Department of Community Colleges and Workforce Development

**Table O - Local Performance (Common Exit)**

Program Year 2009 - 4th Qtr (Year-to-Date)

**Local Area Name: 24 - The Oregon Consortium/Workforce Alliance**

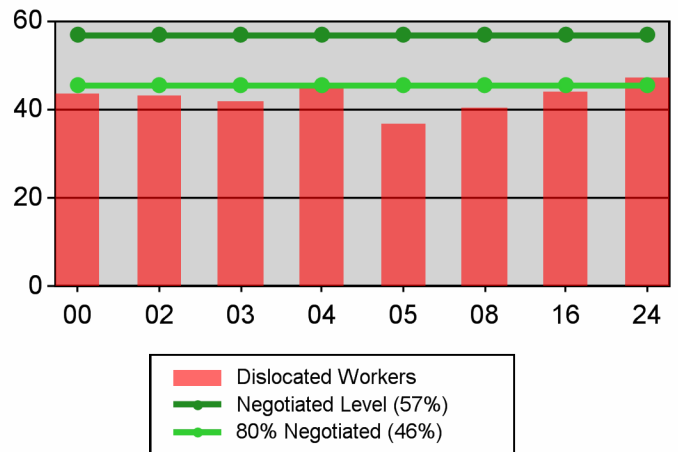
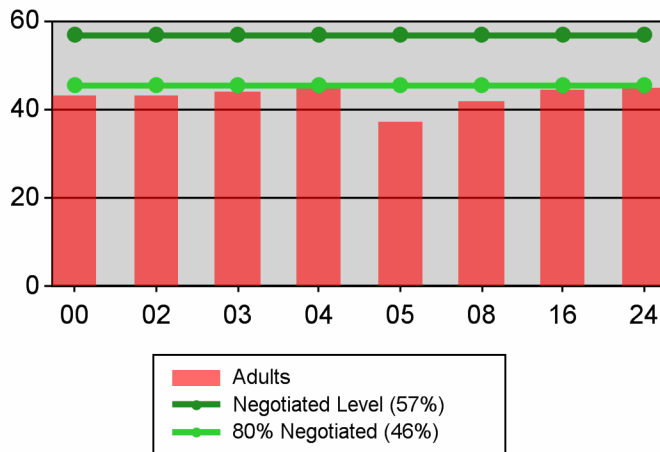
07/01/2009 - 06/30/2010		Served	Exited		
<b>Total Participants</b>	Adults	55,180	45,107		
	DW	32,479	21,852		
	Youth (14-21)	991	459		
10/01/2008 - 09/30/2009		N	D	Actual	Negotiated (80%)
<b>Entered Employment Rate</b>	Adults	9,631	21,450	44.9 <i>N</i>	57.0 (45.6)
	DW	6,355	13,489	47.1 <i>M</i>	57.0 (45.6)
	NEG	152	225	67.6	
04/01/2008 - 03/31/2009		N	D	Actual	Negotiated (80%)
<b>Employment Retention Rate</b>	Adults	5,011	6,683	75.0 <i>M</i>	81.0 (64.8)
	DW	2,544	3,525	72.2 <i>M</i>	81.0 (64.8)
	NEG	64	91	70.3	
04/01/2008 - 03/31/2009		N	D	Actual	Negotiated (80%)
<b>Average Earnings</b>	Adults	58,418,985	5,009	11,662.8 <i>E</i>	10,200.0 (8,160.0)
	DW	30,188,305	2,541	11,880.5 <i>M</i>	13,000.0 (10,400.0)
	NEG	761,059	64	11,891.5	
10/01/2008 - 09/30/2009		N	D	Actual	Negotiated (80%)
<b>Placement in Employment or Education</b>	Youth (14-21)	192	354	54.2 <i>N</i>	70.0 (56.0)
<b>Attainment of a Degree or Certificate</b>	Youth (14-21)	230	357	64.4 <i>M</i>	67.0 (53.6)
07/01/2009 - 06/30/2010		N	D	Actual	Negotiated (80%)
<b>Literacy and Numeracy Gains</b>	Youth (14-21)	36	148	24.3 <i>M</i>	30.0 (24.0)

<i>Not Met</i>	<i>Met</i>	<i>Exceeded</i>
2	6	1

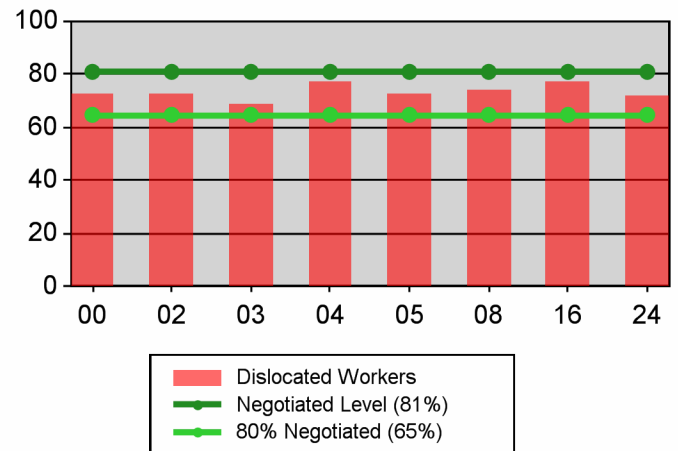
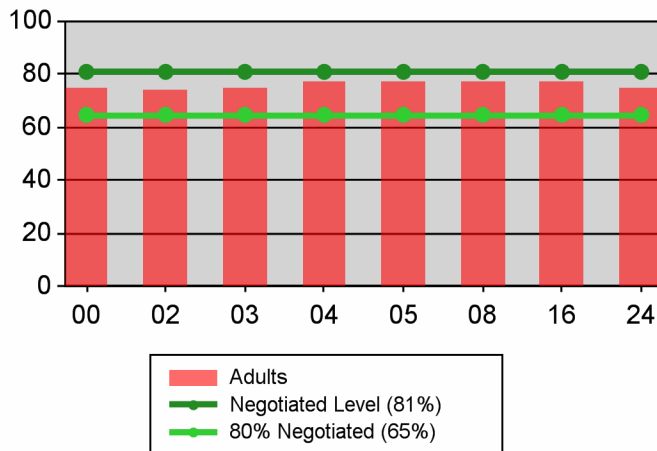
**Table O - Local Performance (Common Exit)**

Program Year 2009 - 4th Qtr (Year-to-Date)

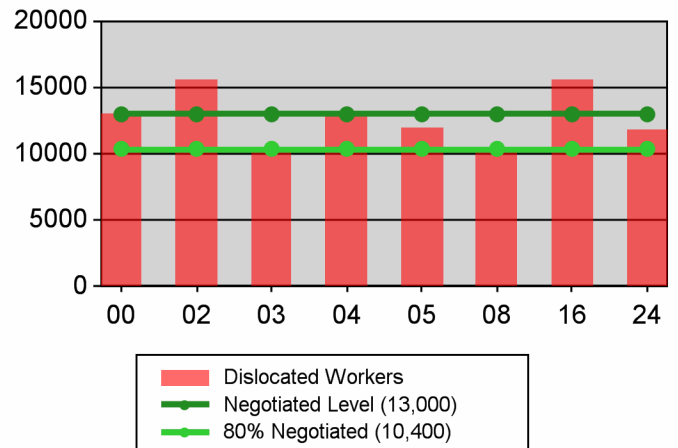
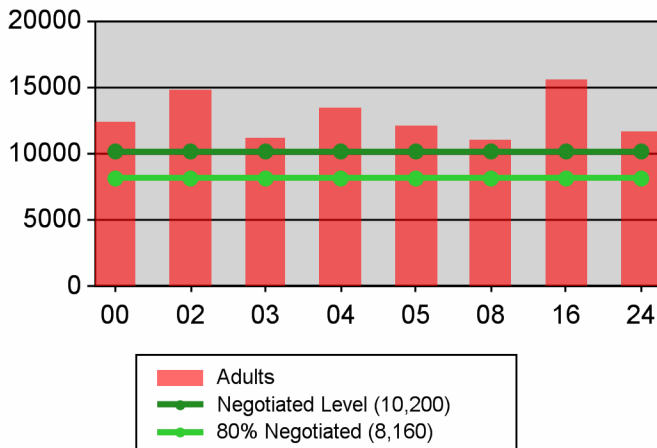
**Entered Employment Rate**



**Retention Rate**



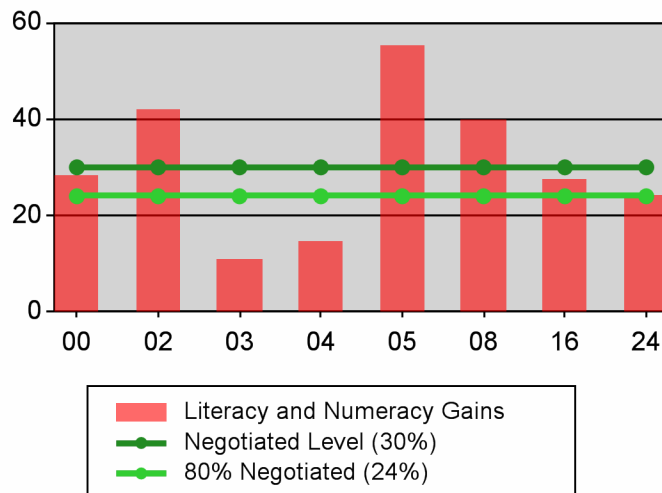
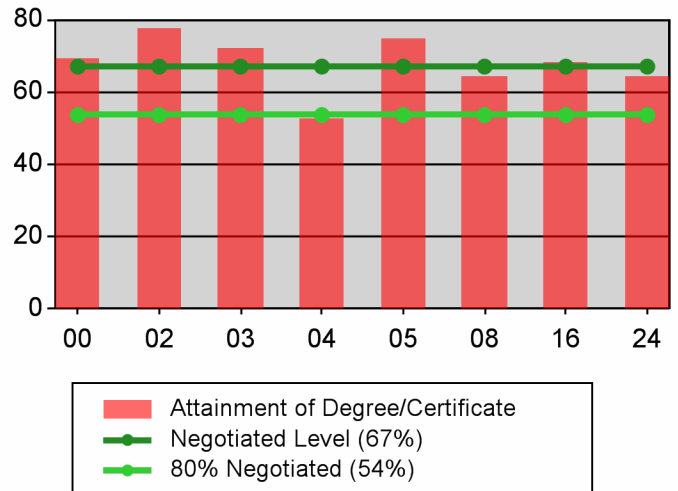
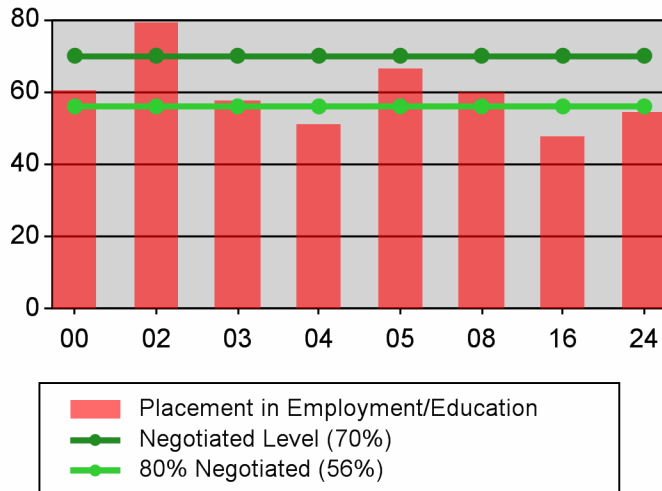
**Average Earnings**



**Table O - Local Performance (Common Exit)**

Program Year 2009 - 4th Qtr (Year-to-Date)

**Youth**



State of Oregon - Department of Community Colleges and Workforce Development

**Table O - Local Performance (Common Exit)**

Program Year 2009 - 4th Qtr (Year-to-Date)

**Local Area Name: 24 - The Oregon Consortium/Workforce Alliance**

07/01/2009 - 06/30/2010		Served	Exited		
<b>Total Participants</b>	Adults	55,338	45,163		
	DW	32,625	21,890		
	Youth (14-21)	962	424		
10/01/2008 - 09/30/2009		N	D	Actual	Negotiated (80%)
<b>Entered Employment Rate</b>	Adults	9,630	21,489	44.8 <i>N</i>	57.0 (45.6)
	DW	6,351	13,495	47.1 <i>M</i>	57.0 (45.6)
	NEG	152	225	67.6	
04/01/2008 - 03/31/2009		N	D	Actual	Negotiated (80%)
<b>Employment Retention Rate</b>	Adults	5,011	6,683	75.0 <i>M</i>	81.0 (64.8)
	DW	2,544	3,525	72.2 <i>M</i>	81.0 (64.8)
	NEG	64	91	70.3	
04/01/2008 - 03/31/2009		N	D	Actual	Negotiated (80%)
<b>Average Earnings</b>	Adults	59,796,497	5,009	11,937.8 <i>E</i>	10,200.0 (8,160.0)
	DW	31,723,142	2,541	12,484.5 <i>M</i>	13,000.0 (10,400.0)
	NEG	785,605	64	12,275.1	
10/01/2008 - 09/30/2009		N	D	Actual	Negotiated (80%)
<b>Placement in Employment or Education</b>	Youth (14-21)	191	324	59.0 <i>M</i>	70.0 (56.0)
<b>Attainment of a Degree or Certificate</b>	Youth (14-21)	236	334	70.7 <i>E</i>	67.0 (53.6)
07/01/2009 - 06/30/2010		N	D	Actual	Negotiated (80%)
<b>Literacy and Numeracy Gains</b>	Youth (14-21)	34	135	25.2 <i>M</i>	30.0 (24.0)

<i>Not Met</i>	<i>Met</i>	<i>Exceeded</i>
1	6	2

State of Oregon - Department of Community Colleges and Workforce Development

**Table O - Local Performance (Common Exit)**

Program Year 2009 - 4th Qtr (Year-to-Date)

**Local Area Name: 240100 - Management Training Corp**

07/01/2009 - 06/30/2010		Served	Exited		
<b>Total Participants</b>	Adults	6,843	5,228		
	DW	4,256	2,680		
	Youth (14-21)	131	49		
10/01/2008 - 09/30/2009		N	D	Actual	Negotiated (80%)
<b>Entered Employment Rate</b>	Adults	859	2,051	41.9 <i>N</i>	57.0 (45.6)
	DW	656	1,291	50.8 <i>M</i>	57.0 (45.6)
	NEG	44	66	66.7	
04/01/2008 - 03/31/2009		N	D	Actual	Negotiated (80%)
<b>Employment Retention Rate</b>	Adults	439	586	74.9 <i>M</i>	81.0 (64.8)
	DW	218	326	66.9 <i>M</i>	81.0 (64.8)
	NEG	26	44	59.1	
04/01/2008 - 03/31/2009		N	D	Actual	Negotiated (80%)
<b>Average Earnings</b>	Adults	4,802,955	439	10,940.7 <i>E</i>	10,200.0 (8,160.0)
	DW	2,572,742	218	11,801.6 <i>M</i>	13,000.0 (10,400.0)
	NEG	357,132	26	13,735.8	
10/01/2008 - 09/30/2009		N	D	Actual	Negotiated (80%)
<b>Placement in Employment or Education</b>	Youth (14-21)	30	53	56.6 <i>M</i>	70.0 (56.0)
<b>Attainment of a Degree or Certificate</b>	Youth (14-21)	31	48	64.6 <i>M</i>	67.0 (53.6)
07/01/2009 - 06/30/2010		N	D	Actual	Negotiated (80%)
<b>Literacy and Numeracy Gains</b>	Youth (14-21)	6	37	16.2 <i>N</i>	30.0 (24.0)

<i>Not Met</i>	<i>Met</i>	<i>Exceeded</i>
2	6	1

State of Oregon - Department of Community Colleges and Workforce Development

**Table O - Local Performance (Common Exit)**

Program Year 2009 - 4th Qtr (Year-to-Date)

**Local Area Name: 240600 - Umpqua Training & Employment**

07/01/2009 - 06/30/2010		Served	Exited		
<b>Total Participants</b>	Adults	6,296	5,221		
	DW	3,800	2,691		
	Youth (14-21)	133	57		
10/01/2008 - 09/30/2009		N	D	Actual	Negotiated (80%)
<b>Entered Employment Rate</b>	Adults	957	2,549	37.5 N	57.0 (45.6)
	DW	853	1,957	43.6 N	57.0 (45.6)
	NEG	*	*	25.0	
04/01/2008 - 03/31/2009		N	D	Actual	Negotiated (80%)
<b>Employment Retention Rate</b>	Adults	557	739	75.4 M	81.0 (64.8)
	DW	349	465	75.1 M	81.0 (64.8)
	NEG	0	0		
04/01/2008 - 03/31/2009		N	D	Actual	Negotiated (80%)
<b>Average Earnings</b>	Adults	6,474,603	556	11,645.0 E	10,200.0 (8,160.0)
	DW	4,157,886	349	11,913.7 M	13,000.0 (10,400.0)
	NEG	0	0		
10/01/2008 - 09/30/2009		N	D	Actual	Negotiated (80%)
<b>Placement in Employment or Education</b>	Youth (14-21)	27	44	61.4 M	70.0 (56.0)
<b>Attainment of a Degree or Certificate</b>	Youth (14-21)	40	55	72.7 E	67.0 (53.6)
07/01/2009 - 06/30/2010		N	D	Actual	Negotiated (80%)
<b>Literacy and Numeracy Gains</b>	Youth (14-21)	*	30	16.7 N	30.0 (24.0)

Not Met	Met	Exceeded
3	4	2

State of Oregon - Department of Community Colleges and Workforce Development

**Table O - Local Performance (Common Exit)**

Program Year 2009 - 4th Qtr (Year-to-Date)

**Local Area Name: 240700 - South Coast Business Employment Corp.**

07/01/2009 - 06/30/2010		Served	Exited		
<b>Total Participants</b>	Adults	5,252	4,029		
	DW	3,000	1,845		
	Youth (14-21)	98	52		
10/01/2008 - 09/30/2009		N	D	Actual	Negotiated (80%)
<b>Entered Employment Rate</b>	Adults	836	1,946	43.0 N	57.0 (45.6)
	DW	525	1,097	47.9 M	57.0 (45.6)
	NEG	0	0		
04/01/2008 - 03/31/2009		N	D	Actual	Negotiated (80%)
<b>Employment Retention Rate</b>	Adults	420	561	74.9 M	81.0 (64.8)
	DW	178	260	68.5 M	81.0 (64.8)
	NEG	0	0		
04/01/2008 - 03/31/2009		N	D	Actual	Negotiated (80%)
<b>Average Earnings</b>	Adults	4,692,491	420	11,172.6 E	10,200.0 (8,160.0)
	DW	1,679,499	178	9,435.4 N	13,000.0 (10,400.0)
	NEG	0	0		
10/01/2008 - 09/30/2009		N	D	Actual	Negotiated (80%)
<b>Placement in Employment or Education</b>	Youth (14-21)	24	30	80.0 E	70.0 (56.0)
<b>Attainment of a Degree or Certificate</b>	Youth (14-21)	27	38	71.1 E	67.0 (53.6)
07/01/2009 - 06/30/2010		N	D	Actual	Negotiated (80%)
<b>Literacy and Numeracy Gains</b>	Youth (14-21)	*	8	12.5 N	30.0 (24.0)

Not Met	Met	Exceeded
3	3	3



State of Oregon - Department of Community Colleges and Workforce Development

**Table O - Local Performance (Common Exit)**

Program Year 2009 - 4th Qtr (Year-to-Date)

**Local Area Name: 240900 - Mid-Columbia Council Of Governments**

07/01/2009 - 06/30/2010		Served	Exited		
<b>Total Participants</b>	Adults	3,000	2,373		
	DW	1,766	1,077		
	Youth (14-21)	57	39		
10/01/2008 - 09/30/2009		N	D	Actual	Negotiated (80%)
<b>Entered Employment Rate</b>	Adults	579	1,156	50.1 <i>M</i>	57.0 (45.6)
	DW	326	638	51.1 <i>M</i>	57.0 (45.6)
	NEG	0	0		
04/01/2008 - 03/31/2009		N	D	Actual	Negotiated (80%)
<b>Employment Retention Rate</b>	Adults	253	342	74.0 <i>M</i>	81.0 (64.8)
	DW	121	174	69.5 <i>M</i>	81.0 (64.8)
	NEG	0	0		
04/01/2008 - 03/31/2009		N	D	Actual	Negotiated (80%)
<b>Average Earnings</b>	Adults	2,901,969	253	11,470.2 <i>E</i>	10,200.0 (8,160.0)
	DW	1,544,896	121	12,767.7 <i>M</i>	13,000.0 (10,400.0)
	NEG	0	0		
10/01/2008 - 09/30/2009		N	D	Actual	Negotiated (80%)
<b>Placement in Employment or Education</b>	Youth (14-21)	21	39	53.8 <i>N</i>	70.0 (56.0)
<b>Attainment of a Degree or Certificate</b>	Youth (14-21)	16	28	57.1 <i>M</i>	67.0 (53.6)
07/01/2009 - 06/30/2010		N	D	Actual	Negotiated (80%)
<b>Literacy and Numeracy Gains</b>	Youth (14-21)	0	7	0.0 <i>N</i>	30.0 (24.0)

<i>Not Met</i>	<i>Met</i>	<i>Exceeded</i>
2	6	1

State of Oregon - Department of Community Colleges and Workforce Development

**Table O - Local Performance (Common Exit)**

Program Year 2009 - 4th Qtr (Year-to-Date)

**Local Area Name: 241000 - Central Oregon Intergovernment Council**

07/01/2009 - 06/30/2010		Served	Exited		
<b>Total Participants</b>	Adults	14,808	12,279		
	DW	8,978	6,253		
	Youth (14-21)	166	74		
10/01/2008 - 09/30/2009		N	D	Actual	Negotiated (80%)
<b>Entered Employment Rate</b>	Adults	2,682	6,343	42.3 N	57.0 (45.6)
	DW	1,838	4,303	42.7 N	57.0 (45.6)
	NEG	40	69	58.0	
04/01/2008 - 03/31/2009		N	D	Actual	Negotiated (80%)
<b>Employment Retention Rate</b>	Adults	1,495	1,924	77.7 M	81.0 (64.8)
	DW	824	1,110	74.2 M	81.0 (64.8)
	NEG	38	47	80.9	
04/01/2008 - 03/31/2009		N	D	Actual	Negotiated (80%)
<b>Average Earnings</b>	Adults	19,019,508	1,494	12,730.6 E	10,200.0 (8,160.0)
	DW	10,991,005	824	13,338.6 E	13,000.0 (10,400.0)
	NEG	428,473	38	11,275.6	
10/01/2008 - 09/30/2009		N	D	Actual	Negotiated (80%)
<b>Placement in Employment or Education</b>	Youth (14-21)	23	44	52.3 N	70.0 (56.0)
<b>Attainment of a Degree or Certificate</b>	Youth (14-21)	37	46	80.4 E	67.0 (53.6)
07/01/2009 - 06/30/2010		N	D	Actual	Negotiated (80%)
<b>Literacy and Numeracy Gains</b>	Youth (14-21)	*	*	25.0 M	30.0 (24.0)

Not Met	Met	Exceeded
3	3	3

State of Oregon - Department of Community Colleges and Workforce Development

**Table O - Local Performance (Common Exit)**

Program Year 2009 - 4th Qtr (Year-to-Date)

**Local Area Name: 241100 - Central OR Intergovt Council - Klamath & Lake**

07/01/2009 - 06/30/2010		Served	Exited		
<b>Total Participants</b>	Adults	4,597	3,690		
	DW	2,745	1,820		
	Youth (14-21)	133	49		
10/01/2008 - 09/30/2009		N	D	Actual	Negotiated (80%)
<b>Entered Employment Rate</b>	Adults	685	1,610	42.5 N	57.0 (45.6)
	DW	331	852	38.8 N	57.0 (45.6)
	NEG	0	0		
04/01/2008 - 03/31/2009		N	D	Actual	Negotiated (80%)
<b>Employment Retention Rate</b>	Adults	248	387	64.1 N	81.0 (64.8)
	DW	102	159	64.2 N	81.0 (64.8)
	NEG	0	0		
04/01/2008 - 03/31/2009		N	D	Actual	Negotiated (80%)
<b>Average Earnings</b>	Adults	2,462,756	248	9,930.5 M	10,200.0 (8,160.0)
	DW	1,113,606	101	11,025.8 M	13,000.0 (10,400.0)
	NEG	0	0		
10/01/2008 - 09/30/2009		N	D	Actual	Negotiated (80%)
<b>Placement in Employment or Education</b>	Youth (14-21)	22	38	57.9 M	70.0 (56.0)
<b>Attainment of a Degree or Certificate</b>	Youth (14-21)	23	35	65.7 M	67.0 (53.6)
07/01/2009 - 06/30/2010		N	D	Actual	Negotiated (80%)
<b>Literacy and Numeracy Gains</b>	Youth (14-21)	6	14	42.9 E	30.0 (24.0)

Not Met	Met	Exceeded
4	4	1

State of Oregon - Department of Community Colleges and Workforce Development

**Table O - Local Performance (Common Exit)**

Program Year 2009 - 4th Qtr (Year-to-Date)

**Local Area Name: 241200 - Community Action Programs of East Central Oregon**

07/01/2009 - 06/30/2010		Served	Exited		
<b>Total Participants</b>	Adults	6,677	5,574		
	DW	3,529	2,297		
	Youth (14-21)	137	45		
10/01/2008 - 09/30/2009		N	D	Actual	Negotiated (80%)
<b>Entered Employment Rate</b>	Adults	1,456	2,642	55.1 <i>M</i>	57.0 (45.6)
	DW	741	1,324	56.0 <i>M</i>	57.0 (45.6)
	NEG	17	24	70.8	
04/01/2008 - 03/31/2009		N	D	Actual	Negotiated (80%)
<b>Employment Retention Rate</b>	Adults	693	919	75.4 <i>M</i>	81.0 (64.8)
	DW	264	373	70.8 <i>M</i>	81.0 (64.8)
	NEG	0	0		
04/01/2008 - 03/31/2009		N	D	Actual	Negotiated (80%)
<b>Average Earnings</b>	Adults	8,543,787	693	12,328.7 <i>E</i>	10,200.0 (8,160.0)
	DW	2,858,846	264	10,829.0 <i>M</i>	13,000.0 (10,400.0)
	NEG	0	0		
10/01/2008 - 09/30/2009		N	D	Actual	Negotiated (80%)
<b>Placement in Employment or Education</b>	Youth (14-21)	24	40	60.0 <i>M</i>	70.0 (56.0)
<b>Attainment of a Degree or Certificate</b>	Youth (14-21)	35	46	76.1 <i>E</i>	67.0 (53.6)
07/01/2009 - 06/30/2010		N	D	Actual	Negotiated (80%)
<b>Literacy and Numeracy Gains</b>	Youth (14-21)	*	11	36.4 <i>E</i>	30.0 (24.0)

<i>Not Met</i>	<i>Met</i>	<i>Exceeded</i>
0	6	3

State of Oregon - Department of Community Colleges and Workforce Development

**Table O - Local Performance (Common Exit)**

Program Year 2009 - 4th Qtr (Year-to-Date)

**Local Area Name: 241300 - Training & Employment Consortium - R13**

07/01/2009 - 06/30/2010		Served	Exited		
<b>Total Participants</b>	Adults	4,048	3,433		
	DW	2,408	1,662		
	Youth (14-21)	45	20		
10/01/2008 - 09/30/2009		N	D	Actual	Negotiated (80%)
<b>Entered Employment Rate</b>	Adults	847	1,580	53.6 <i>M</i>	57.0 (45.6)
	DW	532	946	56.2 <i>M</i>	57.0 (45.6)
	NEG	50	62	80.6	
04/01/2008 - 03/31/2009		N	D	Actual	Negotiated (80%)
<b>Employment Retention Rate</b>	Adults	540	680	79.4 <i>M</i>	81.0 (64.8)
	DW	237	303	78.2 <i>M</i>	81.0 (64.8)
	NEG	0	0		
04/01/2008 - 03/31/2009		N	D	Actual	Negotiated (80%)
<b>Average Earnings</b>	Adults	6,730,475	540	12,463.8 <i>E</i>	10,200.0 (8,160.0)
	DW	3,303,372	237	13,938.3 <i>E</i>	13,000.0 (10,400.0)
	NEG	0	0		
10/01/2008 - 09/30/2009		N	D	Actual	Negotiated (80%)
<b>Placement in Employment or Education</b>	Youth (14-21)	9	12	75.0 <i>E</i>	70.0 (56.0)
<b>Attainment of a Degree or Certificate</b>	Youth (14-21)	11	13	84.6 <i>E</i>	67.0 (53.6)
07/01/2009 - 06/30/2010		N	D	Actual	Negotiated (80%)
<b>Literacy and Numeracy Gains</b>	Youth (14-21)	8	9	88.9 <i>E</i>	30.0 (24.0)

<i>Not Met</i>	<i>Met</i>	<i>Exceeded</i>
0	4	5

State of Oregon - Department of Community Colleges and Workforce Development

**Table O - Local Performance (Common Exit)**

Program Year 2009 - 4th Qtr (Year-to-Date)

**Local Area Name: 241400 - Training & Employment Consortium - R14**

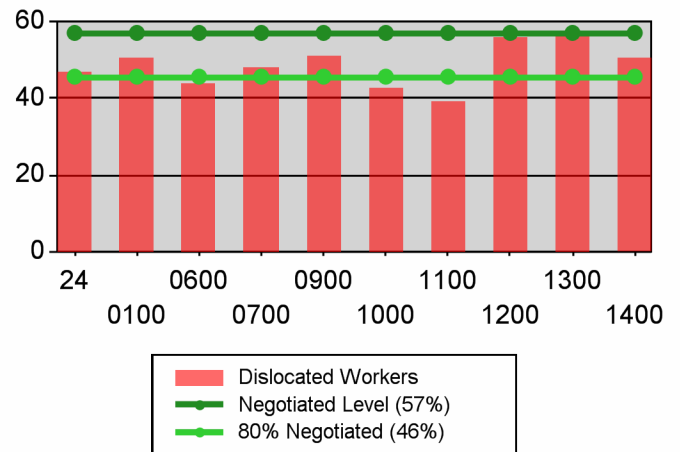
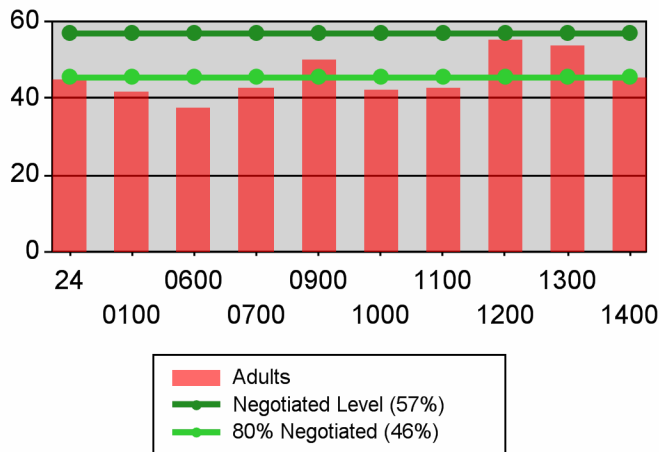
07/01/2009 - 06/30/2010		Served	Exited		
<b>Total Participants</b>	Adults	3,817	3,336		
	DW	2,143	1,565		
	Youth (14-21)	62	39		
10/01/2008 - 09/30/2009		N	D	Actual	Negotiated (80%)
<b>Entered Employment Rate</b>	Adults	729	1,612	45.2 <i>N</i>	57.0 (45.6)
	DW	549	1,087	50.5 <i>M</i>	57.0 (45.6)
	NEG	0	0		
04/01/2008 - 03/31/2009		N	D	Actual	Negotiated (80%)
<b>Employment Retention Rate</b>	Adults	366	545	67.2 <i>M</i>	81.0 (64.8)
	DW	251	355	70.7 <i>M</i>	81.0 (64.8)
	NEG	0	0		
04/01/2008 - 03/31/2009		N	D	Actual	Negotiated (80%)
<b>Average Earnings</b>	Adults	4,167,952	366	11,387.8 <i>E</i>	10,200.0 (8,160.0)
	DW	3,501,291	249	14,061.4 <i>E</i>	13,000.0 (10,400.0)
	NEG	0	0		
10/01/2008 - 09/30/2009		N	D	Actual	Negotiated (80%)
<b>Placement in Employment or Education</b>	Youth (14-21)	11	24	45.8 <i>N</i>	70.0 (56.0)
<b>Attainment of a Degree or Certificate</b>	Youth (14-21)	16	25	64.0 <i>M</i>	67.0 (53.6)
07/01/2009 - 06/30/2010		N	D	Actual	Negotiated (80%)
<b>Literacy and Numeracy Gains</b>	Youth (14-21)	*	15	20.0 <i>N</i>	30.0 (24.0)

<i>Not Met</i>	<i>Met</i>	<i>Exceeded</i>
3	4	2

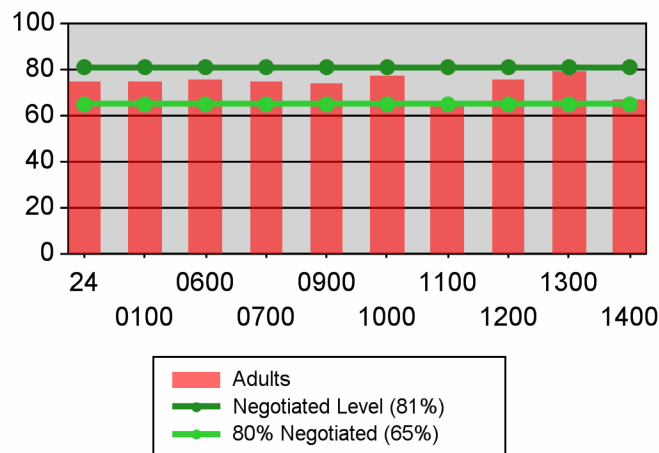
**Table O - Local Performance (Common Exit)**

Program Year 2009 - 4th Qtr (Year-to-Date)

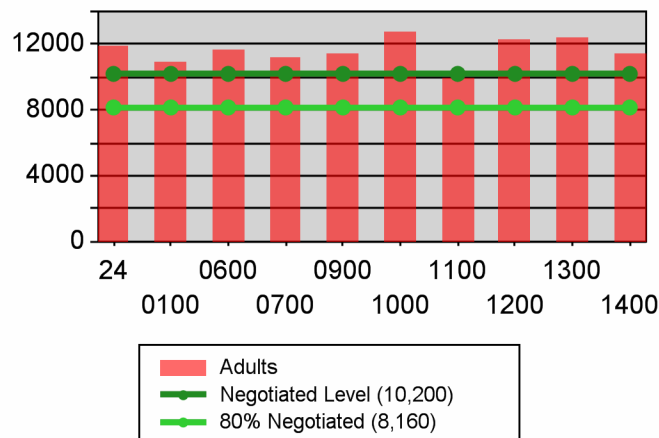
### Entered Employment Rate



### Retention Rate



### Average Earnings



**Table O - Local Performance (Common Exit)**

Program Year 2009 - 4th Qtr (Year-to-Date)

**Youth**

