

# WIA Annual Report (ETA Form 9091)

## Statewide PY 2010

### Adult Program Results

Reported Information	Negotiated Performance Level (80%)	Actual Performance	Numerator / Denominator
Entered Employment Rate	57.0% (45.6%)	48.4%	66,176 136,722
Employment Retention Rate	80.0% (64.0%)	79.4%	57,419 72,281
Average Earnings	\$12,500.0 (\$10,000.0)	\$12,872.2	739,068,330 57,416

### Adult Special Populations

Reported Information	Public Assistance Recipients Receiving Intensive or Training Services		Veterans		Individuals with Disabilities		Older Individuals	
Entered Employment Rate	44.3%	7,169 16,172	43.5%	5,815 13,362	29.0%	1,414 4,879	40.5%	8,556 21,107
Employment Retention Rate	75.7%	4,046 5,347	78.0%	4,797 6,147	74.8%	992 1,327	78.6%	7,115 9,051
Average Earnings	\$9,456.9	38,253,092 4,045	\$14,837.9	71,177,505 4,797	\$10,762.0	10,675,878 992	\$13,681.3	97,342,290 7,115

### Other Adult Populations

Reported Information	Individuals who Received Training Services		Individuals who only Received Core and Intensive Services	
Entered Employment Rate	58.7%	1,534 2,615	48.2%	64,642 134,107
Employment Retention Rate	84.8%	1,095 1,291	79.3%	56,324 70,990
Average Earnings	\$14,077.5	15,414,885 1,095	\$12,848.7	723,653,445 56,321

### Dislocated Worker Program Results

Reported Information	Negotiated Performance Level (80%)	Actual Performance	Numerator / Denominator
Entered Employment Rate	57.0% (45.6%)	49.1%	55,586 113,120
Employment Retention Rate	80.0% (64.0%)	79.3%	35,325 44,572
Average Earnings	\$12,500.0 (\$10,000.0)	\$13,936.2	492,266,929 35,323

### Dislocated Worker Special Populations

Reported Information	Veterans		Individuals with Disabilities		Older Individuals		Displaced Homemakers	
Entered Employment Rate	44.4%	5,047 11,369	30.3%	1,265 4,180	41.4%	7,530 18,199	45.5%	12,503 27,468
Employment Retention Rate	76.8%	3,212 4,181	73.5%	714 971	77.3%	4,849 6,272	77.8%	6,748 8,670
Average Earnings	\$15,237.9	48,943,975 3,212	\$11,201.7	7,998,021 714	\$14,350.6	69,586,156 4,849	\$11,540.2	77,873,398 6,748

\* Data suppressed for confidentiality purposes

# WIA Annual Report (ETA Form 9091)

## Statewide PY 2010

### Other Dislocated Workers

Reported Information	Individuals who Recieved Training Services		Individuals who only Received Core and Intensive Services	
Entered Employment Rate	58.5%	1,609 2,750	48.9%	53,977 110,370
Employment Retention Rate	83.4%	1,019 1,222	79.1%	34,306 43,350
Average Earnings	\$14,567.8	14,830,020 1,018	\$13,917.4	477,436,909 34,305

### Youth (14-21) Program Results

Reported Information	Negotiated Performance Level (80%)	Actual Performance	Numerator / Denominator
Placement in Employment or Education	70.0% (56.0%)	69.7%	863 1,238
Attainment of a Degree or Certificate	69.0% (55.2%)	70.4%	774 1,099
Literacy and Numeracy Gains	31.0% (24.8%)	44.1%	296 671

### Other Reported Information

Reported Information	Adults		Dislocated Workers	
12-Month Employment Retention	80.2%	49,393 61,591	79.3%	26,796 33,777
12-Month Earnings Change	(\$1,889.8)	-116,382,913 61,584	80.1%	368,838,960 460,462,153
Entered Non-Traditional Employment	0.0%	0 66,176	0.0%	0 55,586
Wages At Entered Employment	\$507,341.5	335,672,327 66,163	\$527,908.0	293,390,142 55,576
Employment Related Training	0.0%	0 1,534	0.1%	* *

### Participation Levels

Reported Information	Total Participants Served	Total Exiters
Total Adult Customers	343,882	295,887
Total Adult self-service only	98,987	103,032
WIA Adult	341,356	293,533
WIA Dislocated Worker	292,656	245,049
Total Youth (14-21)	3,404	1,605
Younger Youth (14-18)	2,462	1,118
Older Youth (19-21)	942	487
Out-of-School Youth	1,643	877
In-School Youth	1,761	728

Performance was Calculated: 9/19/2011 2:03:19 PM

\* Data suppressed for confidentiality purposes

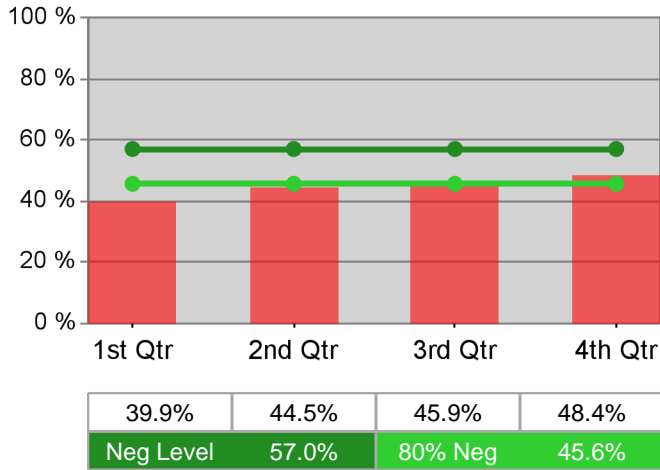
Run Date: 9/19/2011 3:30:04 PM

Page 2 of 2

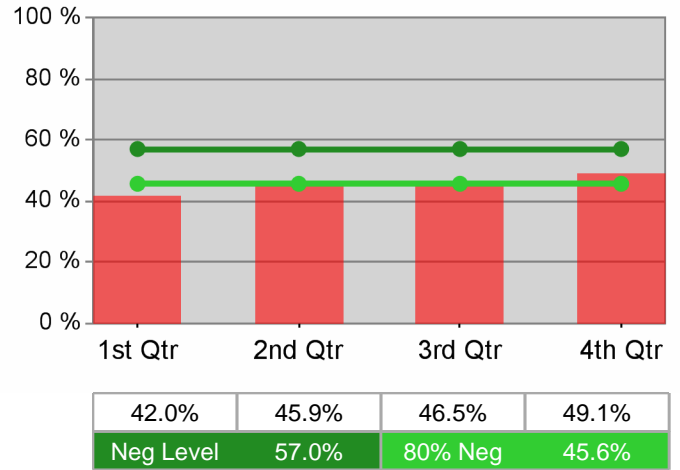
# State of Oregon - Department of Community Colleges and Workforce Development

## Statewide PY 2010 Year-to-Date

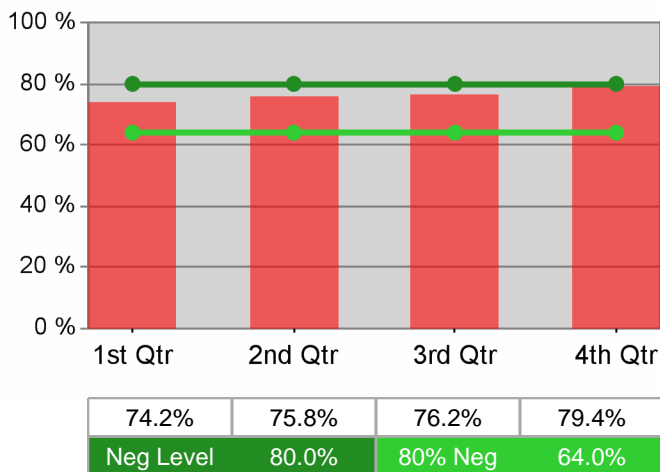
### Adult Employment



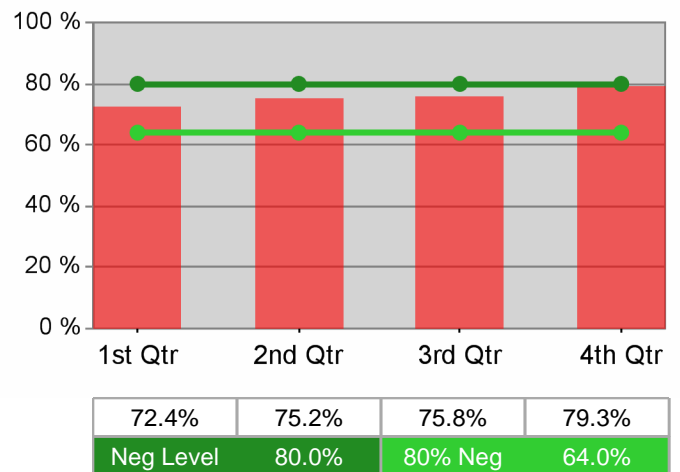
### Dislocated Worker Employment



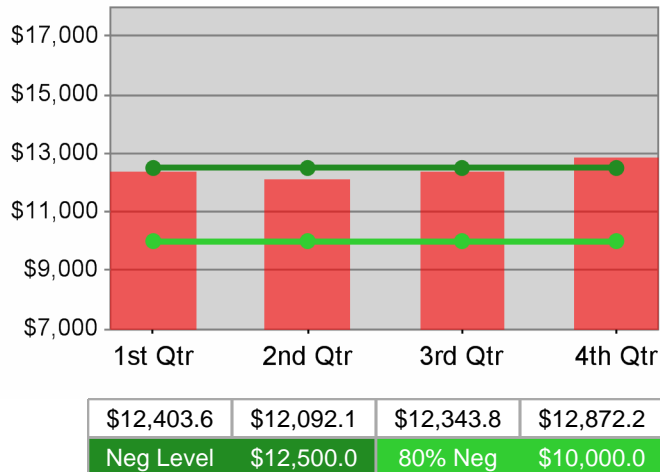
### Adult Retention



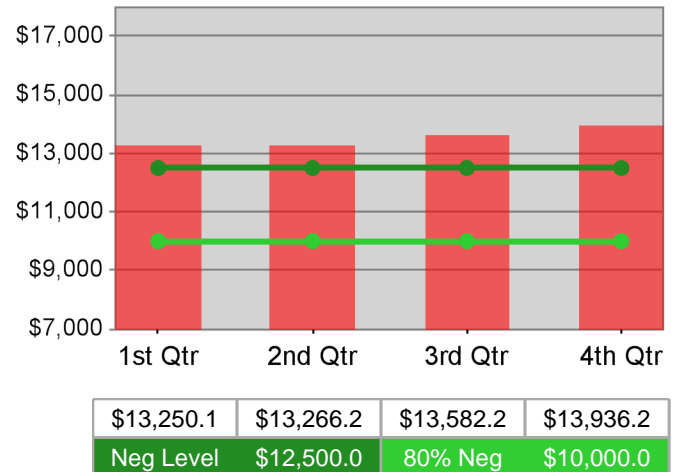
### Dislocated Worker Retention



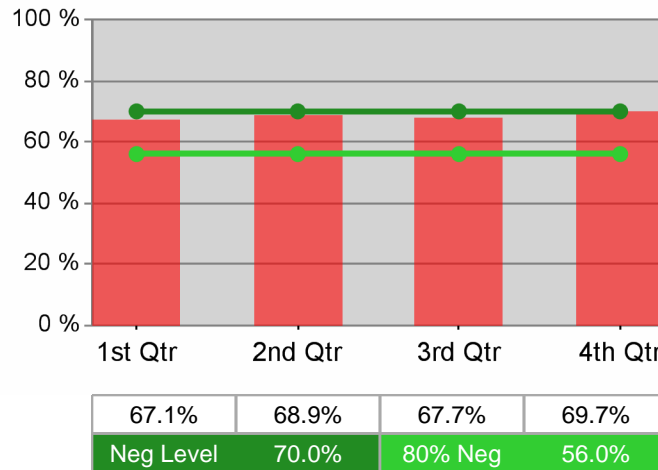
### Adult Average Earnings



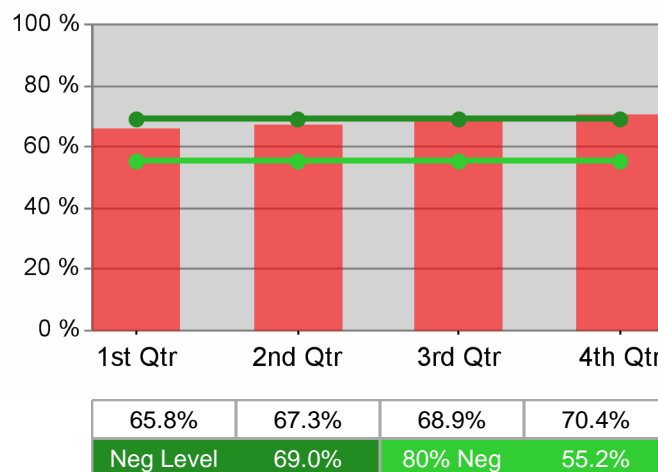
### Dislocated Worker Average Earnings



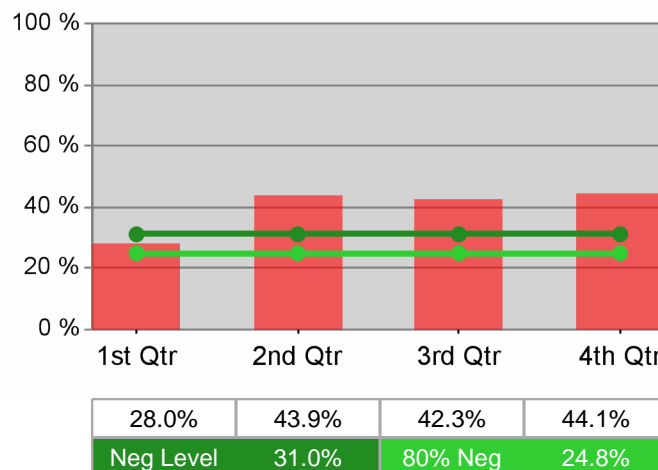
**Statewide  
PY 2010 Year-to-Date  
Youth Employment / Education**



**Youth Degree / Certificate**



**Youth Numeracy / Literacy**



# WIA Annual Report (ETA Form 9091)

## Worksystems Inc PY 2010

### Adult Program Results

Reported Information	Negotiated Performance Level (80%)	Actual Performance	Numerator / Denominator
Entered Employment Rate	57.0% (45.6%)	48.7%	15,760 32,329
Employment Retention Rate	80.0% (64.0%)	81.2%	12,814 15,773
Average Earnings	\$12,500.0 (\$10,000.0)	\$15,801.5	202,449,003 12,812

### Adult Special Populations

Reported Information	Public Assistance Recipients Receiving Intensive or Training Services		Veterans		Individuals with Disabilities		Older Individuals	
Entered Employment Rate	45.0%	3,106 6,907	43.5%	1,121 2,576	33.8%	410 1,212	38.9%	2,039 5,243
Employment Retention Rate	75.7%	1,741 2,301	77.6%	857 1,104	72.4%	294 406	75.6%	1,528 2,021
Average Earnings	\$9,909.6	17,242,676 1,740	\$17,933.9	15,369,319 857	\$11,823.5	3,476,122 294	\$16,327.8	24,948,896 1,528

### Other Adult Populations

Reported Information	Individuals who Received Training Services		Individuals who only Received Core and Intensive Services	
Entered Employment Rate	69.9%	584 835	48.2%	15,176 31,494
Employment Retention Rate	86.2%	405 470	81.1%	12,409 15,303
Average Earnings	\$15,468.9	6,264,908 405	\$15,812.4	196,184,095 12,407

### Dislocated Worker Program Results

Reported Information	Negotiated Performance Level (80%)	Actual Performance	Numerator / Denominator
Entered Employment Rate	57.0% (45.6%)	48.8%	14,987 30,736
Employment Retention Rate	80.0% (64.0%)	80.9%	11,396 14,079
Average Earnings	\$12,500.0 (\$10,000.0)	\$16,170.4	184,261,487 11,395

### Dislocated Worker Special Populations

Reported Information	Veterans		Individuals with Disabilities		Older Individuals		Displaced Homemakers	
Entered Employment Rate	43.6%	1,106 2,534	33.9%	384 1,133	39.2%	2,002 5,106	47.3%	3,672 7,771
Employment Retention Rate	77.8%	811 1,042	72.1%	258 358	75.2%	1,391 1,850	78.7%	2,369 3,010
Average Earnings	\$17,987.7	14,588,020 811	\$12,126.7	3,128,680 258	\$16,670.8	23,189,083 1,391	\$12,468.9	29,538,787 2,369

\* Data suppressed for confidentiality purposes

# WIA Annual Report (ETA Form 9091)

## Worksystems Inc PY 2010

### Other Dislocated Workers

Reported Information	Individuals who Recieved Training Services		Individuals who only Received Core and Intensive Services	
Entered Employment Rate	70.1%	576 822	48.2%	14,411 29,914
Employment Retention Rate	85.5%	355 415	80.8%	11,041 13,664
Average Earnings	\$15,974.0	5,670,759 355	\$16,176.7	178,590,729 11,040

### Youth (14-21) Program Results

Reported Information	Negotiated Performance Level (80%)	Actual Performance	Numerator / Denominator
Placement in Employment or Education	70.0% (56.0%)	81.5%	207 254
Attainment of a Degree or Certificate	69.0% (55.2%)	75.0%	192 256
Literacy and Numeracy Gains	31.0% (24.8%)	50.0%	60 120

### Other Reported Information

Reported Information	Adults		Dislocated Workers	
12-Month Employment Retention	82.2%	11,500 13,991	81.9%	10,063 12,282
12-Month Earnings Change	(\$3,505.6)	-49,043,727 13,990	77.3%	162,435,482 210,047,357
Entered Non-Traditional Employment	0.0%	0 15,760	0.0%	0 14,987
Wages At Entered Employment	\$634,896.3	100,046,954 15,758	\$643,915.1	96,497,124 14,986
Employment Related Training	0.0%	0 584	0.0%	0 576

### Participation Levels

Reported Information	Total Participants Served	Total Exiters
Total Adult Customers	67,012	47,185
Total Adult self-service only	0	0
WIA Adult	66,928	47,109
WIA Dislocated Worker	61,297	43,236
Total Youth (14-21)	670	338
Younger Youth (14-18)	498	237
Older Youth (19-21)	172	101
Out-of-School Youth	314	168
In-School Youth	356	170

Performance was Calculated: 9/19/2011 2:10:48 PM

\* Data suppressed for confidentiality purposes

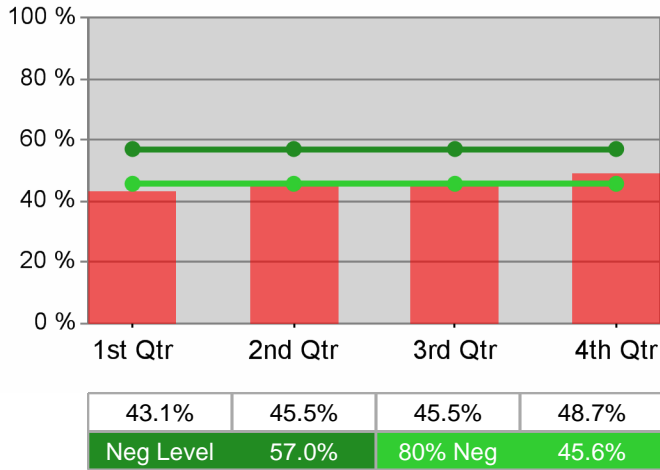
Run Date: 9/19/2011 3:30:05 PM

Page 2 of 2

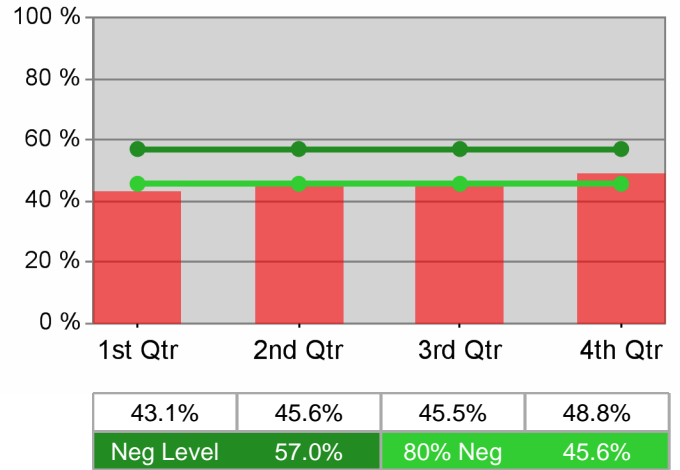
# State of Oregon - Department of Community Colleges and Workforce Development

## Worksystems Inc PY 2010 Year-to-Date

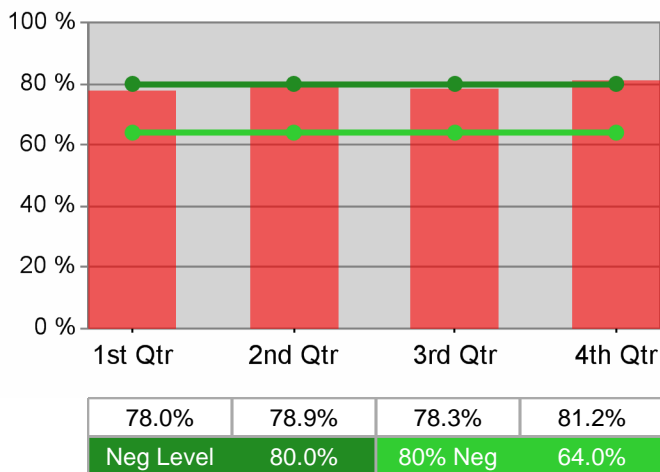
### Adult Employment



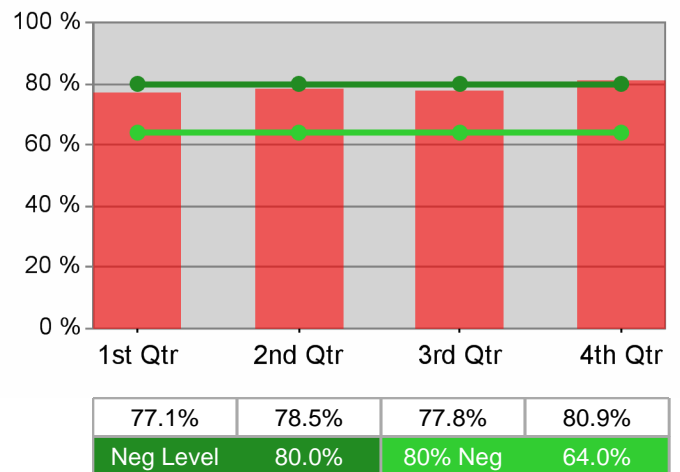
### Dislocated Worker Employment



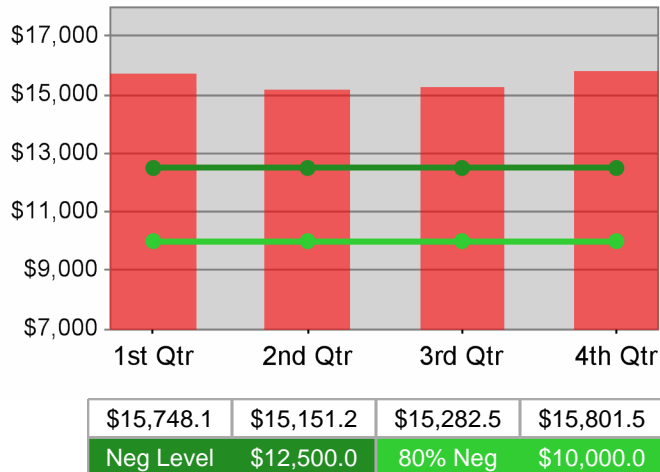
### Adult Retention



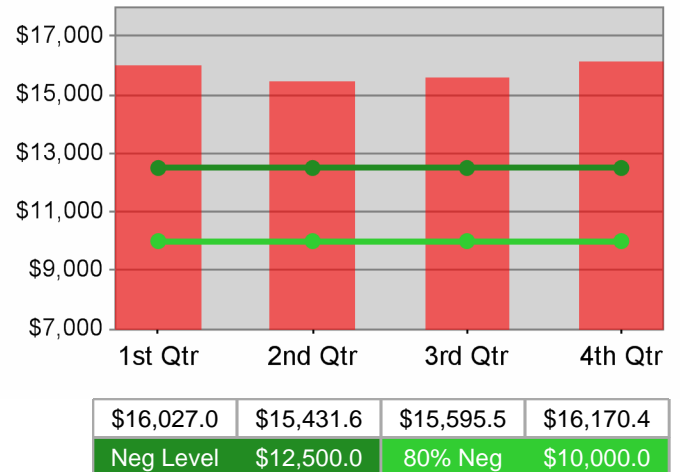
### Dislocated Worker Retention



### Adult Average Earnings

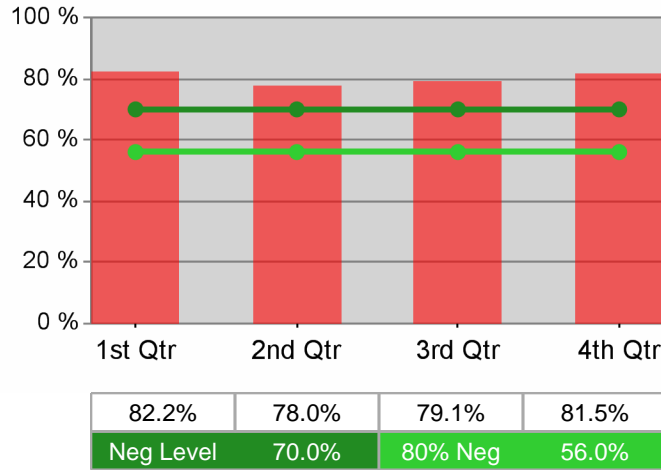


### Dislocated Worker Average Earnings

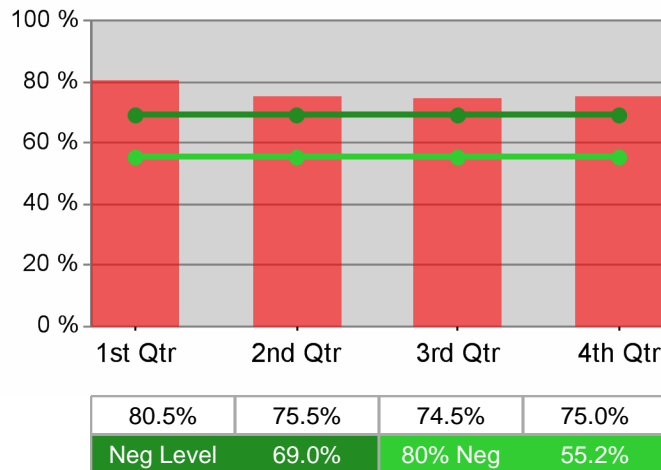


**Worksystems Inc  
PY 2010 Year-to-Date**

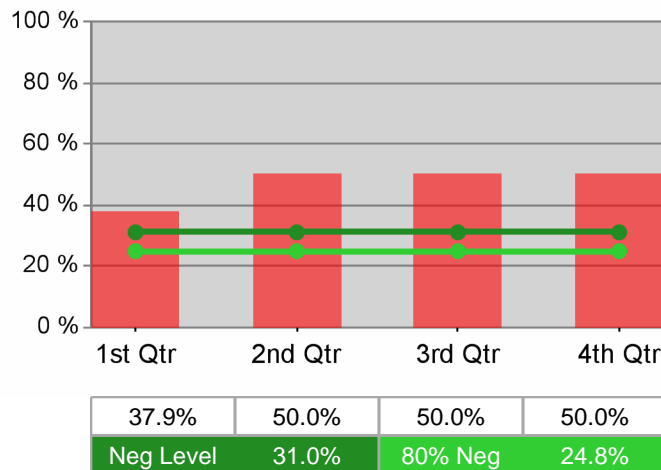
**Youth Employment / Education**



**Youth Degree / Certificate**



**Youth Numeracy / Literacy**





# WIA Annual Report (ETA Form 9091)

## Job Growers Incorporated PY 2010

### Adult Program Results

Reported Information	Negotiated Performance Level (80%)	Actual Performance	Numerator / Denominator
Entered Employment Rate	57.0% (45.6%)	47.2%	9,726 20,595
Employment Retention Rate	80.0% (64.0%)	79.0%	8,668 10,973
Average Earnings	\$12,500.0 (\$10,000.0)	\$11,893.9	103,095,963 8,668

### Adult Special Populations

Reported Information	Public Assistance Recipients Receiving Intensive or Training Services		Veterans		Individuals with Disabilities		Older Individuals	
Entered Employment Rate	42.2%	183 434	42.1%	811 1,927	25.6%	163 636	41.6%	1,187 2,854
Employment Retention Rate	80.1%	117 146	78.3%	701 895	76.3%	119 156	78.6%	961 1,222
Average Earnings	\$9,829.5	1,150,048 117	\$14,704.1	10,307,580 701	\$11,599.7	1,380,363 119	\$12,367.4	11,885,118 961

### Other Adult Populations

Reported Information	Individuals who Received Training Services		Individuals who only Received Core and Intensive Services	
Entered Employment Rate	47.1%	104 221	47.2%	9,622 20,374
Employment Retention Rate	88.3%	121 137	78.9%	8,547 10,836
Average Earnings	\$12,253.6	1,482,689 121	\$11,888.8	101,613,274 8,547

### Dislocated Worker Program Results

Reported Information	Negotiated Performance Level (80%)	Actual Performance	Numerator / Denominator
Entered Employment Rate	57.0% (45.6%)	48.2%	7,298 15,133
Employment Retention Rate	80.0% (64.0%)	77.8%	3,577 4,598
Average Earnings	\$12,500.0 (\$10,000.0)	\$12,420.2	44,427,110 3,577

### Dislocated Worker Special Populations

Reported Information	Veterans		Individuals with Disabilities		Older Individuals		Displaced Homemakers	
Entered Employment Rate	41.9%	627 1,495	27.5%	139 506	42.3%	922 2,180	41.5%	1,429 3,444
Employment Retention Rate	74.5%	315 423	73.3%	63 86	75.6%	428 566	76.1%	580 762
Average Earnings	\$14,819.6	4,668,168 315	\$11,083.8	698,277 63	\$12,615.1	5,399,283 428	\$11,340.8	6,577,635 580

\* Data suppressed for confidentiality purposes

# WIA Annual Report (ETA Form 9091)

## Job Growers Incorporated PY 2010

### Other Dislocated Workers

Reported Information	Individuals who Recieved Training Services		Individuals who only Received Core and Intensive Services	
Entered Employment Rate	42.9%	102 238	48.3%	7,196 14,895
Employment Retention Rate	87.0%	87 100	77.6%	3,490 4,498
Average Earnings	\$13,133.1	1,142,578 87	\$12,402.4	43,284,532 3,490

### Youth (14-21) Program Results

Reported Information	Negotiated Performance Level (80%)	Actual Performance	Numerator / Denominator
Placement in Employment or Education	70.0% (56.0%)	72.8%	134 184
Attainment of a Degree or Certificate	69.0% (55.2%)	72.6%	90 124
Literacy and Numeracy Gains	31.0% (24.8%)	31.5%	46 146

### Other Reported Information

Reported Information	Adults		Dislocated Workers	
12-Month Employment Retention	80.0%	7,412 9,267	76.6%	2,056 2,685
12-Month Earnings Change	(\$1,305.1)	-12,091,949 9,265	90.8%	22,773,378 25,083,008
Entered Non-Traditional Employment	0.0%	0 9,726	0.0%	0 7,298
Wages At Entered Employment	\$455,686.8	44,297,311 9,721	\$465,914.3	33,993,104 7,296
Employment Related Training	0.0%	0 104	1.0%	* *

### Participation Levels

Reported Information	Total Participants Served	Total Exiters
Total Adult Customers	34,241	29,318
Total Adult self-service only	0	0
WIA Adult	33,959	29,098
WIA Dislocated Worker	28,995	24,318
Total Youth (14-21)	587	206
Younger Youth (14-18)	390	106
Older Youth (19-21)	197	100
Out-of-School Youth	312	136
In-School Youth	275	70

Performance was Calculated: 9/19/2011 2:13:22 PM

\* Data suppressed for confidentiality purposes

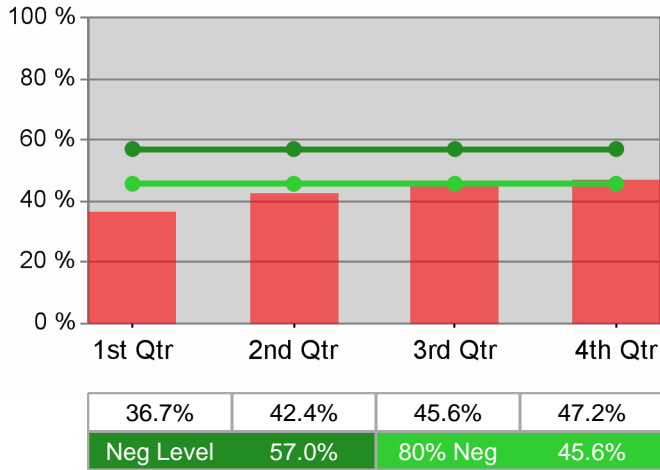
Run Date: 9/19/2011 3:30:07 PM

Page 2 of 2

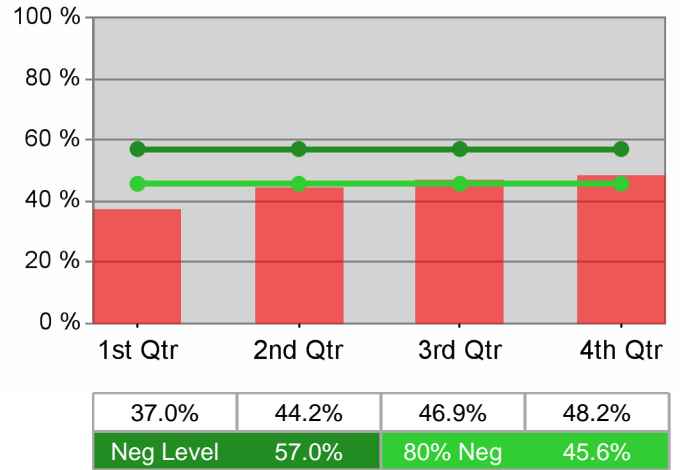
# State of Oregon - Department of Community Colleges and Workforce Development

## Job Growers Incorporated PY 2010 Year-to-Date

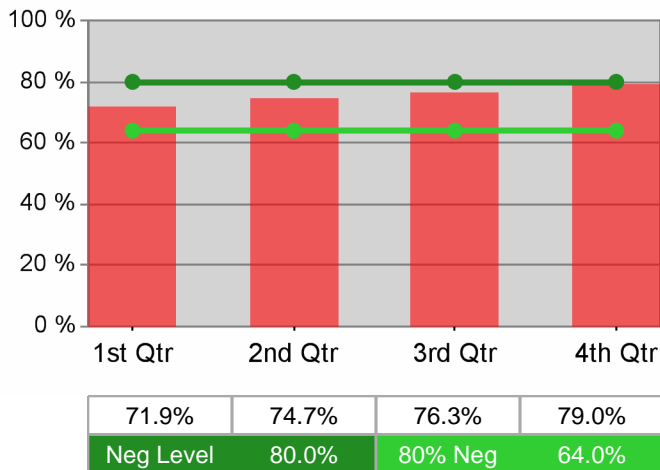
### Adult Employment



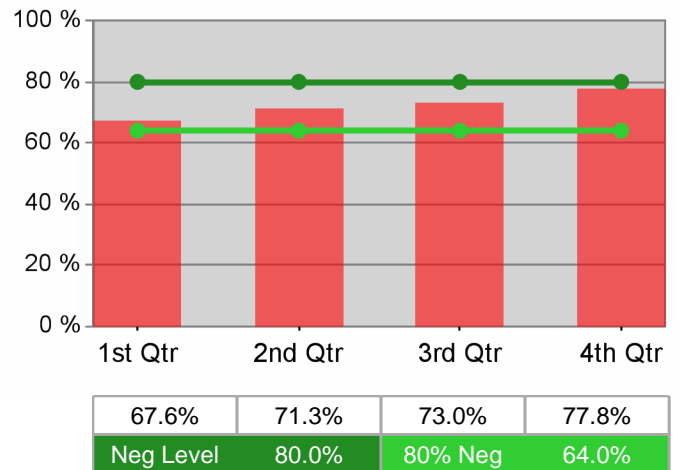
### Dislocated Worker Employment



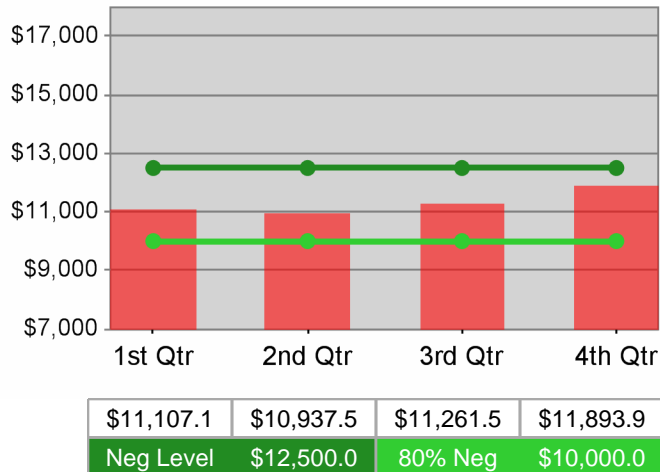
### Adult Retention



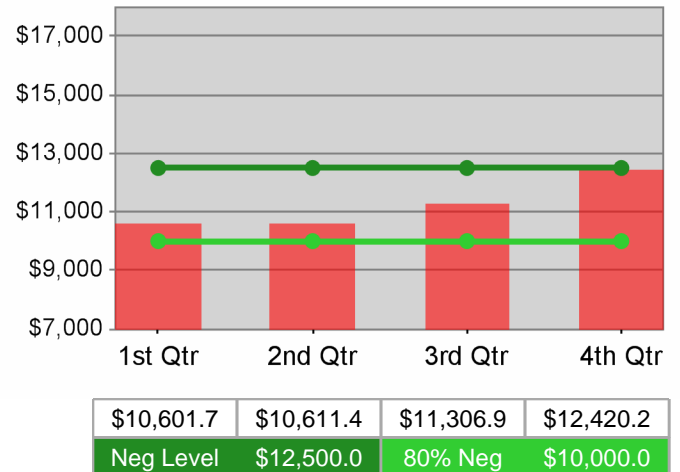
### Dislocated Worker Retention



### Adult Average Earnings

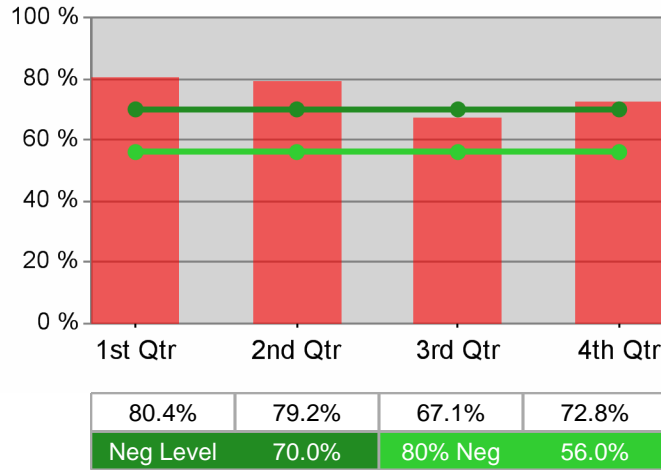


### Dislocated Worker Average Earnings

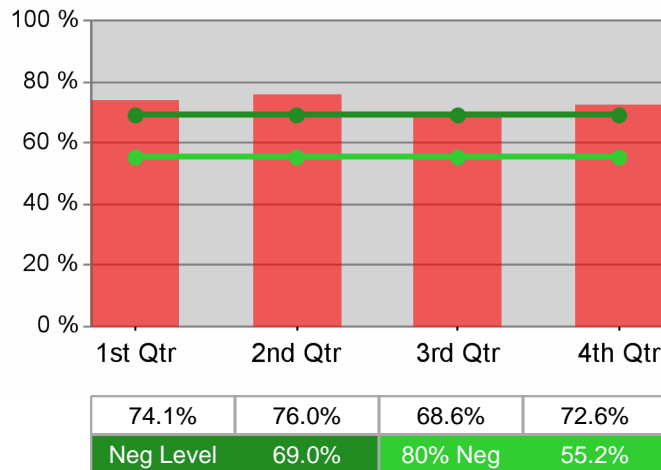


**Job Growers Incorporated  
PY 2010 Year-to-Date**

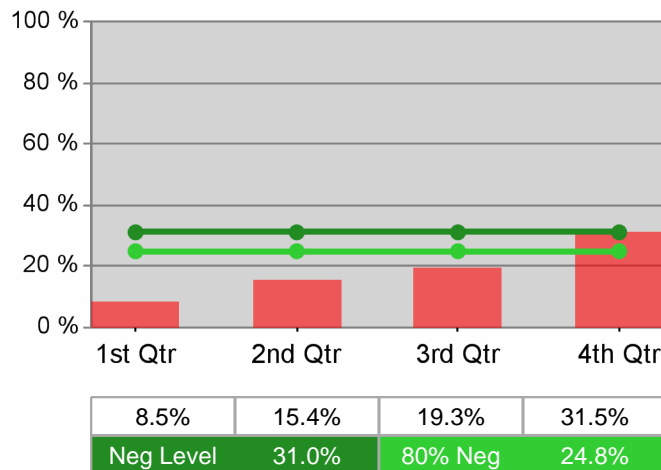
**Youth Employment / Education**



**Youth Degree / Certificate**



**Youth Numeracy / Literacy**



# WIA Annual Report (ETA Form 9091)

## Community Service Consortium PY 2010

### Adult Program Results

Reported Information	Negotiated Performance Level (80%)	Actual Performance	Numerator / Denominator
Entered Employment Rate	57.0% (45.6%)	50.0%	5,367 10,725
Employment Retention Rate	80.0% (64.0%)	81.0%	5,193 6,410
Average Earnings	\$12,500.0 (\$10,000.0)	\$12,582.4	65,340,503 5,193

### Adult Special Populations

Reported Information	Public Assistance Recipients Receiving Intensive or Training Services		Veterans		Individuals with Disabilities		Older Individuals	
Entered Employment Rate	42.7%	1,609 3,765	47.3%	567 1,200	31.5%	186 590	46.3%	711 1,535
Employment Retention Rate	74.1%	1,139 1,537	79.8%	512 642	79.0%	173 219	82.3%	738 897
Average Earnings	\$8,464.7	9,641,283 1,139	\$14,748.8	7,551,405 512	\$10,184.3	1,761,878 173	\$13,283.8	9,803,415 738

### Other Adult Populations

Reported Information	Individuals who Received Training Services		Individuals who only Received Core and Intensive Services	
Entered Employment Rate	50.7%	72 142	50.0%	5,295 10,583
Employment Retention Rate	80.0%	52 65	81.0%	5,141 6,345
Average Earnings	\$10,180.2	529,372 52	\$12,606.7	64,811,131 5,141

### Dislocated Worker Program Results

Reported Information	Negotiated Performance Level (80%)	Actual Performance	Numerator / Denominator
Entered Employment Rate	57.0% (45.6%)	50.0%	4,956 9,907
Employment Retention Rate	80.0% (64.0%)	80.1%	4,123 5,149
Average Earnings	\$12,500.0 (\$10,000.0)	\$12,616.6	52,018,207 4,123

### Dislocated Worker Special Populations

Reported Information	Veterans		Individuals with Disabilities		Older Individuals		Displaced Homemakers	
Entered Employment Rate	47.2%	547 1,159	31.4%	171 544	46.0%	678 1,475	46.1%	1,648 3,572
Employment Retention Rate	78.0%	404 518	77.3%	133 172	81.1%	614 757	76.6%	1,189 1,553
Average Earnings	\$14,880.5	6,011,727 404	\$9,811.6	1,304,948 133	\$13,346.4	8,194,717 614	\$10,416.8	12,385,580 1,189

\* Data suppressed for confidentiality purposes

# WIA Annual Report (ETA Form 9091)

## Community Service Consortium PY 2010

### Other Dislocated Workers

Reported Information	Individuals who Received Training Services		Individuals who only Received Core and Intensive Services	
Entered Employment Rate	51.1%	68 133	50.0%	4,888 9,774
Employment Retention Rate	74.0%	37 50	80.1%	4,086 5,099
Average Earnings	\$10,252.6	379,348 37	\$12,638.0	51,638,859 4,086

### Youth (14-21) Program Results

Reported Information	Negotiated Performance Level (80%)	Actual Performance	Numerator / Denominator
Placement in Employment or Education	70.0% (56.0%)	60.4%	55 91
Attainment of a Degree or Certificate	69.0% (55.2%)	67.7%	67 99
Literacy and Numeracy Gains	31.0% (24.8%)	35.3%	18 51

### Other Reported Information

Reported Information	Adults		Dislocated Workers	
12-Month Employment Retention	82.0%	4,478 5,462	80.6%	3,436 4,261
12-Month Earnings Change	(\$1,324.7)	-7,234,068 5,461	86.7%	41,896,871 48,323,484
Entered Non-Traditional Employment	0.0%	0 5,367	0.0%	0 4,956
Wages At Entered Employment	\$491,081.7	26,356,357 5,367	\$498,043.4	24,683,029 4,956
Employment Related Training	0.0%	0 72	0.0%	0 68

### Participation Levels

Reported Information	Total Participants Served	Total Exiters
Total Adult Customers	18,515	14,681
Total Adult self-service only	0	0
WIA Adult	18,485	14,652
WIA Dislocated Worker	16,314	12,771
Total Youth (14-21)	345	130
Younger Youth (14-18)	258	95
Older Youth (19-21)	87	35
Out-of-School Youth	128	62
In-School Youth	217	68

Performance was Calculated: 9/19/2011 2:15:51 PM

\* Data suppressed for confidentiality purposes

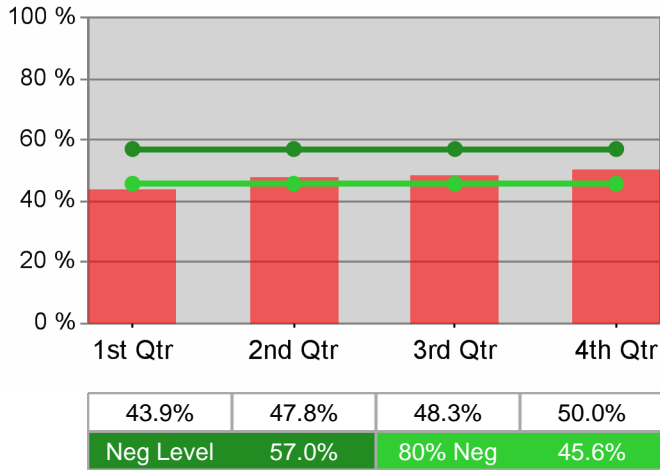
Run Date: 9/19/2011 3:30:08 PM

Page 2 of 2

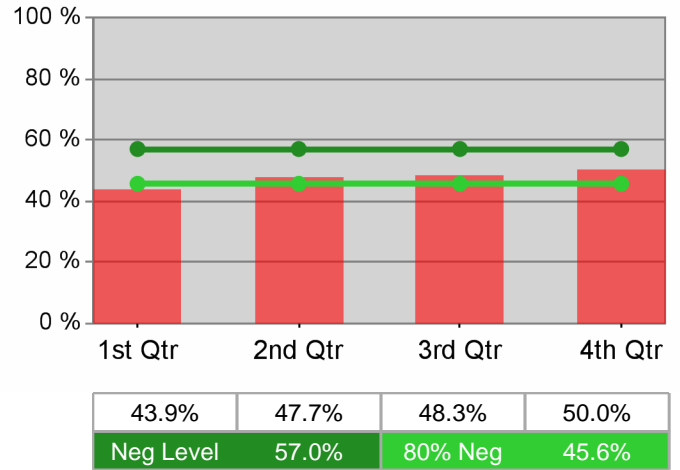
State of Oregon - Department of Community Colleges and Workforce Development

Community Service Consortium  
PY 2010 Year-to-Date

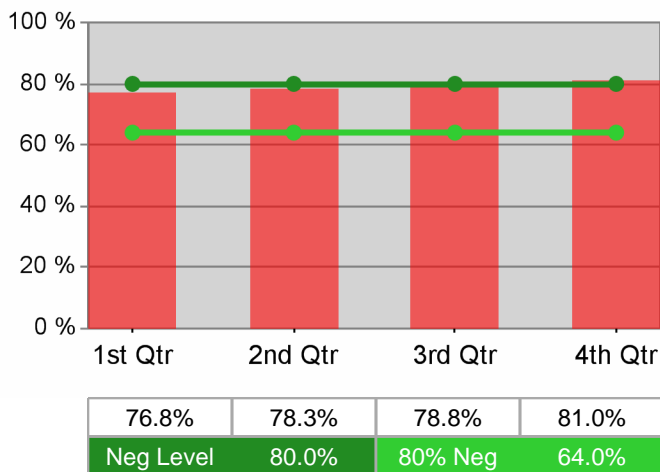
Adult Employment



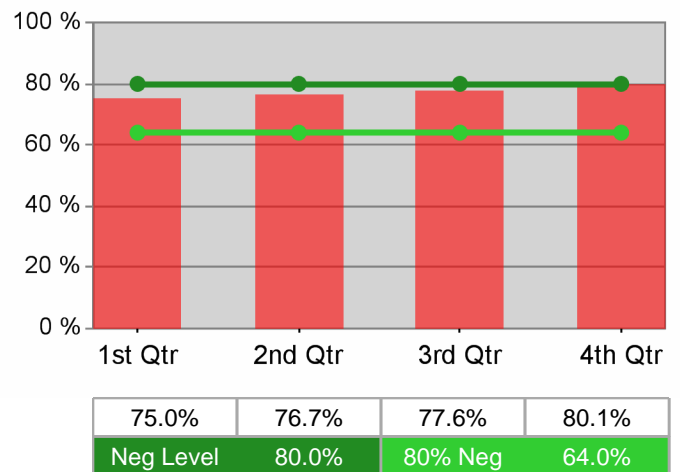
Dislocated Worker Employment



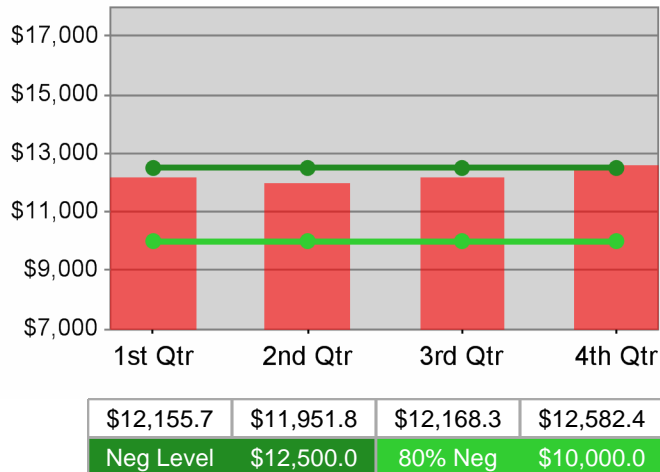
Adult Retention



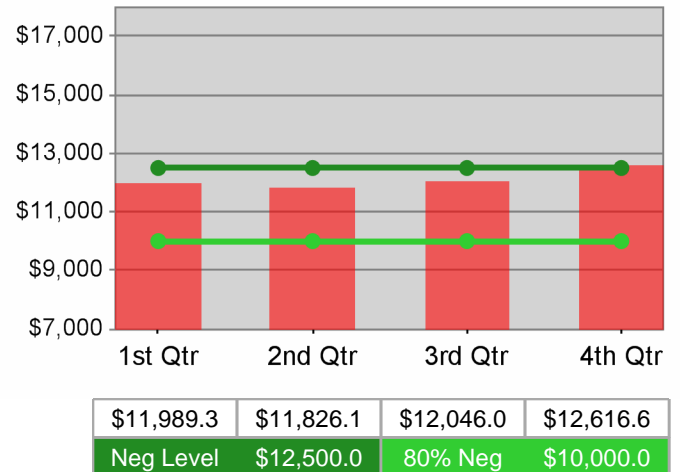
Dislocated Worker Retention



Adult Average Earnings

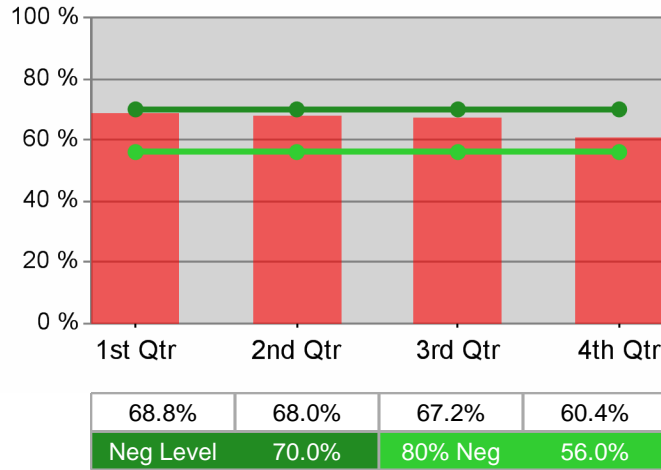


Dislocated Worker Average Earnings

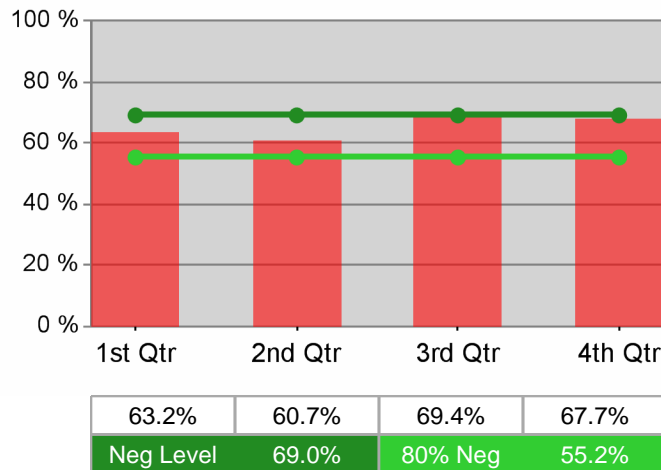


**Community Service Consortium  
PY 2010 Year-to-Date**

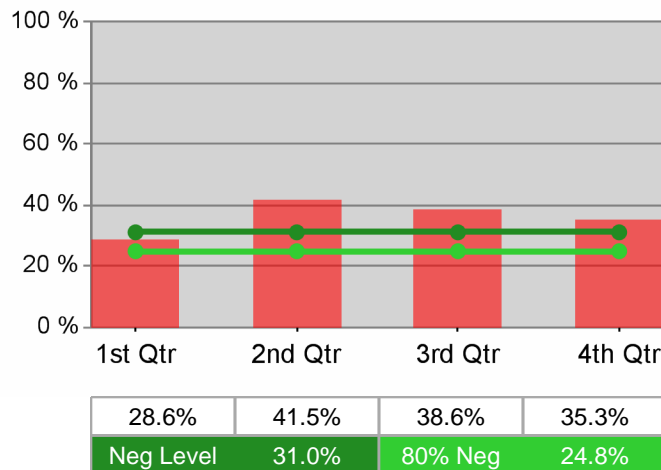
**Youth Employment / Education**



**Youth Degree / Certificate**



**Youth Numeracy / Literacy**





# WIA Annual Report (ETA Form 9091)

## Lane Workforce Partnership PY 2010

### Adult Program Results

Reported Information	Negotiated Performance Level (80%)	Actual Performance	Numerator / Denominator
Entered Employment Rate	57.0% (45.6%)	46.2%	6,731 14,584
Employment Retention Rate	80.0% (64.0%)	79.1%	6,258 7,915
Average Earnings	\$12,500.0 (\$10,000.0)	\$11,616.8	72,698,040 6,258

### Adult Special Populations

Reported Information	Public Assistance Recipients Receiving Intensive or Training Services		Veterans		Individuals with Disabilities		Older Individuals	
Entered Employment Rate	39.8%	437 1,097	44.4%	716 1,614	23.9%	113 473	38.4%	895 2,330
Employment Retention Rate	73.8%	118 160	78.4%	602 768	77.2%	71 92	78.7%	841 1,068
Average Earnings	\$7,982.6	941,949 118	\$13,385.5	8,058,092 602	\$8,808.0	625,368 71	\$12,373.5	10,406,078 841

### Other Adult Populations

Reported Information	Individuals who Received Training Services		Individuals who only Received Core and Intensive Services	
Entered Employment Rate	38.4%	132 344	46.3%	6,599 14,240
Employment Retention Rate	77.1%	81 105	79.1%	6,177 7,810
Average Earnings	\$11,928.7	966,222 81	\$11,612.7	71,731,818 6,177

### Dislocated Worker Program Results

Reported Information	Negotiated Performance Level (80%)	Actual Performance	Numerator / Denominator
Entered Employment Rate	57.0% (45.6%)	46.8%	5,358 11,448
Employment Retention Rate	80.0% (64.0%)	77.3%	3,064 3,963
Average Earnings	\$12,500.0 (\$10,000.0)	\$12,365.3	37,887,330 3,064

### Dislocated Worker Special Populations

Reported Information	Veterans		Individuals with Disabilities		Older Individuals		Displaced Homemakers	
Entered Employment Rate	46.1%	591 1,282	25.4%	100 394	39.2%	742 1,893	42.1%	989 2,347
Employment Retention Rate	74.5%	339 455	78.0%	39 50	75.6%	473 626	79.2%	433 547
Average Earnings	\$13,111.8	4,444,888 339	\$8,131.5	317,130 39	\$12,256.4	5,797,265 473	\$11,506.8	4,982,450 433

\* Data suppressed for confidentiality purposes

# WIA Annual Report (ETA Form 9091)

## Lane Workforce Partnership PY 2010

### Other Dislocated Workers

Reported Information	Individuals who Recieved Training Services		Individuals who only Received Core and Intensive Services	
Entered Employment Rate	41.8%	152 364	47.0%	5,206 11,084
Employment Retention Rate	76.6%	82 107	77.3%	2,982 3,856
Average Earnings	\$12,459.8	1,021,703 82	\$12,362.7	36,865,627 2,982

### Youth (14-21) Program Results

Reported Information	Negotiated Performance Level (80%)	Actual Performance	Numerator / Denominator
Placement in Employment or Education	70.0% (56.0%)	68.4%	54 79
Attainment of a Degree or Certificate	69.0% (55.2%)	81.6%	40 49
Literacy and Numeracy Gains	31.0% (24.8%)	64.3%	27 42

### Other Reported Information

Reported Information	Adults		Dislocated Workers	
12-Month Employment Retention	80.2%	4,955 6,180	79.1%	1,916 2,422
12-Month Earnings Change	(\$1,974.7)	-12,201,417 6,179	80.0%	22,198,482 27,761,202
Entered Non-Traditional Employment	0.0%	0 6,731	0.0%	0 5,358
Wages At Entered Employment	\$457,590.2	30,800,393 6,731	\$469,828.6	25,173,418 5,358
Employment Related Training	0.0%	0 132	0.0%	0 152

### Participation Levels

Reported Information	Total Participants Served	Total Exiters
Total Adult Customers	24,301	20,379
Total Adult self-service only	0	0
WIA Adult	23,993	20,050
WIA Dislocated Worker	21,372	17,584
Total Youth (14-21)	284	121
Younger Youth (14-18)	221	95
Older Youth (19-21)	63	26
Out-of-School Youth	123	61
In-School Youth	161	60

Performance was Calculated: 9/19/2011 2:18:08 PM

\* Data suppressed for confidentiality purposes

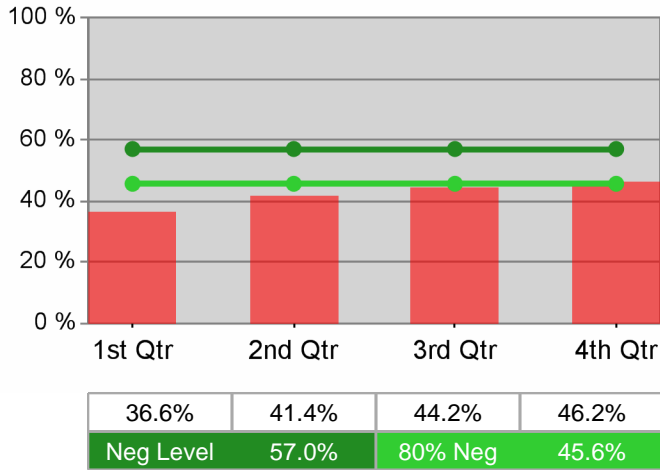
Run Date: 9/19/2011 3:30:10 PM

Page 2 of 2

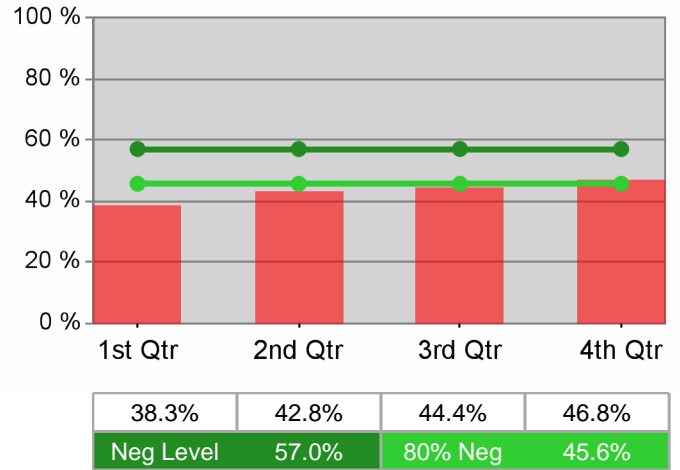
State of Oregon - Department of Community Colleges and Workforce Development

Lane Workforce Partnership  
PY 2010 Year-to-Date

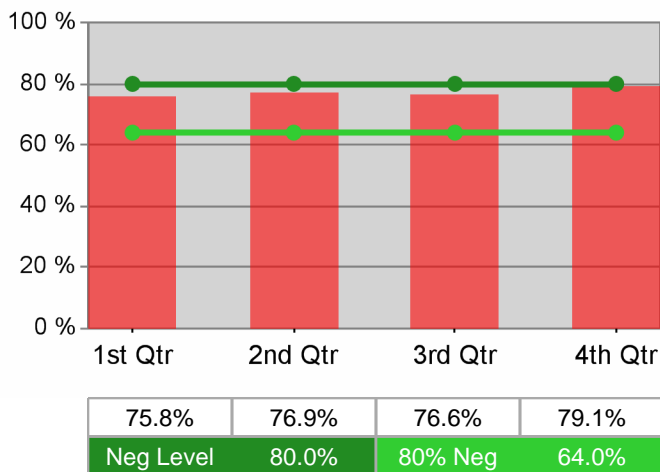
Adult Employment



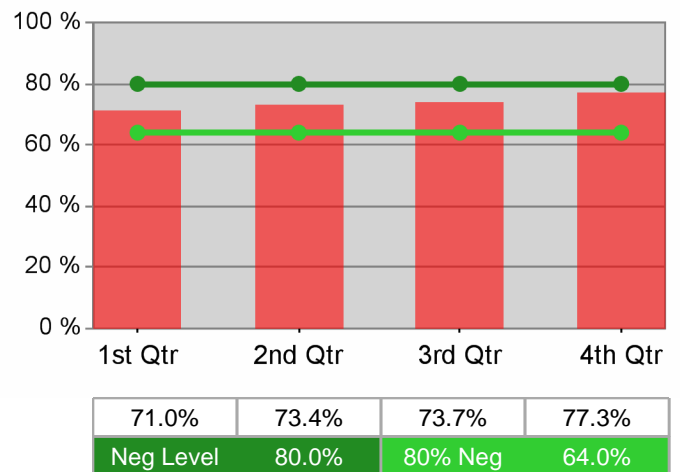
Dislocated Worker Employment



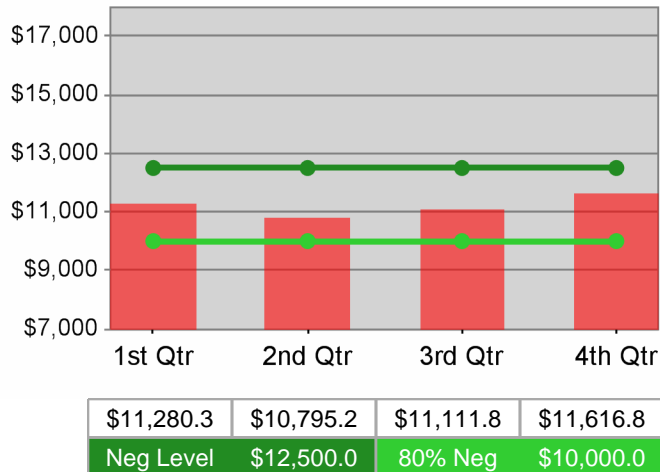
Adult Retention



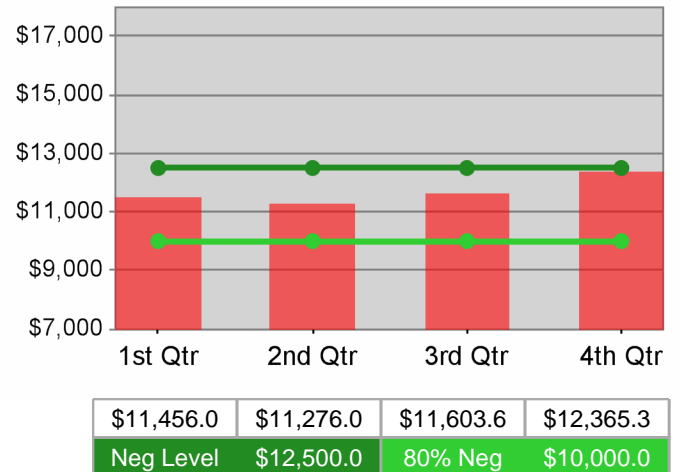
Dislocated Worker Retention



Adult Average Earnings

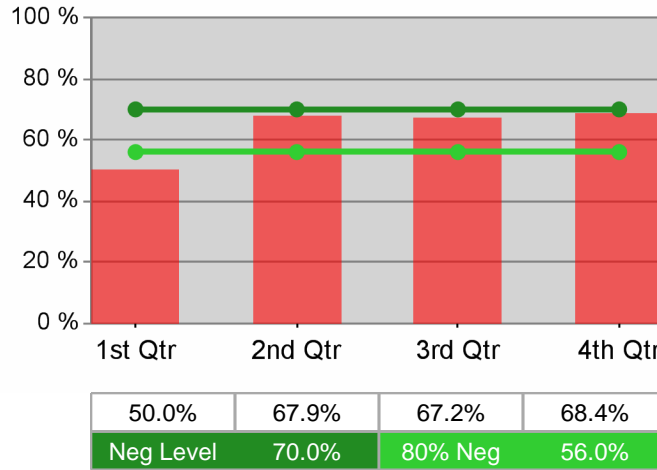


Dislocated Worker Average Earnings

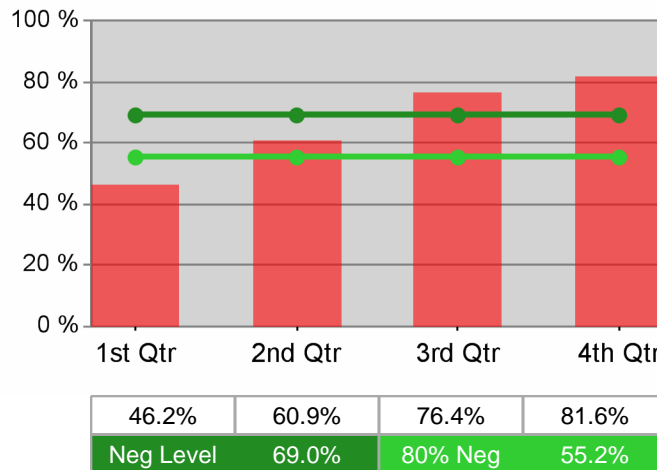


**Lane Workforce Partnership  
PY 2010 Year-to-Date**

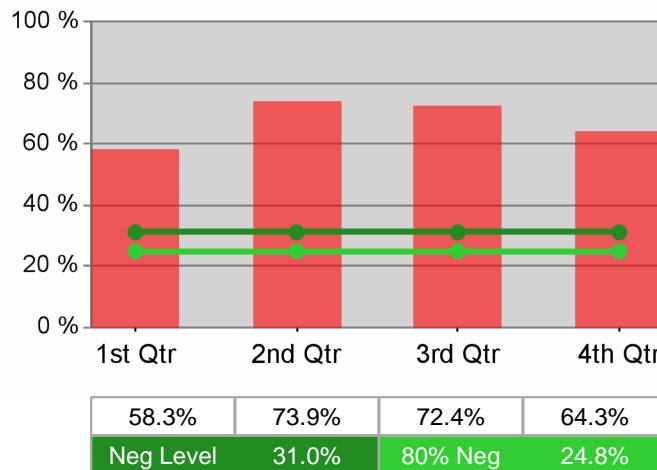
**Youth Employment / Education**



**Youth Degree / Certificate**



**Youth Numeracy / Literacy**



# WIA Annual Report (ETA Form 9091)

## The Job Council PY 2010

### Adult Program Results

Reported Information	Negotiated Performance Level (80%)	Actual Performance	Numerator / Denominator
Entered Employment Rate	57.0% (45.6%)	45.8%	5,105 11,136
Employment Retention Rate	80.0% (64.0%)	76.4%	3,531 4,620
Average Earnings	\$12,500.0 (\$10,000.0)	\$10,787.0	38,088,938 3,531

### Adult Special Populations

Reported Information	Public Assistance Recipients Receiving Intensive or Training Services		Veterans		Individuals with Disabilities		Older Individuals	
Entered Employment Rate	46.9%	535 1,140	39.0%	488 1,252	26.9%	100 372	39.7%	726 1,830
Employment Retention Rate	75.0%	225 300	78.0%	343 440	69.0%	49 71	74.5%	483 648
Average Earnings	\$8,796.6	1,979,245 225	\$12,110.5	4,153,888 343	\$10,296.1	504,508 49	\$11,359.1	5,486,467 483

### Other Adult Populations

Reported Information	Individuals who Received Training Services		Individuals who only Received Core and Intensive Services	
Entered Employment Rate	66.1%	148 224	45.4%	4,957 10,912
Employment Retention Rate	78.9%	60 76	76.4%	3,471 4,544
Average Earnings	\$12,287.9	737,276 60	\$10,761.1	37,351,662 3,471

### Dislocated Worker Program Results

Reported Information	Negotiated Performance Level (80%)	Actual Performance	Numerator / Denominator
Entered Employment Rate	57.0% (45.6%)	47.3%	4,127 8,728
Employment Retention Rate	80.0% (64.0%)	75.7%	1,788 2,362
Average Earnings	\$12,500.0 (\$10,000.0)	\$11,417.8	20,414,977 1,788

### Dislocated Worker Special Populations

Reported Information	Veterans		Individuals with Disabilities		Older Individuals		Displaced Homemakers	
Entered Employment Rate	41.2%	421 1,023	29.1%	87 299	41.0%	616 1,503	45.1%	916 2,033
Employment Retention Rate	77.7%	213 274	66.7%	34 51	74.9%	266 355	76.0%	301 396
Average Earnings	\$12,825.2	2,731,777 213	\$9,521.4	323,729 34	\$11,482.2	3,054,274 266	\$10,294.2	3,098,560 301

\* Data suppressed for confidentiality purposes

# WIA Annual Report (ETA Form 9091)

## The Job Council PY 2010

### Other Dislocated Workers

Reported Information	Individuals who Recieved Training Services		Individuals who only Received Core and Intensive Services	
Entered Employment Rate	66.1%	146 221	46.8%	3,981 8,507
Employment Retention Rate	84.0%	63 75	75.4%	1,725 2,287
Average Earnings	\$13,544.5	853,304 63	\$11,340.1	19,561,673 1,725

### Youth (14-21) Program Results

Reported Information	Negotiated Performance Level (80%)	Actual Performance	Numerator / Denominator
Placement in Employment or Education	70.0% (56.0%)	60.6%	80 132
Attainment of a Degree or Certificate	69.0% (55.2%)	50.0%	42 84
Literacy and Numeracy Gains	31.0% (24.8%)	44.3%	54 122

### Other Reported Information

Reported Information	Adults		Dislocated Workers	
12-Month Employment Retention	77.2%	2,932 3,798	72.7%	1,040 1,430
12-Month Earnings Change	(\$862.1)	-3,274,412 3,798	88.9%	10,807,775 12,159,127
Entered Non-Traditional Employment	0.0%	0 5,105	0.0%	0 4,127
Wages At Entered Employment	\$401,111.8	20,472,744 5,104	\$411,906.6	16,995,267 4,126
Employment Related Training	0.0%	0 148	0.0%	0 146

### Participation Levels

Reported Information	Total Participants Served	Total Exiters
Total Adult Customers	18,611	14,888
Total Adult self-service only	0	0
WIA Adult	18,465	14,738
WIA Dislocated Worker	16,476	13,056
Total Youth (14-21)	319	182
Younger Youth (14-18)	160	91
Older Youth (19-21)	159	91
Out-of-School Youth	271	161
In-School Youth	48	21

Performance was Calculated: 9/19/2011 2:20:16 PM

\* Data suppressed for confidentiality purposes

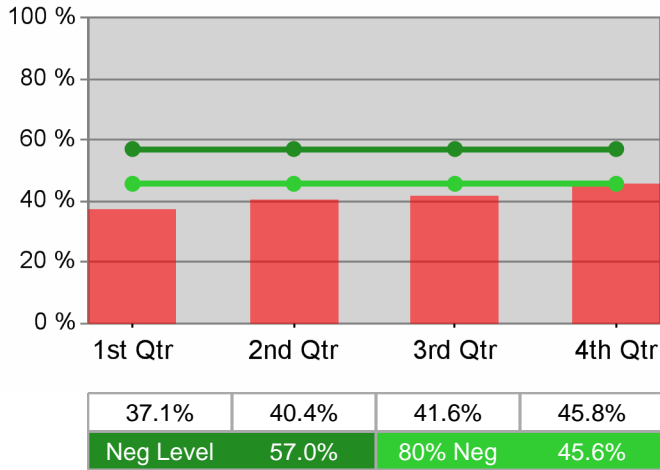
Run Date: 9/19/2011 3:30:11 PM

Page 2 of 2

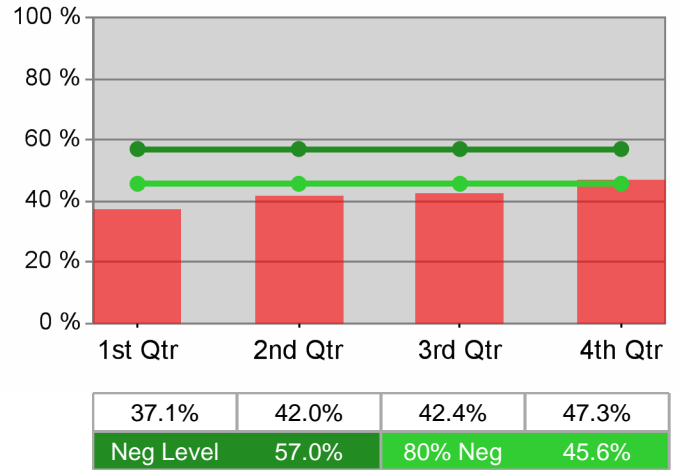
# State of Oregon - Department of Community Colleges and Workforce Development

## The Job Council PY 2010 Year-to-Date

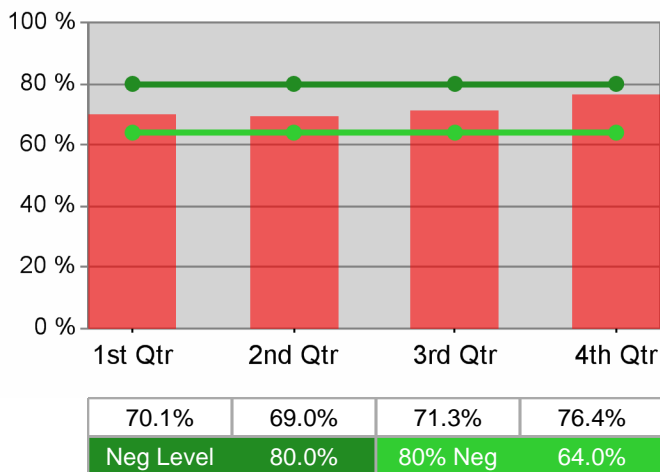
### Adult Employment



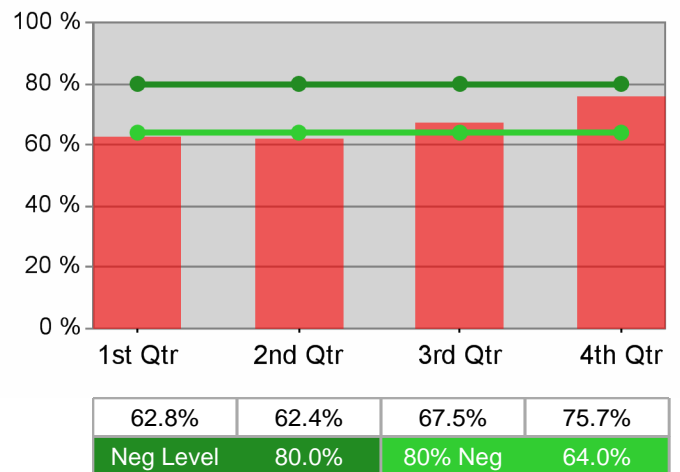
### Dislocated Worker Employment



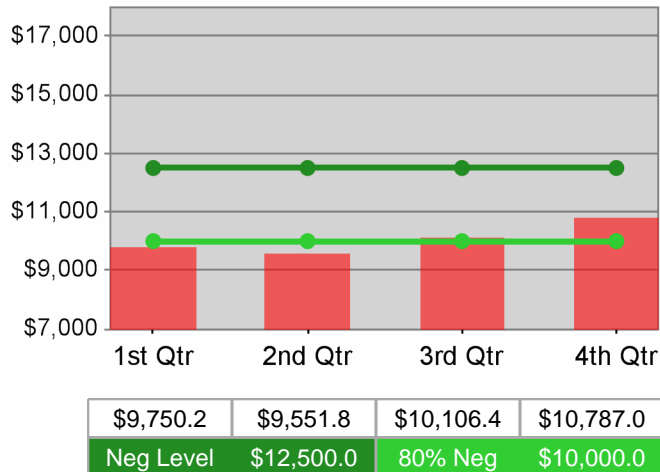
### Adult Retention



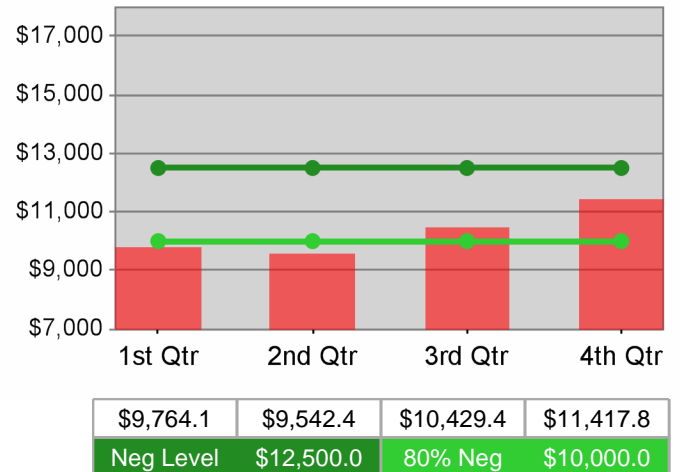
### Dislocated Worker Retention



### Adult Average Earnings

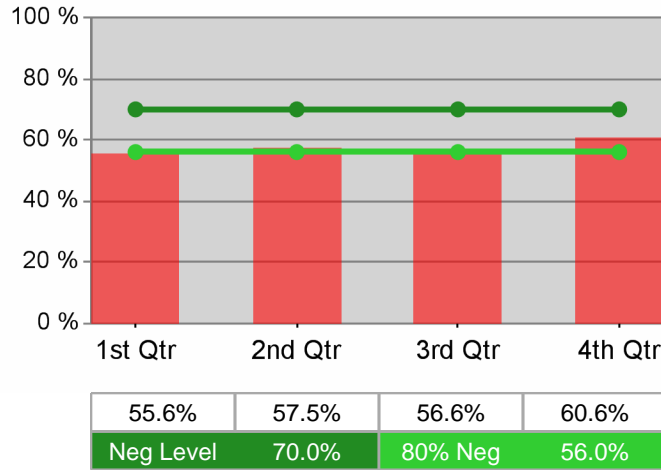


### Dislocated Worker Average Earnings

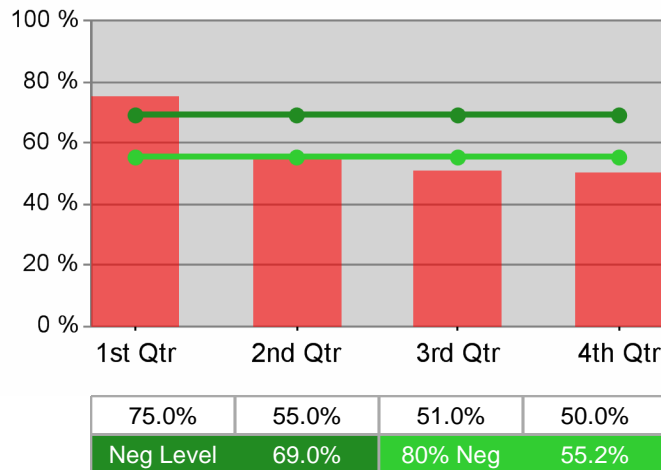


**The Job Council  
PY 2010 Year-to-Date**

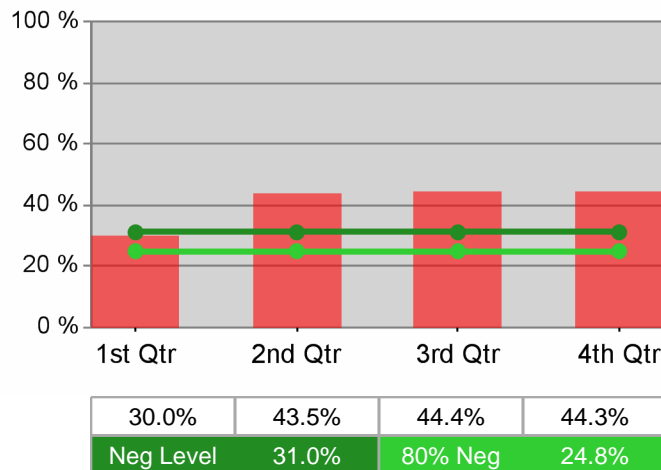
**Youth Employment / Education**



**Youth Degree / Certificate**



**Youth Numeracy / Literacy**





# WIA Annual Report (ETA Form 9091)

## Workforce Investment Council of Clackamas County PY 2010

### Adult Program Results

Reported Information	Negotiated Performance Level (80%)	Actual Performance	Numerator / Denominator
Entered Employment Rate	57.0% (45.6%)	50.5%	4,187 8,291
Employment Retention Rate	80.0% (64.0%)	83.2%	3,628 4,362
Average Earnings	\$12,500.0 (\$10,000.0)	\$16,194.7	58,754,394 3,628

### Adult Special Populations

Reported Information	Public Assistance Recipients Receiving Intensive or Training Services		Veterans		Individuals with Disabilities		Older Individuals	
Entered Employment Rate	45.5%	745 1,636	44.6%	350 784	34.5%	122 354	43.2%	674 1,560
Employment Retention Rate	78.0%	444 569	83.6%	321 384	71.7%	86 120	81.9%	569 695
Average Earnings	\$10,468.7	4,648,111 444	\$17,851.0	5,730,176 321	\$12,405.8	1,066,902 86	\$16,955.4	9,647,636 569

### Other Adult Populations

Reported Information	Individuals who Received Training Services		Individuals who only Received Core and Intensive Services	
Entered Employment Rate	52.1%	177 340	50.4%	4,010 7,951
Employment Retention Rate	85.5%	165 193	83.1%	3,463 4,169
Average Earnings	\$14,816.7	2,444,749 165	\$16,260.4	56,309,645 3,463

### Dislocated Worker Program Results

Reported Information	Negotiated Performance Level (80%)	Actual Performance	Numerator / Denominator
Entered Employment Rate	57.0% (45.6%)	50.6%	4,026 7,961
Employment Retention Rate	80.0% (64.0%)	82.9%	3,282 3,959
Average Earnings	\$12,500.0 (\$10,000.0)	\$16,445.5	53,974,132 3,282

### Dislocated Worker Special Populations

Reported Information	Veterans		Individuals with Disabilities		Older Individuals		Displaced Homemakers	
Entered Employment Rate	44.3%	341 770	33.7%	115 341	43.0%	659 1,533	48.0%	980 2,043
Employment Retention Rate	83.2%	293 352	70.9%	78 110	81.4%	529 650	82.2%	702 854
Average Earnings	\$17,767.5	5,205,864 293	\$12,683.8	989,336 78	\$17,312.0	9,158,025 529	\$12,504.5	8,778,161 702

\* Data suppressed for confidentiality purposes

# WIA Annual Report (ETA Form 9091)

## Workforce Investment Council of Clackamas County PY 2010

### Other Dislocated Workers

Reported Information	Individuals who Recieved Training Services		Individuals who only Received Core and Intensive Services	
Entered Employment Rate	52.4%	174 332	50.5%	3,852 7,629
Employment Retention Rate	83.5%	142 170	82.9%	3,140 3,789
Average Earnings	\$15,530.5	2,205,334 142	\$16,486.9	51,768,798 3,140

### Youth (14-21) Program Results

Reported Information	Negotiated Performance Level (80%)	Actual Performance	Numerator / Denominator
Placement in Employment or Education	70.0% (56.0%)	69.5%	89 128
Attainment of a Degree or Certificate	69.0% (55.2%)	78.0%	92 118
Literacy and Numeracy Gains	31.0% (24.8%)	32.9%	24 73

### Other Reported Information

Reported Information	Adults		Dislocated Workers	
12-Month Employment Retention	81.9%	3,189 3,892	82.0%	2,815 3,433
12-Month Earnings Change	(\$3,919.7)	-15,255,613 3,892	76.5%	46,072,855 60,227,824
Entered Non-Traditional Employment	0.0%	0 4,187	0.0%	0 4,026
Wages At Entered Employment	\$701,680.4	29,379,360 4,187	\$707,751.2	28,494,062 4,026
Employment Related Training	0.0%	0 177	0.0%	0 174

### Participation Levels

Reported Information	Total Participants Served	Total Exiters
Total Adult Customers	16,349	11,330
Total Adult self-service only	0	0
WIA Adult	16,338	11,319
WIA Dislocated Worker	14,999	10,412
Total Youth (14-21)	419	175
Younger Youth (14-18)	353	145
Older Youth (19-21)	66	30
Out-of-School Youth	176	87
In-School Youth	243	88

Performance was Calculated: 9/19/2011 2:28:24 PM

\* Data suppressed for confidentiality purposes

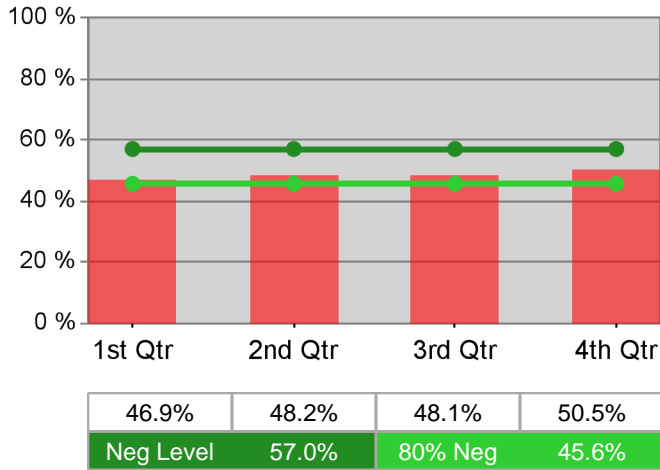
Run Date: 9/19/2011 3:30:17 PM

Page 2 of 2

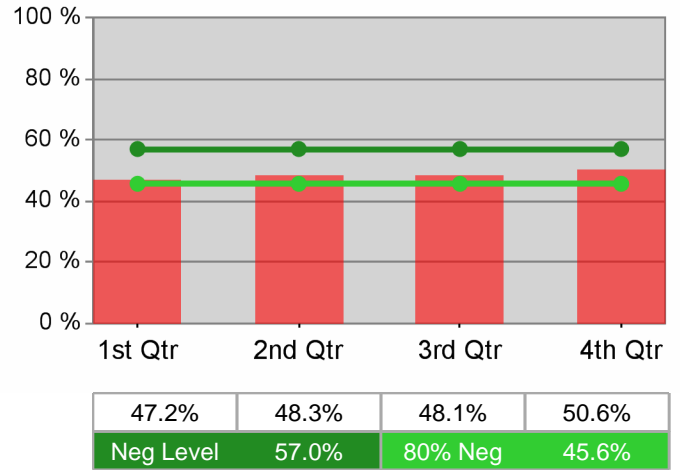
State of Oregon - Department of Community Colleges and Workforce Development

Workforce Investment Council of Clackamas County  
PY 2010 Year-to-Date

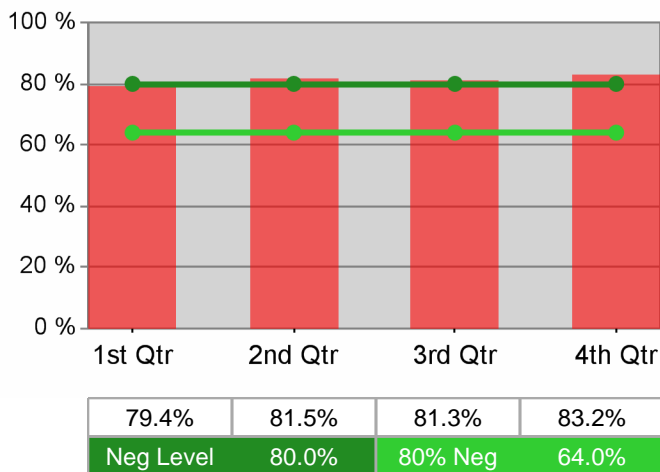
Adult Employment



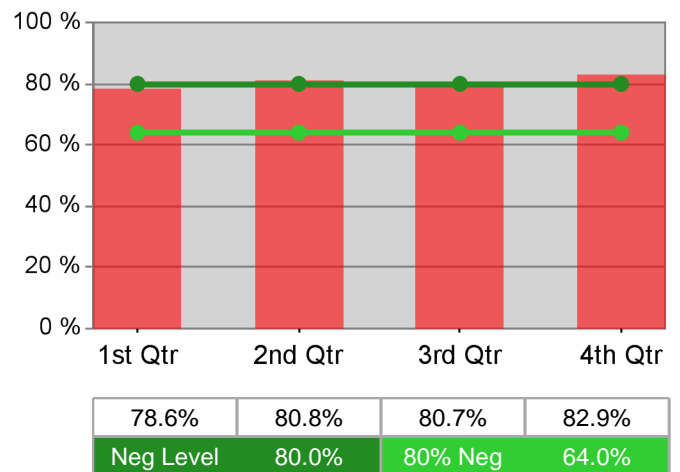
Dislocated Worker Employment



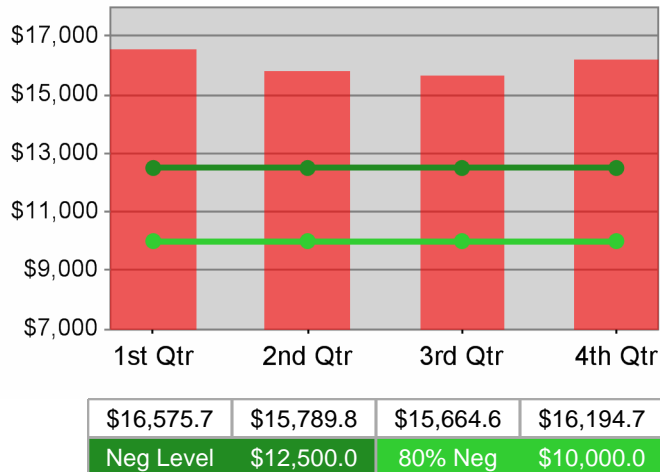
Adult Retention



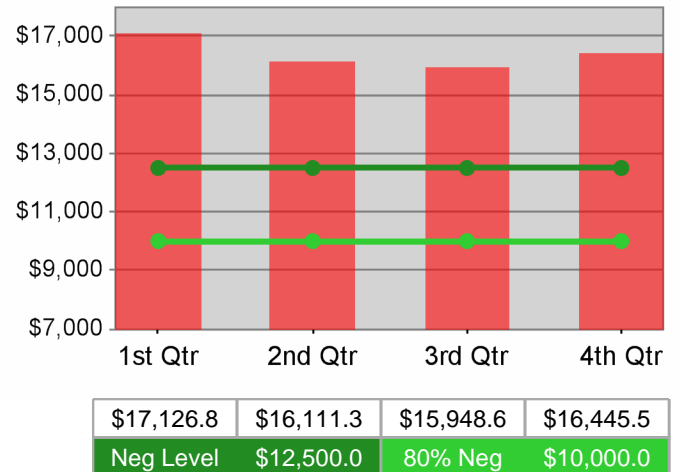
Dislocated Worker Retention



Adult Average Earnings

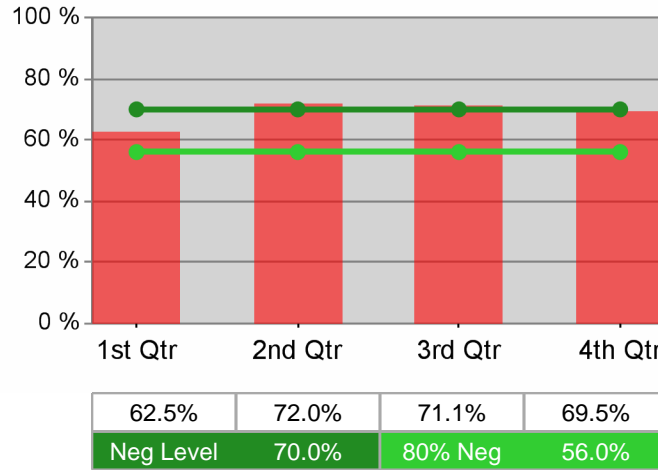


Dislocated Worker Average Earnings

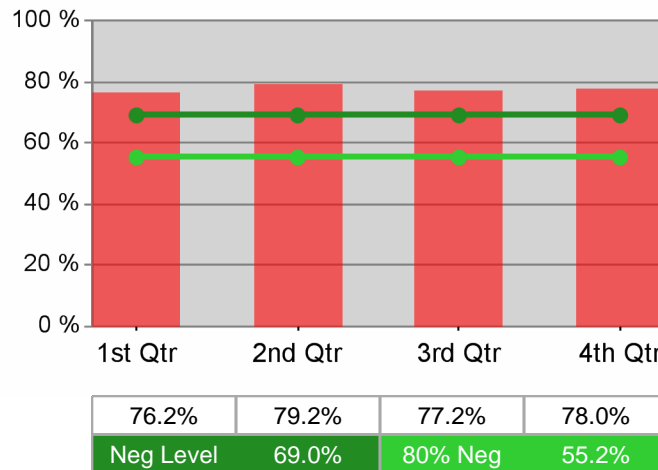


**Workforce Investment Council of Clackamas County  
PY 2010 Year-to-Date**

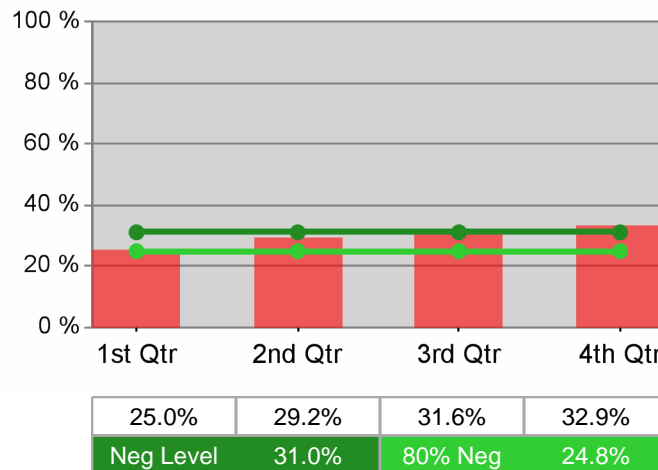
**Youth Employment / Education**



**Youth Degree / Certificate**



**Youth Numeracy / Literacy**



# WIA Annual Report (ETA Form 9091)

## The Oregon Consortium/Workforce Alliance PY 2010

### Adult Program Results

Reported Information	Negotiated Performance Level (80%)	Actual Performance	Numerator / Denominator
Entered Employment Rate	57.0% (45.6%)	49.4%	19,300 39,062
Employment Retention Rate	80.0% (64.0%)	78.0%	17,327 22,228
Average Earnings	\$12,500.0 (\$10,000.0)	\$11,464.9	198,641,489 17,326

### Adult Special Populations

Reported Information	Public Assistance Recipients Receiving Intensive or Training Services		Veterans		Individuals with Disabilities		Older Individuals	
Entered Employment Rate	46.4%	554 1,193	44.0%	1,762 4,009	25.8%	320 1,242	40.4%	2,324 5,755
Employment Retention Rate	78.4%	262 334	76.3%	1,461 1,914	76.0%	200 263	79.8%	1,995 2,500
Average Earnings	\$10,113.7	2,649,781 262	\$13,694.1	20,007,045 1,461	\$9,303.7	1,860,735 200	\$12,613.9	25,164,680 1,995

### Other Adult Populations

Reported Information	Individuals who Received Training Services		Individuals who only Received Core and Intensive Services	
Entered Employment Rate	62.3%	317 509	49.2%	18,983 38,553
Employment Retention Rate	86.1%	211 245	77.9%	17,116 21,983
Average Earnings	\$14,169.0	2,989,669 211	\$11,431.6	195,651,820 17,115

### Dislocated Worker Program Results

Reported Information	Negotiated Performance Level (80%)	Actual Performance	Numerator / Denominator
Entered Employment Rate	57.0% (45.6%)	50.8%	14,834 29,207
Employment Retention Rate	80.0% (64.0%)	77.4%	8,095 10,462
Average Earnings	\$12,500.0 (\$10,000.0)	\$12,266.3	99,283,686 8,094

### Dislocated Worker Special Populations

Reported Information	Veterans		Individuals with Disabilities		Older Individuals		Displaced Homemakers	
Entered Employment Rate	45.5%	1,414 3,106	27.9%	269 963	42.4%	1,911 4,509	45.8%	2,869 6,258
Employment Retention Rate	74.9%	837 1,117	75.7%	109 144	78.2%	1,148 1,468	75.8%	1,174 1,548
Average Earnings	\$13,492.9	11,293,532 837	\$11,338.7	1,235,920 109	\$12,886.3	14,793,508 1,148	\$10,657.8	12,512,226 1,174

\* Data suppressed for confidentiality purposes

# WIA Annual Report (ETA Form 9091)

## The Oregon Consortium/Workforce Alliance PY 2010

### Other Dislocated Workers

Reported Information	Individuals who Recieved Training Services		Individuals who only Received Core and Intensive Services	
Entered Employment Rate	61.1%	391 640	50.6%	14,443 28,567
Employment Retention Rate	83.0%	253 305	77.2%	7,842 10,157
Average Earnings	\$14,115.1	3,556,994 252	\$12,206.9	95,726,692 7,842

### Youth (14-21) Program Results

Reported Information	Negotiated Performance Level (80%)	Actual Performance	Numerator / Denominator
Placement in Employment or Education	70.0% (56.0%)	65.9%	244 370
Attainment of a Degree or Certificate	69.0% (55.2%)	68.0%	251 369
Literacy and Numeracy Gains	31.0% (24.8%)	57.3%	67 117

### Other Reported Information

Reported Information	Adults		Dislocated Workers	
12-Month Employment Retention	78.6%	14,927 19,001	75.3%	5,470 7,264
12-Month Earnings Change	(\$909.6)	-17,281,727 18,999	81.5%	62,654,118 76,860,151
Entered Non-Traditional Employment	0.0%	0 19,300	0.0%	0 14,834
Wages At Entered Employment	\$437,000.3	84,319,208 19,295	\$455,585.0	67,554,139 14,828
Employment Related Training	0.0%	0 317	0.0%	0 391

### Participation Levels

Reported Information	Total Participants Served	Total Exiters
Total Adult Customers	65,866	55,074
Total Adult self-service only	0	0
WIA Adult	65,068	54,502
WIA Dislocated Worker	56,190	45,630
Total Youth (14-21)	780	453
Younger Youth (14-18)	582	349
Older Youth (19-21)	198	104
Out-of-School Youth	319	202
In-School Youth	461	251

Performance was Calculated: 9/19/2011 2:30:37 PM

\* Data suppressed for confidentiality purposes

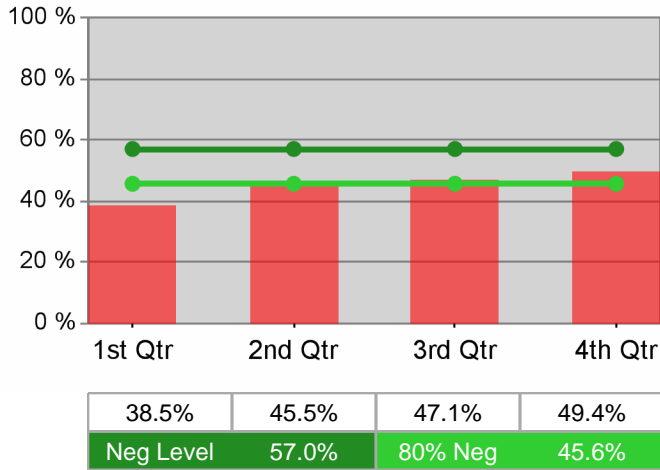
Run Date: 9/19/2011 3:30:18 PM

Page 2 of 2

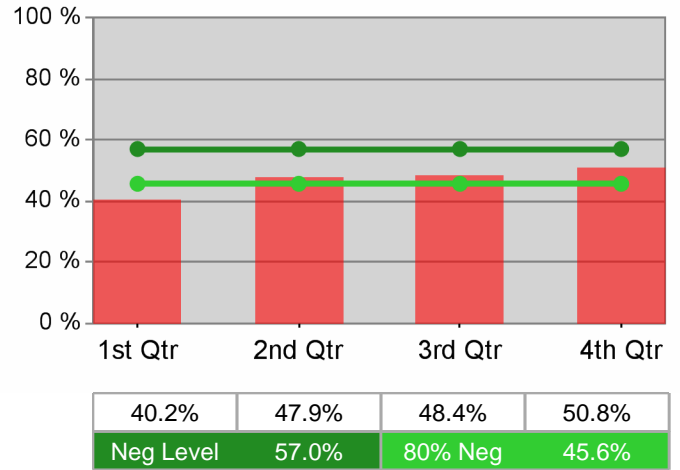
State of Oregon - Department of Community Colleges and Workforce Development

The Oregon Consortium/Workforce Alliance  
PY 2010 Year-to-Date

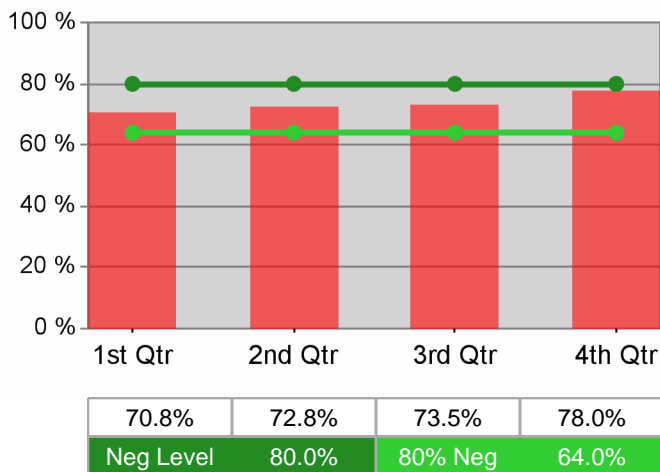
Adult Employment



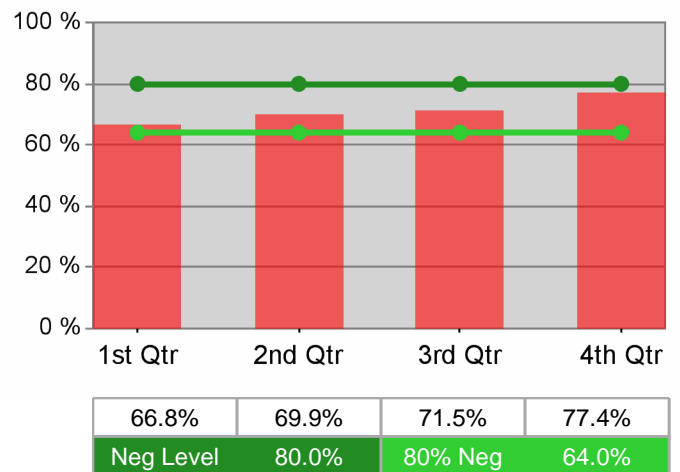
Dislocated Worker Employment



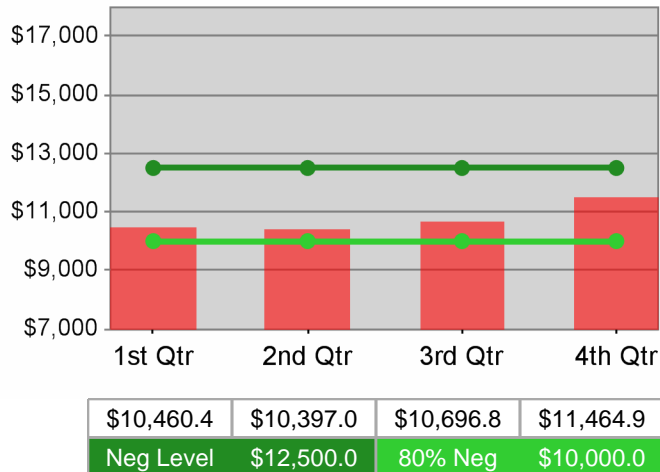
Adult Retention



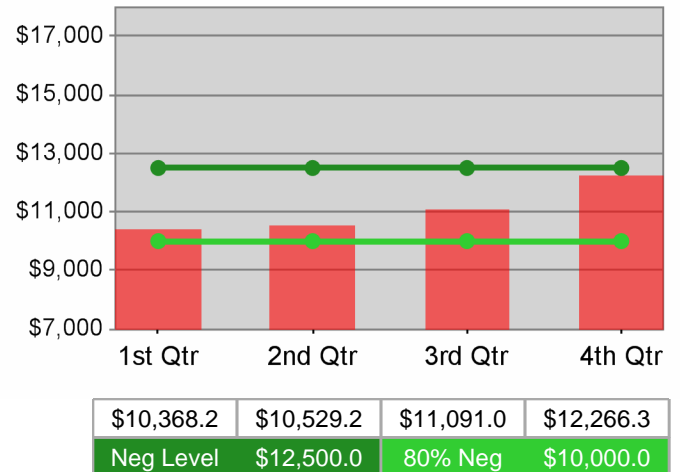
Dislocated Worker Retention



Adult Average Earnings

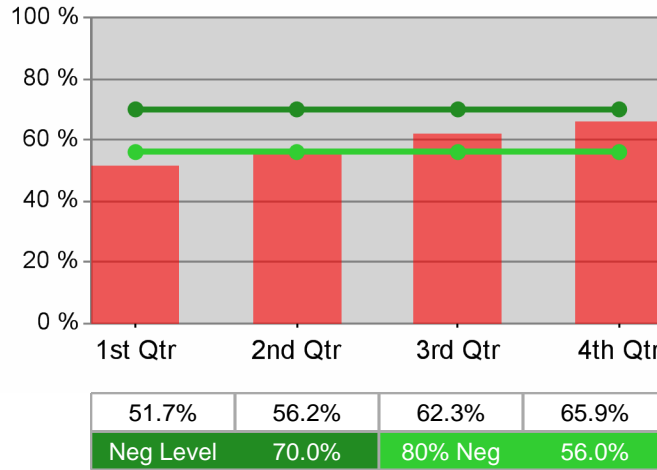


Dislocated Worker Average Earnings

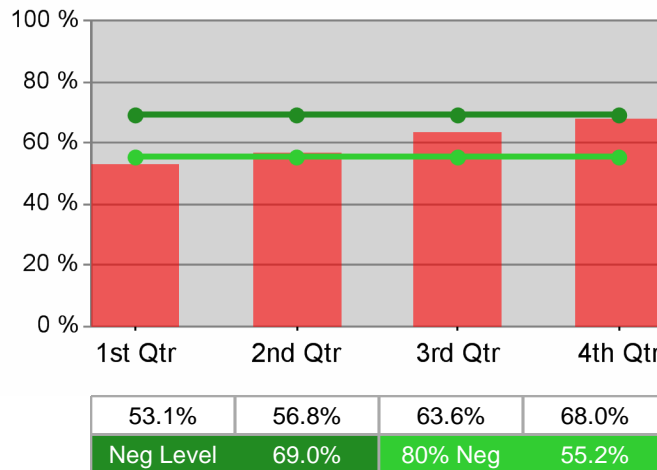


**The Oregon Consortium/Workforce Alliance  
PY 2010 Year-to-Date**

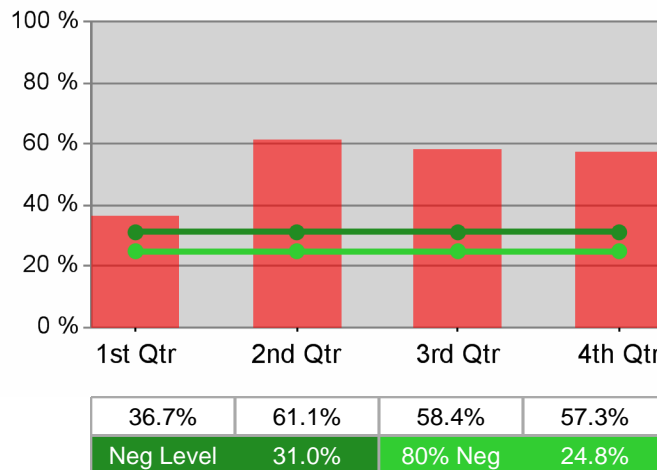
**Youth Employment / Education**



**Youth Degree / Certificate**



**Youth Numeracy / Literacy**





# WIA Annual Report (ETA Form 9091)

## The Oregon Consortium/Workforce Alliance - Management Training Corp PY 2010

### Adult Program Results

Reported Information	Negotiated Performance Level (80%)	Actual Performance	Numerator / Denominator
Entered Employment Rate	57.0% (45.6%)	48.4%	2,406 4,966
Employment Retention Rate	80.0% (64.0%)	78.1%	1,931 2,474
Average Earnings	\$12,500.0 (\$10,000.0)	\$12,479.5	24,098,005 1,931

### Adult Special Populations

Reported Information	Public Assistance Recipients Receiving Intensive or Training Services		Veterans		Individuals with Disabilities		Older Individuals	
Entered Employment Rate	42.7%	189 443	46.3%	278 601	29.0%	49 169	40.6%	330 812
Employment Retention Rate	72.3%	47 65	77.0%	211 274	78.8%	26 33	77.8%	263 338
Average Earnings	\$10,006.8	470,320 47	\$15,365.4	3,242,103 211	\$10,062.3	261,620 26	\$14,246.5	3,746,833 263

### Other Adult Populations

Reported Information	Individuals who Received Training Services		Individuals who only Received Core and Intensive Services	
Entered Employment Rate	73.0%	46 63	48.1%	2,360 4,903
Employment Retention Rate	90.5%	19 21	77.9%	1,912 2,453
Average Earnings	\$18,404.1	349,678 19	\$12,420.7	23,748,327 1,912

### Dislocated Worker Program Results

Reported Information	Negotiated Performance Level (80%)	Actual Performance	Numerator / Denominator
Entered Employment Rate	57.0% (45.6%)	49.4%	1,862 3,767
Employment Retention Rate	80.0% (64.0%)	78.2%	1,014 1,296
Average Earnings	\$12,500.0 (\$10,000.0)	\$13,140.5	13,324,430 1,014

### Dislocated Worker Special Populations

Reported Information	Veterans		Individuals with Disabilities		Older Individuals		Displaced Homemakers	
Entered Employment Rate	46.9%	227 484	32.3%	43 133	42.4%	268 632	44.5%	378 849
Employment Retention Rate	83.2%	144 173	75.0%	18 24	82.0%	173 211	72.8%	155 213
Average Earnings	\$14,036.6	2,021,277 144	\$11,808.5	212,553 18	\$13,687.8	2,367,991 173	\$10,575.5	1,639,196 155

\* Data suppressed for confidentiality purposes

# WIA Annual Report (ETA Form 9091)

## The Oregon Consortium/Workforce Alliance - Management Training Corp PY 2010

### Other Dislocated Workers

Reported Information	Individuals who Recieved Training Services		Individuals who only Received Core and Intensive Services	
Entered Employment Rate	73.5%	50 68	49.0%	1,812 3,699
Employment Retention Rate	85.7%	30 35	78.0%	984 1,261
Average Earnings	\$19,080.1	572,404 30	\$12,959.4	12,752,026 984

### Youth (14-21) Program Results

Reported Information	Negotiated Performance Level (80%)	Actual Performance	Numerator / Denominator
Placement in Employment or Education	70.0% (56.0%)	41.8%	23 55
Attainment of a Degree or Certificate	69.0% (55.2%)	43.6%	24 55
Literacy and Numeracy Gains	31.0% (24.8%)	39.3%	11 28

### Other Reported Information

Reported Information	Adults		Dislocated Workers	
12-Month Employment Retention	78.0%	1,454 1,864	77.2%	585 758
12-Month Earnings Change	(\$1,513.1)	-2,820,464 1,864	81.9%	7,191,306 8,778,687
Entered Non-Traditional Employment	0.0%	0 2,406	0.0%	0 1,862
Wages At Entered Employment	\$470,918.5	11,330,299 2,406	\$497,988.6	9,272,547 1,862
Employment Related Training	0.0%	0 46	0.0%	0 50

### Participation Levels

Reported Information	Total Participants Served	Total Exiters
Total Adult Customers	8,008	6,872
Total Adult self-service only	0	0
WIA Adult	7,943	6,822
WIA Dislocated Worker	6,938	5,779
Total Youth (14-21)	68	76
Younger Youth (14-18)	41	53
Older Youth (19-21)	27	23
Out-of-School Youth	36	38
In-School Youth	32	38

Performance was Calculated: 9/19/2011 2:32:54 PM

\* Data suppressed for confidentiality purposes

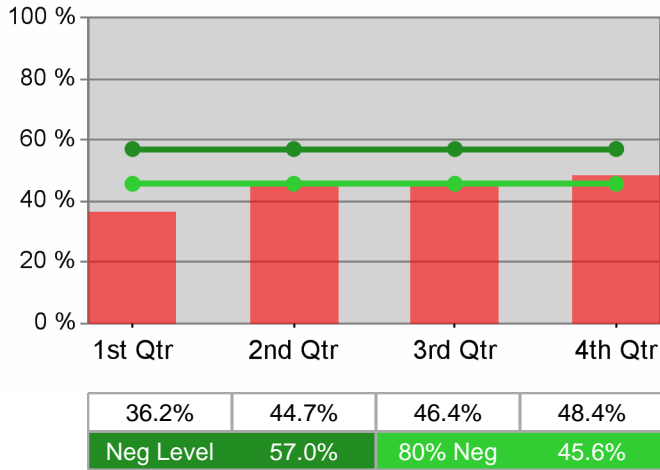
Run Date: 9/19/2011 3:30:19 PM

Page 2 of 2

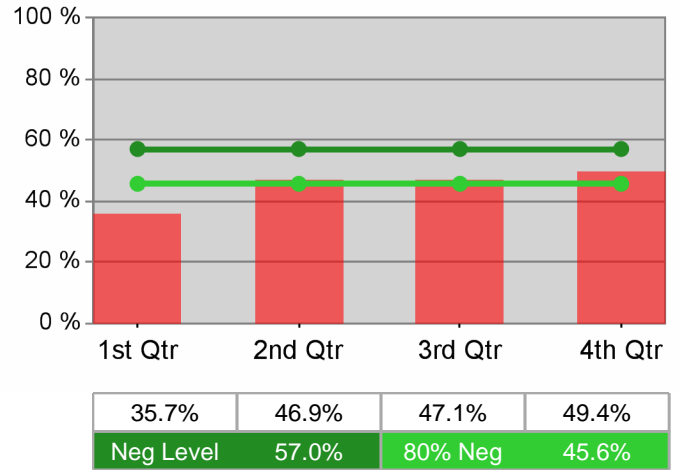
State of Oregon - Department of Community Colleges and Workforce Development

The Oregon Consortium/Workforce Alliance - Management Training Corp  
PY 2010 Year-to-Date

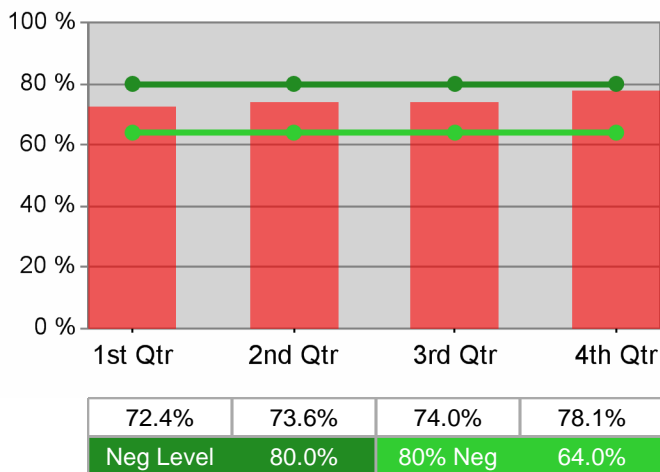
Adult Employment



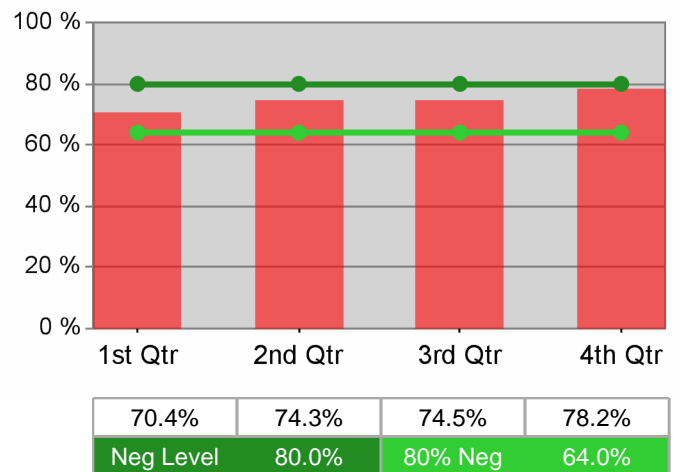
Dislocated Worker Employment



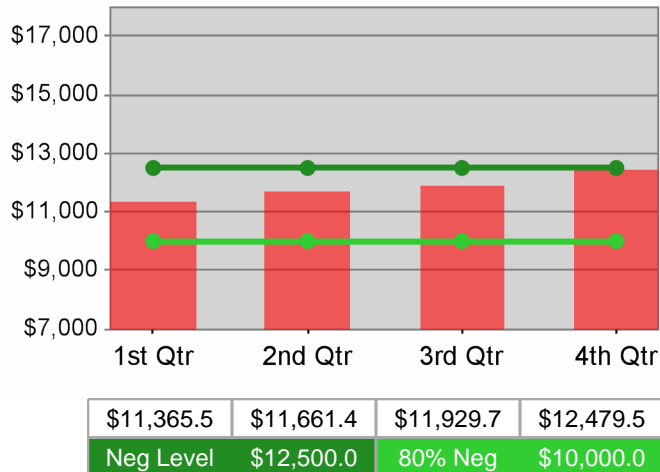
Adult Retention



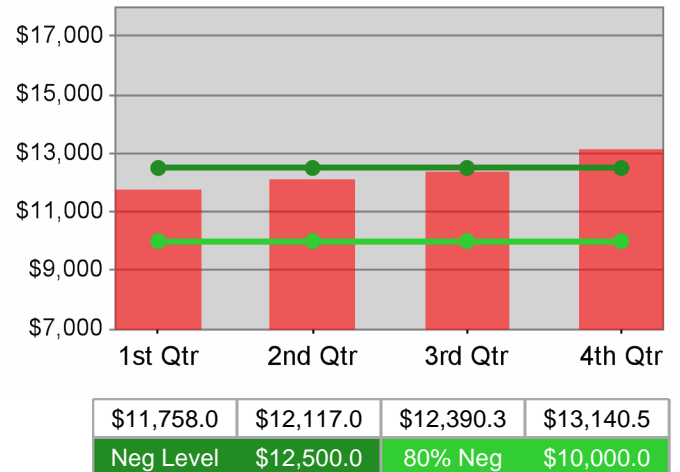
Dislocated Worker Retention



Adult Average Earnings

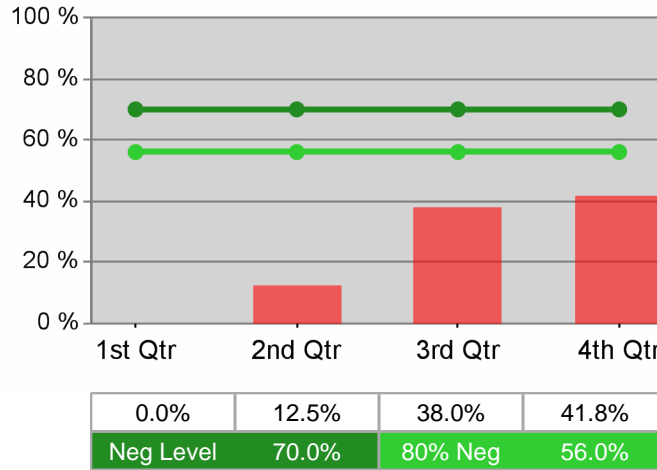


Dislocated Worker Average Earnings

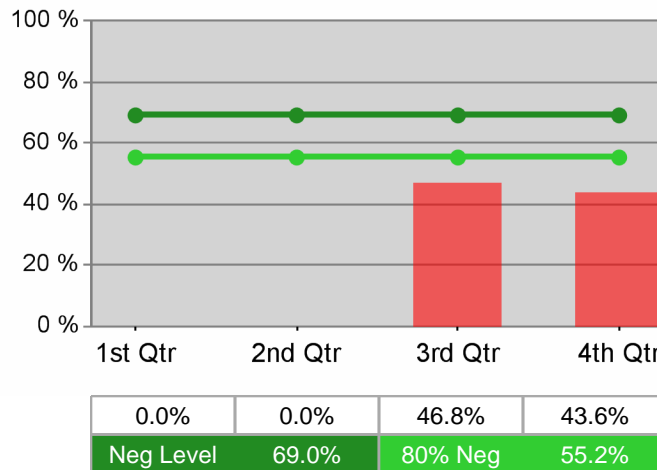


The Oregon Consortium/Workforce Alliance - Management Training Corp  
PY 2010 Year-to-Date

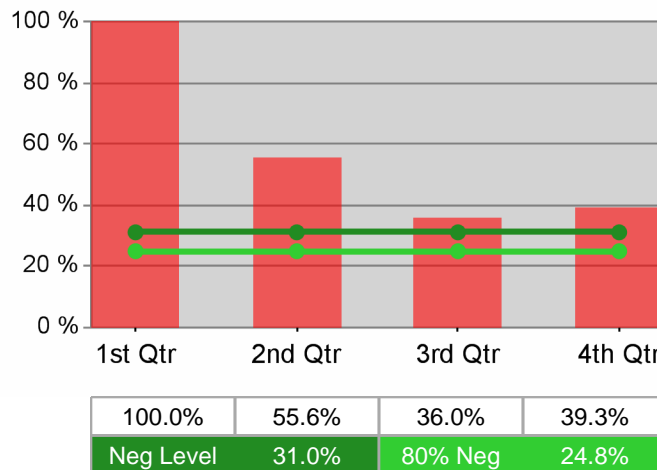
Youth Employment / Education



Youth Degree / Certificate



Youth Numeracy / Literacy



# WIA Annual Report (ETA Form 9091)

## The Oregon Consortium/Workforce Alliance - Umpqua Training & Employment PY 2010

### Adult Program Results

Reported Information	Negotiated Performance Level (80%)	Actual Performance	Numerator / Denominator
Entered Employment Rate	57.0% (45.6%)	43.9%	1,911 4,350
Employment Retention Rate	80.0% (64.0%)	77.6%	1,753 2,258
Average Earnings	\$12,500.0 (\$10,000.0)	\$11,660.9	20,429,841 1,752

### Adult Special Populations

Reported Information	Public Assistance Recipients Receiving Intensive or Training Services		Veterans		Individuals with Disabilities		Older Individuals	
Entered Employment Rate	81.8%	18 22	39.4%	210 533	21.8%	32 147	31.5%	206 655
Employment Retention Rate	84.2%	16 19	74.5%	178 239	77.4%	24 31	78.3%	213 272
Average Earnings	\$12,340.6	197,449 16	\$13,915.9	2,477,034 178	\$10,516.3	252,391 24	\$12,738.4	2,713,280 213

### Other Adult Populations

Reported Information	Individuals who Received Training Services		Individuals who only Received Core and Intensive Services	
Entered Employment Rate	75.0%	45 60	43.5%	1,866 4,290
Employment Retention Rate	87.2%	41 47	77.4%	1,712 2,211
Average Earnings	\$13,886.1	569,329 41	\$11,607.5	19,860,512 1,711

### Dislocated Worker Program Results

Reported Information	Negotiated Performance Level (80%)	Actual Performance	Numerator / Denominator
Entered Employment Rate	57.0% (45.6%)	45.5%	1,511 3,319
Employment Retention Rate	80.0% (64.0%)	77.7%	897 1,154
Average Earnings	\$12,500.0 (\$10,000.0)	\$12,405.1	11,115,010 896

### Dislocated Worker Special Populations

Reported Information	Veterans		Individuals with Disabilities		Older Individuals		Displaced Homemakers	
Entered Employment Rate	39.5%	171 433	24.8%	29 117	33.7%	175 520	42.5%	262 616
Employment Retention Rate	75.9%	107 141	89.5%	17 19	79.5%	124 156	81.2%	108 133
Average Earnings	\$13,640.7	1,459,555 107	\$11,620.8	197,554 17	\$13,827.7	1,714,631 124	\$11,656.4	1,258,896 108

\* Data suppressed for confidentiality purposes

# WIA Annual Report (ETA Form 9091)

## The Oregon Consortium/Workforce Alliance - Umpqua Training & Employment PY 2010

### Other Dislocated Workers

Reported Information	Individuals who Recieved Training Services		Individuals who only Received Core and Intensive Services	
Entered Employment Rate	69.7%	62 89	44.9%	1,449 3,230
Employment Retention Rate	80.8%	42 52	77.6%	855 1,102
Average Earnings	\$13,970.4	572,785 41	\$12,330.1	10,542,225 855

### Youth (14-21) Program Results

Reported Information	Negotiated Performance Level (80%)	Actual Performance	Numerator / Denominator
Placement in Employment or Education	70.0% (56.0%)	84.6%	33 39
Attainment of a Degree or Certificate	69.0% (55.2%)	85.0%	34 40
Literacy and Numeracy Gains	31.0% (24.8%)	55.3%	26 47

### Other Reported Information

Reported Information	Adults		Dislocated Workers	
12-Month Employment Retention	77.3%	1,571 2,033	79.1%	749 947
12-Month Earnings Change	(\$1,245.9)	-2,531,770 2,032	81.7%	8,646,884 10,589,022
Entered Non-Traditional Employment	0.0%	0 1,911	0.0%	0 1,511
Wages At Entered Employment	\$451,222.8	8,618,356 1,910	\$462,833.9	6,988,792 1,510
Employment Related Training	0.0%	0 45	0.0%	0 62

### Participation Levels

Reported Information	Total Participants Served	Total Exiters
Total Adult Customers	7,620	6,012
Total Adult self-service only	0	0
WIA Adult	7,510	5,935
WIA Dislocated Worker	6,704	5,112
Total Youth (14-21)	125	62
Younger Youth (14-18)	54	31
Older Youth (19-21)	71	31
Out-of-School Youth	114	57
In-School Youth	11	*

Performance was Calculated: 9/19/2011 2:35:08 PM

\* Data suppressed for confidentiality purposes

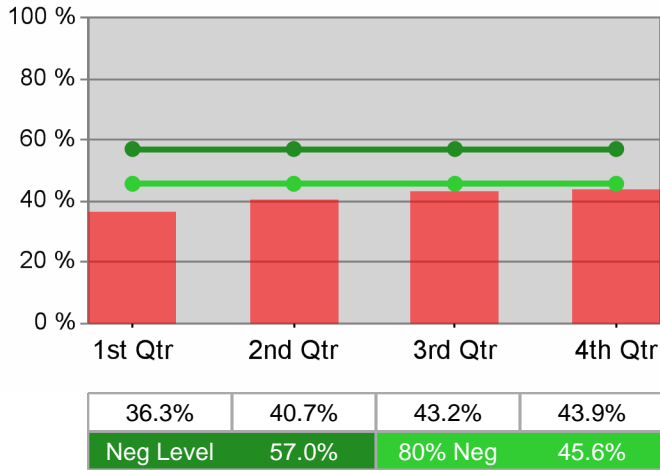
Run Date: 9/19/2011 3:30:21 PM

Page 2 of 2

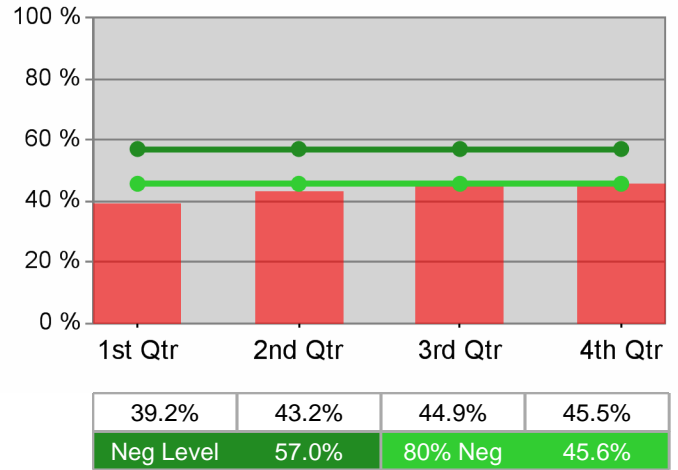
State of Oregon - Department of Community Colleges and Workforce Development

The Oregon Consortium/Workforce Alliance - Umpqua Training & Employment  
PY 2010 Year-to-Date

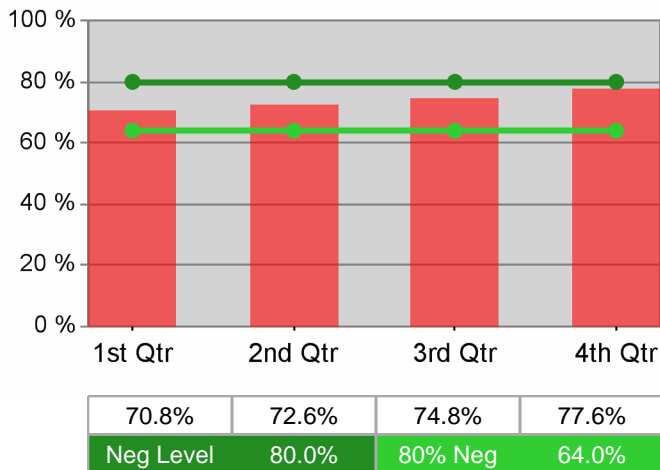
Adult Employment



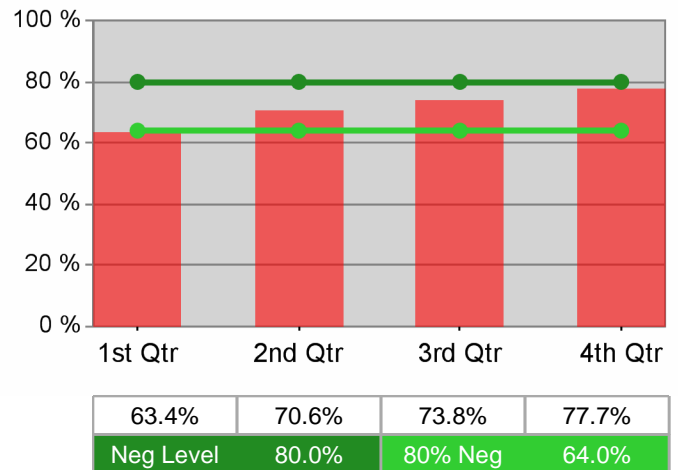
Dislocated Worker Employment



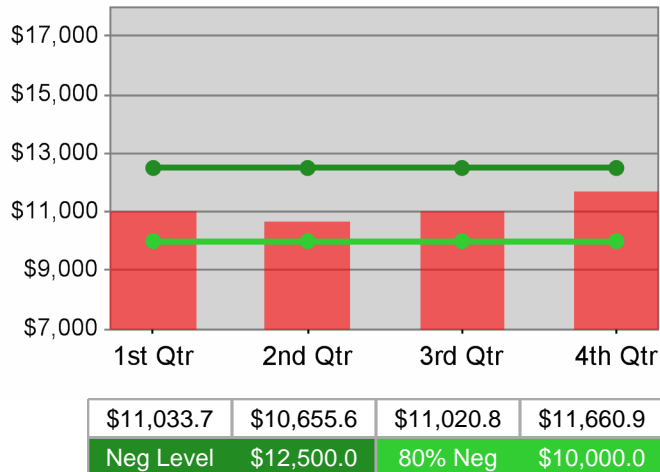
Adult Retention



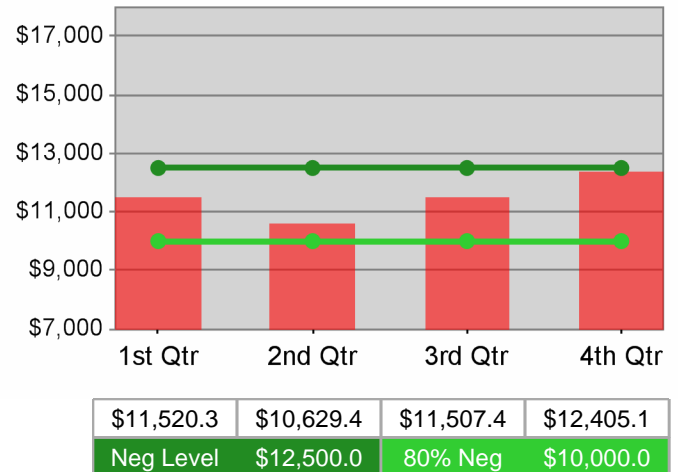
Dislocated Worker Retention



Adult Average Earnings



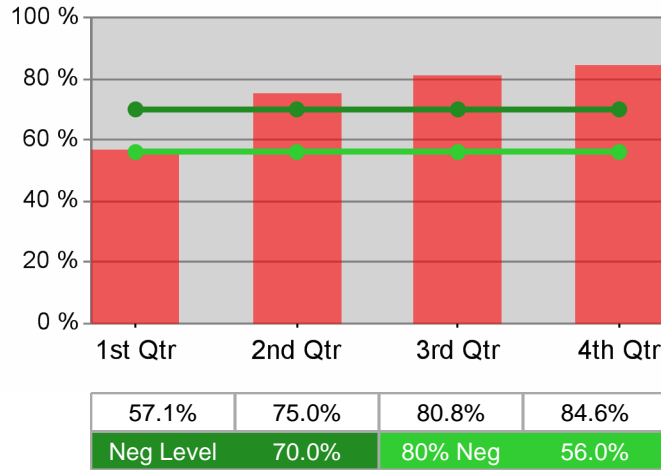
Dislocated Worker Average Earnings



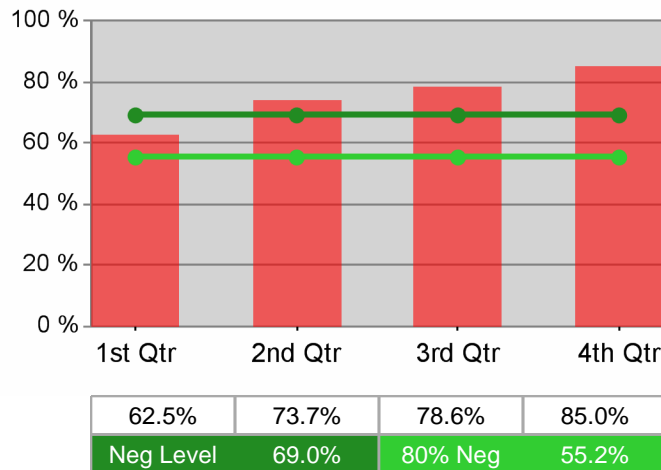
State of Oregon - Department of Community Colleges and Workforce Development

The Oregon Consortium/Workforce Alliance - Umpqua Training & Employment  
PY 2010 Year-to-Date

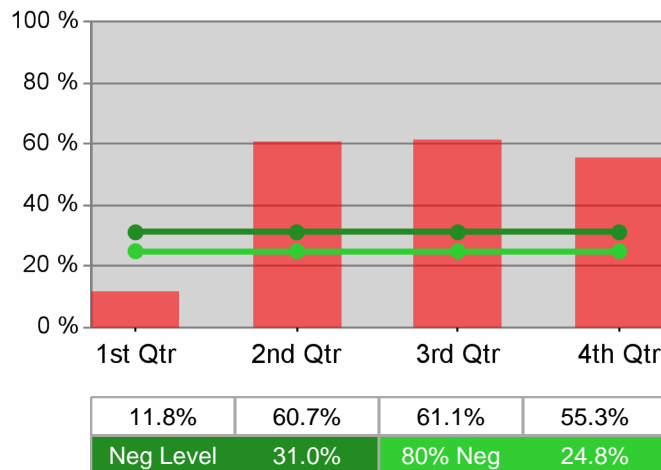
Youth Employment / Education



Youth Degree / Certificate



Youth Numeracy / Literacy





# WIA Annual Report (ETA Form 9091)

## The Oregon Consortium/Workforce Alliance - South Coast Business Employment Corp. PY 2010

### Adult Program Results

Reported Information	Negotiated Performance Level (80%)	Actual Performance	Numerator / Denominator
Entered Employment Rate	57.0% (45.6%)	48.4%	1,868 3,857
Employment Retention Rate	80.0% (64.0%)	77.0%	1,514 1,966
Average Earnings	\$12,500.0 (\$10,000.0)	\$10,083.3	15,266,060 1,514

### Adult Special Populations

Reported Information	Public Assistance Recipients Receiving Intensive or Training Services		Veterans		Individuals with Disabilities		Older Individuals	
Entered Employment Rate	51.6%	32 62	40.3%	173 429	29.8%	42 141	37.0%	202 546
Employment Retention Rate	81.8%	9 11	77.9%	134 172	76.7%	23 30	79.3%	180 227
Average Earnings	\$8,844.6	79,601 9	\$11,730.8	1,571,931 134	\$9,754.3	224,350 23	\$11,680.7	2,102,529 180

### Other Adult Populations

Reported Information	Individuals who Received Training Services		Individuals who only Received Core and Intensive Services	
Entered Employment Rate	60.3%	35 58	48.2%	1,833 3,799
Employment Retention Rate	85.7%	24 28	76.9%	1,490 1,938
Average Earnings	\$13,071.7	313,721 24	\$10,035.1	14,952,339 1,490

### Dislocated Worker Program Results

Reported Information	Negotiated Performance Level (80%)	Actual Performance	Numerator / Denominator
Entered Employment Rate	57.0% (45.6%)	48.8%	1,406 2,879
Employment Retention Rate	80.0% (64.0%)	73.3%	586 800
Average Earnings	\$12,500.0 (\$10,000.0)	\$9,574.6	5,610,707 586

### Dislocated Worker Special Populations

Reported Information	Veterans		Individuals with Disabilities		Older Individuals		Displaced Homemakers	
Entered Employment Rate	38.6%	131 339	26.8%	30 112	36.5%	158 433	44.6%	323 724
Employment Retention Rate	72.2%	52 72	75.0%	9 12	71.9%	69 96	70.1%	108 154
Average Earnings	\$9,434.8	490,609 52	\$16,587.9	149,291 9	\$9,004.1	621,283 69	\$9,653.5	1,042,576 108

\* Data suppressed for confidentiality purposes

# WIA Annual Report (ETA Form 9091)

## The Oregon Consortium/Workforce Alliance - South Coast Business Employment Corp. PY 2010

### Other Dislocated Workers

Reported Information	Individuals who Recieved Training Services		Individuals who only Received Core and Intensive Services	
Entered Employment Rate	58.8%	40 68	48.6%	1,366 2,811
Employment Retention Rate	84.8%	28 33	72.8%	558 767
Average Earnings	\$14,135.3	395,787 28	\$9,345.7	5,214,920 558

### Youth (14-21) Program Results

Reported Information	Negotiated Performance Level (80%)	Actual Performance	Numerator / Denominator
Placement in Employment or Education	70.0% (56.0%)	82.9%	29 35
Attainment of a Degree or Certificate	69.0% (55.2%)	80.9%	38 47
Literacy and Numeracy Gains	31.0% (24.8%)	75.0%	6 8

### Other Reported Information

Reported Information	Adults		Dislocated Workers	
12-Month Employment Retention	78.8%	1,348 1,711	71.1%	391 550
12-Month Earnings Change	(\$310.7)	-531,603 1,711	95.8%	3,643,015 3,803,858
Entered Non-Traditional Employment	0.0%	0 1,868	0.0%	0 1,406
Wages At Entered Employment	\$367,339.6	6,861,903 1,868	\$378,518.4	5,321,969 1,406
Employment Related Training	0.0%	0 35	0.0%	0 40

### Participation Levels

Reported Information	Total Participants Served	Total Exiters
Total Adult Customers	7,271	5,950
Total Adult self-service only	0	0
WIA Adult	7,210	5,896
WIA Dislocated Worker	6,156	4,895
Total Youth (14-21)	68	40
Younger Youth (14-18)	45	30
Older Youth (19-21)	23	10
Out-of-School Youth	33	13
In-School Youth	35	27

Performance was Calculated: 9/19/2011 2:37:39 PM

\* Data suppressed for confidentiality purposes

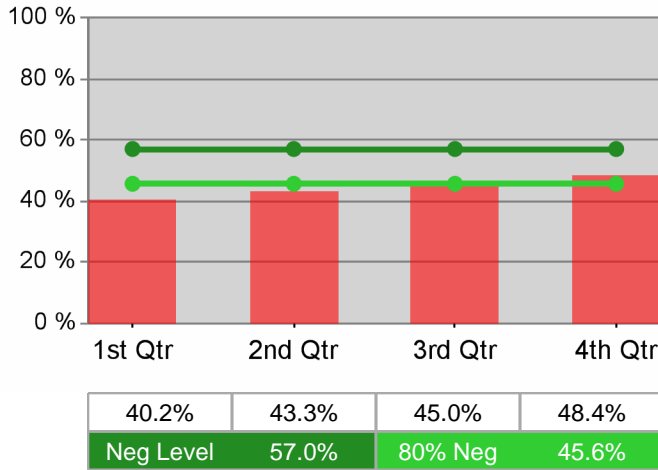
Run Date: 9/19/2011 3:30:22 PM

Page 2 of 2

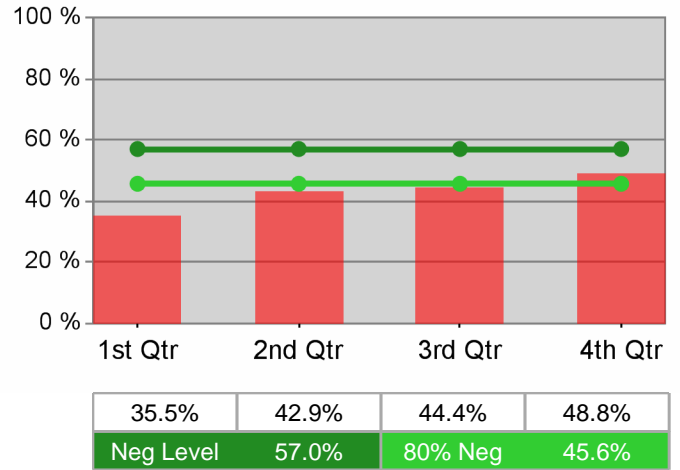
State of Oregon - Department of Community Colleges and Workforce Development

The Oregon Consortium/Workforce Alliance - South Coast Business Employment Corp.  
PY 2010 Year-to-Date

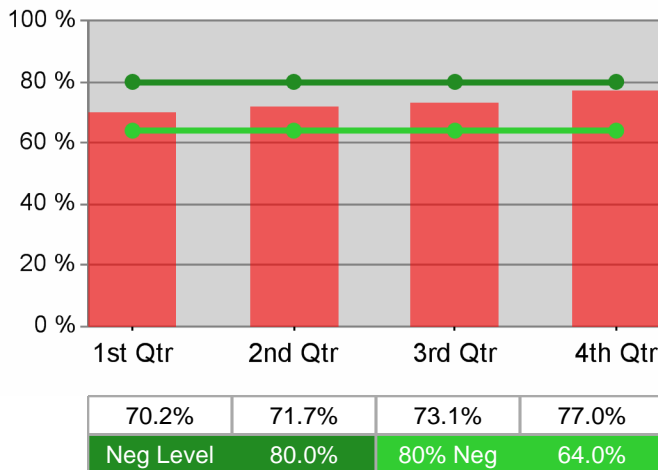
Adult Employment



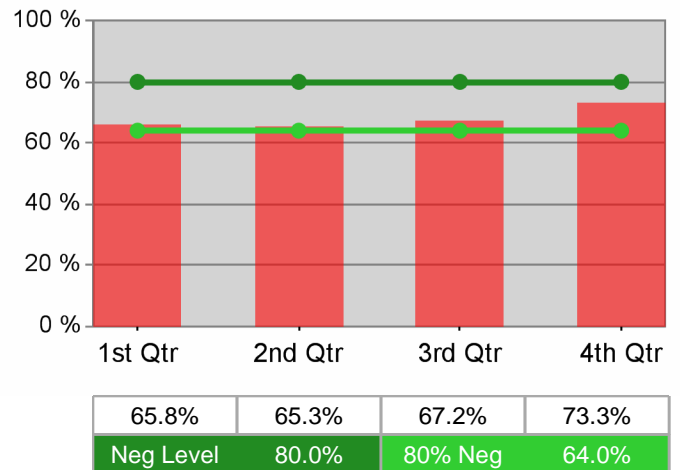
Dislocated Worker Employment



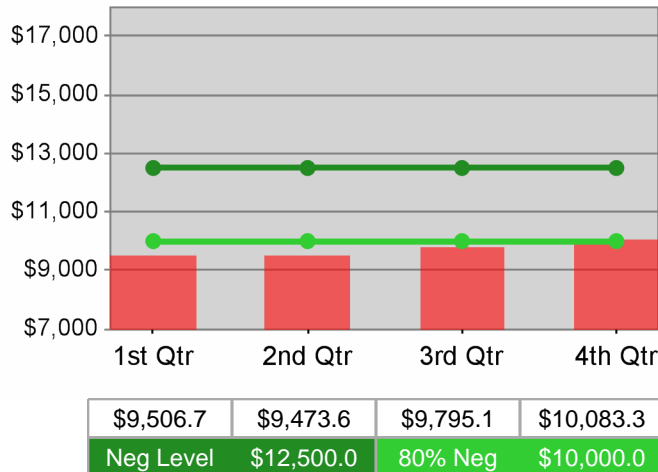
Adult Retention



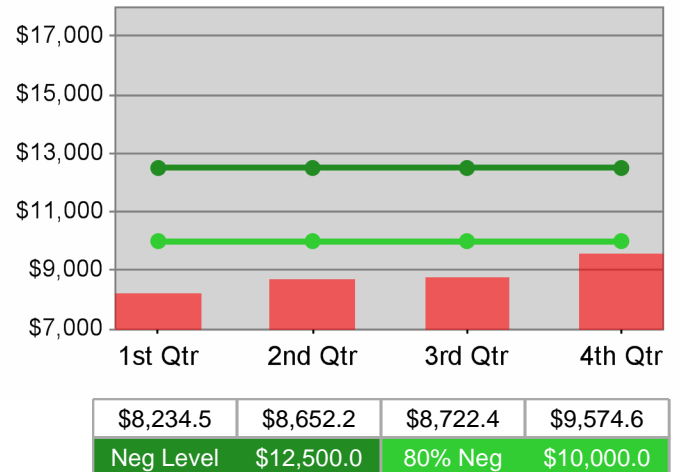
Dislocated Worker Retention



Adult Average Earnings



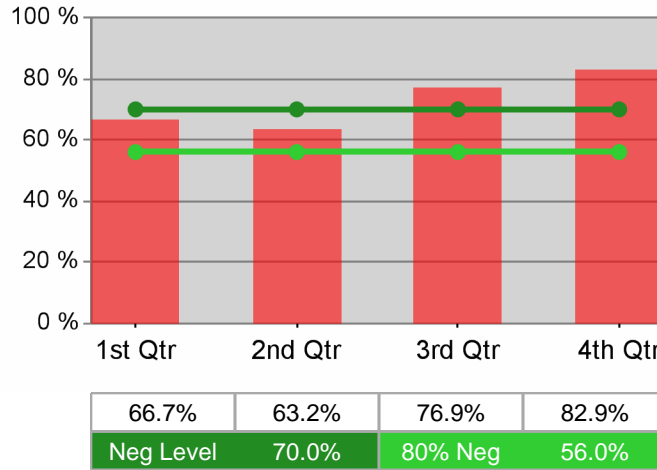
Dislocated Worker Average Earnings



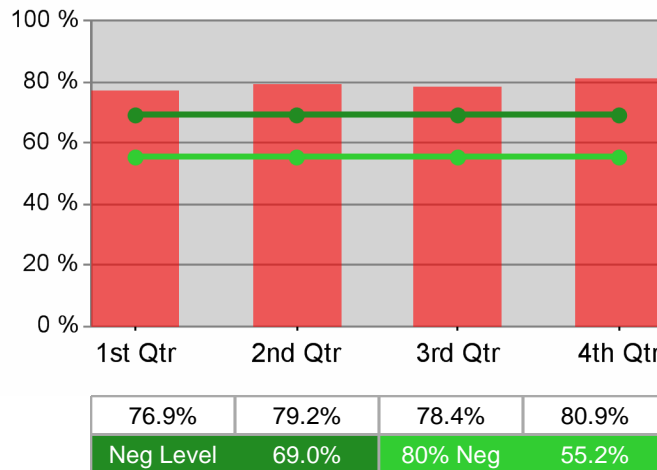
State of Oregon - Department of Community Colleges and Workforce Development

The Oregon Consortium/Workforce Alliance - South Coast Business Employment Corp.  
PY 2010 Year-to-Date

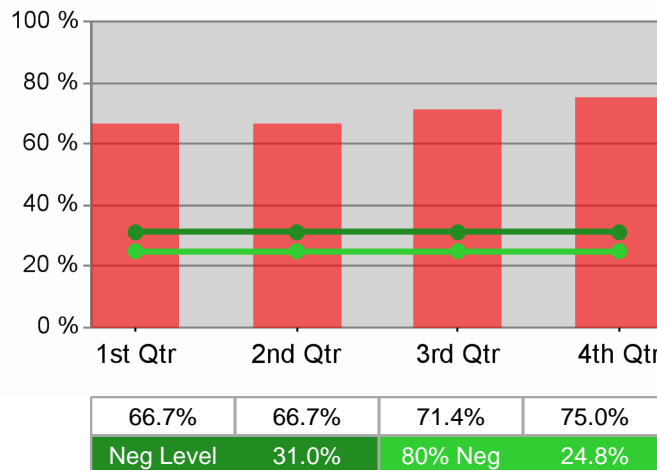
Youth Employment / Education



Youth Degree / Certificate



Youth Numeracy / Literacy



# WIA Annual Report (ETA Form 9091)

## The Oregon Consortium/Workforce Alliance - Mid-Columbia Council Of Governments PY 2010

### Adult Program Results

Reported Information	Negotiated Performance Level (80%)	Actual Performance	Numerator / Denominator
Entered Employment Rate	57.0% (45.6%)	55.3%	1,033 1,869
Employment Retention Rate	80.0% (64.0%)	76.3%	835 1,095
Average Earnings	\$12,500.0 (\$10,000.0)	\$10,517.9	8,782,412 835

### Adult Special Populations

Reported Information	Public Assistance Recipients Receiving Intensive or Training Services		Veterans		Individuals with Disabilities		Older Individuals	
Entered Employment Rate	42.9%	144 336	51.4%	89 173	27.4%	20 73	48.4%	107 221
Employment Retention Rate	82.3%	65 79	73.7%	70 95	68.8%	11 16	81.0%	85 105
Average Earnings	\$8,998.1	584,874 65	\$12,208.7	854,611 70	\$4,934.1	54,275 11	\$10,297.3	875,269 85

### Other Adult Populations

Reported Information	Individuals who Received Training Services		Individuals who only Received Core and Intensive Services	
Entered Employment Rate	58.3%	28 48	55.2%	1,005 1,821
Employment Retention Rate	92.3%	12 13	76.1%	823 1,082
Average Earnings	\$11,668.7	140,024 12	\$10,501.1	8,642,388 823

### Dislocated Worker Program Results

Reported Information	Negotiated Performance Level (80%)	Actual Performance	Numerator / Denominator
Entered Employment Rate	57.0% (45.6%)	56.6%	752 1,329
Employment Retention Rate	80.0% (64.0%)	78.6%	359 457
Average Earnings	\$12,500.0 (\$10,000.0)	\$11,279.2	4,049,241 359

### Dislocated Worker Special Populations

Reported Information	Veterans		Individuals with Disabilities		Older Individuals		Displaced Homemakers	
Entered Employment Rate	54.6%	71 130	29.8%	17 57	52.4%	89 170	47.1%	136 289
Employment Retention Rate	77.6%	38 49	70.0%	7 10	89.1%	49 55	72.5%	50 69
Average Earnings	\$10,152.7	385,803 38	\$9,007.1	63,050 7	\$10,436.7	511,399 49	\$8,595.9	429,794 50

\* Data suppressed for confidentiality purposes

# WIA Annual Report (ETA Form 9091)

## The Oregon Consortium/Workforce Alliance - Mid-Columbia Council Of Governments PY 2010

### Other Dislocated Workers

Reported Information	Individuals who Recieved Training Services		Individuals who only Received Core and Intensive Services	
Entered Employment Rate	64.2%	34 53	56.3%	718 1,276
Employment Retention Rate	88.9%	16 18	78.1%	343 439
Average Earnings	\$10,801.8	172,829 16	\$11,301.5	3,876,412 343

### Youth (14-21) Program Results

Reported Information	Negotiated Performance Level (80%)	Actual Performance	Numerator / Denominator
Placement in Employment or Education	70.0% (56.0%)	64.3%	18 28
Attainment of a Degree or Certificate	69.0% (55.2%)	47.6%	10 21
Literacy and Numeracy Gains	31.0% (24.8%)	28.6%	* *

### Other Reported Information

Reported Information	Adults		Dislocated Workers	
12-Month Employment Retention	77.3%	749 969	75.8%	247 326
12-Month Earnings Change	(\$247.9)	-240,196 969	88.8%	2,727,982 3,071,466
Entered Non-Traditional Employment	0.0%	0 1,033	0.0%	0 752
Wages At Entered Employment	\$482,637.5	4,971,166 1,030	\$493,920.2	3,699,462 749
Employment Related Training	0.0%	0 28	0.0%	0 34

### Participation Levels

Reported Information	Total Participants Served	Total Exiters
Total Adult Customers	3,942	2,879
Total Adult self-service only	0	0
WIA Adult	3,895	2,831
WIA Dislocated Worker	3,284	2,222
Total Youth (14-21)	32	29
Younger Youth (14-18)	16	19
Older Youth (19-21)	16	10
Out-of-School Youth	22	19
In-School Youth	10	10

Performance was Calculated: 9/19/2011 2:39:37 PM

\* Data suppressed for confidentiality purposes

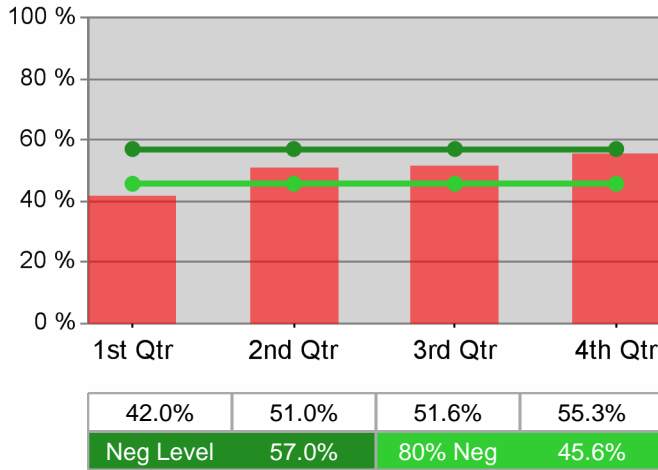
Run Date: 9/19/2011 3:30:24 PM

Page 2 of 2

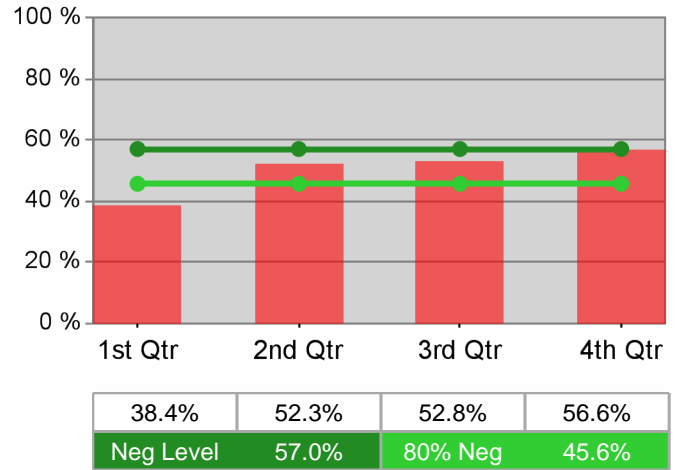
State of Oregon - Department of Community Colleges and Workforce Development

The Oregon Consortium/Workforce Alliance - Mid-Columbia Council Of Governments  
PY 2010 Year-to-Date

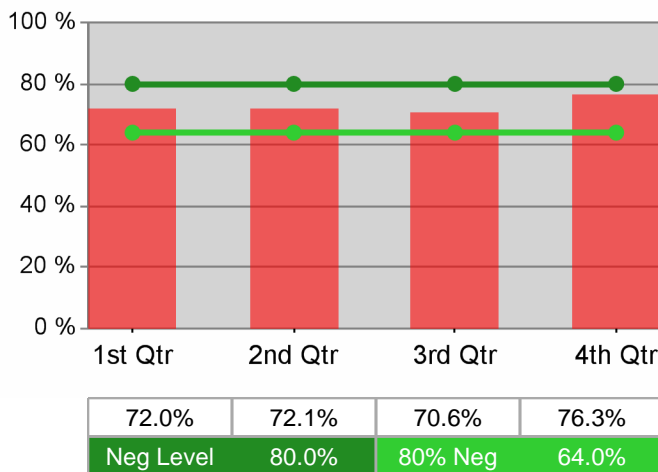
Adult Employment



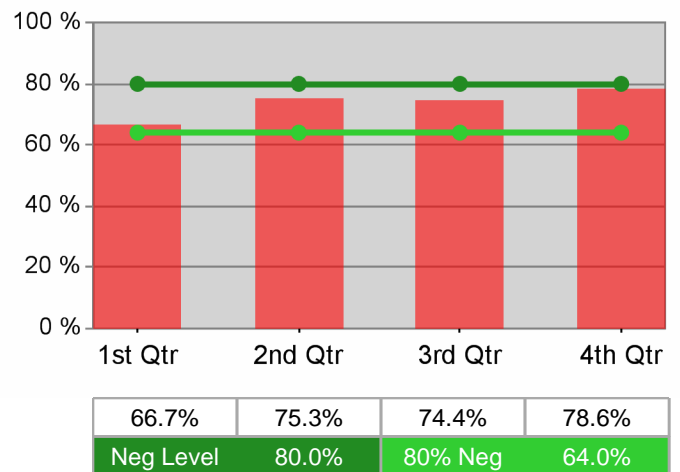
Dislocated Worker Employment



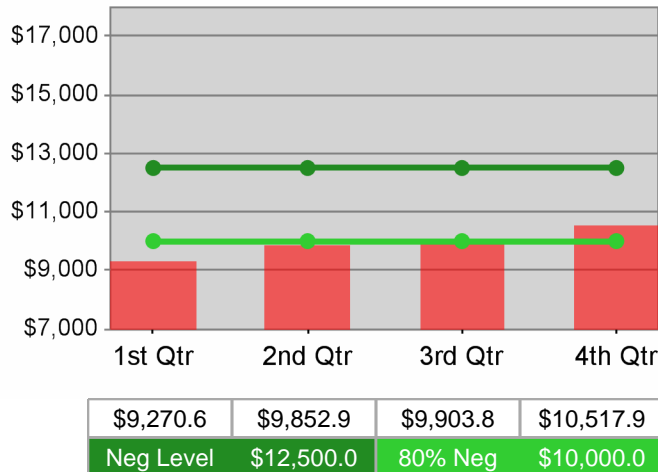
Adult Retention



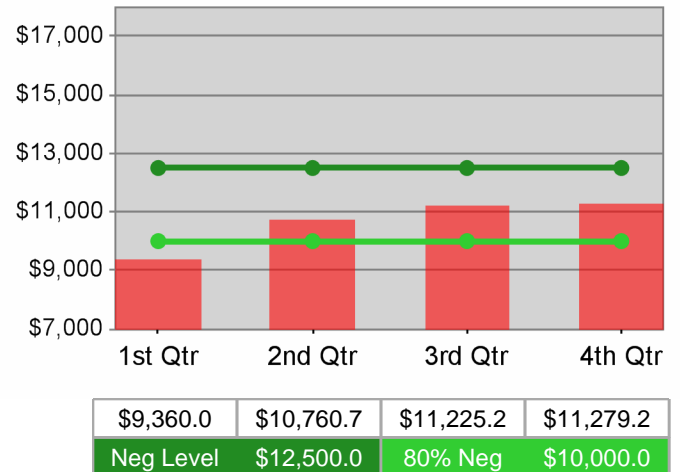
Dislocated Worker Retention



Adult Average Earnings



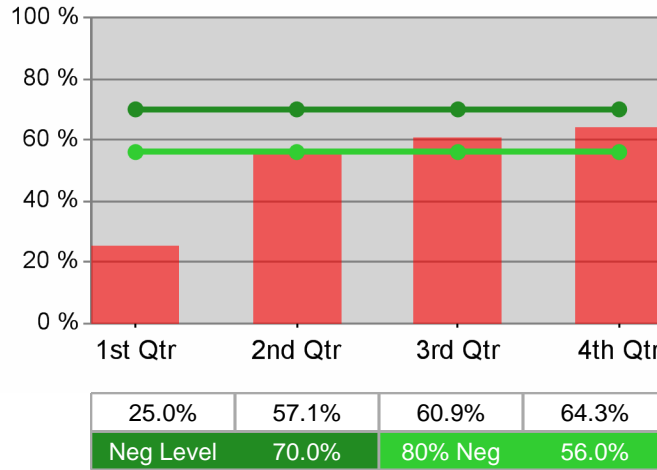
Dislocated Worker Average Earnings



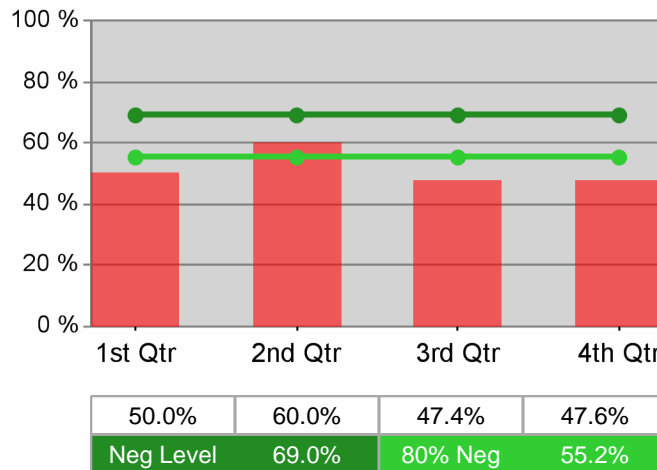
State of Oregon - Department of Community Colleges and Workforce Development

The Oregon Consortium/Workforce Alliance - Mid-Columbia Council Of Governments  
PY 2010 Year-to-Date

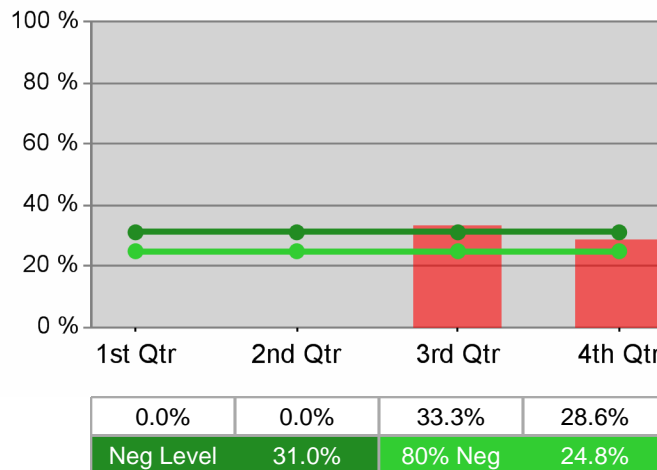
Youth Employment / Education



Youth Degree / Certificate



Youth Numeracy / Literacy





# WIA Annual Report (ETA Form 9091)

## The Oregon Consortium/Workforce Alliance - Central Oregon Intergovernment Council PY 2010

### Adult Program Results

Reported Information	Negotiated Performance Level (80%)	Actual Performance	Numerator / Denominator
Entered Employment Rate	57.0% (45.6%)	46.8%	5,036 10,771
Employment Retention Rate	80.0% (64.0%)	78.4%	4,539 5,789
Average Earnings	\$12,500.0 (\$10,000.0)	\$12,138.9	55,098,362 4,539

### Adult Special Populations

Reported Information	Public Assistance Recipients Receiving Intensive or Training Services		Veterans		Individuals with Disabilities		Older Individuals	
Entered Employment Rate	48.4%	45 93	42.0%	444 1,057	24.7%	73 296	39.9%	753 1,888
Employment Retention Rate	78.9%	30 38	77.6%	420 541	78.3%	47 60	78.8%	644 817
Average Earnings	\$9,627.1	288,812 30	\$13,575.7	5,701,773 420	\$10,307.7	484,462 47	\$12,810.4	8,249,871 644

### Other Adult Populations

Reported Information	Individuals who Received Training Services		Individuals who only Received Core and Intensive Services	
Entered Employment Rate	53.0%	35 66	46.7%	5,001 10,705
Employment Retention Rate	89.3%	25 28	78.4%	4,514 5,761
Average Earnings	\$13,473.7	336,842 25	\$12,131.5	54,761,520 4,514

### Dislocated Worker Program Results

Reported Information	Negotiated Performance Level (80%)	Actual Performance	Numerator / Denominator
Entered Employment Rate	57.0% (45.6%)	48.2%	3,922 8,136
Employment Retention Rate	80.0% (64.0%)	77.6%	2,274 2,930
Average Earnings	\$12,500.0 (\$10,000.0)	\$12,772.3	29,044,202 2,274

### Dislocated Worker Special Populations

Reported Information	Veterans		Individuals with Disabilities		Older Individuals		Displaced Homemakers	
Entered Employment Rate	44.8%	346 772	25.4%	58 228	41.6%	602 1,447	44.3%	733 1,654
Employment Retention Rate	74.2%	245 330	75.0%	24 32	77.1%	363 471	79.5%	353 444
Average Earnings	\$13,445.9	3,294,249 245	\$12,055.0	289,321 24	\$13,814.4	5,014,633 363	\$11,307.2	3,991,428 353

\* Data suppressed for confidentiality purposes

# WIA Annual Report (ETA Form 9091)

## The Oregon Consortium/Workforce Alliance - Central Oregon Intergovernment Council PY 2010

### Other Dislocated Workers

Reported Information	Individuals who Recieved Training Services		Individuals who only Received Core and Intensive Services	
Entered Employment Rate	46.8%	44 94	48.2%	3,878 8,042
Employment Retention Rate	84.8%	28 33	77.5%	2,246 2,897
Average Earnings	\$11,777.6	329,774 28	\$12,784.7	28,714,428 2,246

### Youth (14-21) Program Results

Reported Information	Negotiated Performance Level (80%)	Actual Performance	Numerator / Denominator
Placement in Employment or Education	70.0% (56.0%)	65.0%	52 80
Attainment of a Degree or Certificate	69.0% (55.2%)	75.3%	58 77
Literacy and Numeracy Gains	31.0% (24.8%)	92.3%	12 13

### Other Reported Information

Reported Information	Adults		Dislocated Workers	
12-Month Employment Retention	77.7%	3,884 5,000	74.2%	1,558 2,100
12-Month Earnings Change	(\$2,022.0)	-10,108,073 4,999	73.7%	18,408,370 24,982,795
Entered Non-Traditional Employment	0.0%	0 5,036	0.0%	0 3,922
Wages At Entered Employment	\$455,628.2	22,940,878 5,035	\$468,822.2	18,382,520 3,921
Employment Related Training	0.0%	0 35	0.0%	0 44

### Participation Levels

Reported Information	Total Participants Served	Total Exiters
Total Adult Customers	18,273	15,034
Total Adult self-service only	0	0
WIA Adult	18,001	14,873
WIA Dislocated Worker	15,982	12,958
Total Youth (14-21)	136	82
Younger Youth (14-18)	127	73
Older Youth (19-21)	9	9
Out-of-School Youth	40	28
In-School Youth	96	54

Performance was Calculated: 9/19/2011 2:41:37 PM

\* Data suppressed for confidentiality purposes

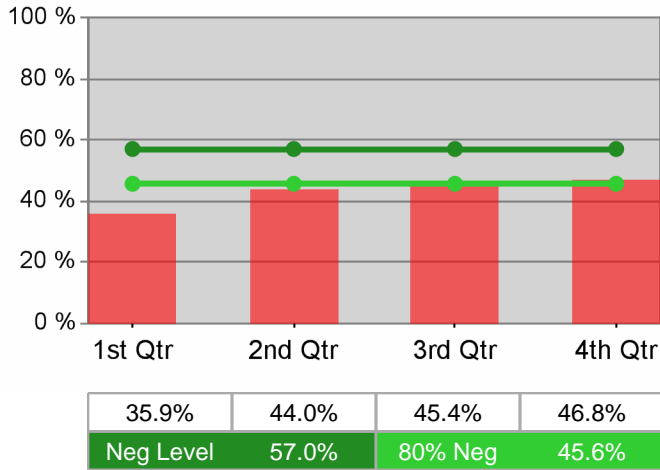
Run Date: 9/19/2011 3:30:25 PM

Page 2 of 2

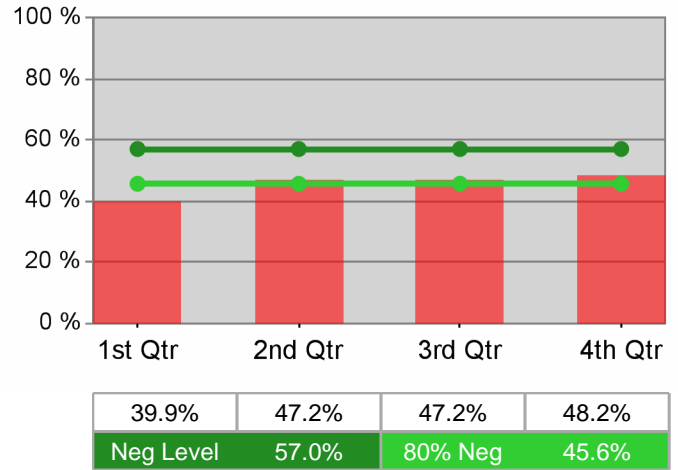
State of Oregon - Department of Community Colleges and Workforce Development

The Oregon Consortium/Workforce Alliance - Central Oregon Intergovernment Council  
PY 2010 Year-to-Date

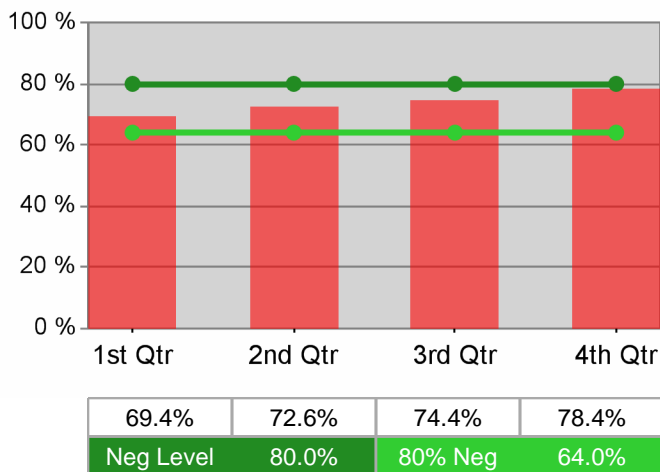
Adult Employment



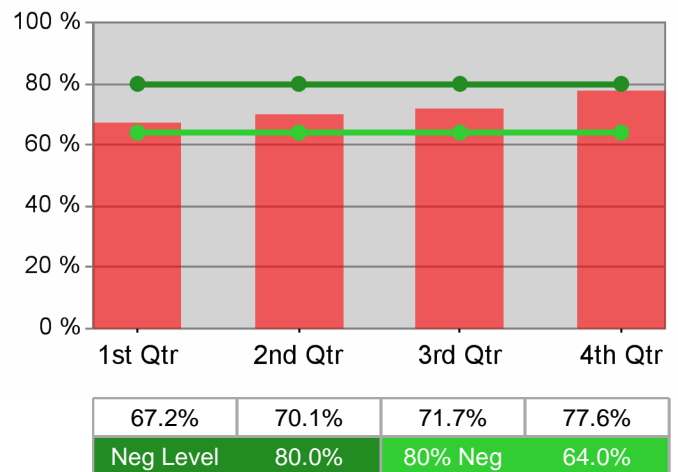
Dislocated Worker Employment



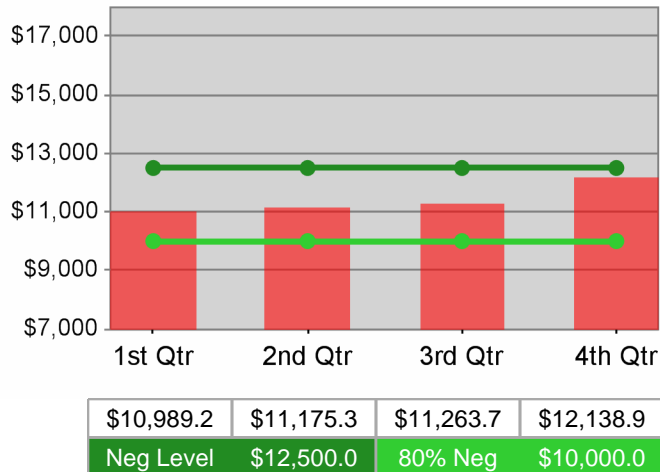
Adult Retention



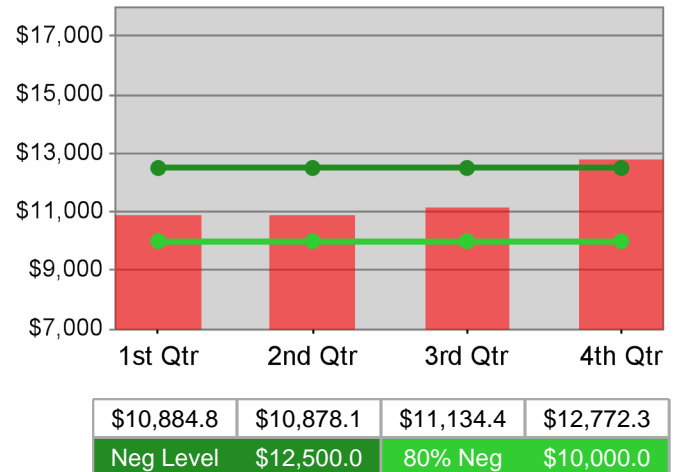
Dislocated Worker Retention



Adult Average Earnings

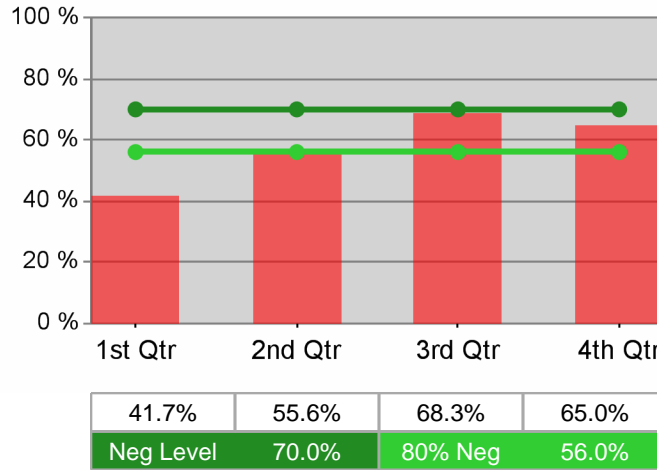


Dislocated Worker Average Earnings

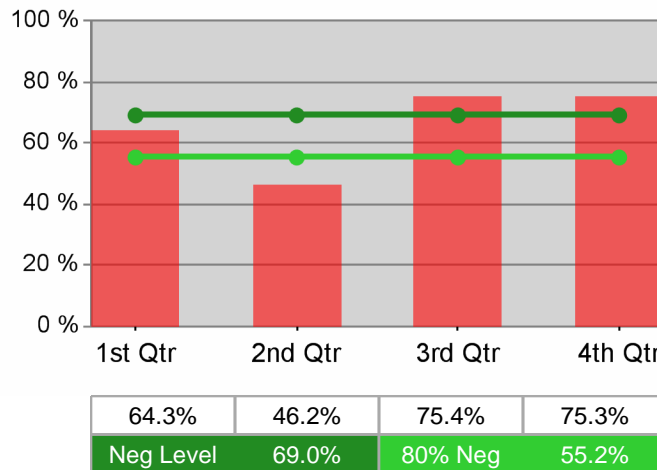


The Oregon Consortium/Workforce Alliance - Central Oregon Intergovernment Council  
PY 2010 Year-to-Date

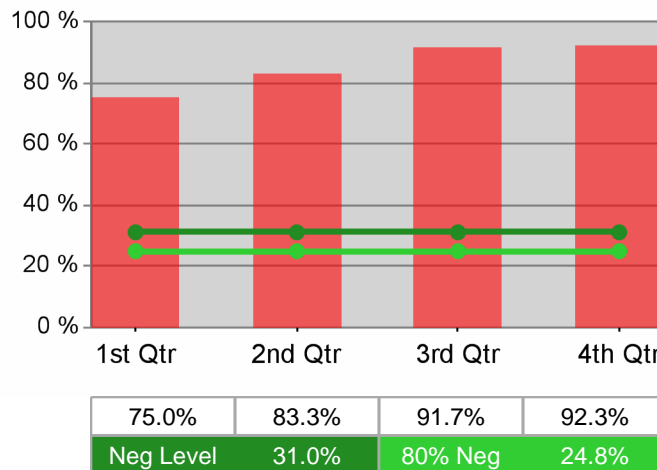
Youth Employment / Education



Youth Degree / Certificate



Youth Numeracy / Literacy



# WIA Annual Report (ETA Form 9091)

## The Oregon Consortium/Workforce Alliance - Central OR Intergovt Council - Klamath & Lake PY 2010

### Adult Program Results

Reported Information	Negotiated Performance Level (80%)	Actual Performance	Numerator / Denominator
Entered Employment Rate	57.0% (45.6%)	46.7%	1,631 3,491
Employment Retention Rate	80.0% (64.0%)	75.0%	1,262 1,683
Average Earnings	\$12,500.0 (\$10,000.0)	\$11,832.9	14,933,122 1,262

### Adult Special Populations

Reported Information	Public Assistance Recipients Receiving Intensive or Training Services		Veterans		Individuals with Disabilities		Older Individuals	
Entered Employment Rate	50.0%	25 50	42.1%	158 375	21.2%	22 104	37.1%	162 437
Employment Retention Rate	83.3%	20 24	66.4%	81 122	63.6%	7 11	77.2%	98 127
Average Earnings	\$10,109.3	202,186 20	\$13,065.6	1,058,311 81	\$5,442.6	38,098 7	\$14,223.3	1,393,886 98

### Other Adult Populations

Reported Information	Individuals who Received Training Services		Individuals who only Received Core and Intensive Services	
Entered Employment Rate	54.0%	27 50	46.6%	1,604 3,441
Employment Retention Rate	74.1%	20 27	75.0%	1,242 1,656
Average Earnings	\$14,184.8	283,695 20	\$11,795.0	14,649,427 1,242

### Dislocated Worker Program Results

Reported Information	Negotiated Performance Level (80%)	Actual Performance	Numerator / Denominator
Entered Employment Rate	57.0% (45.6%)	48.4%	1,280 2,643
Employment Retention Rate	80.0% (64.0%)	77.0%	610 792
Average Earnings	\$12,500.0 (\$10,000.0)	\$13,606.8	8,300,152 610

### Dislocated Worker Special Populations

Reported Information	Veterans		Individuals with Disabilities		Older Individuals		Displaced Homemakers	
Entered Employment Rate	44.4%	128 288	22.6%	19 84	39.9%	143 358	44.2%	272 616
Employment Retention Rate	66.7%	48 72	57.1%	* *	70.9%	56 79	73.9%	88 119
Average Earnings	\$14,788.9	709,865 48	\$6,311.3	* *	\$15,545.9	870,572 56	\$10,917.7	960,760 88

\* Data suppressed for confidentiality purposes

# WIA Annual Report (ETA Form 9091)

## The Oregon Consortium/Workforce Alliance - Central OR Intergovt Council - Klamath & Lake PY 2010

### Other Dislocated Workers

Reported Information	Individuals who Recieved Training Services		Individuals who only Received Core and Intensive Services	
Entered Employment Rate	54.0%	34 63	48.3%	1,246 2,580
Employment Retention Rate	73.3%	22 30	77.2%	588 762
Average Earnings	\$12,785.0	281,270 22	\$13,637.6	8,018,883 588

### Youth (14-21) Program Results

Reported Information	Negotiated Performance Level (80%)	Actual Performance	Numerator / Denominator
Placement in Employment or Education	70.0% (56.0%)	71.1%	27 38
Attainment of a Degree or Certificate	69.0% (55.2%)	66.7%	26 39
Literacy and Numeracy Gains	31.0% (24.8%)	70.0%	7 10

### Other Reported Information

Reported Information	Adults		Dislocated Workers	
12-Month Employment Retention	76.6%	996 1,300	72.1%	313 434
12-Month Earnings Change	(\$395.5)	-514,129 1,300	95.6%	3,473,825 3,634,950
Entered Non-Traditional Employment	0.0%	0 1,631	0.0%	0 1,280
Wages At Entered Employment	\$431,174.6	7,032,458 1,631	\$461,203.0	5,898,787 1,279
Employment Related Training	0.0%	0 27	0.0%	0 34

### Participation Levels

Reported Information	Total Participants Served	Total Exiters
Total Adult Customers	5,582	4,703
Total Adult self-service only	0	0
WIA Adult	5,513	4,652
WIA Dislocated Worker	4,783	3,931
Total Youth (14-21)	114	57
Younger Youth (14-18)	103	52
Older Youth (19-21)	11	*
Out-of-School Youth	30	23
In-School Youth	84	34

Performance was Calculated: 9/19/2011 2:43:38 PM

\* Data suppressed for confidentiality purposes

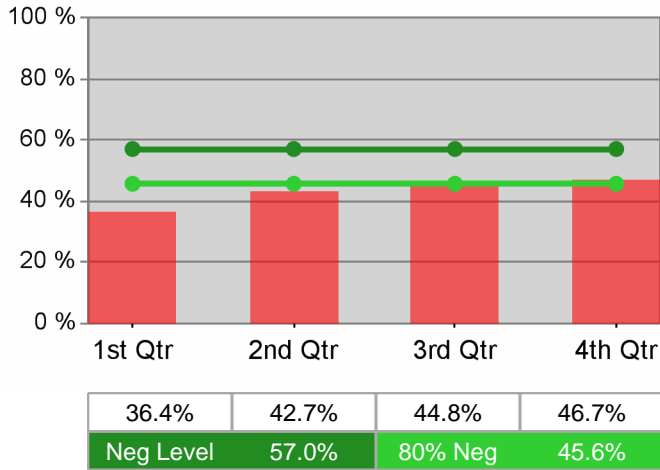
Run Date: 9/19/2011 3:30:27 PM

Page 2 of 2

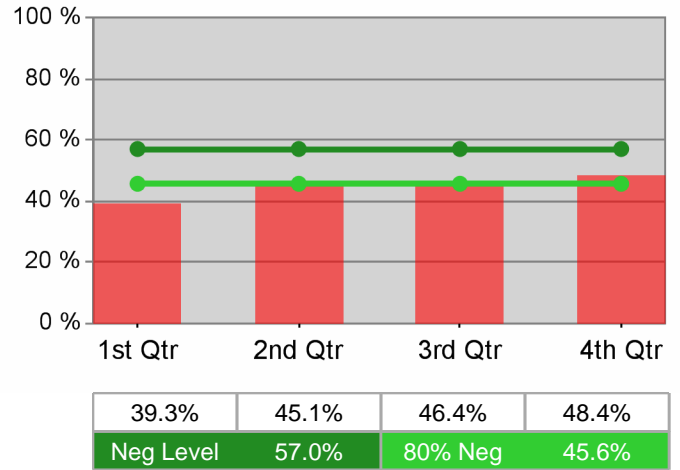
State of Oregon - Department of Community Colleges and Workforce Development

The Oregon Consortium/Workforce Alliance - Central OR Intergovt Council - Klamath & Lake  
PY 2010 Year-to-Date

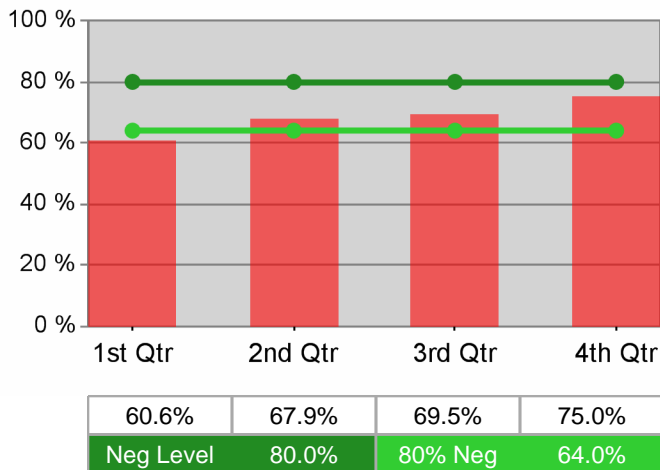
Adult Employment



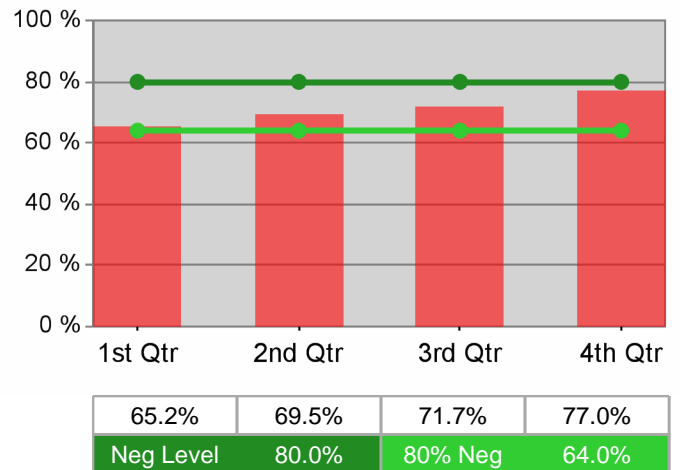
Dislocated Worker Employment



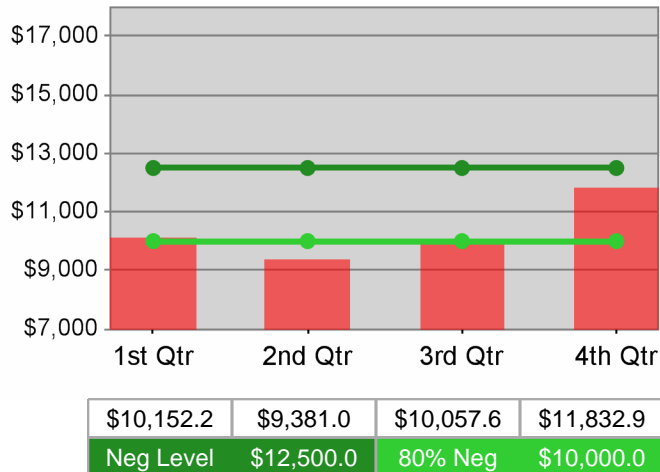
Adult Retention



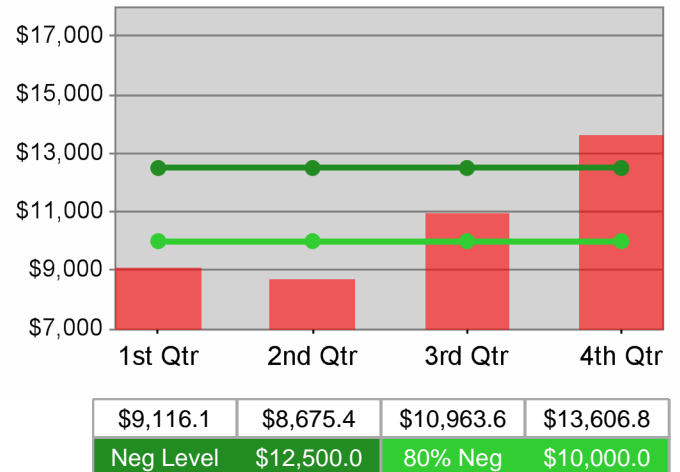
Dislocated Worker Retention



Adult Average Earnings



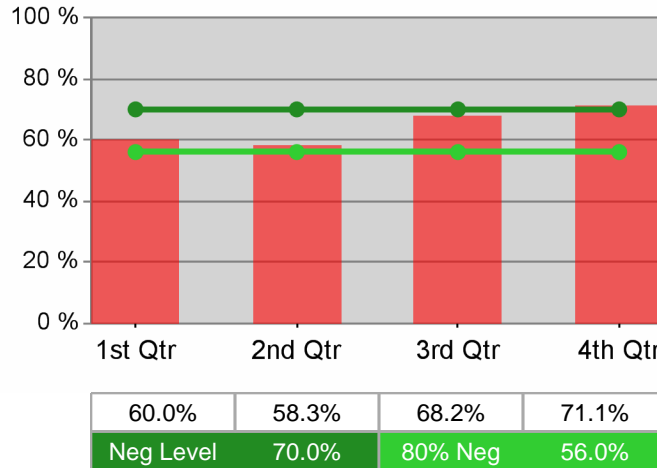
Dislocated Worker Average Earnings



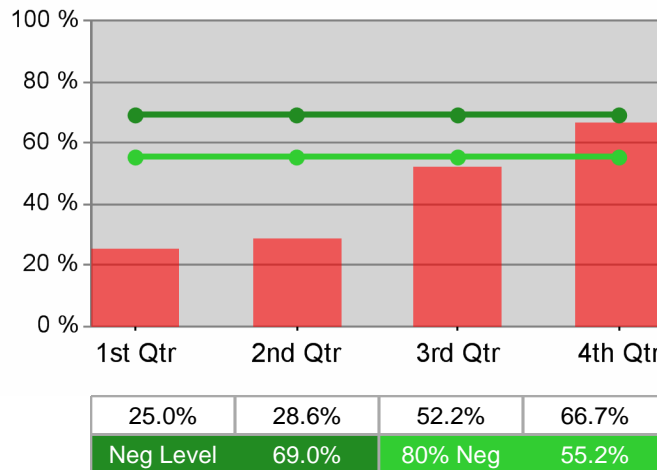
State of Oregon - Department of Community Colleges and Workforce Development

The Oregon Consortium/Workforce Alliance - Central OR Intergovt Council - Klamath & Lake  
PY 2010 Year-to-Date

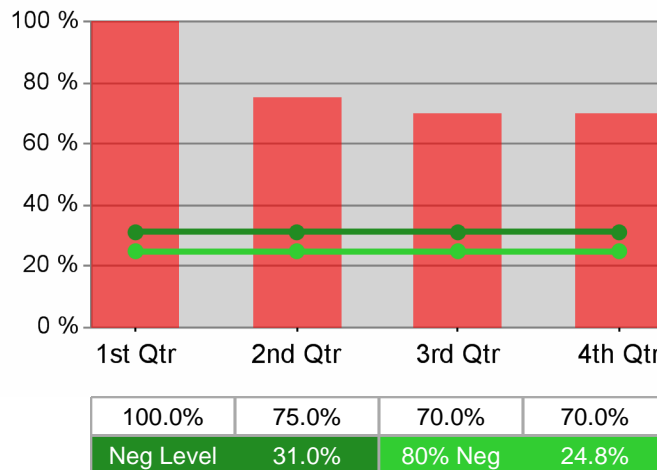
Youth Employment / Education



Youth Degree / Certificate



Youth Numeracy / Literacy





# WIA Annual Report (ETA Form 9091)

## The Oregon Consortium/Workforce Alliance - Community Action Programs of East Central Oregon PY 2010

### Adult Program Results

Reported Information	Negotiated Performance Level (80%)	Actual Performance	Numerator / Denominator
Entered Employment Rate	57.0% (45.6%)	57.5%	2,524 4,392
Employment Retention Rate	80.0% (64.0%)	79.3%	2,527 3,188
Average Earnings	\$12,500.0 (\$10,000.0)	\$11,308.3	28,575,962 2,527

### Adult Special Populations

Reported Information	Public Assistance Recipients Receiving Intensive or Training Services		Veterans		Individuals with Disabilities		Older Individuals	
Entered Employment Rate	56.4%	31 55	52.6%	164 312	23.6%	30 127	48.8%	231 473
Employment Retention Rate	82.5%	33 40	79.5%	140 176	83.3%	30 36	81.5%	207 254
Average Earnings	\$14,001.3	462,043 33	\$13,762.1	1,926,690 140	\$10,210.5	306,315 30	\$12,432.1	2,573,452 207

### Other Adult Populations

Reported Information	Individuals who Received Training Services		Individuals who only Received Core and Intensive Services	
Entered Employment Rate	71.7%	43 60	57.3%	2,481 4,332
Employment Retention Rate	89.6%	43 48	79.1%	2,484 3,140
Average Earnings	\$15,608.7	671,173 43	\$11,233.8	27,904,788 2,484

### Dislocated Worker Program Results

Reported Information	Negotiated Performance Level (80%)	Actual Performance	Numerator / Denominator
Entered Employment Rate	57.0% (45.6%)	58.6%	1,798 3,067
Employment Retention Rate	80.0% (64.0%)	77.1%	931 1,207
Average Earnings	\$12,500.0 (\$10,000.0)	\$11,040.0	10,278,272 931

### Dislocated Worker Special Populations

Reported Information	Veterans		Individuals with Disabilities		Older Individuals		Displaced Homemakers	
Entered Employment Rate	54.4%	130 239	27.5%	25 91	51.8%	183 353	48.9%	328 671
Employment Retention Rate	77.3%	68 88	93.3%	14 15	77.6%	114 147	71.5%	118 165
Average Earnings	\$13,787.9	937,576 68	\$11,169.1	156,367 14	\$10,661.6	1,215,421 114	\$11,425.2	1,348,170 118

\* Data suppressed for confidentiality purposes

# WIA Annual Report (ETA Form 9091)

## The Oregon Consortium/Workforce Alliance - Community Action Programs of East Central Oregon PY 2010

### Other Dislocated Workers

Reported Information	Individuals who Recieved Training Services		Individuals who only Received Core and Intensive Services	
Entered Employment Rate	66.1%	37 56	58.5%	1,761 3,011
Employment Retention Rate	81.6%	31 38	77.0%	900 1,169
Average Earnings	\$14,329.2	444,204 31	\$10,926.7	9,834,068 900

### Youth (14-21) Program Results

Reported Information	Negotiated Performance Level (80%)	Actual Performance	Numerator / Denominator
Placement in Employment or Education	70.0% (56.0%)	69.8%	30 43
Attainment of a Degree or Certificate	69.0% (55.2%)	72.7%	32 44
Literacy and Numeracy Gains	31.0% (24.8%)	50.0%	* *

### Other Reported Information

Reported Information	Adults		Dislocated Workers	
12-Month Employment Retention	80.9%	2,251 2,782	76.7%	621 810
12-Month Earnings Change	\$625.1	1,739,049 2,782	90.9%	6,431,452 7,072,978
Entered Non-Traditional Employment	0.0%	0 2,524	0.0%	0 1,798
Wages At Entered Employment	\$418,943.9	10,574,145 2,524	\$431,339.3	7,755,481 1,798
Employment Related Training	0.0%	0 43	0.0%	0 37

### Participation Levels

Reported Information	Total Participants Served	Total Exiters
Total Adult Customers	5,965	5,767
Total Adult self-service only	0	0
WIA Adult	5,892	5,720
WIA Dislocated Worker	4,773	4,421
Total Youth (14-21)	143	62
Younger Youth (14-18)	125	54
Older Youth (19-21)	18	8
Out-of-School Youth	12	9
In-School Youth	131	53

Performance was Calculated: 9/19/2011 2:45:37 PM

\* Data suppressed for confidentiality purposes

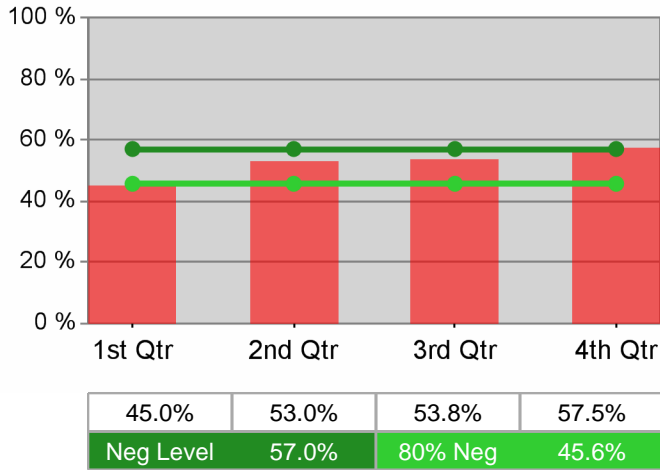
Run Date: 9/19/2011 3:30:28 PM

Page 2 of 2

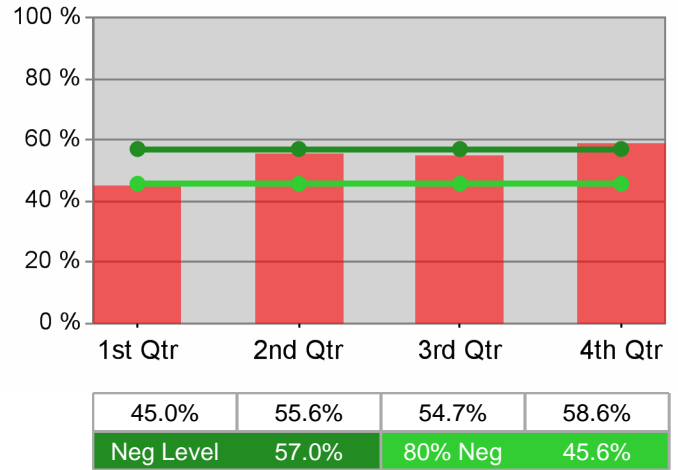
# State of Oregon - Department of Community Colleges and Workforce Development

## The Oregon Consortium/Workforce Alliance - Community Action Programs of East Central Oregon PY 2010 Year-to-Date

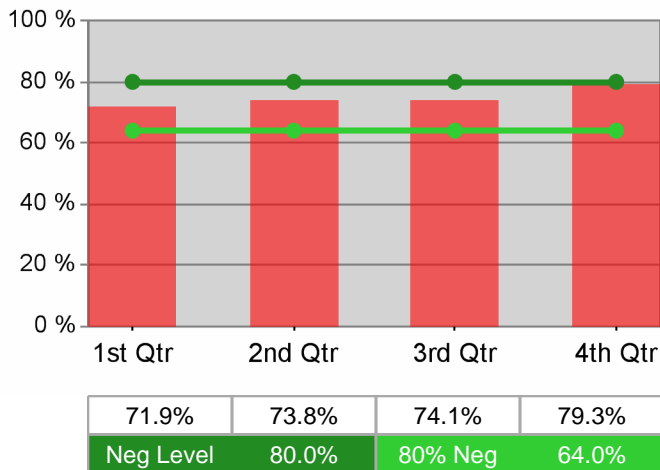
### Adult Employment



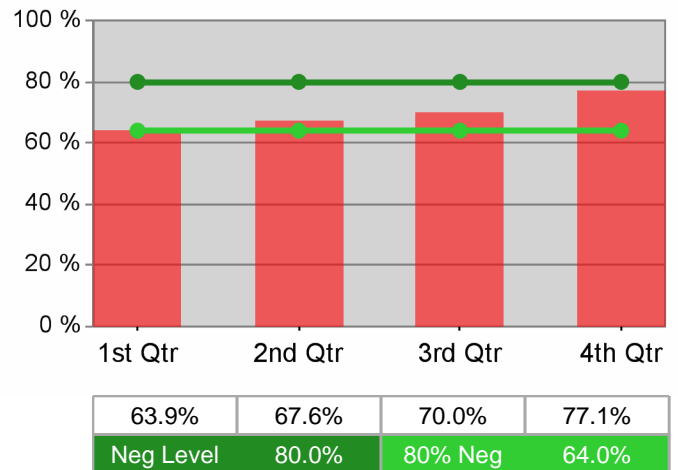
### Dislocated Worker Employment



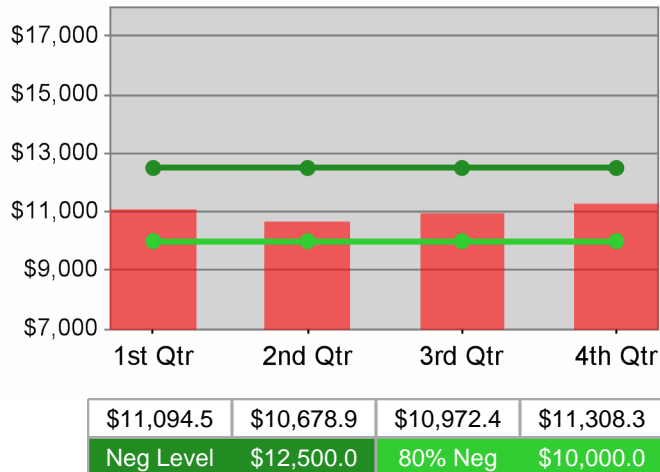
### Adult Retention



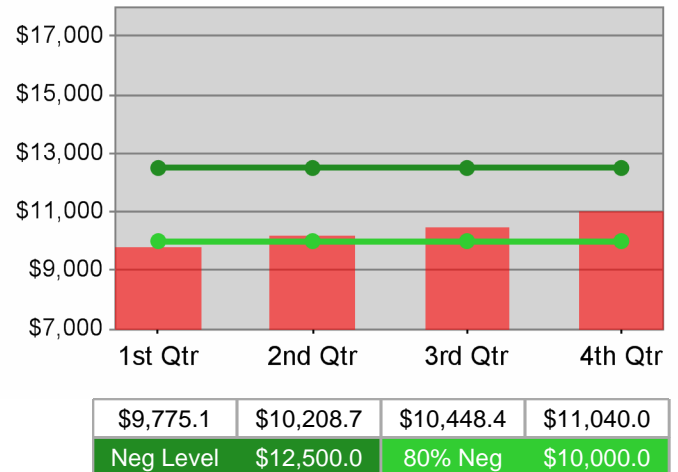
### Dislocated Worker Retention



### Adult Average Earnings



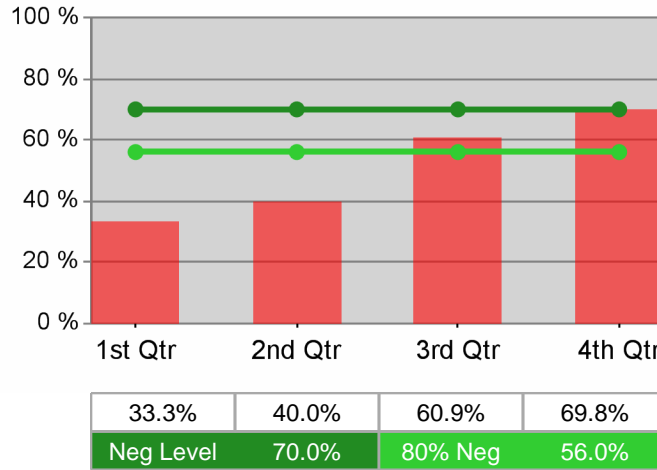
### Dislocated Worker Average Earnings



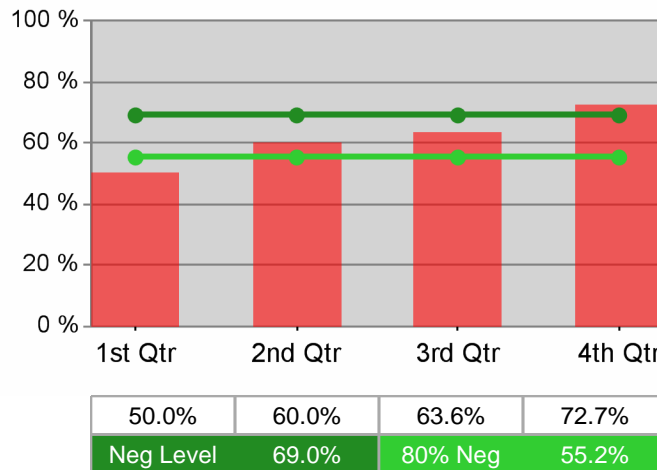
State of Oregon - Department of Community Colleges and Workforce Development

The Oregon Consortium/Workforce Alliance - Community Action Programs of East Central Oregon  
PY 2010 Year-to-Date

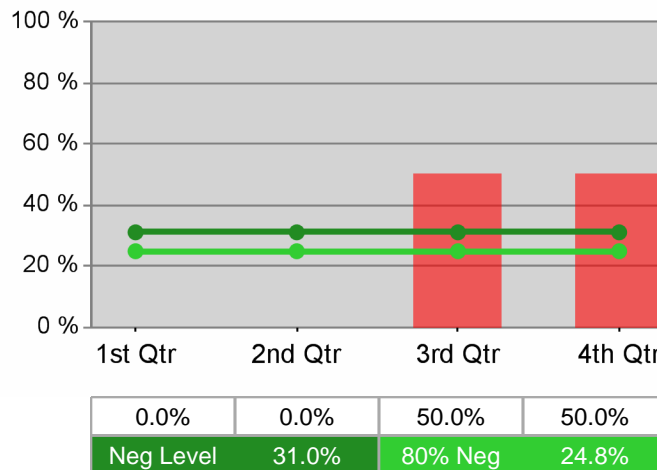
Youth Employment / Education



Youth Degree / Certificate



Youth Numeracy / Literacy



# WIA Annual Report (ETA Form 9091)

## The Oregon Consortium/Workforce Alliance - Training & Employment Consortium - R13 PY 2010

### Adult Program Results

Reported Information	Negotiated Performance Level (80%)	Actual Performance	Numerator / Denominator
Entered Employment Rate	57.0% (45.6%)	55.6%	1,448 2,604
Employment Retention Rate	80.0% (64.0%)	80.3%	1,579 1,967
Average Earnings	\$12,500.0 (\$10,000.0)	\$11,033.0	17,421,106 1,579

### Adult Special Populations

Reported Information	Public Assistance Recipients Receiving Intensive or Training Services		Veterans		Individuals with Disabilities		Older Individuals	
Entered Employment Rate	46.8%	44 94	48.0%	133 277	28.3%	26 92	48.2%	188 390
Employment Retention Rate	73.0%	27 37	78.1%	114 146	65.4%	17 26	85.3%	163 191
Average Earnings	\$7,762.8	209,595 27	\$14,374.9	1,638,735 114	\$7,299.4	124,089 17	\$11,453.8	1,866,977 163

### Other Adult Populations

Reported Information	Individuals who Received Training Services		Individuals who only Received Core and Intensive Services	
Entered Employment Rate	60.7%	34 56	55.5%	1,414 2,548
Employment Retention Rate	85.7%	12 14	80.2%	1,567 1,953
Average Earnings	\$12,141.8	145,701 12	\$11,024.5	17,275,405 1,567

### Dislocated Worker Program Results

Reported Information	Negotiated Performance Level (80%)	Actual Performance	Numerator / Denominator
Entered Employment Rate	57.0% (45.6%)	58.6%	1,205 2,056
Employment Retention Rate	80.0% (64.0%)	81.8%	831 1,016
Average Earnings	\$12,500.0 (\$10,000.0)	\$13,258.0	11,017,392 831

### Dislocated Worker Special Populations

Reported Information	Veterans		Individuals with Disabilities		Older Individuals		Displaced Homemakers	
Entered Employment Rate	52.7%	118 224	30.8%	20 65	53.2%	176 331	55.5%	196 353
Employment Retention Rate	79.2%	80 101	50.0%	* *	82.2%	125 152	84.6%	99 117
Average Earnings	\$15,188.9	1,215,108 80	\$14,973.4	* *	\$12,657.2	1,582,145 125	\$9,549.1	945,359 99

\* Data suppressed for confidentiality purposes

# WIA Annual Report (ETA Form 9091)

## The Oregon Consortium/Workforce Alliance - Training & Employment Consortium - R13 PY 2010

### Other Dislocated Workers

Reported Information	Individuals who Received Training Services		Individuals who only Received Core and Intensive Services	
Entered Employment Rate	65.9%	56 85	58.3%	1,149 1,971
Employment Retention Rate	90.0%	36 40	81.5%	795 976
Average Earnings	\$14,800.8	532,830 36	\$13,188.1	10,484,562 795

### Youth (14-21) Program Results

Reported Information	Negotiated Performance Level (80%)	Actual Performance	Numerator / Denominator
Placement in Employment or Education	70.0% (56.0%)	80.0%	16 20
Attainment of a Degree or Certificate	69.0% (55.2%)	76.5%	13 17
Literacy and Numeracy Gains	31.0% (24.8%)	100.0%	* *

### Other Reported Information

Reported Information	Adults		Dislocated Workers	
12-Month Employment Retention	80.8%	1,408 1,743	80.7%	577 715
12-Month Earnings Change	(\$819.5)	-1,428,321 1,743	86.2%	7,234,069 8,388,240
Entered Non-Traditional Employment	0.0%	0 1,448	0.0%	0 1,205
Wages At Entered Employment	\$450,903.3	6,529,080 1,448	\$486,419.9	5,861,360 1,205
Employment Related Training	0.0%	0 34	0.0%	0 56

### Participation Levels

Reported Information	Total Participants Served	Total Exiters
Total Adult Customers	4,695	3,925
Total Adult self-service only	0	0
WIA Adult	4,652	3,887
WIA Dislocated Worker	3,845	3,141
Total Youth (14-21)	45	17
Younger Youth (14-18)	37	16
Older Youth (19-21)	8	*
Out-of-School Youth	14	*
In-School Youth	31	12

Performance was Calculated: 9/19/2011 2:47:35 PM

\* Data suppressed for confidentiality purposes

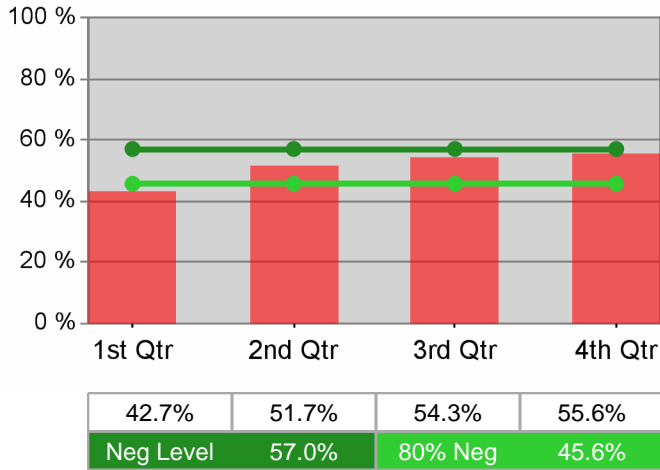
Run Date: 9/19/2011 3:30:29 PM

Page 2 of 2

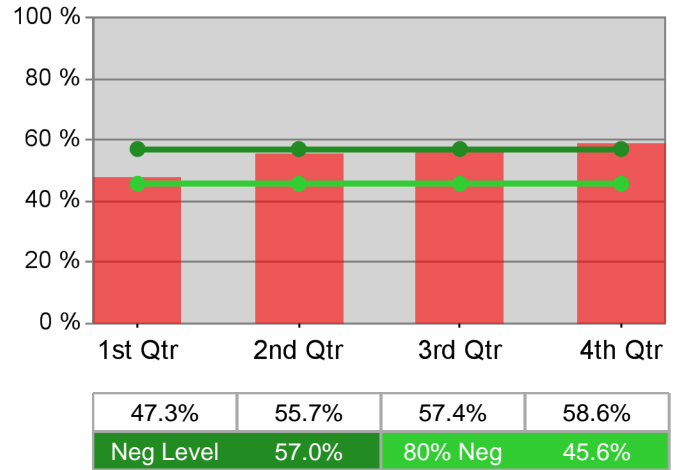
# State of Oregon - Department of Community Colleges and Workforce Development

## The Oregon Consortium/Workforce Alliance - Training & Employment Consortium - R13 PY 2010 Year-to-Date

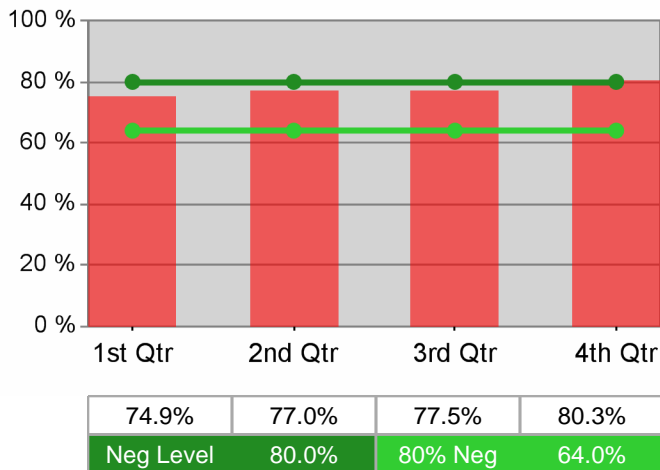
### Adult Employment



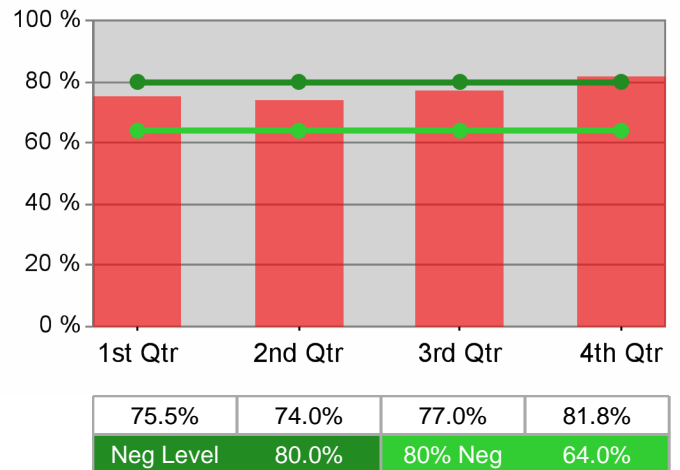
### Dislocated Worker Employment



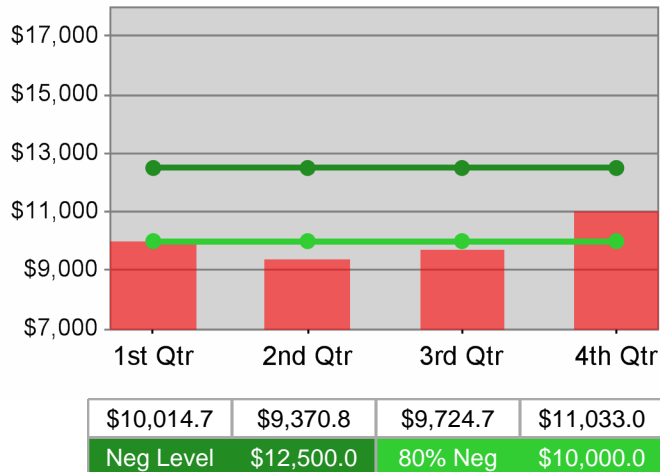
### Adult Retention



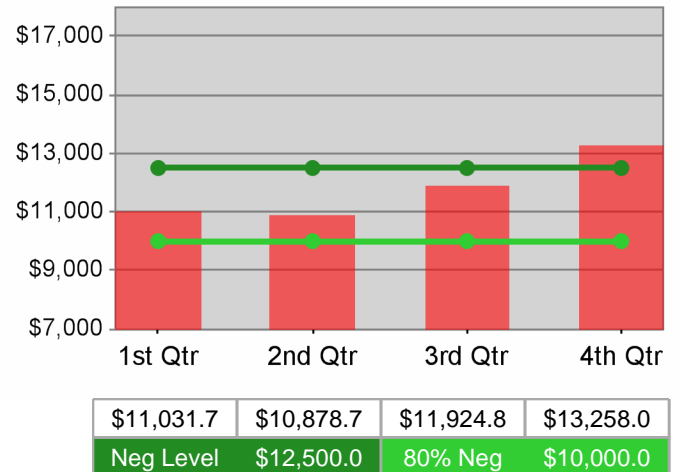
### Dislocated Worker Retention



### Adult Average Earnings



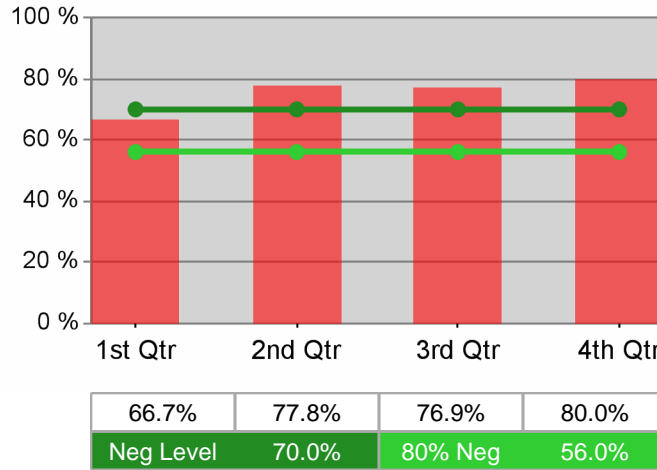
### Dislocated Worker Average Earnings



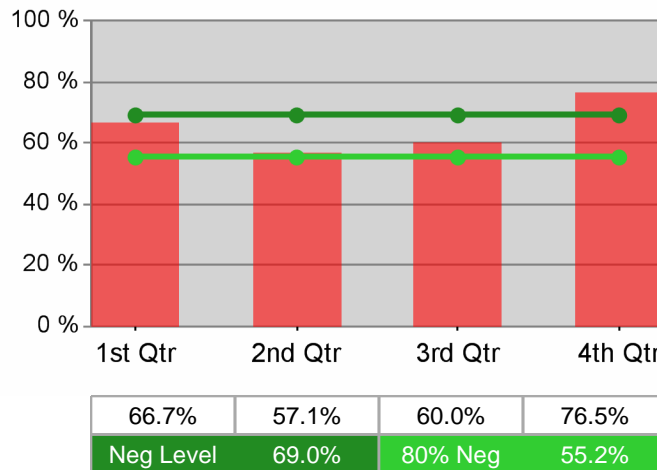
State of Oregon - Department of Community Colleges and Workforce Development

The Oregon Consortium/Workforce Alliance - Training & Employment Consortium - R13  
PY 2010 Year-to-Date

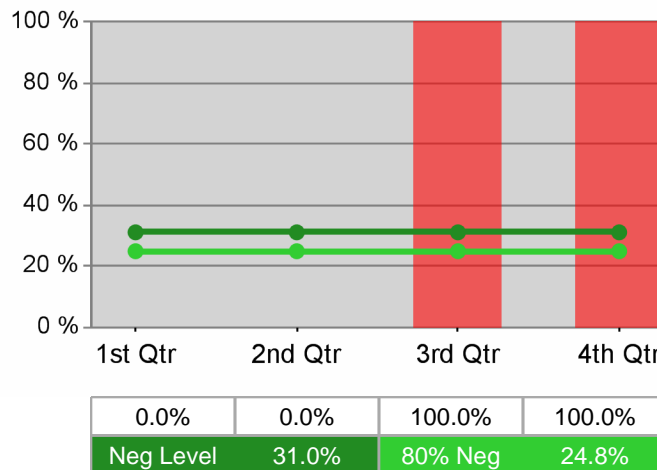
Youth Employment / Education



Youth Degree / Certificate



Youth Numeracy / Literacy





# WIA Annual Report (ETA Form 9091)

## The Oregon Consortium/Workforce Alliance - Training & Employment Consortium - R14 PY 2010

### Adult Program Results

Reported Information	Negotiated Performance Level (80%)	Actual Performance	Numerator / Denominator
Entered Employment Rate	57.0% (45.6%)	52.2%	1,443 2,762
Employment Retention Rate	80.0% (64.0%)	76.7%	1,387 1,808
Average Earnings	\$12,500.0 (\$10,000.0)	\$10,120.1	14,036,620 1,387

### Adult Special Populations

Reported Information	Public Assistance Recipients Receiving Intensive or Training Services		Veterans		Individuals with Disabilities		Older Individuals	
Entered Employment Rate	68.4%	26 38	44.8%	113 252	28.0%	26 93	43.5%	145 333
Employment Retention Rate	71.4%	15 21	75.8%	113 149	75.0%	15 20	84.0%	142 169
Average Earnings	\$10,326.7	154,901 15	\$13,591.7	1,535,858 113	\$7,675.7	115,135 15	\$11,567.5	1,642,583 142

### Other Adult Populations

Reported Information	Individuals who Received Training Services		Individuals who only Received Core and Intensive Services	
Entered Employment Rate	50.0%	24 48	52.3%	1,419 2,714
Employment Retention Rate	78.9%	15 19	76.7%	1,372 1,789
Average Earnings	\$11,967.0	179,505 15	\$10,099.9	13,857,115 1,372

### Dislocated Worker Program Results

Reported Information	Negotiated Performance Level (80%)	Actual Performance	Numerator / Denominator
Entered Employment Rate	57.0% (45.6%)	54.6%	1,098 2,011
Employment Retention Rate	80.0% (64.0%)	73.2%	593 810
Average Earnings	\$12,500.0 (\$10,000.0)	\$11,035.9	6,544,281 593

### Dislocated Worker Special Populations

Reported Information	Veterans		Individuals with Disabilities		Older Individuals		Displaced Homemakers	
Entered Employment Rate	46.7%	92 197	36.8%	28 76	44.2%	117 265	49.6%	241 486
Employment Retention Rate	60.4%	55 91	73.3%	11 15	74.3%	75 101	70.9%	95 134
Average Earnings	\$14,172.6	779,491 55	\$6,152.1	67,673 11	\$11,939.1	895,434 75	\$9,432.1	896,046 95

\* Data suppressed for confidentiality purposes

# WIA Annual Report (ETA Form 9091)

## The Oregon Consortium/Workforce Alliance - Training & Employment Consortium - R14 PY 2010

### Other Dislocated Workers

Reported Information	Individuals who Recieved Training Services		Individuals who only Received Core and Intensive Services	
Entered Employment Rate	53.1%	34 64	54.6%	1,064 1,947
Employment Retention Rate	76.9%	20 26	73.1%	573 784
Average Earnings	\$12,755.6	255,112 20	\$10,975.9	6,289,168 573

### Youth (14-21) Program Results

Reported Information	Negotiated Performance Level (80%)	Actual Performance	Numerator / Denominator
Placement in Employment or Education	70.0% (56.0%)	50.0%	16 32
Attainment of a Degree or Certificate	69.0% (55.2%)	55.2%	16 29
Literacy and Numeracy Gains	31.0% (24.8%)	100.0%	* *

### Other Reported Information

Reported Information	Adults		Dislocated Workers	
12-Month Employment Retention	79.2%	1,266 1,599	68.8%	429 624
12-Month Earnings Change	(\$529.2)	-846,219 1,599	74.9%	4,897,215 6,538,156
Entered Non-Traditional Employment	0.0%	0 1,443	0.0%	0 1,098
Wages At Entered Employment	\$378,442.3	5,460,923 1,443	\$398,289.8	4,373,222 1,098
Employment Related Training	0.0%	0 24	0.0%	0 34

### Participation Levels

Reported Information	Total Participants Served	Total Exiters
Total Adult Customers	4,510	3,932
Total Adult self-service only	0	0
WIA Adult	4,452	3,886
WIA Dislocated Worker	3,725	3,171
Total Youth (14-21)	49	28
Younger Youth (14-18)	34	21
Older Youth (19-21)	15	7
Out-of-School Youth	18	10
In-School Youth	31	18

Performance was Calculated: 9/19/2011 2:49:31 PM

\* Data suppressed for confidentiality purposes

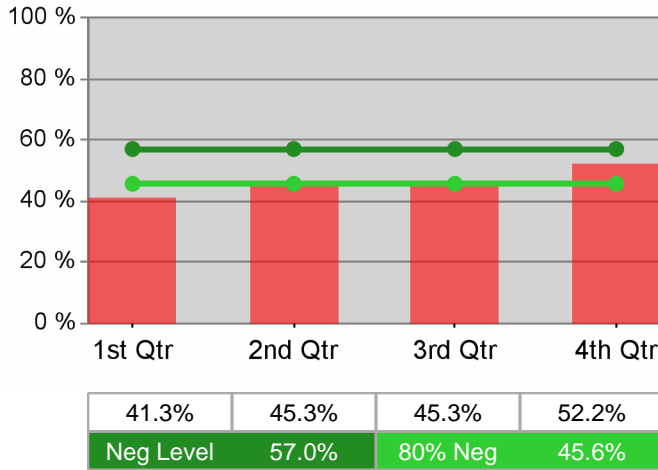
Run Date: 9/19/2011 3:30:31 PM

Page 2 of 2

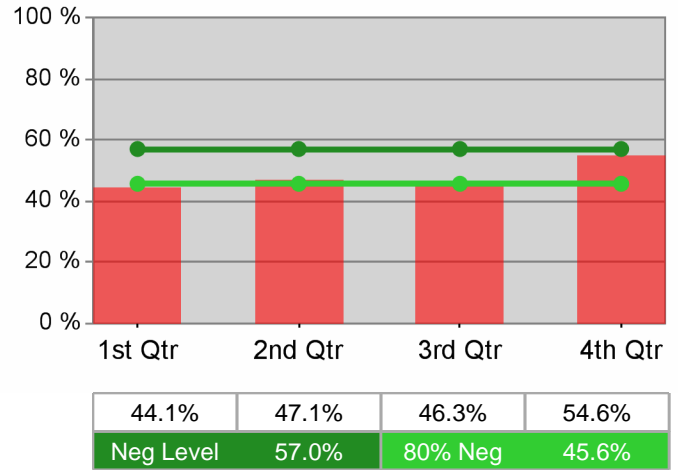
State of Oregon - Department of Community Colleges and Workforce Development

The Oregon Consortium/Workforce Alliance - Training & Employment Consortium - R14  
PY 2010 Year-to-Date

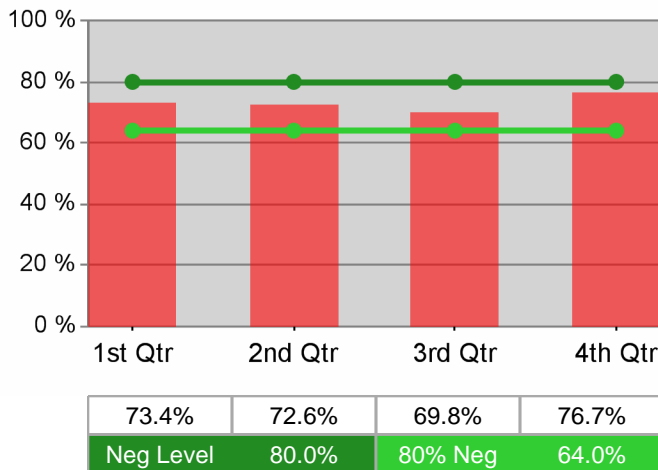
Adult Employment



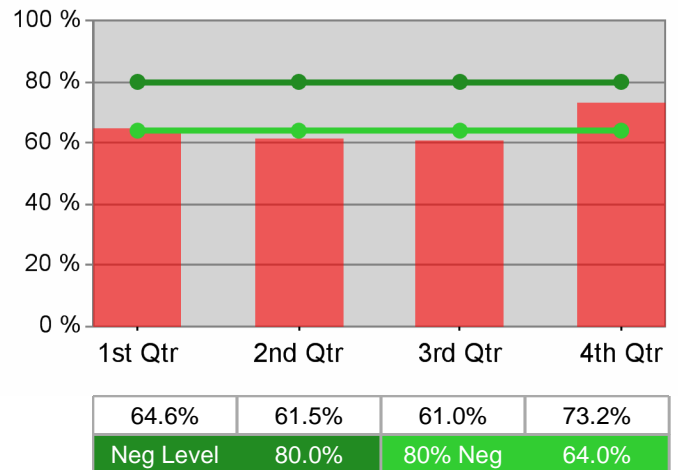
Dislocated Worker Employment



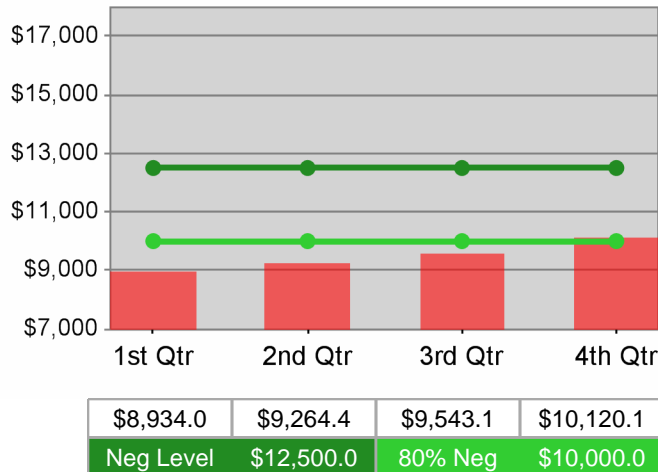
Adult Retention



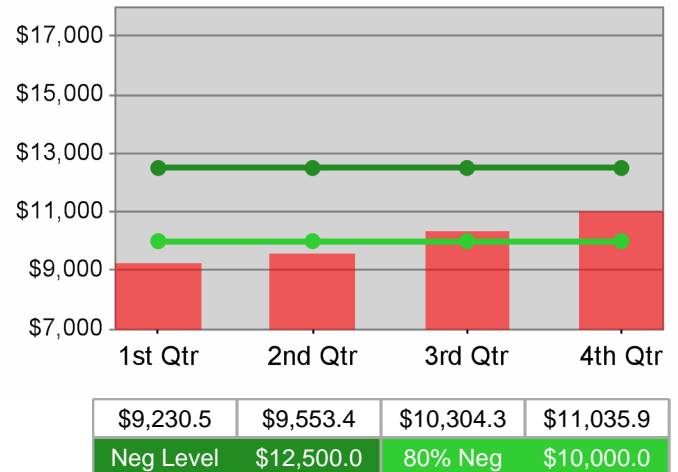
Dislocated Worker Retention



Adult Average Earnings



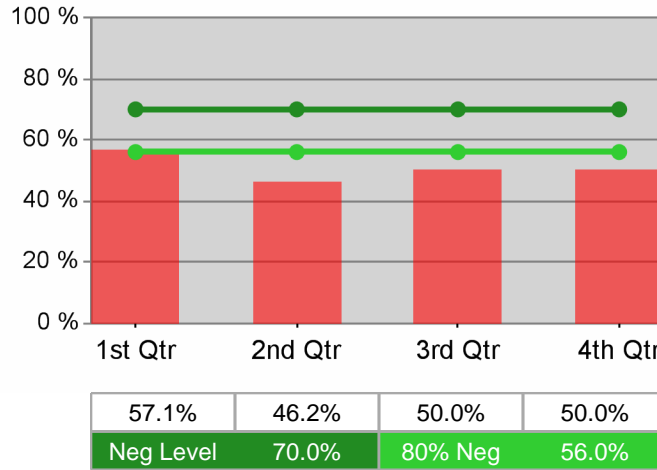
Dislocated Worker Average Earnings



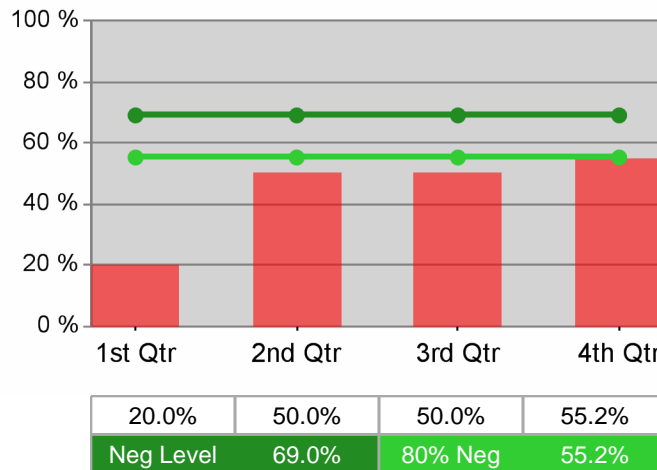
State of Oregon - Department of Community Colleges and Workforce Development

The Oregon Consortium/Workforce Alliance - Training & Employment Consortium - R14  
PY 2010 Year-to-Date

Youth Employment / Education



Youth Degree / Certificate



Youth Numeracy / Literacy

