

WIA Quarterly Report (ETA Form 9090) - Common Exits

**Statewide
PY 2010 Qtr-1**

Cumulative Time Period	Total Participants	Current Quarter (Most Recent)		Cumulative 4-Quarter Reporting Period	
		Value	Numerator Denominator	Value	Numerator Denominator
10/1/2009 - 9/30/2010	Total Adult Customers	94,171		266,862	
	Total Adult self-service only	10,498		55,132	
	WIA Adult	93,205		263,601	
	WIA Dislocated Worker	80,472		208,562	
	Natl Emergency Grant	3,594		4,369	
	Received Training Services	1,510		5,520	
	Received Training Services - Adults	1,384		4,928	
	Received Training Services - Dislocated Workers	1,337		4,732	
	Total Youth (14-21)	2,371		3,432	
	Younger Youth (14-18)	1,715		2,427	
	Older Youth (19-21)	656		1,005	
	Out-of-School Youth	1,167		1,775	
	In-School Youth	1,204		1,657	

Cumulative Time Period	Total Exitors	Current Quarter (Most Recent)		Cumulative 4-Quarter Reporting Period	
		Value	Numerator Denominator	Value	Numerator Denominator
7/1/2009 - 6/30/2010	Total Adult Customers	57,101		230,075	
	Total Adult self-service only	13,263		61,007	
	WIA Adult	56,598		222,910	
	WIA Dislocated Worker	46,784		157,540	
	Natl Emergency Grant	250		975	
	Received Training Services	0		2,077	
	Received Training Services - Adults	0		1,807	
	Received Training Services - Dislocated Workers	0		1,650	
	Total Youth (14-21)	480		1,512	
	Younger Youth (14-18)	335		1,034	
	Older Youth (19-21)	145		478	
	Out-of-School Youth	240		857	
	In-School Youth	240		655	

* Data suppressed for confidentiality purposes

WIA Quarterly Report (ETA Form 9090) - Common Exits

**Statewide
PY 2010 Qtr-1**

Cumulative Time Period	WIA Youth (14-21)	Current Quarter (Most Recent)		Cumulative 4-Qtr Reporting Period		Neg Perf (80%)
		Value	Numerator Denominator	Value	Numerator Denominator	
1/1/2009 - 12/31/2009	Placement in Employment or Education	67.1%	155 231	64.2%	725 1,129	70.0% (56.0%)
1/1/2009 - 12/31/2009	Attainment of a Degree or Certificate	65.8%	127 193	71.4%	722 1,011	69.0% (55.2%)
10/1/2009 - 9/30/2010	Literacy and Numeracy Gains	28.0%	42 150	30.7%	187 610	31.0% (24.8%)

Cumulative Time Period	Entered Employment Rate	Current Quarter (Most Recent)		Cumulative 4-Qtr Reporting Period		Neg Perf (80%)
		Value	Numerator Denominator	Value	Numerator Denominator	
1/1/2009 - 12/31/2009	Adult Program Results	39.9%	12,357 30,989	44.4%	45,504 102,478	57.0% (45.6%)
	Dislocated Worker Program Results	42.0%	7,134 16,979	45.0%	31,242 69,451	57.0% (45.6%)
	Natl Emergency Grant	61.8%	154 249	65.8%	399 606	

Cumulative Time Period	Retention Rate	Current Quarter (Most Recent)		Cumulative 4-Qtr Reporting Period		Neg Perf (80%)
		Value	Numerator Denominator	Value	Numerator Denominator	
7/1/2008 - 6/30/2009	Adult Program Results	74.2%	11,877 16,008	77.3%	27,144 35,112	80.0% (64.0%)
	Dislocated Worker Program Results	72.4%	6,938 9,582	75.1%	15,171 20,196	80.0% (64.0%)
	Natl Emergency Grant	92.8%	77 83	87.7%	293 334	

Cumulative Time Period	Average Earnings	Current Quarter (Most Recent)		Cumulative 4-Qtr Reporting Period		Neg Perf (80%)
		Value	Numerator Denominator	Value	Numerator Denominator	
7/1/2008 - 6/30/2009	Adult Program Results	\$12,403.6	147,317,527 11,877	\$12,756.2	346,189,304 27,139	\$12,500 (\$10,000)
	Dislocated Worker Program Results	\$13,250.1	91,929,104 6,938	\$13,430.9	203,719,881 15,168	\$12,500 (\$10,000)
	Natl Emergency Grant	\$19,268.9	1,483,707 77	\$19,113.7	5,581,209 292	

Performance was Calculated: 11/15/2010 11:56:54 AM

* Data suppressed for confidentiality purposes

State of Oregon - Department of Community Colleges and Workforce Development

Table O - Local Performance (Common Exit)

Program Year 2010 - 1st Qtr (Single Quarter)

Local Area Name: 00 - Statewide

07/01/2010 - 09/30/2010		Served	Exited		
Total Participants	Adults	93,205	56,598		
	DW	80,472	46,784		
	Youth (14-21)	2,371	480		
10/01/2009 - 12/31/2009		N	D	Actual	Negotiated (80%)
Entered Employment Rate	Adults	12,357	30,989	39.9 <i>N</i>	57.0 (45.6)
	DW	7,134	16,979	42.0 <i>N</i>	57.0 (45.6)
	NEG	154	249	61.8	
04/01/2009 - 06/30/2009		N	D	Actual	Negotiated (80%)
Employment Retention Rate	Adults	11,877	16,008	74.2 <i>M</i>	80.0 (64.0)
	DW	6,938	9,582	72.4 <i>M</i>	80.0 (64.0)
	NEG	77	83	92.8	
04/01/2009 - 06/30/2009		N	D	Actual	Negotiated (80%)
Average Earnings	Adults	147,317,527	11,877	12,403.6 <i>M</i>	12,500.0 (10,000.0)
	DW	91,929,104	6,938	13,250.1 <i>E</i>	12,500.0 (10,000.0)
	NEG	1,483,707	77	19,268.9	
10/01/2009 - 12/31/2009		N	D	Actual	Negotiated (80%)
Placement in Employment or Education	Youth (14-21)	155	231	67.1 <i>M</i>	70.0 (56.0)
Attainment of a Degree or Certificate	Youth (14-21)	127	193	65.8 <i>M</i>	69.0 (55.2)
07/01/2010 - 09/30/2010		N	D	Actual	Negotiated (80%)
Literacy and Numeracy Gains	Youth (14-21)	42	150	28.0 <i>M</i>	31.0 (24.8)

<i>Not Met</i>	<i>Met</i>	<i>Exceeded</i>
2	6	1

State of Oregon - Department of Community Colleges and Workforce Development

Table O - Local Performance (Common Exit)

Program Year 2010 - 1st Qtr (Single Quarter)

Local Area Name: 02 - Worksystems Inc

07/01/2010 - 09/30/2010		Served	Exited		
Total Participants	Adults	24,626	9,411		
	DW	22,748	8,541		
	Youth (14-21)	474	104		
10/01/2009 - 12/31/2009		N	D	Actual	Negotiated (80%)
Entered Employment Rate	Adults	3,127	7,262	43.1 <i>N</i>	57.0 (45.6)
	DW	2,997	6,950	43.1 <i>N</i>	57.0 (45.6)
	NEG	*	*	100.0	
04/01/2009 - 06/30/2009		N	D	Actual	Negotiated (80%)
Employment Retention Rate	Adults	2,731	3,501	78.0 <i>M</i>	80.0 (64.0)
	DW	2,360	3,062	77.1 <i>M</i>	80.0 (64.0)
	NEG	0	0		
04/01/2009 - 06/30/2009		N	D	Actual	Negotiated (80%)
Average Earnings	Adults	43,008,197	2,731	15,748.1 <i>E</i>	12,500.0 (10,000.0)
	DW	37,823,633	2,360	16,027.0 <i>E</i>	12,500.0 (10,000.0)
	NEG	0	0		
10/01/2009 - 12/31/2009		N	D	Actual	Negotiated (80%)
Placement in Employment or Education	Youth (14-21)	37	45	82.2 <i>E</i>	70.0 (56.0)
Attainment of a Degree or Certificate	Youth (14-21)	33	41	80.5 <i>E</i>	69.0 (55.2)
07/01/2010 - 09/30/2010		N	D	Actual	Negotiated (80%)
Literacy and Numeracy Gains	Youth (14-21)	11	29	37.9 <i>E</i>	31.0 (24.8)

<i>Not Met</i>	<i>Met</i>	<i>Exceeded</i>
2	2	5

State of Oregon - Department of Community Colleges and Workforce Development

Table O - Local Performance (Common Exit)

Program Year 2010 - 1st Qtr (Single Quarter)

Local Area Name: **03 - Job Growers Incorporated**

07/01/2010 - 09/30/2010		Served	Exited		
Total Participants	Adults	10,805	6,801		
	DW	8,831	5,552		
	Youth (14-21)	336	64		
10/01/2009 - 12/31/2009		N	D	Actual	Negotiated (80%)
Entered Employment Rate	Adults	1,746	4,752	36.7 <i>N</i>	57.0 (45.6)
	DW	544	1,472	37.0 <i>N</i>	57.0 (45.6)
	NEG	25	57	43.9	
04/01/2009 - 06/30/2009		N	D	Actual	Negotiated (80%)
Employment Retention Rate	Adults	1,861	2,590	71.9 <i>M</i>	80.0 (64.0)
	DW	698	1,033	67.6 <i>M</i>	80.0 (64.0)
	NEG	6	7	85.7	
04/01/2009 - 06/30/2009		N	D	Actual	Negotiated (80%)
Average Earnings	Adults	20,670,297	1,861	11,107.1 <i>M</i>	12,500.0 (10,000.0)
	DW	7,399,953	698	10,601.7 <i>M</i>	12,500.0 (10,000.0)
	NEG	71,615	6	11,935.8	
10/01/2009 - 12/31/2009		N	D	Actual	Negotiated (80%)
Placement in Employment or Education	Youth (14-21)	45	56	80.4 <i>E</i>	70.0 (56.0)
	Attainment of a Degree or Certificate	Youth (14-21)	20	27	74.1 <i>E</i>
07/01/2010 - 09/30/2010		N	D	Actual	Negotiated (80%)
Literacy and Numeracy Gains	Youth (14-21)	*	47	8.5 <i>N</i>	31.0 (24.8)

<i>Not Met</i>	<i>Met</i>	<i>Exceeded</i>
3	4	2

State of Oregon - Department of Community Colleges and Workforce Development

Table O - Local Performance (Common Exit)

Program Year 2010 - 1st Qtr (Single Quarter)

Local Area Name: 04 - Community Service Consortium

07/01/2010 - 09/30/2010		Served	Exited		
Total Participants	Adults	8,841	3,595		
	DW	7,744	3,074		
	Youth (14-21)	360	9		
10/01/2009 - 12/31/2009		N	D	Actual	Negotiated (80%)
Entered Employment Rate	Adults	1,027	2,339	43.9 <i>N</i>	57.0 (45.6)
	DW	953	2,169	43.9 <i>N</i>	57.0 (45.6)
	NEG	*	7	57.1	
04/01/2009 - 06/30/2009		N	D	Actual	Negotiated (80%)
Employment Retention Rate	Adults	1,075	1,399	76.8 <i>M</i>	80.0 (64.0)
	DW	803	1,071	75.0 <i>M</i>	80.0 (64.0)
	NEG	7	11	63.6	
04/01/2009 - 06/30/2009		N	D	Actual	Negotiated (80%)
Average Earnings	Adults	13,067,342	1,075	12,155.7 <i>M</i>	12,500.0 (10,000.0)
	DW	9,627,389	803	11,989.3 <i>M</i>	12,500.0 (10,000.0)
	NEG	176,513	7	25,216.1	
10/01/2009 - 12/31/2009		N	D	Actual	Negotiated (80%)
Placement in Employment or Education	Youth (14-21)	11	16	68.8 <i>M</i>	70.0 (56.0)
Attainment of a Degree or Certificate	Youth (14-21)	12	19	63.2 <i>M</i>	69.0 (55.2)
07/01/2010 - 09/30/2010		N	D	Actual	Negotiated (80%)
Literacy and Numeracy Gains	Youth (14-21)	*	14	28.6 <i>M</i>	31.0 (24.8)

<i>Not Met</i>	<i>Met</i>	<i>Exceeded</i>
2	7	0

State of Oregon - Department of Community Colleges and Workforce Development

Table O - Local Performance (Common Exit)

Program Year 2010 - 1st Qtr (Single Quarter)

Local Area Name: 05 - Lane Workforce Partnership

07/01/2010 - 09/30/2010		Served	Exited		
Total Participants	Adults	7,587	4,984		
	DW	6,722	4,248		
	Youth (14-21)	214	39		
10/01/2009 - 12/31/2009		N	D	Actual	Negotiated (80%)
Entered Employment Rate	Adults	1,176	3,211	36.6 <i>N</i>	57.0 (45.6)
	DW	376	983	38.3 <i>N</i>	57.0 (45.6)
	NEG	19	46	41.3	
04/01/2009 - 06/30/2009		N	D	Actual	Negotiated (80%)
Employment Retention Rate	Adults	1,536	2,026	75.8 <i>M</i>	80.0 (64.0)
	DW	729	1,027	71.0 <i>M</i>	80.0 (64.0)
	NEG	22	23	95.7	
04/01/2009 - 06/30/2009		N	D	Actual	Negotiated (80%)
Average Earnings	Adults	17,326,511	1,536	11,280.3 <i>M</i>	12,500.0 (10,000.0)
	DW	8,351,434	729	11,456.0 <i>M</i>	12,500.0 (10,000.0)
	NEG	506,670	22	23,030.5	
10/01/2009 - 12/31/2009		N	D	Actual	Negotiated (80%)
Placement in Employment or Education	Youth (14-21)	7	14	50.0 <i>N</i>	70.0 (56.0)
Attainment of a Degree or Certificate	Youth (14-21)	6	13	46.2 <i>N</i>	69.0 (55.2)
07/01/2010 - 09/30/2010		N	D	Actual	Negotiated (80%)
Literacy and Numeracy Gains	Youth (14-21)	7	12	58.3 <i>E</i>	31.0 (24.8)

<i>Not Met</i>	<i>Met</i>	<i>Exceeded</i>
4	4	1

State of Oregon - Department of Community Colleges and Workforce Development

Table O - Local Performance (Common Exit)

Program Year 2010 - 1st Qtr (Single Quarter)

Local Area Name: 08 - The Job Council

07/01/2010 - 09/30/2010		Served	Exited		
Total Participants	Adults	5,511	3,241		
	DW	4,796	2,840		
	Youth (14-21)	271	28		
10/01/2009 - 12/31/2009		N	D	Actual	Negotiated (80%)
Entered Employment Rate	Adults	882	2,378	37.1 N	57.0 (45.6)
	DW	288	776	37.1 N	57.0 (45.6)
	NEG	0	0		
04/01/2009 - 06/30/2009		N	D	Actual	Negotiated (80%)
Employment Retention Rate	Adults	535	763	70.1 M	80.0 (64.0)
	DW	253	403	62.8 N	80.0 (64.0)
	NEG	0	0		
04/01/2009 - 06/30/2009		N	D	Actual	Negotiated (80%)
Average Earnings	Adults	5,216,359	535	9,750.2 N	12,500.0 (10,000.0)
	DW	2,470,324	253	9,764.1 N	12,500.0 (10,000.0)
	NEG	0	0		
10/01/2009 - 12/31/2009		N	D	Actual	Negotiated (80%)
Placement in Employment or Education	Youth (14-21)	10	18	55.6 N	70.0 (56.0)
Attainment of a Degree or Certificate	Youth (14-21)	6	8	75.0 E	69.0 (55.2)
07/01/2010 - 09/30/2010		N	D	Actual	Negotiated (80%)
Literacy and Numeracy Gains	Youth (14-21)	*	10	30.0 M	31.0 (24.8)

Not Met	Met	Exceeded
6	2	1

State of Oregon - Department of Community Colleges and Workforce Development

Table O - Local Performance (Common Exit)

Program Year 2010 - 1st Qtr (Single Quarter)

Local Area Name: 16 - Workforce Investment Council of Clackamas County

07/01/2010 - 09/30/2010		Served	Exited		
Total Participants	Adults	6,909	2,506		
	DW	6,419	2,310		
	Youth (14-21)	236	56		
10/01/2009 - 12/31/2009		N	D	Actual	Negotiated (80%)
Entered Employment Rate	Adults	796	1,696	46.9 <i>M</i>	57.0 (45.6)
	DW	772	1,635	47.2 <i>M</i>	57.0 (45.6)
	NEG	0	0		
04/01/2009 - 06/30/2009		N	D	Actual	Negotiated (80%)
Employment Retention Rate	Adults	774	975	79.4 <i>M</i>	80.0 (64.0)
	DW	671	854	78.6 <i>M</i>	80.0 (64.0)
	NEG	0	0		
04/01/2009 - 06/30/2009		N	D	Actual	Negotiated (80%)
Average Earnings	Adults	12,829,612	774	16,575.7 <i>E</i>	12,500.0 (10,000.0)
	DW	11,492,064	671	17,126.8 <i>E</i>	12,500.0 (10,000.0)
	NEG	0	0		
10/01/2009 - 12/31/2009		N	D	Actual	Negotiated (80%)
Placement in Employment or Education	Youth (14-21)	15	24	62.5 <i>M</i>	70.0 (56.0)
Attainment of a Degree or Certificate	Youth (14-21)	16	21	76.2 <i>E</i>	69.0 (55.2)
07/01/2010 - 09/30/2010		N	D	Actual	Negotiated (80%)
Literacy and Numeracy Gains	Youth (14-21)	*	8	25.0 <i>M</i>	31.0 (24.8)

<i>Not Met</i>	<i>Met</i>	<i>Exceeded</i>
0	6	3

State of Oregon - Department of Community Colleges and Workforce Development

Table O - Local Performance (Common Exit)

Program Year 2010 - 1st Qtr (Single Quarter)

Local Area Name: 24 - The Oregon Consortium/Workforce Alliance

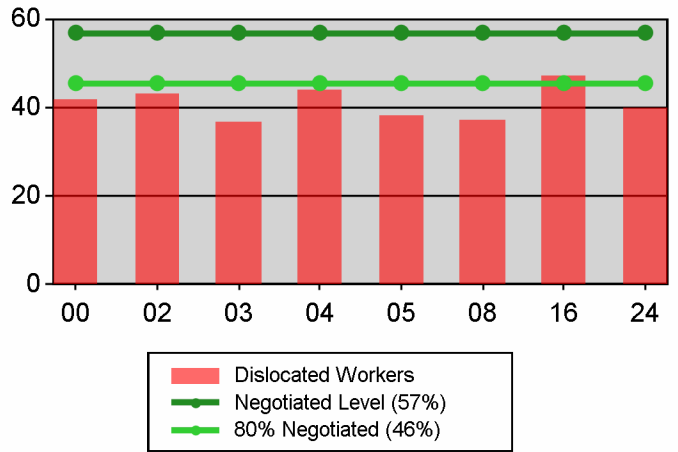
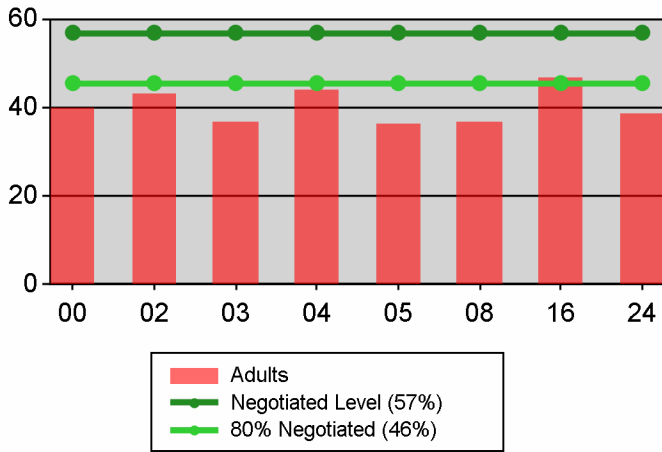
07/01/2010 - 09/30/2010		Served	Exited		
Total Participants	Adults	18,673	13,063		
	DW	15,738	10,596		
	Youth (14-21)	480	180		
10/01/2009 - 12/31/2009		N	D	Actual	Negotiated (80%)
Entered Employment Rate	Adults	3,603	9,351	38.5 <i>N</i>	57.0 (45.6)
	DW	1,204	2,994	40.2 <i>N</i>	57.0 (45.6)
	NEG	105	138	76.1	
04/01/2009 - 06/30/2009		N	D	Actual	Negotiated (80%)
Employment Retention Rate	Adults	3,365	4,754	70.8 <i>M</i>	80.0 (64.0)
	DW	1,424	2,132	66.8 <i>M</i>	80.0 (64.0)
	NEG	42	42	100.0	
04/01/2009 - 06/30/2009		N	D	Actual	Negotiated (80%)
Average Earnings	Adults	35,199,208	3,365	10,460.4 <i>M</i>	12,500.0 (10,000.0)
	DW	14,764,308	1,424	10,368.2 <i>M</i>	12,500.0 (10,000.0)
	NEG	728,909	42	17,355.0	
10/01/2009 - 12/31/2009		N	D	Actual	Negotiated (80%)
Placement in Employment or Education	Youth (14-21)	30	58	51.7 <i>N</i>	70.0 (56.0)
Attainment of a Degree or Certificate	Youth (14-21)	34	64	53.1 <i>N</i>	69.0 (55.2)
07/01/2010 - 09/30/2010		N	D	Actual	Negotiated (80%)
Literacy and Numeracy Gains	Youth (14-21)	11	30	36.7 <i>E</i>	31.0 (24.8)

<i>Not Met</i>	<i>Met</i>	<i>Exceeded</i>
4	4	1

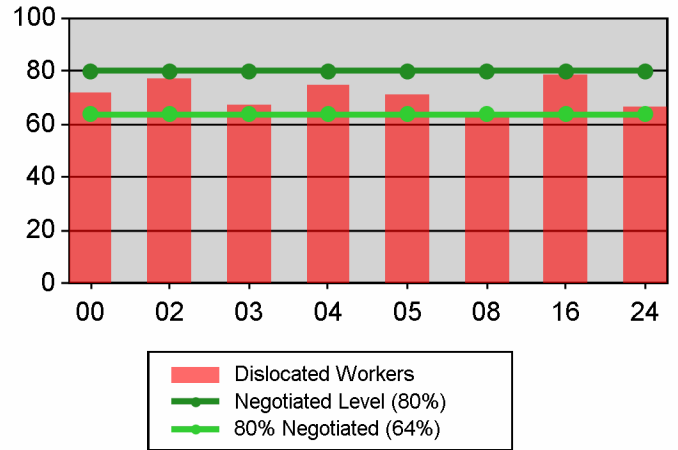
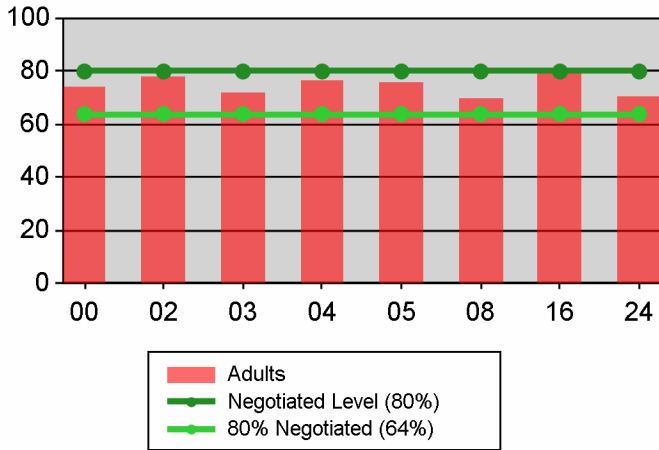
Table O - Local Performance (Common Exit)

Program Year 2010 - 1st Qtr (Single Quarter)

Entered Employment Rate



Retention Rate



Average Earnings

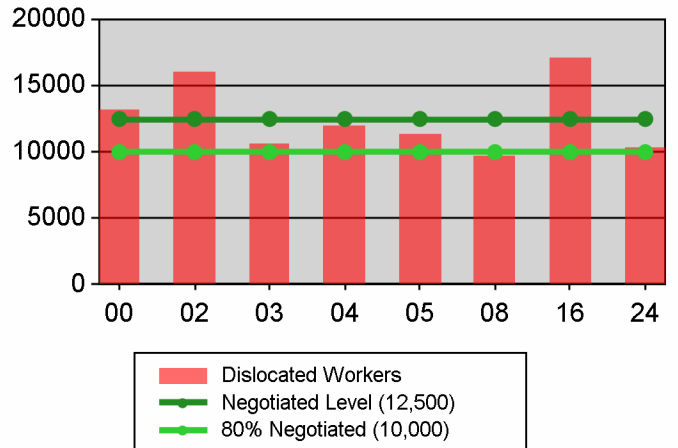
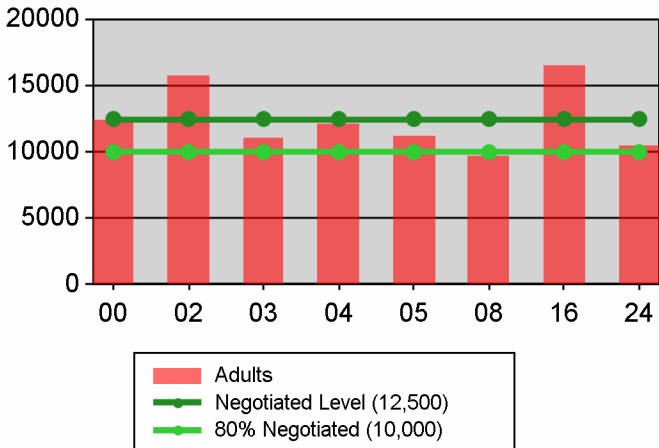
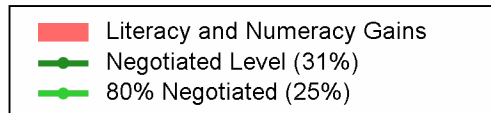
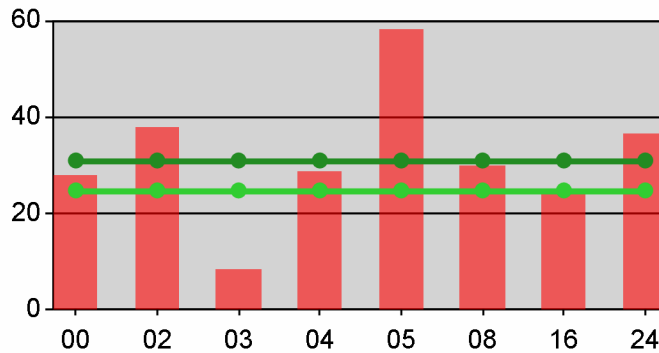
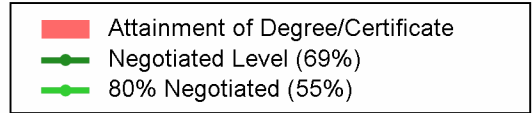
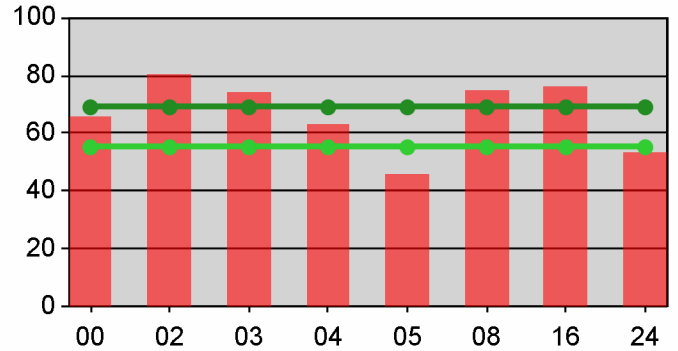
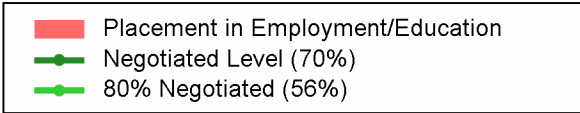
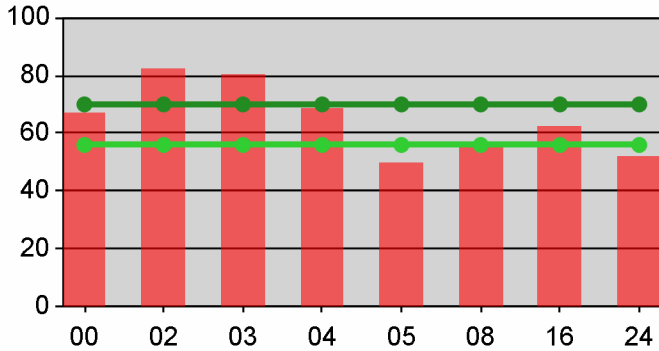


Table O - Local Performance (Common Exit)

Program Year 2010 - 1st Qtr (Single Quarter)

Youth



State of Oregon - Department of Community Colleges and Workforce Development

Table O - Local Performance (Common Exit)

Program Year 2010 - 1st Qtr (Year-to-Date)

Local Area Name: 24 - The Oregon Consortium/Workforce Alliance

07/01/2010 - 09/30/2010		Served	Exited		
Total Participants	Adults	18,673	13,063		
	DW	15,738	10,596		
	Youth (14-21)	480	180		
10/01/2009 - 12/31/2009		N	D	Actual	Negotiated (80%)
Entered Employment Rate	Adults	3,603	9,351	38.5 <i>N</i>	57.0 (45.6)
	DW	1,204	2,994	40.2 <i>N</i>	57.0 (45.6)
	NEG	105	138	76.1	
04/01/2009 - 06/30/2009		N	D	Actual	Negotiated (80%)
Employment Retention Rate	Adults	3,365	4,754	70.8 <i>M</i>	80.0 (64.0)
	DW	1,424	2,132	66.8 <i>M</i>	80.0 (64.0)
	NEG	42	42	100.0	
04/01/2009 - 06/30/2009		N	D	Actual	Negotiated (80%)
Average Earnings	Adults	35,199,208	3,365	10,460.4 <i>M</i>	12,500.0 (10,000.0)
	DW	14,764,308	1,424	10,368.2 <i>M</i>	12,500.0 (10,000.0)
	NEG	728,909	42	17,355.0	
10/01/2009 - 12/31/2009		N	D	Actual	Negotiated (80%)
Placement in Employment or Education	Youth (14-21)	30	58	51.7 <i>N</i>	70.0 (56.0)
	Attainment of a Degree or Certificate	Youth (14-21)	34	64	53.1 <i>N</i>
07/01/2010 - 09/30/2010		N	D	Actual	Negotiated (80%)
Literacy and Numeracy Gains	Youth (14-21)	11	30	36.7 <i>E</i>	31.0 (24.8)

<i>Not Met</i>	<i>Met</i>	<i>Exceeded</i>
4	4	1

State of Oregon - Department of Community Colleges and Workforce Development

Table O - Local Performance (Common Exit)

Program Year 2010 - 1st Qtr (Year-to-Date)

Local Area Name: 240100 - Management Training Corp

07/01/2010 - 09/30/2010		Served	Exited		
Total Participants	Adults	2,416	1,660		
	DW	2,097	1,393		
	Youth (14-21)	42	54		
10/01/2009 - 12/31/2009		N	D	Actual	Negotiated (80%)
Entered Employment Rate	Adults	440	1,216	36.2 N	57.0 (45.6)
	DW	137	384	35.7 N	57.0 (45.6)
	NEG	8	8	100.0	
04/01/2009 - 06/30/2009		N	D	Actual	Negotiated (80%)
Employment Retention Rate	Adults	312	431	72.4 M	80.0 (64.0)
	DW	171	243	70.4 M	80.0 (64.0)
	NEG	15	15	100.0	
04/01/2009 - 06/30/2009		N	D	Actual	Negotiated (80%)
Average Earnings	Adults	3,546,022	312	11,365.5 M	12,500.0 (10,000.0)
	DW	2,010,624	171	11,758.0 M	12,500.0 (10,000.0)
	NEG	432,167	15	28,811.1	
10/01/2009 - 12/31/2009		N	D	Actual	Negotiated (80%)
Placement in Employment or Education	Youth (14-21)	0	0		70.0 (56.0)
	Attainment of a Degree or Certificate	Youth (14-21)	0	*	0.0 N
07/01/2010 - 09/30/2010		N	D	Actual	Negotiated (80%)
Literacy and Numeracy Gains	Youth (14-21)	*	*	100.0 E	31.0 (24.8)

<i>Not Met</i>	<i>Met</i>	<i>Exceeded</i>
3	4	1

State of Oregon - Department of Community Colleges and Workforce Development

Table O - Local Performance (Common Exit)

Program Year 2010 - 1st Qtr (Year-to-Date)

Local Area Name: 240600 - Umpqua Training & Employment

07/01/2010 - 09/30/2010		Served	Exited		
Total Participants	Adults	2,134	1,399		
	DW	1,880	1,150		
	Youth (14-21)	87	16		
10/01/2009 - 12/31/2009		N	D	Actual	Negotiated (80%)
Entered Employment Rate	Adults	380	1,048	36.3 <i>N</i>	57.0 (45.6)
	DW	133	339	39.2 <i>N</i>	57.0 (45.6)
	NEG	0	*	0.0	
04/01/2009 - 06/30/2009		N	D	Actual	Negotiated (80%)
Employment Retention Rate	Adults	344	486	70.8 <i>M</i>	80.0 (64.0)
	DW	168	265	63.4 <i>N</i>	80.0 (64.0)
	NEG	*	*	100.0	
04/01/2009 - 06/30/2009		N	D	Actual	Negotiated (80%)
Average Earnings	Adults	3,795,607	344	11,033.7 <i>M</i>	12,500.0 (10,000.0)
	DW	1,935,405	168	11,520.3 <i>M</i>	12,500.0 (10,000.0)
	NEG	13,603	*	13,603.0	
10/01/2009 - 12/31/2009		N	D	Actual	Negotiated (80%)
Placement in Employment or Education	Youth (14-21)	*	7	57.1 <i>M</i>	70.0 (56.0)
	Attainment of a Degree or Certificate	Youth (14-21)	8	62.5 <i>M</i>	69.0 (55.2)
07/01/2010 - 09/30/2010		N	D	Actual	Negotiated (80%)
Literacy and Numeracy Gains	Youth (14-21)	*	17	11.8 <i>N</i>	31.0 (24.8)

<i>Not Met</i>	<i>Met</i>	<i>Exceeded</i>
4	5	0

State of Oregon - Department of Community Colleges and Workforce Development

Table O - Local Performance (Common Exit)

Program Year 2010 - 1st Qtr (Year-to-Date)

Local Area Name: 240700 - South Coast Business Employment Corp.

07/01/2010 - 09/30/2010		Served	Exited		
Total Participants	Adults	1,991	1,472		
	DW	1,646	1,177		
	Youth (14-21)	38	16		
10/01/2009 - 12/31/2009		N	D	Actual	Negotiated (80%)
Entered Employment Rate	Adults	331	824	40.2 <i>N</i>	57.0 (45.6)
	DW	88	248	35.5 <i>N</i>	57.0 (45.6)
	NEG	0	0		
04/01/2009 - 06/30/2009		N	D	Actual	Negotiated (80%)
Employment Retention Rate	Adults	297	423	70.2 <i>M</i>	80.0 (64.0)
	DW	131	199	65.8 <i>M</i>	80.0 (64.0)
	NEG	*	*	100.0	
04/01/2009 - 06/30/2009		N	D	Actual	Negotiated (80%)
Average Earnings	Adults	2,823,504	297	9,506.7 <i>N</i>	12,500.0 (10,000.0)
	DW	1,078,724	131	8,234.5 <i>N</i>	12,500.0 (10,000.0)
	NEG	14,558	*	14,558.0	
10/01/2009 - 12/31/2009		N	D	Actual	Negotiated (80%)
Placement in Employment or Education	Youth (14-21)	6	9	66.7 <i>M</i>	70.0 (56.0)
	Attainment of a Degree or Certificate	Youth (14-21)	10	13	76.9 <i>E</i>
07/01/2010 - 09/30/2010		N	D	Actual	Negotiated (80%)
Literacy and Numeracy Gains	Youth (14-21)	*	*	66.7 <i>E</i>	31.0 (24.8)

<i>Not Met</i>	<i>Met</i>	<i>Exceeded</i>
4	3	2

State of Oregon - Department of Community Colleges and Workforce Development

Table O - Local Performance (Common Exit)

Program Year 2010 - 1st Qtr (Year-to-Date)

Local Area Name: 240900 - Mid-Columbia Council Of Governments

07/01/2010 - 09/30/2010		Served	Exited		
Total Participants	Adults	1,150	767		
	DW	940	617		
	Youth (14-21)	17	18		
10/01/2009 - 12/31/2009		N	D	Actual	Negotiated (80%)
Entered Employment Rate	Adults	193	460	42.0 N	57.0 (45.6)
	DW	53	138	38.4 N	57.0 (45.6)
	NEG	0	0		
04/01/2009 - 06/30/2009		N	D	Actual	Negotiated (80%)
Employment Retention Rate	Adults	219	304	72.0 M	80.0 (64.0)
	DW	78	117	66.7 M	80.0 (64.0)
	NEG	0	0		
04/01/2009 - 06/30/2009		N	D	Actual	Negotiated (80%)
Average Earnings	Adults	2,030,266	219	9,270.6 N	12,500.0 (10,000.0)
	DW	730,077	78	9,360.0 N	12,500.0 (10,000.0)
	NEG	0	0		
10/01/2009 - 12/31/2009		N	D	Actual	Negotiated (80%)
Placement in Employment or Education	Youth (14-21)	*	*	25.0 N	70.0 (56.0)
	Attainment of a Degree or Certificate	Youth (14-21)	*	*	50.0 N
07/01/2010 - 09/30/2010		N	D	Actual	Negotiated (80%)
Literacy and Numeracy Gains	Youth (14-21)	0	*	0.0 N	31.0 (24.8)

<i>Not Met</i>	<i>Met</i>	<i>Exceeded</i>
7	2	0

State of Oregon - Department of Community Colleges and Workforce Development

Table O - Local Performance (Common Exit)

Program Year 2010 - 1st Qtr (Year-to-Date)

Local Area Name: 241000 - Central Oregon Intergovernment Council

07/01/2010 - 09/30/2010		Served	Exited		
Total Participants	Adults	5,033	3,312		
	DW	4,457	2,815		
	Youth (14-21)	78	36		
10/01/2009 - 12/31/2009		N	D	Actual	Negotiated (80%)
Entered Employment Rate	Adults	967	2,690	35.9 <i>N</i>	57.0 (45.6)
	DW	329	825	39.9 <i>N</i>	57.0 (45.6)
	NEG	13	31	41.9	
04/01/2009 - 06/30/2009		N	D	Actual	Negotiated (80%)
Employment Retention Rate	Adults	763	1,100	69.4 <i>M</i>	80.0 (64.0)
	DW	375	558	67.2 <i>M</i>	80.0 (64.0)
	NEG	12	12	100.0	
04/01/2009 - 06/30/2009		N	D	Actual	Negotiated (80%)
Average Earnings	Adults	8,384,748	763	10,989.2 <i>M</i>	12,500.0 (10,000.0)
	DW	4,081,798	375	10,884.8 <i>M</i>	12,500.0 (10,000.0)
	NEG	144,227	12	12,018.9	
10/01/2009 - 12/31/2009		N	D	Actual	Negotiated (80%)
Placement in Employment or Education	Youth (14-21)	*	12	41.7 <i>N</i>	70.0 (56.0)
	Attainment of a Degree or Certificate	Youth (14-21)	9	14	64.3 <i>M</i>
07/01/2010 - 09/30/2010		N	D	Actual	Negotiated (80%)
Literacy and Numeracy Gains	Youth (14-21)	*	*	75.0 <i>E</i>	31.0 (24.8)

<i>Not Met</i>	<i>Met</i>	<i>Exceeded</i>
3	5	1

State of Oregon - Department of Community Colleges and Workforce Development

Table O - Local Performance (Common Exit)

Program Year 2010 - 1st Qtr (Year-to-Date)

Local Area Name: 241100 - Central OR Intergovt Council - Klamath & Lake

07/01/2010 - 09/30/2010		Served	Exited		
Total Participants	Adults	1,642	1,065		
	DW	1,389	869		
	Youth (14-21)	87	12		
10/01/2009 - 12/31/2009		N	D	Actual	Negotiated (80%)
Entered Employment Rate	Adults	301	827	36.4 N	57.0 (45.6)
	DW	119	303	39.3 N	57.0 (45.6)
	NEG	0	0		
04/01/2009 - 06/30/2009		N	D	Actual	Negotiated (80%)
Employment Retention Rate	Adults	191	315	60.6 N	80.0 (64.0)
	DW	86	132	65.2 M	80.0 (64.0)
	NEG	0	0		
04/01/2009 - 06/30/2009		N	D	Actual	Negotiated (80%)
Average Earnings	Adults	1,939,061	191	10,152.2 M	12,500.0 (10,000.0)
	DW	783,984	86	9,116.1 N	12,500.0 (10,000.0)
	NEG	0	0		
10/01/2009 - 12/31/2009		N	D	Actual	Negotiated (80%)
Placement in Employment or Education	Youth (14-21)	6	10	60.0 M	70.0 (56.0)
	Attainment of a Degree or Certificate	Youth (14-21)	*	12	25.0 N
07/01/2010 - 09/30/2010		N	D	Actual	Negotiated (80%)
Literacy and Numeracy Gains	Youth (14-21)	*	*	100.0 E	31.0 (24.8)

<i>Not Met</i>	<i>Met</i>	<i>Exceeded</i>
5	3	1

State of Oregon - Department of Community Colleges and Workforce Development

Table O - Local Performance (Common Exit)

Program Year 2010 - 1st Qtr (Year-to-Date)

Local Area Name: 241200 - Community Action Programs of East Central Oregon

07/01/2010 - 09/30/2010		Served	Exited		
Total Participants	Adults	1,939	1,615		
	DW	1,468	1,198		
	Youth (14-21)	80	16		
10/01/2009 - 12/31/2009		N	D	Actual	Negotiated (80%)
Entered Employment Rate	Adults	466	1,036	45.0 N	57.0 (45.6)
	DW	135	300	45.0 N	57.0 (45.6)
	NEG	7	9	77.8	
04/01/2009 - 06/30/2009		N	D	Actual	Negotiated (80%)
Employment Retention Rate	Adults	575	800	71.9 M	80.0 (64.0)
	DW	168	263	63.9 N	80.0 (64.0)
	NEG	*	*	100.0	
04/01/2009 - 06/30/2009		N	D	Actual	Negotiated (80%)
Average Earnings	Adults	6,379,322	575	11,094.5 M	12,500.0 (10,000.0)
	DW	1,642,216	168	9,775.1 N	12,500.0 (10,000.0)
	NEG	43,052	*	8,610.4	
10/01/2009 - 12/31/2009		N	D	Actual	Negotiated (80%)
Placement in Employment or Education	Youth (14-21)	*	6	33.3 N	70.0 (56.0)
Attainment of a Degree or Certificate	Youth (14-21)	*	6	50.0 N	69.0 (55.2)
07/01/2010 - 09/30/2010		N	D	Actual	Negotiated (80%)
Literacy and Numeracy Gains	Youth (14-21)	0	*	0.0 N	31.0 (24.8)

<i>Not Met</i>	<i>Met</i>	<i>Exceeded</i>
7	2	0

State of Oregon - Department of Community Colleges and Workforce Development

Table O - Local Performance (Common Exit)

Program Year 2010 - 1st Qtr (Year-to-Date)

Local Area Name: 241300 - Training & Employment Consortium - R13

07/01/2010 - 09/30/2010		Served	Exited		
Total Participants	Adults	1,219	915		
	DW	954	713		
	Youth (14-21)	30	*		
10/01/2009 - 12/31/2009		N	D	Actual	Negotiated (80%)
Entered Employment Rate	Adults	262	613	42.7 <i>N</i>	57.0 (45.6)
	DW	124	262	47.3 <i>M</i>	57.0 (45.6)
	NEG	77	87	88.5	
04/01/2009 - 06/30/2009		N	D	Actual	Negotiated (80%)
Employment Retention Rate	Adults	341	455	74.9 <i>M</i>	80.0 (64.0)
	DW	123	163	75.5 <i>M</i>	80.0 (64.0)
	NEG	8	8	100.0	
04/01/2009 - 06/30/2009		N	D	Actual	Negotiated (80%)
Average Earnings	Adults	3,415,000	341	10,014.7 <i>M</i>	12,500.0 (10,000.0)
	DW	1,356,894	123	11,031.7 <i>M</i>	12,500.0 (10,000.0)
	NEG	81,301	8	10,162.6	
10/01/2009 - 12/31/2009		N	D	Actual	Negotiated (80%)
Placement in Employment or Education	Youth (14-21)	*	*	66.7 <i>M</i>	70.0 (56.0)
	Attainment of a Degree or Certificate	Youth (14-21)	*	*	66.7 <i>M</i>
07/01/2010 - 09/30/2010		N	D	Actual	Negotiated (80%)
Literacy and Numeracy Gains	Youth (14-21)	0	0		31.0 (24.8)

<i>Not Met</i>	<i>Met</i>	<i>Exceeded</i>
1	7	0

State of Oregon - Department of Community Colleges and Workforce Development

Table O - Local Performance (Common Exit)

Program Year 2010 - 1st Qtr (Year-to-Date)

Local Area Name: 241400 - Training & Employment Consortium - R14

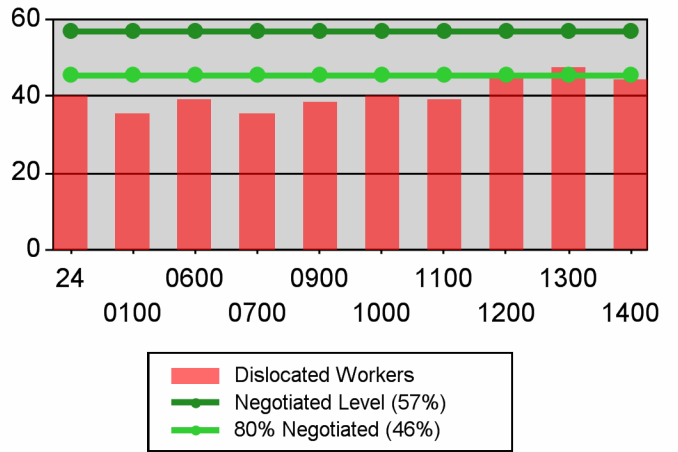
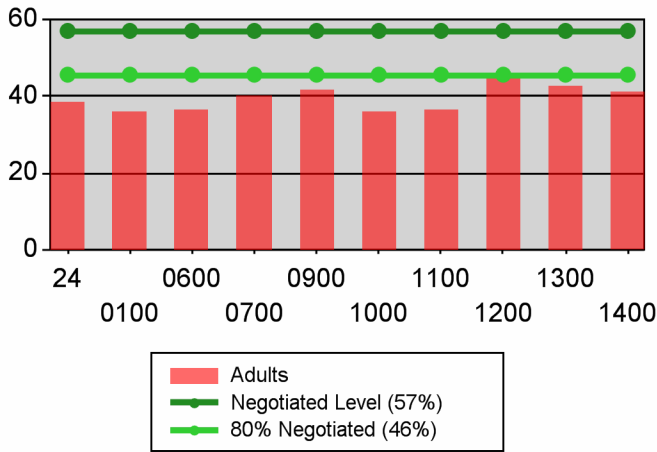
07/01/2010 - 09/30/2010		Served	Exited		
Total Participants	Adults	1,149	858		
	DW	907	664		
	Youth (14-21)	21	8		
10/01/2009 - 12/31/2009		N	D	Actual	Negotiated (80%)
Entered Employment Rate	Adults	263	637	41.3 <i>N</i>	57.0 (45.6)
	DW	86	195	44.1 <i>N</i>	57.0 (45.6)
	NEG	0	*	0.0	
04/01/2009 - 06/30/2009		N	D	Actual	Negotiated (80%)
Employment Retention Rate	Adults	323	440	73.4 <i>M</i>	80.0 (64.0)
	DW	124	192	64.6 <i>M</i>	80.0 (64.0)
	NEG	0	0		
04/01/2009 - 06/30/2009		N	D	Actual	Negotiated (80%)
Average Earnings	Adults	2,885,677	323	8,934.0 <i>N</i>	12,500.0 (10,000.0)
	DW	1,144,587	124	9,230.5 <i>N</i>	12,500.0 (10,000.0)
	NEG	0	0		
10/01/2009 - 12/31/2009		N	D	Actual	Negotiated (80%)
Placement in Employment or Education	Youth (14-21)	*	7	57.1 <i>M</i>	70.0 (56.0)
Attainment of a Degree or Certificate	Youth (14-21)	*	*	20.0 <i>N</i>	69.0 (55.2)
07/01/2010 - 09/30/2010		N	D	Actual	Negotiated (80%)
Literacy and Numeracy Gains	Youth (14-21)	*	*	100.0 <i>E</i>	31.0 (24.8)

<i>Not Met</i>	<i>Met</i>	<i>Exceeded</i>
5	3	1

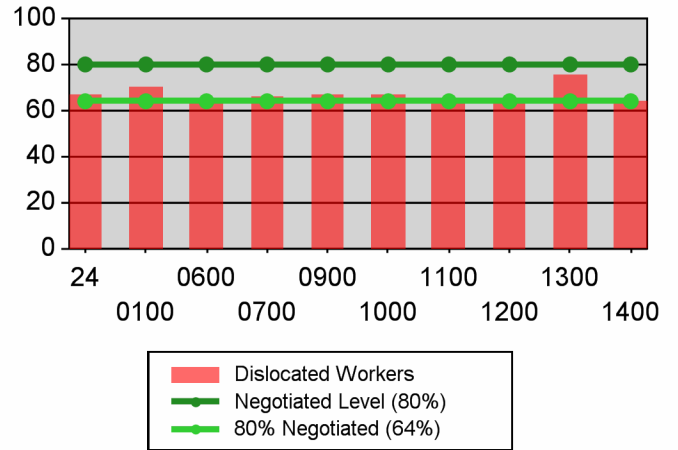
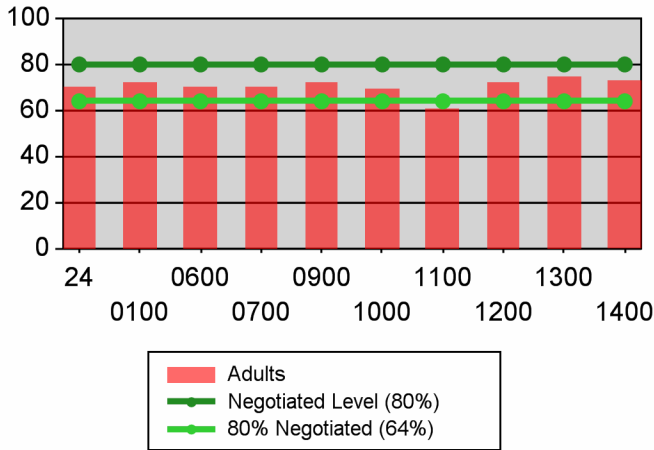
Table O - Local Performance (Common Exit)

Program Year 2010 - 1st Qtr (Year-to-Date)

Entered Employment Rate



Retention Rate



Average Earnings

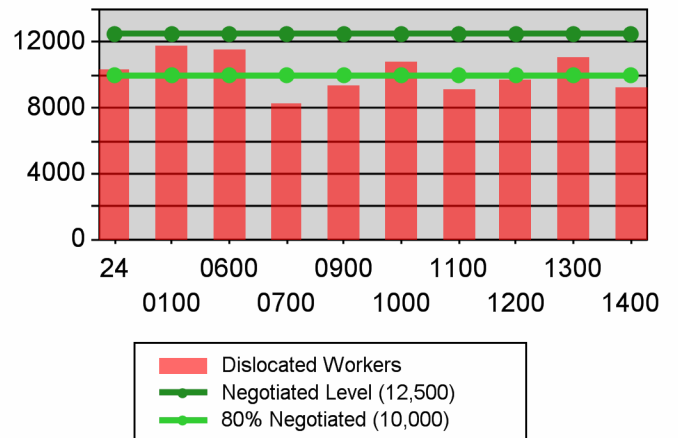
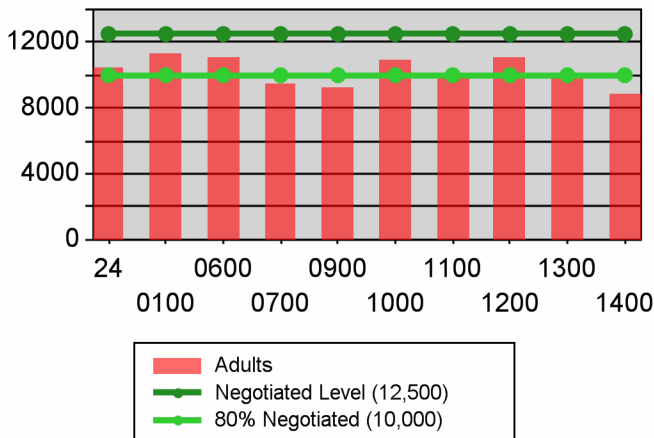


Table O - Local Performance (Common Exit)

Program Year 2010 - 1st Qtr (Year-to-Date)

Youth

