

WIA Quarterly Report (ETA Form 9090) - Common Exits

**Statewide
PY 2010 Qtr-2**

Cumulative Time Period	Total Participants	Current Quarter (Most Recent)		Cumulative 4-Quarter Reporting Period	
		Value	Numerator Denominator	Value	Numerator Denominator
1/1/2010 - 12/31/2010	Total Adult Customers	123,596		360,736	
	Total Adult self-service only	28,472		134,235	
	WIA Adult	122,665		358,069	
	WIA Dislocated Worker	108,091		299,297	
	Natl Emergency Grant	2,764		4,253	
	Received Training Services	1,033		5,507	
	Received Training Services - Adults	986		5,028	
	Received Training Services - Dislocated Workers	880		4,752	
	Total Youth (14-21)	2,339		3,489	
	Younger Youth (14-18)	1,692		2,502	
	Older Youth (19-21)	647		987	
	Out-of-School Youth	1,134		1,735	
	In-School Youth	1,205		1,754	

Cumulative Time Period	Total Exitors	Current Quarter (Most Recent)		Cumulative 4-Quarter Reporting Period	
		Value	Numerator Denominator	Value	Numerator Denominator
10/1/2009 - 9/30/2010	Total Adult Customers	75,284		310,909	
	Total Adult self-service only	31,715		141,217	
	WIA Adult	74,762		307,747	
	WIA Dislocated Worker	61,221		237,770	
	Natl Emergency Grant	663		1,896	
	Received Training Services	534		3,022	
	Received Training Services - Adults	482		2,680	
	Received Training Services - Dislocated Workers	441		2,437	
	Total Youth (14-21)	354		1,465	
	Younger Youth (14-18)	255		1,009	
	Older Youth (19-21)	99		456	
	Out-of-School Youth	167		797	
	In-School Youth	187		668	

* Data suppressed for confidentiality purposes

WIA Quarterly Report (ETA Form 9090) - Common Exits

**Statewide
PY 2010 Qtr-2**

Cumulative Time Period	WIA Youth (14-21)	Current Quarter (Most Recent)		Cumulative 4-Qtr Reporting Period		Neg Perf (80%)
		Value	Numerator Denominator	Value	Numerator Denominator	
4/1/2009 - 3/31/2010	Placement in Employment or Education	71.2%	158 222	65.7%	755 1,149	70.0% (56.0%)
4/1/2009 - 3/31/2010	Attainment of a Degree or Certificate	68.3%	123 180	71.0%	723 1,018	69.0% (55.2%)
1/1/2010 - 12/31/2010	Literacy and Numeracy Gains	51.3%	77 150	37.2%	226 608	31.0% (24.8%)

Cumulative Time Period	Entered Employment Rate	Current Quarter (Most Recent)		Cumulative 4-Qtr Reporting Period		Neg Perf (80%)
		Value	Numerator Denominator	Value	Numerator Denominator	
4/1/2009 - 3/31/2010	Adult Program Results	48.0%	17,465 36,417	45.4%	54,446 119,807	57.0% (45.6%)
	Dislocated Worker Program Results	47.7%	15,585 32,686	46.1%	39,748 86,192	57.0% (45.6%)
	Natl Emergency Grant	59.5%	176 296	60.4%	565 936	

Cumulative Time Period	Retention Rate	Current Quarter (Most Recent)		Cumulative 4-Qtr Reporting Period		Neg Perf (80%)
		Value	Numerator Denominator	Value	Numerator Denominator	
10/1/2008 - 9/30/2009	Adult Program Results	76.9%	13,805 17,944	77.4%	39,449 50,995	80.0% (64.0%)
	Dislocated Worker Program Results	78.0%	6,529 8,374	76.3%	21,123 27,693	80.0% (64.0%)
	Natl Emergency Grant	91.6%	131 143	89.9%	374 416	

Cumulative Time Period	Average Earnings	Current Quarter (Most Recent)		Cumulative 4-Qtr Reporting Period		Neg Perf (80%)
		Value	Numerator Denominator	Value	Numerator Denominator	
10/1/2008 - 9/30/2009	Adult Program Results	\$11,783.5	162,659,827 13,804	\$12,501.1	493,130,116 39,447	\$12,500 (\$10,000)
	Dislocated Worker Program Results	\$13,287.6	86,754,770 6,529	\$13,464.4	284,381,330 21,121	\$12,500 (\$10,000)
	Natl Emergency Grant	\$15,831.7	2,073,950 131	\$18,841.1	7,046,583 374	

Performance was Calculated: 2/9/2011 2:20:47 PM

* Data suppressed for confidentiality purposes

State of Oregon - Department of Community Colleges and Workforce Development

Table O - Local Performance (Common Exit)

Program Year 2010 - 2nd Qtr (Year-to-Date)

Local Area Name: 00 - Statewide

07/01/2010 - 12/31/2010		Served	Exited		
Total Participants	Adults	197,427	152,796		
	DW	169,312	124,507		
	Youth (14-21)	2,693	869		
10/01/2009 - 03/31/2010		N	D	Actual	Negotiated (80%)
Entered Employment Rate	Adults	29,891	67,184	44.5 <i>N</i>	57.0 (45.6)
	DW	22,746	49,589	45.9 <i>M</i>	57.0 (45.6)
	NEG	368	650	56.6	
04/01/2009 - 09/30/2009		N	D	Actual	Negotiated (80%)
Employment Retention Rate	Adults	25,755	33,999	75.8 <i>M</i>	80.0 (64.0)
	DW	13,579	18,053	75.2 <i>M</i>	80.0 (64.0)
	NEG	208	227	91.6	
04/01/2009 - 09/30/2009		N	D	Actual	Negotiated (80%)
Average Earnings	Adults	311,419,913	25,754	12,092.1 <i>M</i>	12,500.0 (10,000.0)
	DW	180,128,275	13,578	13,266.2 <i>E</i>	12,500.0 (10,000.0)
	NEG	3,532,726	208	16,984.3	
10/01/2009 - 03/31/2010		N	D	Actual	Negotiated (80%)
Placement in Employment or Education	Youth (14-21)	317	460	68.9 <i>M</i>	70.0 (56.0)
Attainment of a Degree or Certificate	Youth (14-21)	259	385	67.3 <i>M</i>	69.0 (55.2)
07/01/2010 - 12/31/2010		N	D	Actual	Negotiated (80%)
Literacy and Numeracy Gains	Youth (14-21)	129	294	43.9 <i>E</i>	31.0 (24.8)

<i>Not Met</i>	<i>Met</i>	<i>Exceeded</i>
1	6	2

State of Oregon - Department of Community Colleges and Workforce Development

Table O - Local Performance (Common Exit)

Program Year 2010 - 2nd Qtr (Year-to-Date)

Local Area Name: **02 - Worksystems Inc**

07/01/2010 - 12/31/2010		Served	Exited		
Total Participants	Adults	37,730	19,935		
	DW	34,872	18,129		
	Youth (14-21)	565	188		
10/01/2009 - 03/31/2010		N	D	Actual	Negotiated (80%)
Entered Employment Rate	Adults	6,907	15,173	45.5 <i>N</i>	57.0 (45.6)
	DW	6,578	14,441	45.6 <i>M</i>	57.0 (45.6)
	NEG	8	8	100.0	
04/01/2009 - 09/30/2009		N	D	Actual	Negotiated (80%)
Employment Retention Rate	Adults	5,994	7,594	78.9 <i>M</i>	80.0 (64.0)
	DW	5,273	6,717	78.5 <i>M</i>	80.0 (64.0)
	NEG	0	0		
04/01/2009 - 09/30/2009		N	D	Actual	Negotiated (80%)
Average Earnings	Adults	90,816,516	5,994	15,151.2 <i>E</i>	12,500.0 (10,000.0)
	DW	81,370,988	5,273	15,431.6 <i>E</i>	12,500.0 (10,000.0)
	NEG	0	0		
10/01/2009 - 03/31/2010		N	D	Actual	Negotiated (80%)
Placement in Employment or Education	Youth (14-21)	78	100	78.0 <i>E</i>	70.0 (56.0)
Attainment of a Degree or Certificate	Youth (14-21)	74	98	75.5 <i>E</i>	69.0 (55.2)
07/01/2010 - 12/31/2010		N	D	Actual	Negotiated (80%)
Literacy and Numeracy Gains	Youth (14-21)	27	54	50.0 <i>E</i>	31.0 (24.8)

<i>Not Met</i>	<i>Met</i>	<i>Exceeded</i>
1	3	5

State of Oregon - Department of Community Colleges and Workforce Development

Table O - Local Performance (Common Exit)

Program Year 2010 - 2nd Qtr (Year-to-Date)

Local Area Name: 03 - Job Growers Incorporated

07/01/2010 - 12/31/2010		Served	Exited
Total Participants	Adults	18,801	13,165
	DW	15,878	10,735
	Youth (14-21)	393	110

10/01/2009 - 03/31/2010		N	D	Actual	Negotiated (80%)
Entered Employment Rate	Adults	4,353	10,261	42.4 <i>N</i>	57.0 (45.6)
	DW	2,733	6,177	44.2 <i>N</i>	57.0 (45.6)
	NEG	32	66	48.5	

04/01/2009 - 09/30/2009		N	D	Actual	Negotiated (80%)
Employment Retention Rate	Adults	4,012	5,368	74.7 <i>M</i>	80.0 (64.0)
	DW	1,099	1,542	71.3 <i>M</i>	80.0 (64.0)
	NEG	19	20	95.0	

04/01/2009 - 09/30/2009		N	D	Actual	Negotiated (80%)
Average Earnings	Adults	43,881,128	4,012	10,937.5 <i>M</i>	12,500.0 (10,000.0)
	DW	11,661,955	1,099	10,611.4 <i>M</i>	12,500.0 (10,000.0)
	NEG	212,771	19	11,198.5	

10/01/2009 - 03/31/2010		N	D	Actual	Negotiated (80%)
Placement in Employment or Education	Youth (14-21)	76	96	79.2 <i>E</i>	70.0 (56.0)
Attainment of a Degree or Certificate	Youth (14-21)	38	50	76.0 <i>E</i>	69.0 (55.2)

07/01/2010 - 12/31/2010		N	D	Actual	Negotiated (80%)
Literacy and Numeracy Gains	Youth (14-21)	8	52	15.4 <i>N</i>	31.0 (24.8)

<i>Not Met</i>	<i>Met</i>	<i>Exceeded</i>
3	4	2

State of Oregon - Department of Community Colleges and Workforce Development

Table O - Local Performance (Common Exit)

Program Year 2010 - 2nd Qtr (Year-to-Date)

Local Area Name: **04 - Community Service Consortium**

07/01/2010 - 12/31/2010		Served	Exited		
Total Participants	Adults	12,298	7,081		
	DW	10,850	6,057		
	Youth (14-21)	359	53		
10/01/2009 - 03/31/2010		N	D	Actual	Negotiated (80%)
Entered Employment Rate	Adults	2,479	5,181	47.8 <i>M</i>	57.0 (45.6)
	DW	2,282	4,781	47.7 <i>M</i>	57.0 (45.6)
	NEG	*	12	41.7	
04/01/2009 - 09/30/2009		N	D	Actual	Negotiated (80%)
Employment Retention Rate	Adults	2,220	2,835	78.3 <i>M</i>	80.0 (64.0)
	DW	1,697	2,212	76.7 <i>M</i>	80.0 (64.0)
	NEG	9	14	64.3	
04/01/2009 - 09/30/2009		N	D	Actual	Negotiated (80%)
Average Earnings	Adults	26,533,063	2,220	11,951.8 <i>M</i>	12,500.0 (10,000.0)
	DW	20,068,845	1,697	11,826.1 <i>M</i>	12,500.0 (10,000.0)
	NEG	192,807	9	21,423.0	
10/01/2009 - 03/31/2010		N	D	Actual	Negotiated (80%)
Placement in Employment or Education	Youth (14-21)	17	25	68.0 <i>M</i>	70.0 (56.0)
Attainment of a Degree or Certificate	Youth (14-21)	17	28	60.7 <i>M</i>	69.0 (55.2)
07/01/2010 - 12/31/2010		N	D	Actual	Negotiated (80%)
Literacy and Numeracy Gains	Youth (14-21)	17	41	41.5 <i>E</i>	31.0 (24.8)

<i>Not Met</i>	<i>Met</i>	<i>Exceeded</i>
0	8	1

State of Oregon - Department of Community Colleges and Workforce Development

Table O - Local Performance (Common Exit)

Program Year 2010 - 2nd Qtr (Year-to-Date)

Local Area Name: **05 - Lane Workforce Partnership**

07/01/2010 - 12/31/2010		Served	Exited		
Total Participants	Adults	12,886	9,342		
	DW	11,461	8,070		
	Youth (14-21)	256	58		
10/01/2009 - 03/31/2010		N	D	Actual	Negotiated (80%)
Entered Employment Rate	Adults	3,129	7,558	41.4 <i>N</i>	57.0 (45.6)
	DW	2,061	4,812	42.8 <i>N</i>	57.0 (45.6)
	NEG	134	298	45.0	
04/01/2009 - 09/30/2009		N	D	Actual	Negotiated (80%)
Employment Retention Rate	Adults	3,028	3,939	76.9 <i>M</i>	80.0 (64.0)
	DW	1,107	1,508	73.4 <i>M</i>	80.0 (64.0)
	NEG	41	45	91.1	
04/01/2009 - 09/30/2009		N	D	Actual	Negotiated (80%)
Average Earnings	Adults	32,687,746	3,028	10,795.2 <i>M</i>	12,500.0 (10,000.0)
	DW	12,482,512	1,107	11,276.0 <i>M</i>	12,500.0 (10,000.0)
	NEG	877,275	41	21,397.0	
10/01/2009 - 03/31/2010		N	D	Actual	Negotiated (80%)
Placement in Employment or Education	Youth (14-21)	19	28	67.9 <i>M</i>	70.0 (56.0)
Attainment of a Degree or Certificate	Youth (14-21)	14	23	60.9 <i>M</i>	69.0 (55.2)
07/01/2010 - 12/31/2010		N	D	Actual	Negotiated (80%)
Literacy and Numeracy Gains	Youth (14-21)	17	23	73.9 <i>E</i>	31.0 (24.8)

<i>Not Met</i>	<i>Met</i>	<i>Exceeded</i>
2	6	1

State of Oregon - Department of Community Colleges and Workforce Development

Table O - Local Performance (Common Exit)

Program Year 2010 - 2nd Qtr (Year-to-Date)

Local Area Name: **08 - The Job Council**

07/01/2010 - 12/31/2010		Served	Exited		
Total Participants	Adults	9,097	6,690		
	DW	8,051	5,822		
	Youth (14-21)	257	75		
10/01/2009 - 03/31/2010		N	D	Actual	Negotiated (80%)
Entered Employment Rate	Adults	2,171	5,379	40.4 <i>N</i>	57.0 (45.6)
	DW	1,472	3,504	42.0 <i>N</i>	57.0 (45.6)
	NEG	14	21	66.7	
04/01/2009 - 09/30/2009		N	D	Actual	Negotiated (80%)
Employment Retention Rate	Adults	1,300	1,883	69.0 <i>M</i>	80.0 (64.0)
	DW	413	662	62.4 <i>N</i>	80.0 (64.0)
	NEG	0	0		
04/01/2009 - 09/30/2009		N	D	Actual	Negotiated (80%)
Average Earnings	Adults	12,417,325	1,300	9,551.8 <i>N</i>	12,500.0 (10,000.0)
	DW	3,940,993	413	9,542.4 <i>N</i>	12,500.0 (10,000.0)
	NEG	0	0		
10/01/2009 - 03/31/2010		N	D	Actual	Negotiated (80%)
Placement in Employment or Education	Youth (14-21)	23	40	57.5 <i>M</i>	70.0 (56.0)
Attainment of a Degree or Certificate	Youth (14-21)	11	20	55.0 <i>N</i>	69.0 (55.2)
07/01/2010 - 12/31/2010		N	D	Actual	Negotiated (80%)
Literacy and Numeracy Gains	Youth (14-21)	20	46	43.5 <i>E</i>	31.0 (24.8)

<i>Not Met</i>	<i>Met</i>	<i>Exceeded</i>
6	2	1

State of Oregon - Department of Community Colleges and Workforce Development

Table O - Local Performance (Common Exit)

Program Year 2010 - 2nd Qtr (Year-to-Date)

Local Area Name: 16 - Workforce Investment Council of Clackamas County

07/01/2010 - 12/31/2010		Served	Exited		
Total Participants	Adults	9,909	5,141		
	DW	9,165	4,712		
	Youth (14-21)	299	96		
10/01/2009 - 03/31/2010		N	D	Actual	Negotiated (80%)
Entered Employment Rate	Adults	1,856	3,853	48.2 <i>M</i>	57.0 (45.6)
	DW	1,794	3,717	48.3 <i>M</i>	57.0 (45.6)
	NEG	0	0		
04/01/2009 - 09/30/2009		N	D	Actual	Negotiated (80%)
Employment Retention Rate	Adults	1,749	2,147	81.5 <i>E</i>	80.0 (64.0)
	DW	1,541	1,906	80.8 <i>E</i>	80.0 (64.0)
	NEG	0	0		
04/01/2009 - 09/30/2009		N	D	Actual	Negotiated (80%)
Average Earnings	Adults	27,616,285	1,749	15,789.8 <i>E</i>	12,500.0 (10,000.0)
	DW	24,827,466	1,541	16,111.3 <i>E</i>	12,500.0 (10,000.0)
	NEG	0	0		
10/01/2009 - 03/31/2010		N	D	Actual	Negotiated (80%)
Placement in Employment or Education	Youth (14-21)	36	50	72.0 <i>E</i>	70.0 (56.0)
Attainment of a Degree or Certificate	Youth (14-21)	38	48	79.2 <i>E</i>	69.0 (55.2)
07/01/2010 - 12/31/2010		N	D	Actual	Negotiated (80%)
Literacy and Numeracy Gains	Youth (14-21)	7	24	29.2 <i>M</i>	31.0 (24.8)

<i>Not Met</i>	<i>Met</i>	<i>Exceeded</i>
0	3	6

State of Oregon - Department of Community Colleges and Workforce Development

Table O - Local Performance (Common Exit)

Program Year 2010 - 2nd Qtr (Year-to-Date)

Local Area Name: 24 - The Oregon Consortium/Workforce Alliance

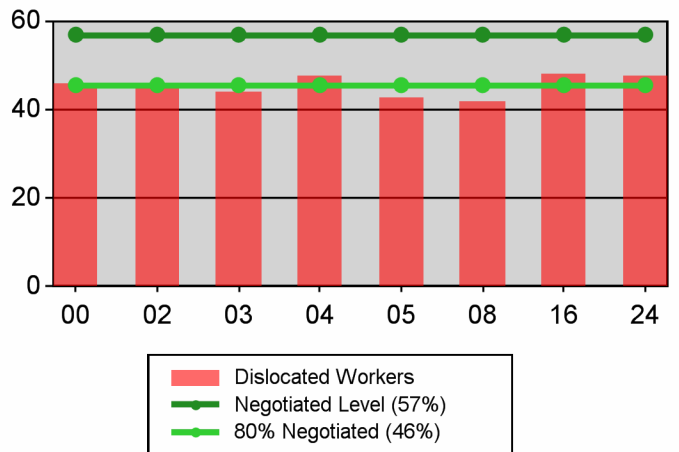
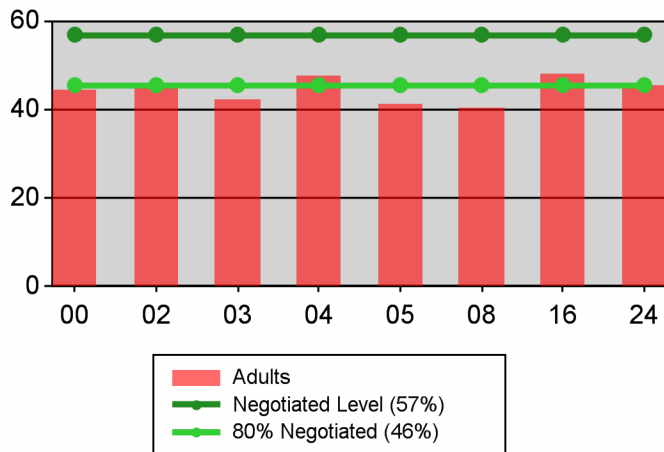
07/01/2010 - 12/31/2010		Served	Exited		
Total Participants	Adults	37,068	24,601		
	DW	32,005	19,931		
	Youth (14-21)	564	289		
10/01/2009 - 03/31/2010		N	D	Actual	Negotiated (80%)
Entered Employment Rate	Adults	8,996	19,779	45.5 <i>N</i>	57.0 (45.6)
	DW	5,826	12,157	47.9 <i>M</i>	57.0 (45.6)
	NEG	175	245	71.4	
04/01/2009 - 09/30/2009		N	D	Actual	Negotiated (80%)
Employment Retention Rate	Adults	7,452	10,233	72.8 <i>M</i>	80.0 (64.0)
	DW	2,449	3,506	69.9 <i>M</i>	80.0 (64.0)
	NEG	139	148	93.9	
04/01/2009 - 09/30/2009		N	D	Actual	Negotiated (80%)
Average Earnings	Adults	77,467,851	7,451	10,397.0 <i>M</i>	12,500.0 (10,000.0)
	DW	25,775,516	2,448	10,529.2 <i>M</i>	12,500.0 (10,000.0)
	NEG	2,249,873	139	16,186.1	
10/01/2009 - 03/31/2010		N	D	Actual	Negotiated (80%)
Placement in Employment or Education	Youth (14-21)	68	121	56.2 <i>M</i>	70.0 (56.0)
Attainment of a Degree or Certificate	Youth (14-21)	67	118	56.8 <i>M</i>	69.0 (55.2)
07/01/2010 - 12/31/2010		N	D	Actual	Negotiated (80%)
Literacy and Numeracy Gains	Youth (14-21)	33	54	61.1 <i>E</i>	31.0 (24.8)

<i>Not Met</i>	<i>Met</i>	<i>Exceeded</i>
1	7	1

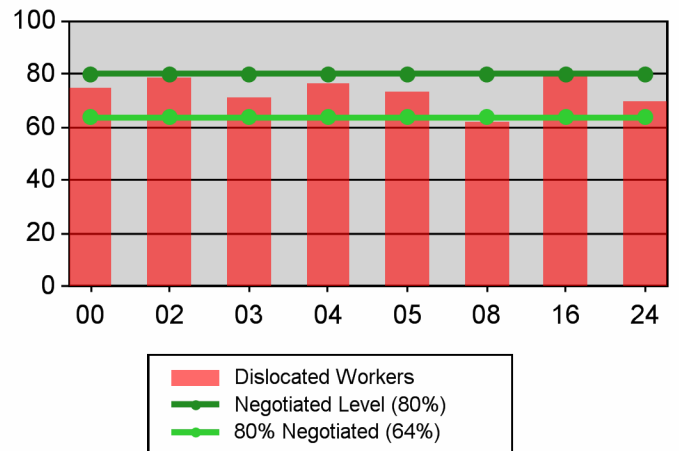
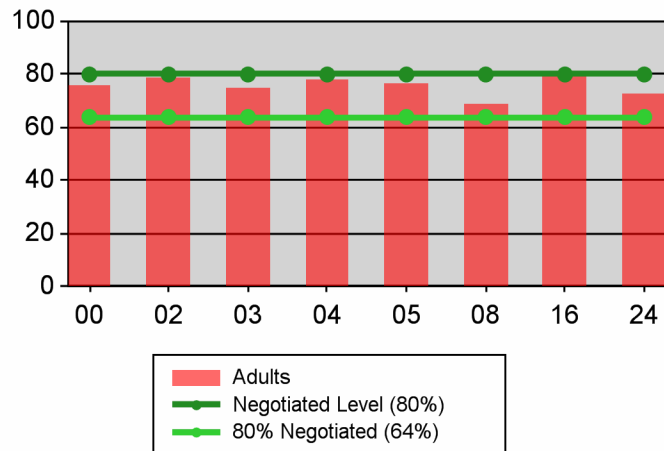
Table O - Local Performance (Common Exit)

Program Year 2010 - 2nd Qtr (Year-to-Date)

Entered Employment Rate



Retention Rate



Average Earnings

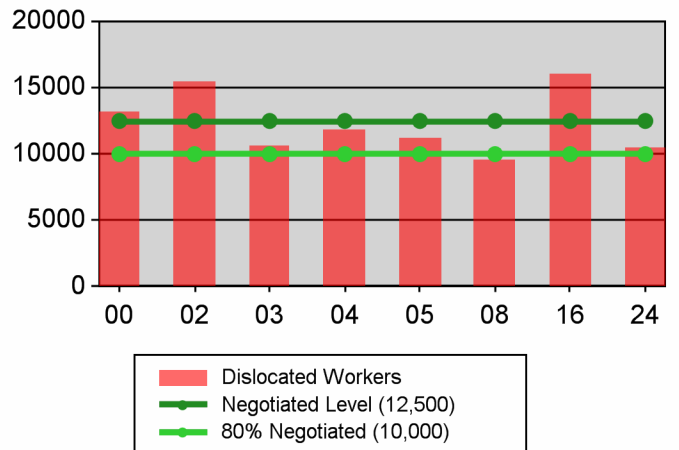
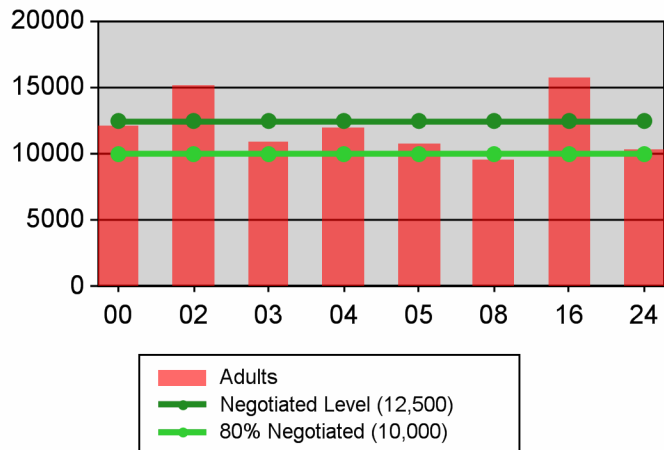
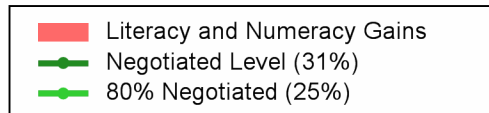
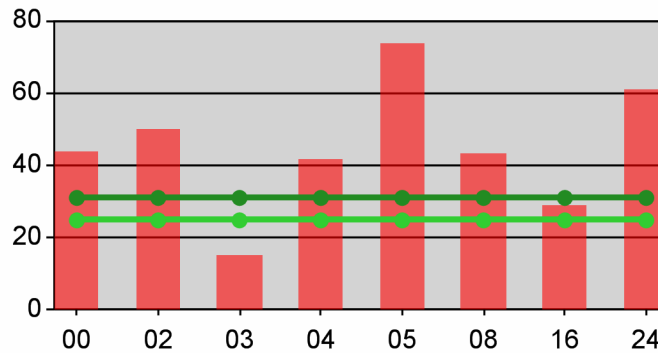
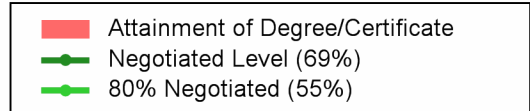
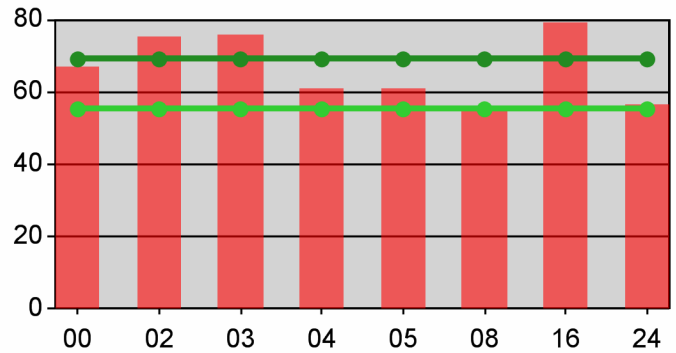
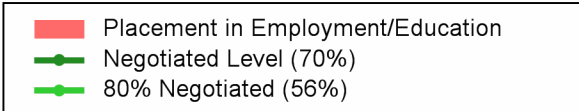
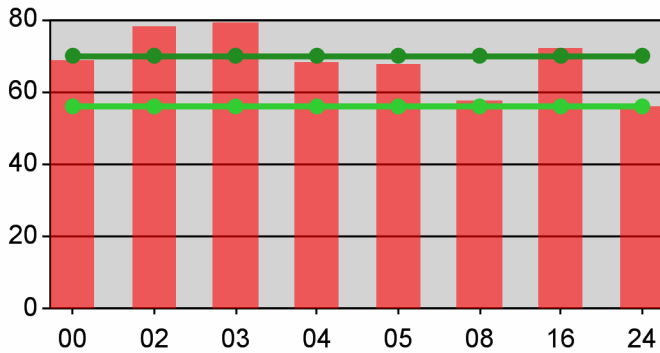


Table O - Local Performance (Common Exit)

Program Year 2010 - 2nd Qtr (Year-to-Date)

Youth



State of Oregon - Department of Community Colleges and Workforce Development

Table O - Local Performance (Common Exit)

Program Year 2010 - 2nd Qtr (Year-to-Date)

Local Area Name: 24 - The Oregon Consortium/Workforce Alliance

07/01/2010 - 12/31/2010		Served	Exited		
Total Participants	Adults	37,068	24,601		
	DW	32,005	19,931		
	Youth (14-21)	564	289		
10/01/2009 - 03/31/2010		N	D	Actual	Negotiated (80%)
Entered Employment Rate	Adults	8,996	19,779	45.5 <i>N</i>	57.0 (45.6)
	DW	5,826	12,157	47.9 <i>M</i>	57.0 (45.6)
	NEG	175	245	71.4	
04/01/2009 - 09/30/2009		N	D	Actual	Negotiated (80%)
Employment Retention Rate	Adults	7,452	10,233	72.8 <i>M</i>	80.0 (64.0)
	DW	2,449	3,506	69.9 <i>M</i>	80.0 (64.0)
	NEG	139	148	93.9	
04/01/2009 - 09/30/2009		N	D	Actual	Negotiated (80%)
Average Earnings	Adults	77,467,851	7,451	10,397.0 <i>M</i>	12,500.0 (10,000.0)
	DW	25,775,516	2,448	10,529.2 <i>M</i>	12,500.0 (10,000.0)
	NEG	2,249,873	139	16,186.1	
10/01/2009 - 03/31/2010		N	D	Actual	Negotiated (80%)
Placement in Employment or Education	Youth (14-21)	68	121	56.2 <i>M</i>	70.0 (56.0)
Attainment of a Degree or Certificate	Youth (14-21)	67	118	56.8 <i>M</i>	69.0 (55.2)
07/01/2010 - 12/31/2010		N	D	Actual	Negotiated (80%)
Literacy and Numeracy Gains	Youth (14-21)	33	54	61.1 <i>E</i>	31.0 (24.8)

<i>Not Met</i>	<i>Met</i>	<i>Exceeded</i>
1	7	1

State of Oregon - Department of Community Colleges and Workforce Development

Table O - Local Performance (Common Exit)

Program Year 2010 - 2nd Qtr (Year-to-Date)

Local Area Name: 240100 - Management Training Corp

07/01/2010 - 12/31/2010		Served	Exited		
Total Participants	Adults	4,655	3,102		
	DW	4,056	2,594		
	Youth (14-21)	51	63		
10/01/2009 - 03/31/2010		N	D	Actual	Negotiated (80%)
Entered Employment Rate	Adults	1,143	2,557	44.7 <i>N</i>	57.0 (45.6)
	DW	744	1,585	46.9 <i>M</i>	57.0 (45.6)
	NEG	36	42	85.7	
04/01/2009 - 09/30/2009		N	D	Actual	Negotiated (80%)
Employment Retention Rate	Adults	719	977	73.6 <i>M</i>	80.0 (64.0)
	DW	329	443	74.3 <i>M</i>	80.0 (64.0)
	NEG	31	33	93.9	
04/01/2009 - 09/30/2009		N	D	Actual	Negotiated (80%)
Average Earnings	Adults	8,384,528	719	11,661.4 <i>M</i>	12,500.0 (10,000.0)
	DW	3,986,482	329	12,117.0 <i>M</i>	12,500.0 (10,000.0)
	NEG	817,957	31	26,385.7	
10/01/2009 - 03/31/2010		N	D	Actual	Negotiated (80%)
Placement in Employment or Education	Youth (14-21)	*	8	12.5 <i>N</i>	70.0 (56.0)
Attainment of a Degree or Certificate	Youth (14-21)	0	*	0.0 <i>N</i>	69.0 (55.2)
07/01/2010 - 12/31/2010		N	D	Actual	Negotiated (80%)
Literacy and Numeracy Gains	Youth (14-21)	*	9	55.6 <i>E</i>	31.0 (24.8)

<i>Not Met</i>	<i>Met</i>	<i>Exceeded</i>
3	5	1

State of Oregon - Department of Community Colleges and Workforce Development

Table O - Local Performance (Common Exit)

Program Year 2010 - 2nd Qtr (Year-to-Date)

Local Area Name: 240600 - Umpqua Training & Employment

07/01/2010 - 12/31/2010		Served	Exited		
Total Participants	Adults	4,075	2,741		
	DW	3,646	2,291		
	Youth (14-21)	113	28		
10/01/2009 - 03/31/2010		N	D	Actual	Negotiated (80%)
Entered Employment Rate	Adults	909	2,236	40.7 <i>N</i>	57.0 (45.6)
	DW	608	1,408	43.2 <i>N</i>	57.0 (45.6)
	NEG	0	*	0.0	
04/01/2009 - 09/30/2009		N	D	Actual	Negotiated (80%)
Employment Retention Rate	Adults	793	1,093	72.6 <i>M</i>	80.0 (64.0)
	DW	320	453	70.6 <i>M</i>	80.0 (64.0)
	NEG	*	*	100.0	
04/01/2009 - 09/30/2009		N	D	Actual	Negotiated (80%)
Average Earnings	Adults	8,439,237	792	10,655.6 <i>M</i>	12,500.0 (10,000.0)
	DW	3,390,780	319	10,629.4 <i>M</i>	12,500.0 (10,000.0)
	NEG	32,436	*	10,812.0	
10/01/2009 - 03/31/2010		N	D	Actual	Negotiated (80%)
Placement in Employment or Education	Youth (14-21)	12	16	75.0 <i>E</i>	70.0 (56.0)
	Attainment of a Degree or Certificate	Youth (14-21)	14	19	73.7 <i>E</i>
07/01/2010 - 12/31/2010		N	D	Actual	Negotiated (80%)
Literacy and Numeracy Gains	Youth (14-21)	17	28	60.7 <i>E</i>	31.0 (24.8)

<i>Not Met</i>	<i>Met</i>	<i>Exceeded</i>
2	4	3

State of Oregon - Department of Community Colleges and Workforce Development

Table O - Local Performance (Common Exit)

Program Year 2010 - 2nd Qtr (Year-to-Date)

Local Area Name: 240700 - South Coast Business Employment Corp.

07/01/2010 - 12/31/2010		Served	Exited		
Total Participants	Adults	4,018	2,718		
	DW	3,433	2,197		
	Youth (14-21)	43	26		
10/01/2009 - 03/31/2010		N	D	Actual	Negotiated (80%)
Entered Employment Rate	Adults	739	1,706	43.3 <i>N</i>	57.0 (45.6)
	DW	426	994	42.9 <i>N</i>	57.0 (45.6)
	NEG	0	0		
04/01/2009 - 09/30/2009		N	D	Actual	Negotiated (80%)
Employment Retention Rate	Adults	680	948	71.7 <i>M</i>	80.0 (64.0)
	DW	194	297	65.3 <i>M</i>	80.0 (64.0)
	NEG	*	*	100.0	
04/01/2009 - 09/30/2009		N	D	Actual	Negotiated (80%)
Average Earnings	Adults	6,442,054	680	9,473.6 <i>N</i>	12,500.0 (10,000.0)
	DW	1,678,518	194	8,652.2 <i>N</i>	12,500.0 (10,000.0)
	NEG	14,558	*	14,558.0	
10/01/2009 - 03/31/2010		N	D	Actual	Negotiated (80%)
Placement in Employment or Education	Youth (14-21)	12	19	63.2 <i>M</i>	70.0 (56.0)
	Attainment of a Degree or Certificate	Youth (14-21)	19	24	79.2 <i>E</i>
07/01/2010 - 12/31/2010		N	D	Actual	Negotiated (80%)
Literacy and Numeracy Gains	Youth (14-21)	*	*	66.7 <i>E</i>	31.0 (24.8)

<i>Not Met</i>	<i>Met</i>	<i>Exceeded</i>
4	3	2

State of Oregon - Department of Community Colleges and Workforce Development

Table O - Local Performance (Common Exit)

Program Year 2010 - 2nd Qtr (Year-to-Date)

Local Area Name: 240900 - Mid-Columbia Council Of Governments

07/01/2010 - 12/31/2010		Served	Exited		
Total Participants	Adults	2,388	1,389		
	DW	2,004	1,037		
	Youth (14-21)	17	22		
10/01/2009 - 03/31/2010		N	D	Actual	Negotiated (80%)
Entered Employment Rate	Adults	400	785	51.0 <i>M</i>	57.0 (45.6)
	DW	237	453	52.3 <i>M</i>	57.0 (45.6)
	NEG	0	0		
04/01/2009 - 09/30/2009		N	D	Actual	Negotiated (80%)
Employment Retention Rate	Adults	418	580	72.1 <i>M</i>	80.0 (64.0)
	DW	143	190	75.3 <i>M</i>	80.0 (64.0)
	NEG	0	0		
04/01/2009 - 09/30/2009		N	D	Actual	Negotiated (80%)
Average Earnings	Adults	4,118,509	418	9,852.9 <i>N</i>	12,500.0 (10,000.0)
	DW	1,538,786	143	10,760.7 <i>M</i>	12,500.0 (10,000.0)
	NEG	0	0		
10/01/2009 - 03/31/2010		N	D	Actual	Negotiated (80%)
Placement in Employment or Education	Youth (14-21)	*	7	57.1 <i>M</i>	70.0 (56.0)
	Attainment of a Degree or Certificate	Youth (14-21)	*	*	60.0 <i>M</i>
07/01/2010 - 12/31/2010		N	D	Actual	Negotiated (80%)
Literacy and Numeracy Gains	Youth (14-21)	0	*	0.0 <i>N</i>	31.0 (24.8)

<i>Not Met</i>	<i>Met</i>	<i>Exceeded</i>
2	7	0

State of Oregon - Department of Community Colleges and Workforce Development

Table O - Local Performance (Common Exit)

Program Year 2010 - 2nd Qtr (Year-to-Date)

Local Area Name: 241000 - Central Oregon Intergovernment Council

07/01/2010 - 12/31/2010		Served	Exited		
Total Participants	Adults	10,303	6,213		
	DW	9,224	5,296		
	Youth (14-21)	102	57		
10/01/2009 - 03/31/2010		N	D	Actual	Negotiated (80%)
Entered Employment Rate	Adults	2,510	5,703	44.0 <i>N</i>	57.0 (45.6)
	DW	1,637	3,470	47.2 <i>M</i>	57.0 (45.6)
	NEG	24	55	43.6	
04/01/2009 - 09/30/2009		N	D	Actual	Negotiated (80%)
Employment Retention Rate	Adults	1,752	2,413	72.6 <i>M</i>	80.0 (64.0)
	DW	650	927	70.1 <i>M</i>	80.0 (64.0)
	NEG	29	31	93.5	
04/01/2009 - 09/30/2009		N	D	Actual	Negotiated (80%)
Average Earnings	Adults	19,579,140	1,752	11,175.3 <i>M</i>	12,500.0 (10,000.0)
	DW	7,070,743	650	10,878.1 <i>M</i>	12,500.0 (10,000.0)
	NEG	327,219	29	11,283.4	
10/01/2009 - 03/31/2010		N	D	Actual	Negotiated (80%)
Placement in Employment or Education	Youth (14-21)	15	27	55.6 <i>N</i>	70.0 (56.0)
	Attainment of a Degree or Certificate	Youth (14-21)	12	26	46.2 <i>N</i>
07/01/2010 - 12/31/2010		N	D	Actual	Negotiated (80%)
Literacy and Numeracy Gains	Youth (14-21)	*	6	83.3 <i>E</i>	31.0 (24.8)

<i>Not Met</i>	<i>Met</i>	<i>Exceeded</i>
3	5	1

State of Oregon - Department of Community Colleges and Workforce Development

Table O - Local Performance (Common Exit)

Program Year 2010 - 2nd Qtr (Year-to-Date)

Local Area Name: 241100 - Central OR Intergovt Council - Klamath & Lake

07/01/2010 - 12/31/2010		Served	Exited		
Total Participants	Adults	3,127	2,196		
	DW	2,708	1,804		
	Youth (14-21)	95	28		
10/01/2009 - 03/31/2010		N	D	Actual	Negotiated (80%)
Entered Employment Rate	Adults	736	1,723	42.7 N	57.0 (45.6)
	DW	489	1,085	45.1 N	57.0 (45.6)
	NEG	0	0		
04/01/2009 - 09/30/2009		N	D	Actual	Negotiated (80%)
Employment Retention Rate	Adults	513	755	67.9 M	80.0 (64.0)
	DW	141	203	69.5 M	80.0 (64.0)
	NEG	0	0		
04/01/2009 - 09/30/2009		N	D	Actual	Negotiated (80%)
Average Earnings	Adults	4,812,433	513	9,381.0 N	12,500.0 (10,000.0)
	DW	1,223,231	141	8,675.4 N	12,500.0 (10,000.0)
	NEG	0	0		
10/01/2009 - 03/31/2010		N	D	Actual	Negotiated (80%)
Placement in Employment or Education	Youth (14-21)	7	12	58.3 M	70.0 (56.0)
Attainment of a Degree or Certificate	Youth (14-21)	*	14	28.6 N	69.0 (55.2)
07/01/2010 - 12/31/2010		N	D	Actual	Negotiated (80%)
Literacy and Numeracy Gains	Youth (14-21)	*	*	75.0 E	31.0 (24.8)

Not Met	Met	Exceeded
5	3	1

State of Oregon - Department of Community Colleges and Workforce Development

Table O - Local Performance (Common Exit)

Program Year 2010 - 2nd Qtr (Year-to-Date)

Local Area Name: 241200 - Community Action Programs of East Central Oregon

07/01/2010 - 12/31/2010		Served	Exited		
Total Participants	Adults	3,528	2,817		
	DW	2,827	2,063		
	Youth (14-21)	87	35		
10/01/2009 - 03/31/2010		N	D	Actual	Negotiated (80%)
Entered Employment Rate	Adults	1,235	2,332	53.0 <i>M</i>	57.0 (45.6)
	DW	776	1,395	55.6 <i>M</i>	57.0 (45.6)
	NEG	14	18	77.8	
04/01/2009 - 09/30/2009		N	D	Actual	Negotiated (80%)
Employment Retention Rate	Adults	1,232	1,670	73.8 <i>M</i>	80.0 (64.0)
	DW	282	417	67.6 <i>M</i>	80.0 (64.0)
	NEG	16	17	94.1	
04/01/2009 - 09/30/2009		N	D	Actual	Negotiated (80%)
Average Earnings	Adults	13,156,426	1,232	10,678.9 <i>M</i>	12,500.0 (10,000.0)
	DW	2,878,856	282	10,208.7 <i>M</i>	12,500.0 (10,000.0)
	NEG	189,907	16	11,869.2	
10/01/2009 - 03/31/2010		N	D	Actual	Negotiated (80%)
Placement in Employment or Education	Youth (14-21)	*	10	40.0 <i>N</i>	70.0 (56.0)
Attainment of a Degree or Certificate	Youth (14-21)	6	10	60.0 <i>M</i>	69.0 (55.2)
07/01/2010 - 12/31/2010		N	D	Actual	Negotiated (80%)
Literacy and Numeracy Gains	Youth (14-21)	0	*	0.0 <i>N</i>	31.0 (24.8)

<i>Not Met</i>	<i>Met</i>	<i>Exceeded</i>
2	7	0

State of Oregon - Department of Community Colleges and Workforce Development

Table O - Local Performance (Common Exit)

Program Year 2010 - 2nd Qtr (Year-to-Date)

Local Area Name: 241300 - Training & Employment Consortium - R13

07/01/2010 - 12/31/2010		Served	Exited		
Total Participants	Adults	2,589	1,728		
	DW	2,136	1,345		
	Youth (14-21)	32	11		
10/01/2009 - 03/31/2010		N	D	Actual	Negotiated (80%)
Entered Employment Rate	Adults	685	1,326	51.7 <i>M</i>	57.0 (45.6)
	DW	497	892	55.7 <i>M</i>	57.0 (45.6)
	NEG	101	126	80.2	
04/01/2009 - 09/30/2009		N	D	Actual	Negotiated (80%)
Employment Retention Rate	Adults	704	914	77.0 <i>M</i>	80.0 (64.0)
	DW	213	288	74.0 <i>M</i>	80.0 (64.0)
	NEG	59	63	93.7	
04/01/2009 - 09/30/2009		N	D	Actual	Negotiated (80%)
Average Earnings	Adults	6,597,059	704	9,370.8 <i>N</i>	12,500.0 (10,000.0)
	DW	2,317,173	213	10,878.7 <i>M</i>	12,500.0 (10,000.0)
	NEG	867,796	59	14,708.4	
10/01/2009 - 03/31/2010		N	D	Actual	Negotiated (80%)
Placement in Employment or Education	Youth (14-21)	7	9	77.8 <i>E</i>	70.0 (56.0)
	Attainment of a Degree or Certificate	Youth (14-21)	*	7	57.1 <i>M</i>
07/01/2010 - 12/31/2010		N	D	Actual	Negotiated (80%)
Literacy and Numeracy Gains	Youth (14-21)	0	0		31.0 (24.8)

<i>Not Met</i>	<i>Met</i>	<i>Exceeded</i>
1	6	1

State of Oregon - Department of Community Colleges and Workforce Development

Table O - Local Performance (Common Exit)

Program Year 2010 - 2nd Qtr (Year-to-Date)

Local Area Name: 241400 - Training & Employment Consortium - R14

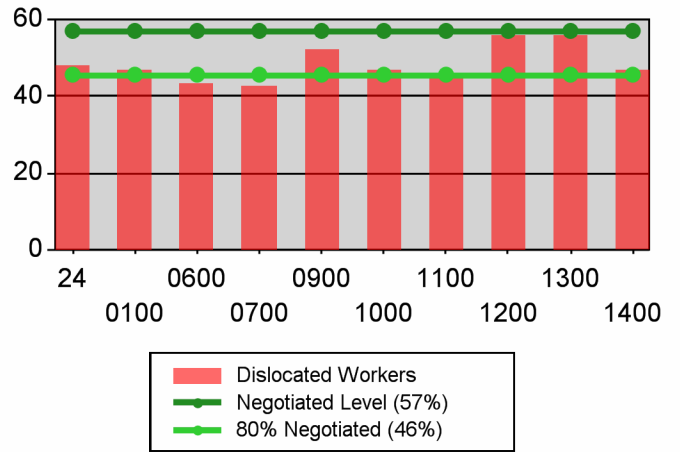
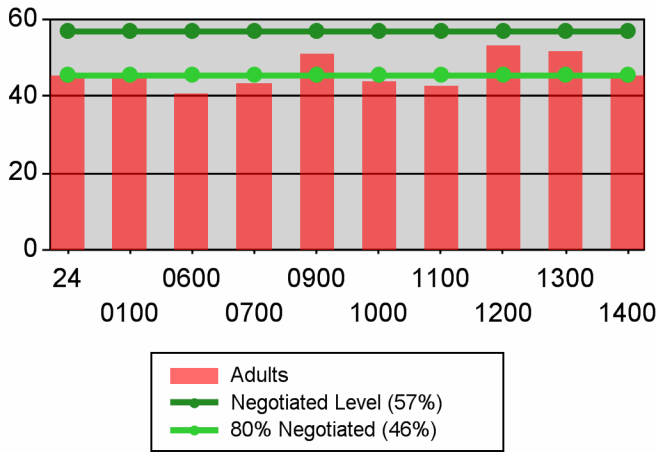
07/01/2010 - 12/31/2010		Served	Exited		
Total Participants	Adults	2,385	1,697		
	DW	1,971	1,304		
	Youth (14-21)	24	19		
10/01/2009 - 03/31/2010		N	D	Actual	Negotiated (80%)
Entered Employment Rate	Adults	639	1,411	45.3 <i>N</i>	57.0 (45.6)
	DW	412	875	47.1 <i>M</i>	57.0 (45.6)
	NEG	0	*	0.0	
04/01/2009 - 09/30/2009		N	D	Actual	Negotiated (80%)
Employment Retention Rate	Adults	641	883	72.6 <i>M</i>	80.0 (64.0)
	DW	177	288	61.5 <i>N</i>	80.0 (64.0)
	NEG	0	0		
04/01/2009 - 09/30/2009		N	D	Actual	Negotiated (80%)
Average Earnings	Adults	5,938,465	641	9,264.4 <i>N</i>	12,500.0 (10,000.0)
	DW	1,690,946	177	9,553.4 <i>N</i>	12,500.0 (10,000.0)
	NEG	0	0		
10/01/2009 - 03/31/2010		N	D	Actual	Negotiated (80%)
Placement in Employment or Education	Youth (14-21)	6	13	46.2 <i>N</i>	70.0 (56.0)
Attainment of a Degree or Certificate	Youth (14-21)	*	10	50.0 <i>N</i>	69.0 (55.2)
07/01/2010 - 12/31/2010		N	D	Actual	Negotiated (80%)
Literacy and Numeracy Gains	Youth (14-21)	*	*	100.0 <i>E</i>	31.0 (24.8)

<i>Not Met</i>	<i>Met</i>	<i>Exceeded</i>
6	2	1

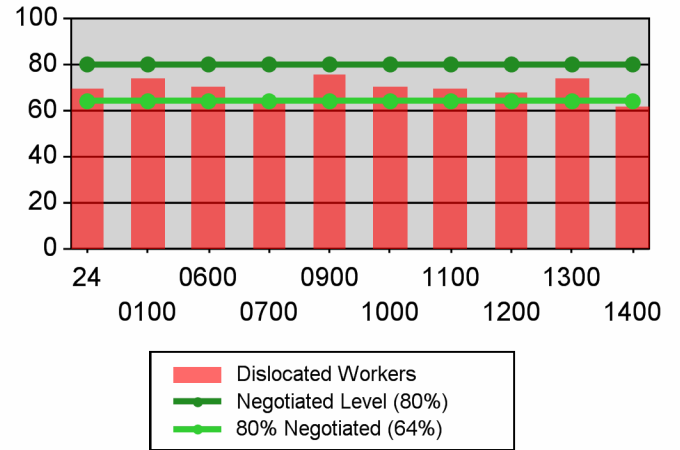
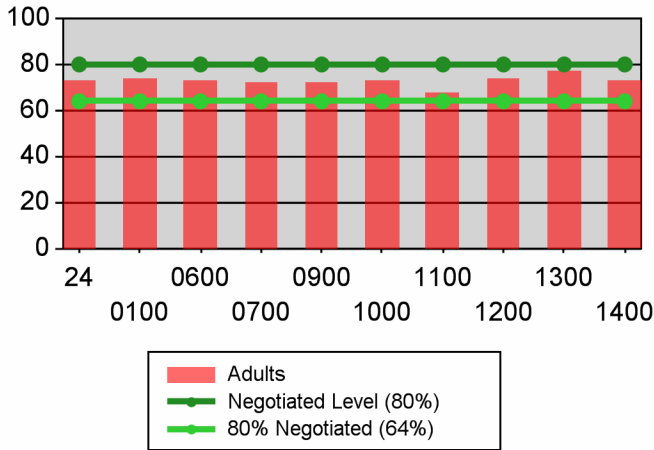
Table O - Local Performance (Common Exit)

Program Year 2010 - 2nd Qtr (Year-to-Date)

Entered Employment Rate



Retention Rate



Average Earnings

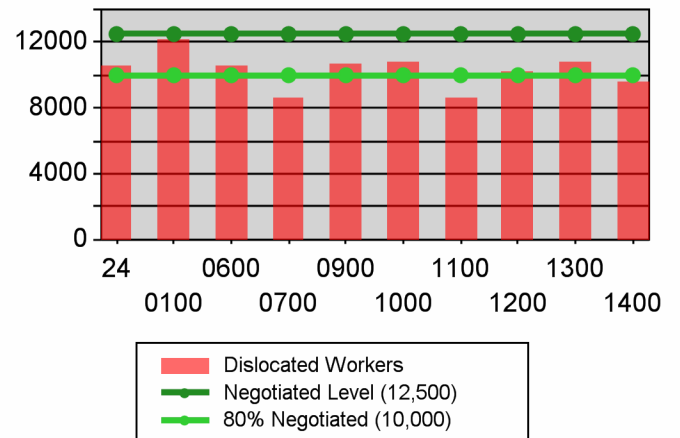
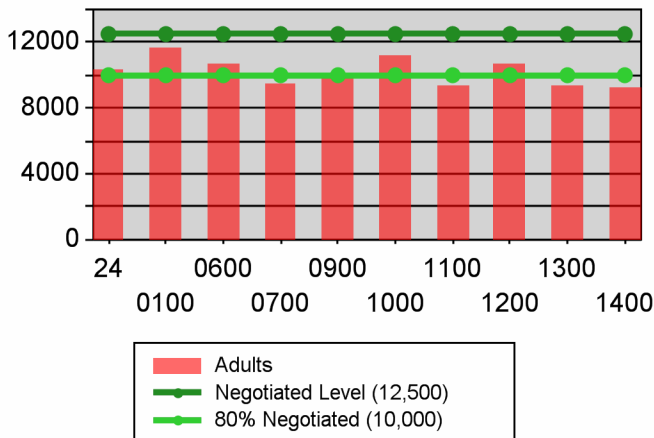


Table O - Local Performance (Common Exit)

Program Year 2010 - 2nd Qtr (Year-to-Date)

Youth

