

# WIA Annual Report (ETA Form 9091)

Statewide PY-2015 Qtr-4 (Year-to-Date)

**Table M - Participation Levels**

Reported Information	Total Participants Served	Total Exitters
Total Adult Customers	194,049	182,089
Total Adults (self-service only)	67,649	68,495
WIA Adult	194,037	182,070
WIA Dislocated Worker	94,103	85,827
Total Youth (14-21)	2,375	1,221
Younger Youth (14-18)	1,626	907
Older Youth (19-21)	749	314
Out-of-School Youth	1,566	557
In-School Youth	809	664

**Table B - Adult Program Results**

Reported Information	Negotiated Performance Level (80%)	Actual Performance	
Entered Employment Rate	59.0% (47.2%)	64.2%	63,421 98,778
Employment Retention Rate	85.0% (68.0%)	85.4%	70,214 82,186
Six-Month Average Earnings	\$14,200.0 (\$11,360.0)	\$15,353.9	1,077,749,897 70,194
Employment and Credential Rate		18.3%	384 2,104
Credential Attainment Rate		22.1%	480 2,168

**Table C - Outcomes for Adult Special Populations**

Reported Information	Public Assistance Recipients Receiving Intensive or Training Services		Veterans		Individuals with Disabilities		Older Individuals	
Entered Employment Rate	68.2%	597 875	60.3%	5,043 8,360	47.5%	1,757 3,696	58.6%	11,144 19,032
Employment Retention Rate	83.6%	688 823	83.3%	5,359 6,437	76.9%	1,470 1,911	83.8%	12,172 14,521
Six-Month Average Earnings	\$11,621.3	7,937,315 683	\$17,555.8	94,046,392 5,357	\$12,222.0	17,966,387 1,470	\$15,751.0	191,705,599 12,171
Employment and Credential Rate	21.5%	62 289	10.6%	19 180	26.8%	15 56	12.9%	30 232

**Table D - Other Outcome Information by Service Level for the Adult Program**

Reported Information	Individuals Who Only Received Core Services		Individuals who Only Received Core and Intensive Services		Individuals who Received Training Services	
Entered Employment Rate	63.6%	59,565 93,592	70.3%	2,516 3,579	83.4%	1,340 1,607
Employment Retention Rate	85.4%	65,737 77,009	85.1%	2,951 3,466	89.2%	1,526 1,711
Six-Month Average Earnings	\$15,358.9	1,009,615,066 65,735	\$14,791.0	43,530,022 2,943	\$16,230.1	24,604,808 1,516

\* Data suppressed for confidentiality purposes

# WIA Annual Report (ETA Form 9091)

Statewide PY-2015 Qtr-4 (Year-to-Date)

### Table E - Dislocated Worker Program Results

Reported Information	Negotiated Performance Level (80%)	Actual Performance	
Entered Employment Rate	59.0% (47.2%)	64.9%	50,563 77,854
Employment Retention Rate	85.0% (68.0%)	85.8%	55,481 64,637
Six-Month Average Earnings	\$14,200.0 (\$11,360.0)	\$15,908.0	882,351,567 55,466
Employment and Credential Rate		19.3%	270 1,402
Credential Attainment Rate		23.6%	336 1,422

### Table F - Outcomes for Dislocated Worker Special Populations

Reported Information	Veterans		Individuals with Disabilities		Older Individuals		Displaced Homemakers	
Entered Employment Rate	60.5%	4,188 6,926	48.9%	1,323 2,707	60.1%	9,581 15,946	59.6%	3,944 6,615
Employment Retention Rate	83.5%	4,411 5,281	77.5%	1,149 1,483	84.0%	10,391 12,363	81.2%	4,116 5,066
Six-Month Average Earnings	\$17,821.0	78,572,685 4,409	\$12,495.2	14,357,020 1,149	\$16,076.9	167,039,225 10,390	\$11,892.2	48,888,943 4,111
Employment and Credential Rate	11.3%	17 151	26.7%	12 45	11.1%	22 199	13.0%	27 207

### Table G - Other Outcome Information by Service Level for the Dislocated Worker Program

Reported Information	Individuals Who Only Received Core Services		Individuals who Only Received Core and Intensive Services		Individuals who Received Training Services	
Entered Employment Rate	64.4%	47,938 74,398	71.9%	1,637 2,278	83.9%	988 1,178
Employment Retention Rate	85.8%	52,619 61,317	85.1%	1,866 2,192	88.3%	996 1,128
Six-Month Average Earnings	\$15,926.0	837,994,607 52,618	\$15,164.7	28,221,417 1,861	\$16,348.1	16,135,544 987

### Table L - Other Reported Information

Reported Information	Adults		Dislocated Workers		Older Youth	
12-Month Employment Retention	85.8%	73,066 85,174	85.9%	58,003 67,525	79.1%	200 253
12-Month Earnings Increase/Replacement	(\$333.1)	-28,358,034 85,144	\$95.6	898,990,892 940,748,518	\$5,028.4	1,176,640 234
Entered Non-Traditional Employment	0.1%	92 63,421	0.2%	76 50,563	4.1%	8 193
Wages At Entered Employment	\$6,260.6	396,862,584 63,391	\$6,522.6	329,651,575 50,540	\$3,303.5	601,245 182
Employment Related Training	38.5%	516 1,340	39.0%	385 988		

\* Data suppressed for confidentiality purposes

# WIA Annual Report (ETA Form 9091)

Statewide PY-2015 Qtr-4 (Year-to-Date)

**Table H1 - Youth (14-21) Program Results**

Reported Information	Negotiated Performance Level (80%)	Actual Performance	
Placement in Employment or Education	72.0% (57.6%)	76.4%	844 1,104
Attainment of a Degree or Certificate	73.0% (58.4%)	66.7%	743 1,114
Literacy and Numeracy Gains	53.0% (42.4%)	48.7%	238 489
Credential Attainment Rate		66.6%	743 1,115

**Table H1.A - Outcomes for Youth Special Populations**

Reported Information	Public Assistance Recipients		Veterans		Individuals with Disabilities		Out-of-School Youth	
Placement in Employment or Education	73.1%	438 599		0 0	66.7%	46 69	70.2%	327 466
Attainment of a Degree or Certificate	63.5%	369 581		0 0	74.6%	50 67	50.0%	200 400
Literacy and Numeracy Gains	46.5%	147 316		0 0	48.7%	19 39	48.7%	238 489

**Table H2 - Older Youth (19-21) Results**

Reported Information	Negotiated Performance Level (80%)	Actual Performance	
Entered Employment Rate		71.5%	193 270
Employment Retention Rate		78.1%	200 256
Six Months Earnings Increase		\$4,589.1	1,119,740 244
Credential Rate		39.0%	122 313

**Table I - Outcomes for Older Youth Special Populations**

Reported Information	Public Assistance Recipients		Veterans		Individuals with Disabilities		Out-of-School Youth	
Entered Employment Rate	65.7%	111 169		0 0	36.4%	*	69.0%	138 200
Employment Retention Rate	79.7%	110 138	100.0%	*	60.0%	*	78.2%	151 193
Six Months Earnings Increase	\$5,288.4	698,069 132	\$5,144.0	*	\$1,116.2	*	\$4,956.9	912,061 184
Credential Rate	35.2%	69 196		0 0	25.0%	*	29.3%	68 232

**Table P - Veteran Priority of Service**

Reported Information	Total Participants Served	Total Exiters
Received a Service During the Entry Period	13,845	13,845
Received a Staff Assisted Service During the Entry Period	13,845	8,450

\* Data suppressed for confidentiality purposes

# WIA Annual Report (ETA Form 9091)

Statewide PY-2015 Qtr-4 (Year-to-Date)

**Table Q - Veterans' Outcomes by Special Populations**

Reported Information	Adults		Dislocated Workers		Older Youth	
Entered Employment Rate	57.3%	1,575 2,750	84.6%	99 117	40.4%	129 319
Employment Retention Rate	81.6%	1,539 1,885	87.2%	116 133		0 0
Six-Month Average Earnings	\$17,124.4	26,337,344 1,538	\$17,950.3	2,064,280 115		0 0

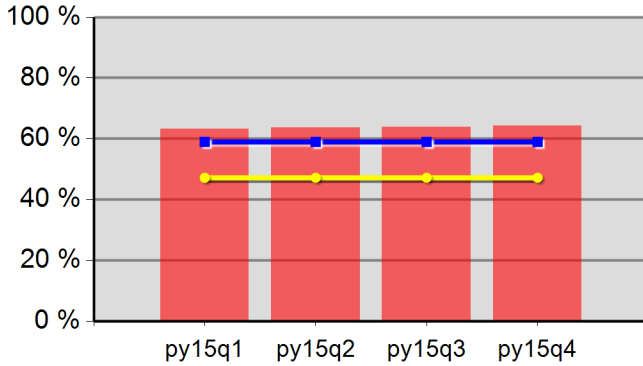
Performance was Calculated: 8/12/2016 1:31:49 PM

\* Data suppressed for confidentiality purposes

Office of Community Colleges and Workforce Development

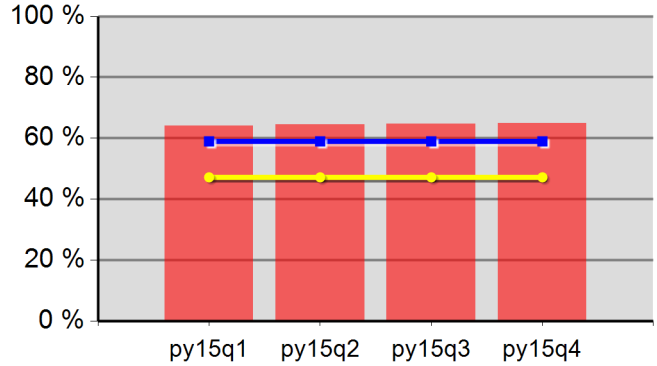
Statewide  
Program Year 2015 Rolling 4 Quarters

**Adult Entered Employment**



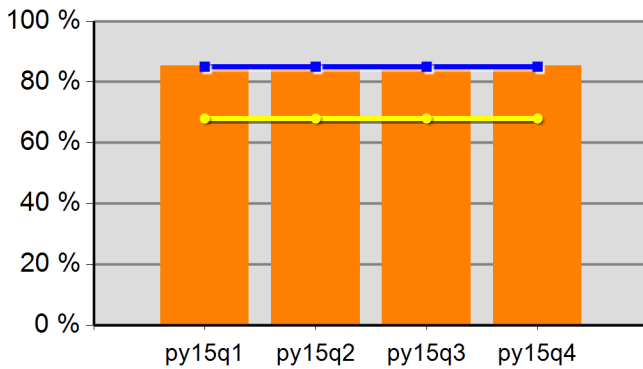
63.3%	63.6%	63.9%	64.2%
Neg Level	59.0%	80% Neg	47.2%

**DW Entered Employment**



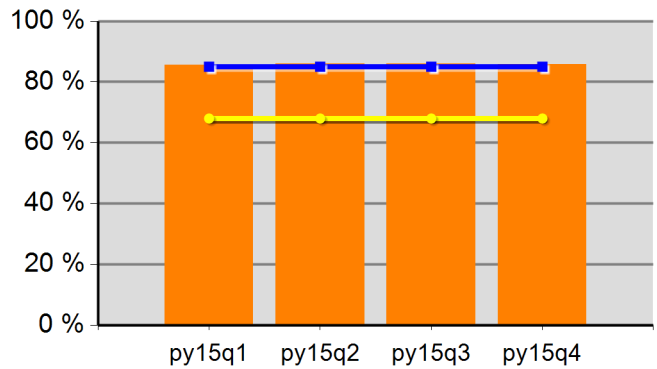
64.0%	64.4%	64.6%	64.9%
Neg Level	59.0%	80% Neg	47.2%

**Adult Retention**



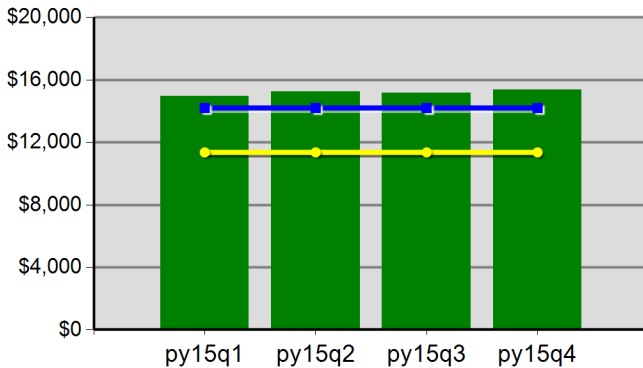
85.3%	85.5%	85.6%	85.4%
Neg Level	85.0%	80% Neg	68.0%

**DW Retention**



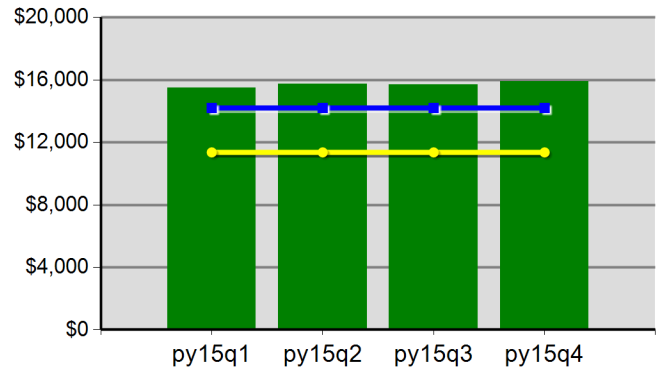
85.5%	85.9%	86.0%	85.8%
Neg Level	85.0%	80% Neg	68.0%

**Adult Average Earnings**



\$149.8	\$152.3	\$151.7	\$153.5
Neg Level	\$14,200.0	80% Neg	\$11,360.0

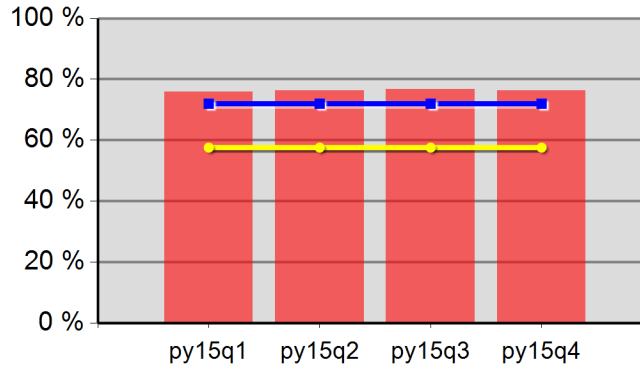
**DW Average Earnings**



\$154.7	\$157.5	\$157.0	\$159.1
Neg Level	\$14,200.0	80% Neg	\$11,360.0

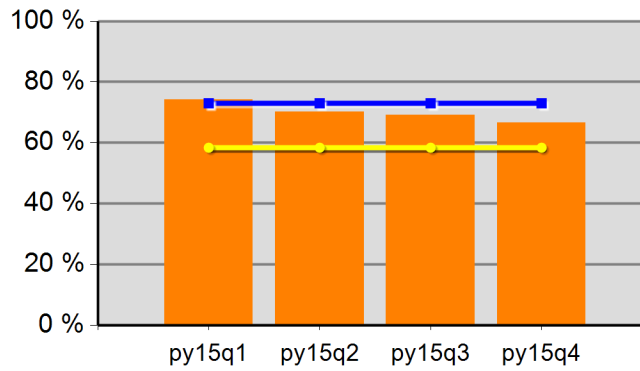
Statewide  
Program Year 2015 Rolling 4 Quarters

**Youth Employment or Education**



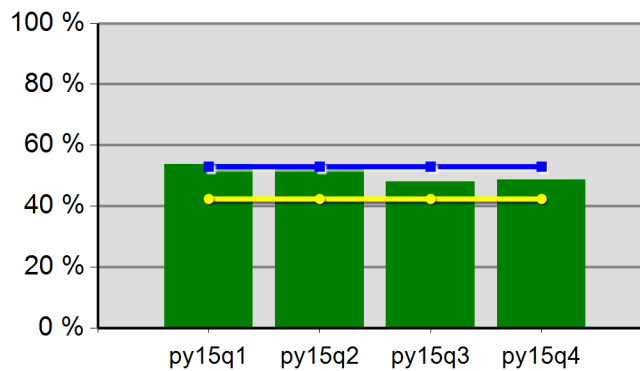
75.8%	76.4%	76.8%	76.4%
Neg Level	72.0%	80% Neg	57.6%

**Youth Degree or Certificate**



74.1%	70.2%	69.1%	66.7%
Neg Level	73.0%	80% Neg	58.4%

**Youth Literacy and Numeracy Gains**



53.7%	52.3%	48.0%	48.7%
Neg Level	53.0%	80% Neg	42.4%

# WIA Annual Report (ETA Form 9091)

Oregon Northwest WIB PY-2015 Qtr-4 (Year-to-Date)

**Table M - Participation Levels**

Reported Information	Total Participants Served	Total Exitters
Total Adult Customers	6,951	5,090
Total Adults (self-service only)	2,398	1,217
WIA Adult	6,950	5,088
WIA Dislocated Worker	3,310	2,849
Total Youth (14-21)	98	64
Younger Youth (14-18)	71	45
Older Youth (19-21)	27	19
Out-of-School Youth	67	34
In-School Youth	31	30

**Table B - Adult Program Results**

Reported Information	Negotiated Performance Level (80%)	Actual Performance	
Entered Employment Rate	60.0% (48.0%)	62.1%	1,997 3,216
Employment Retention Rate	84.0% (67.2%)	84.5%	2,733 3,234
Six-Month Average Earnings	\$13,500.0 (\$10,800.0)	\$14,438.8	39,446,937 2,732
Employment and Credential Rate		31.5%	17 54
Credential Attainment Rate		32.2%	19 59

**Table C - Outcomes for Adult Special Populations**

Reported Information	Public Assistance Recipients Receiving Intensive or Training Services		Veterans		Individuals with Disabilities		Older Individuals	
Entered Employment Rate	63.0%	17 27	57.4%	198 345	42.5%	79 186	57.6%	435 755
Employment Retention Rate	86.8%	33 38	84.0%	263 313	74.1%	86 116	83.7%	577 689
Six-Month Average Earnings	\$11,857.2	391,288 33	\$17,090.7	4,477,771 262	\$12,193.2	1,048,618 86	\$14,200.0	8,193,404 577
Employment and Credential Rate	33.3%	* *	30.0%	* *	25.0%	* *		* *

**Table D - Other Outcome Information by Service Level for the Adult Program**

Reported Information	Individuals Who Only Received Core Services		Individuals who Only Received Core and Intensive Services		Individuals who Received Training Services	
Entered Employment Rate	61.7%	1,926 3,120	60.0%	30 50	89.1%	41 46
Employment Retention Rate	84.4%	2,619 3,102	85.2%	75 88	88.6%	39 44
Six-Month Average Earnings	\$14,404.4	37,725,004 2,619	\$14,515.0	1,088,624 75	\$16,666.0	633,309 38

\* Data suppressed for confidentiality purposes

WIA Annual Report (ETA Form 9091)

Oregon Northwest WIB PY-2015 Qtr-4 (Year-to-Date)

**Table E - Dislocated Worker Program Results**

Reported Information	Negotiated Performance Level (80%)	Actual Performance	
Entered Employment Rate	60.0% (48.0%)	62.4%	1,550 2,482
Employment Retention Rate	84.0% (67.2%)	84.1%	2,144 2,548
Six-Month Average Earnings	\$13,500.0 (\$10,800.0)	\$14,811.2	31,740,315 2,143
Employment and Credential Rate		32.6%	14 43
Credential Attainment Rate		37.2%	16 43

**Table F - Outcomes for Dislocated Worker Special Populations**

Reported Information	Veterans		Individuals with Disabilities		Older Individuals		Displaced Homemakers	
Entered Employment Rate	57.2%	159 278	41.5%	61 147	58.8%	357 607	62.2%	155 249
Employment Retention Rate	82.7%	215 260	73.5%	75 102	83.7%	481 575	81.9%	176 215
Six-Month Average Earnings	\$17,276.8	3,697,243 214	\$12,048.0	903,597 75	\$14,561.4	7,004,041 481	\$12,563.4	2,211,165 176
Employment and Credential Rate	22.2%	* *	33.3%	* *		* *	75.0%	* *

**Table G - Other Outcome Information by Service Level for the Dislocated Worker Program**

Reported Information	Individuals Who Only Received Core Services		Individuals who Only Received Core and Intensive Services		Individuals who Received Training Services	
Entered Employment Rate	62.0%	1,500 2,420	69.2%	18 26	88.9%	32 36
Employment Retention Rate	84.2%	2,063 2,450	79.4%	50 63	88.6%	31 35
Six-Month Average Earnings	\$14,779.6	30,490,236 2,063	\$13,790.3	689,513 50	\$18,685.5	560,566 30

**Table L - Other Reported Information**

Reported Information	Adults		Dislocated Workers		Older Youth	
12-Month Employment Retention	85.1%	2,926 3,439	84.4%	2,308 2,735	87.5%	21 24
12-Month Earnings Increase/Replacement	(\$941.8)	-3,239,010 3,439	\$90.3	33,181,131 36,756,790	\$4,319.0	95,019 22
Entered Non-Traditional Employment	0.1%	* *	0.1%	* *	7.7%	* *
Wages At Entered Employment	\$5,642.3	11,256,404 1,995	\$5,853.4	9,061,113 1,548	\$2,678.2	32,138 12
Employment Related Training	51.2%	21 41	53.1%	17 32		

\* Data suppressed for confidentiality purposes



# WIA Annual Report (ETA Form 9091)

Oregon Northwest WIB PY-2015 Qtr-4 (Year-to-Date)

### Table H1 - Youth (14-21) Program Results

Reported Information	Negotiated Performance Level (80%)	Actual Performance	
Placement in Employment or Education	72.0% (57.6%)	69.2%	36 52
Attainment of a Degree or Certificate	72.0% (57.6%)	63.3%	31 49
Literacy and Numeracy Gains	60.0% (48.0%)	23.1%	* *
Credential Attainment Rate		63.3%	31 49

### Table H1.A - Outcomes for Youth Special Populations

Reported Information	Public Assistance Recipients		Veterans		Individuals with Disabilities		Out-of-School Youth	
Placement in Employment or Education	72.2%	26 36		0 0	66.7%	* *	65.4%	17 26
Attainment of a Degree or Certificate	64.9%	24 37		0 0	100.0%	* *	70.6%	12 17
Literacy and Numeracy Gains	25.0%	* *		0 0		* *	23.1%	* *

### Table H2 - Older Youth (19-21) Results

Reported Information	Negotiated Performance Level (80%)	Actual Performance	
Entered Employment Rate		81.3%	13 16
Employment Retention Rate		60.9%	14 23
Six Months Earnings Increase		\$2,915.6	61,228 21
Credential Rate		35.3%	6 17

### Table I - Outcomes for Older Youth Special Populations

Reported Information	Public Assistance Recipients		Veterans		Individuals with Disabilities		Out-of-School Youth	
Entered Employment Rate	70.0%	7 10		0 0	100.0%	* *	83.3%	10 12
Employment Retention Rate	56.3%	9 16		0 0		0 0	55.6%	10 18
Six Months Earnings Increase	\$3,639.1	50,947 14		0 0		0 0	\$3,599.8	57,597 16
Credential Rate	54.5%	6 11		0 0	100.0%	* *	33.3%	* *

### Table P - Veteran Priority of Service

Reported Information	Total Participants Served	Total Exitters
Received a Service During the Entry Period	512	512
Received a Staff Assisted Service During the Entry Period	512	354

\* Data suppressed for confidentiality purposes

WIA Annual Report (ETA Form 9091)

Oregon Northwest WIB PY-2015 Qtr-4 (Year-to-Date)

**Table Q - Veterans' Outcomes by Special Populations**

Reported Information	Adults		Dislocated Workers		Older Youth	
Entered Employment Rate	56.1%	60 107	66.7%	*	22.2%	*
Employment Retention Rate	84.8%	67 79	100.0%	*		0 0
Six-Month Average Earnings	\$15,226.4	1,020,170 67	\$16,960.3	*		0 0

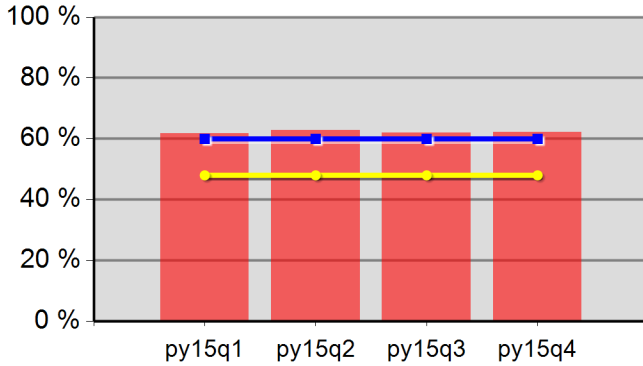
Performance was Calculated: 8/12/2016 1:33:40 PM

\* Data suppressed for confidentiality purposes

Office of Community Colleges and Workforce Development

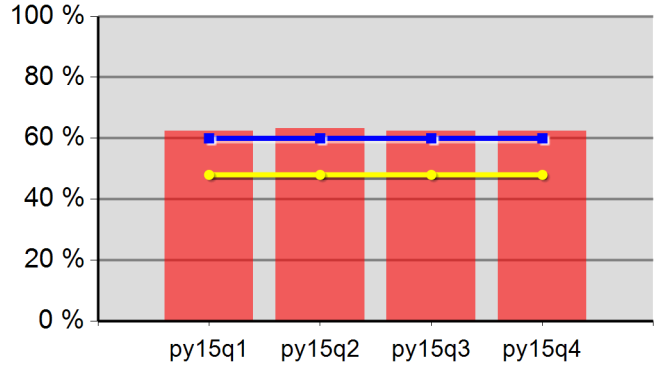
Oregon Northwest WIB  
Program Year 2015 Rolling 4 Quarters

**Adult Entered Employment**



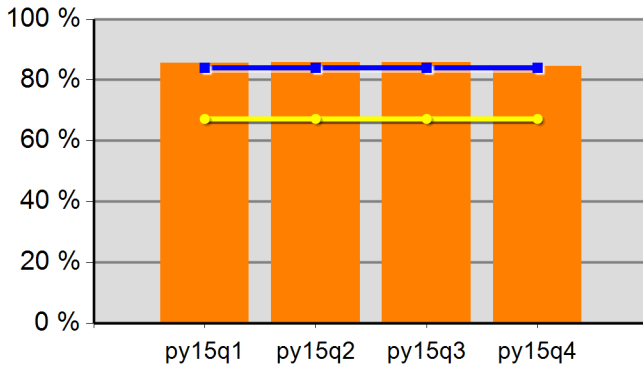
61.8%	62.8%	61.9%	62.1%
Neg Level	60.0%	80% Neg	48.0%

**DW Entered Employment**



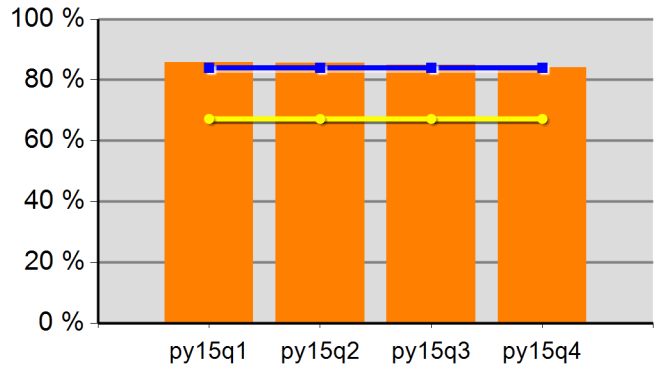
62.3%	63.2%	62.4%	62.4%
Neg Level	60.0%	80% Neg	48.0%

**Adult Retention**



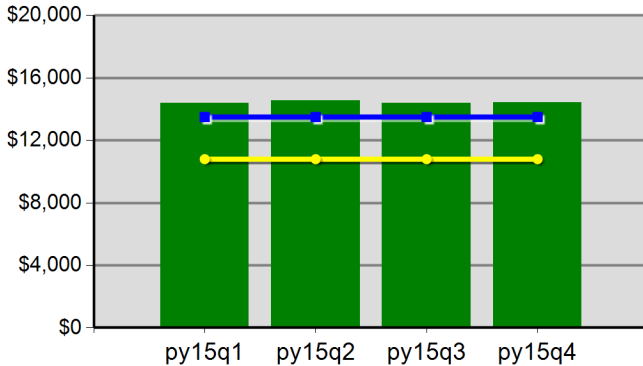
85.6%	85.7%	85.8%	84.5%
Neg Level	84.0%	80% Neg	67.2%

**DW Retention**



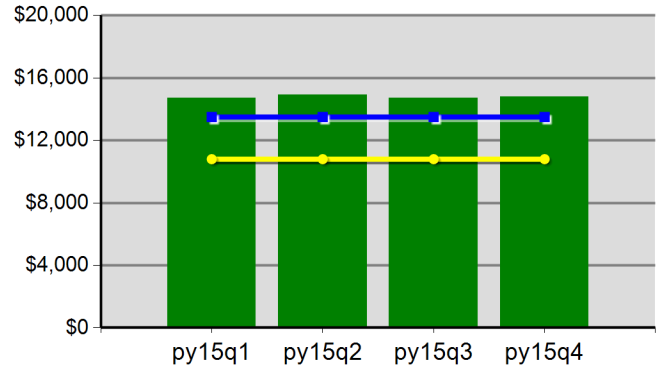
85.8%	85.5%	85.0%	84.1%
Neg Level	84.0%	80% Neg	67.2%

**Adult Average Earnings**



\$144.0	\$145.5	\$143.8	\$144.4
Neg Level	\$13,500.0	80% Neg	\$10,800.0

**DW Average Earnings**

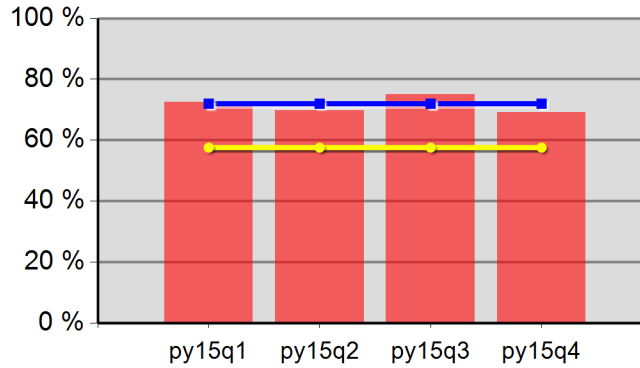


\$147.2	\$149.0	\$147.0	\$148.1
Neg Level	\$13,500.0	80% Neg	\$10,800.0

Office of Community Colleges and Workforce Development

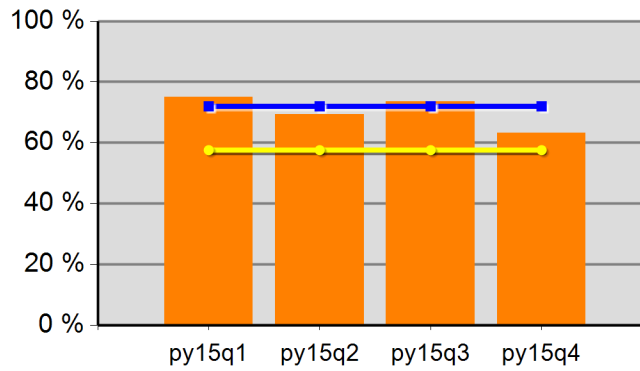
Oregon Northwest WIB  
Program Year 2015 Rolling 4 Quarters

**Youth Employment or Education**



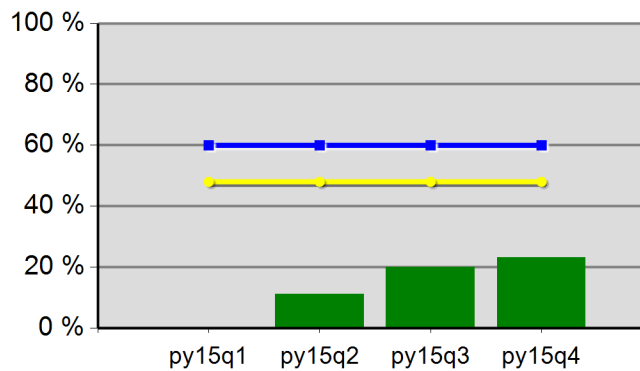
72.5%	69.7%	75.0%	69.2%
Neg Level	72.0%	80% Neg	57.6%

**Youth Degree or Certificate**



75.0%	69.3%	73.5%	63.3%
Neg Level	72.0%	80% Neg	57.6%

**Youth Literacy and Numeracy Gains**



0.0%	11.1%	20.0%	23.1%
Neg Level	60.0%	80% Neg	48.0%

# WIA Annual Report (ETA Form 9091)

Worksystems, Inc. PY-2015 Qtr-4 (Year-to-Date)

**Table M - Participation Levels**

Reported Information	Total Participants Served	Total Exitters
Total Adult Customers	52,419	43,827
Total Adults (self-service only)	5,926	2,815
WIA Adult	52,418	43,827
WIA Dislocated Worker	34,693	31,048
Total Youth (14-21)	734	344
Younger Youth (14-18)	509	270
Older Youth (19-21)	225	74
Out-of-School Youth	452	128
In-School Youth	282	216

**Table B - Adult Program Results**

Reported Information	Negotiated Performance Level (80%)	Actual Performance	
Entered Employment Rate	56.5% (45.2%)	64.5%	23,647 36,679
Employment Retention Rate	84.0% (67.2%)	86.0%	24,830 28,882
Six-Month Average Earnings	\$15,200.0 (\$12,160.0)	\$16,961.6	421,155,332 24,830
Employment and Credential Rate		23.9%	133 557
Credential Attainment Rate		30.2%	172 570

**Table C - Outcomes for Adult Special Populations**

Reported Information	Public Assistance Recipients Receiving Intensive or Training Services		Veterans		Individuals with Disabilities		Older Individuals	
Entered Employment Rate	65.6%	141 215	61.4%	1,594 2,594	49.2%	699 1,420	57.3%	3,742 6,526
Employment Retention Rate	85.5%	142 166	83.5%	1,593 1,908	78.1%	605 775	83.8%	3,835 4,574
Six-Month Average Earnings	\$12,733.8	1,808,197 142	\$19,419.4	30,935,172 1,593	\$12,784.3	7,734,486 605	\$17,777.5	68,176,883 3,835
Employment and Credential Rate	22.2%	8 36	16.7%	* *	40.0%	8 20	19.3%	11 57

**Table D - Other Outcome Information by Service Level for the Adult Program**

Reported Information	Individuals Who Only Received Core Services		Individuals who Only Received Core and Intensive Services		Individuals who Received Training Services	
Entered Employment Rate	64.0%	22,157 34,635	70.8%	1,143 1,614	80.7%	347 430
Employment Retention Rate	86.0%	23,298 27,089	84.3%	1,242 1,473	90.6%	290 320
Six-Month Average Earnings	\$17,051.9	397,275,945 23,298	\$15,300.1	19,002,681 1,242	\$16,816.2	4,876,706 290

\* Data suppressed for confidentiality purposes

WIA Annual Report (ETA Form 9091)

Worksystems, Inc. PY-2015 Qtr-4 (Year-to-Date)

**Table E - Dislocated Worker Program Results**

Reported Information	Negotiated Performance Level (80%)	Actual Performance	
Entered Employment Rate	56.5% (45.2%)	64.9%	18,981 29,257
Employment Retention Rate	84.0% (67.2%)	86.3%	19,629 22,734
Six-Month Average Earnings	\$15,300.0 (\$12,240.0)	\$17,712.8	347,685,295 19,629
Employment and Credential Rate		23.8%	81 340
Credential Attainment Rate		30.1%	103 342

**Table F - Outcomes for Dislocated Worker Special Populations**

Reported Information	Veterans		Individuals with Disabilities		Older Individuals		Displaced Homemakers	
Entered Employment Rate	61.7%	1,351 2,188	50.0%	530 1,060	58.6%	3,232 5,512	60.6%	1,373 2,267
Employment Retention Rate	83.5%	1,322 1,583	78.5%	482 614	84.1%	3,275 3,896	80.9%	1,425 1,762
Six-Month Average Earnings	\$19,772.7	26,139,501 1,322	\$13,202.5	6,363,595 482	\$18,338.6	60,059,040 3,275	\$12,585.2	17,933,956 1,425
Employment and Credential Rate	13.6%	* *	46.7%	7 15	16.7%	8 48	13.5%	7 52

**Table G - Other Outcome Information by Service Level for the Dislocated Worker Program**

Reported Information	Individuals Who Only Received Core Services		Individuals who Only Received Core and Intensive Services		Individuals who Received Training Services	
Entered Employment Rate	64.4%	18,087 28,067	72.9%	655 898	81.8%	239 292
Employment Retention Rate	86.4%	18,754 21,716	85.3%	700 821	88.8%	175 197
Six-Month Average Earnings	\$17,782.2	333,487,560 18,754	\$15,750.6	11,025,427 700	\$18,127.5	3,172,307 175

**Table L - Other Reported Information**

Reported Information	Adults		Dislocated Workers		Older Youth	
12-Month Employment Retention	87.0%	25,992 29,877	87.2%	20,659 23,701	78.1%	75 96
12-Month Earnings Increase/Replacement	(\$262.9)	-7,855,282 29,877	\$95.6	363,954,313 380,736,559	\$5,305.6	440,365 83
Entered Non-Traditional Employment	0.1%	35 23,647	0.2%	31 18,981	6.1%	* *
Wages At Entered Employment	\$7,089.8	167,652,135 23,647	\$7,427.6	140,982,731 18,981	\$3,339.0	207,015 62
Employment Related Training	27.7%	96 347	31.8%	76 239		

\* Data suppressed for confidentiality purposes

# WIA Annual Report (ETA Form 9091)

Worksystems, Inc. PY-2015 Qtr-4 (Year-to-Date)

### Table H1 - Youth (14-21) Program Results

Reported Information	Negotiated Performance Level (80%)	Actual Performance	
Placement in Employment or Education	78.0% (62.4%)	79.3%	303 382
Attainment of a Degree or Certificate	72.0% (57.6%)	65.9%	257 390
Literacy and Numeracy Gains	43.0% (34.4%)	63.7%	86 135
Credential Attainment Rate		65.9%	257 390

### Table H1.A - Outcomes for Youth Special Populations

Reported Information	Public Assistance Recipients		Veterans		Individuals with Disabilities		Out-of-School Youth	
Placement in Employment or Education	75.9%	101 133		0 0	75.0%	9 12	74.6%	106 142
Attainment of a Degree or Certificate	65.7%	88 134		0 0	90.9%	10 11	50.0%	65 130
Literacy and Numeracy Gains	63.6%	42 66		0 0	87.5%	7 8	63.7%	86 135

### Table H2 - Older Youth (19-21) Results

Reported Information	Negotiated Performance Level (80%)	Actual Performance	
Entered Employment Rate		72.5%	66 91
Employment Retention Rate		82.2%	88 107
Six Months Earnings Increase		\$5,081.5	508,147 100
Credential Rate		41.5%	44 106

### Table I - Outcomes for Older Youth Special Populations

Reported Information	Public Assistance Recipients		Veterans		Individuals with Disabilities		Out-of-School Youth	
Entered Employment Rate	70.5%	31 44		0 0	33.3%	*	70.5%	43 61
Employment Retention Rate	76.7%	33 43		0 0	100.0%	*	80.6%	58 72
Six Months Earnings Increase	\$4,944.2	202,712 41		0 0	\$5,439.5	*	\$5,451.4	365,241 67
Credential Rate	46.2%	24 52		0 0	33.3%	*	32.4%	23 71

### Table P - Veteran Priority of Service

Reported Information	Total Participants Served	Total Exiters
Received a Service During the Entry Period	2,981	2,981
Received a Staff Assisted Service During the Entry Period	2,981	2,633

\* Data suppressed for confidentiality purposes

# WIA Annual Report (ETA Form 9091)

Worksystems, Inc. PY-2015 Qtr-4 (Year-to-Date)

**Table Q - Veterans' Outcomes by Special Populations**

Reported Information	Adults		Dislocated Workers		Older Youth	
Entered Employment Rate	59.8%	492 823	82.6%	19 23	38.5%	30 78
Employment Retention Rate	83.6%	464 555	86.2%	25 29		0 0
Six-Month Average Earnings	\$19,151.4	8,886,255 464	\$19,295.2	482,379 25		0 0

Performance was Calculated: 8/12/2016 1:34:00 PM

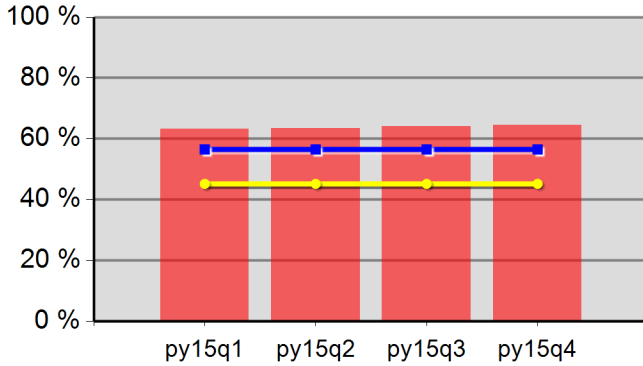
\* Data suppressed for confidentiality purposes



Office of Community Colleges and Workforce Development

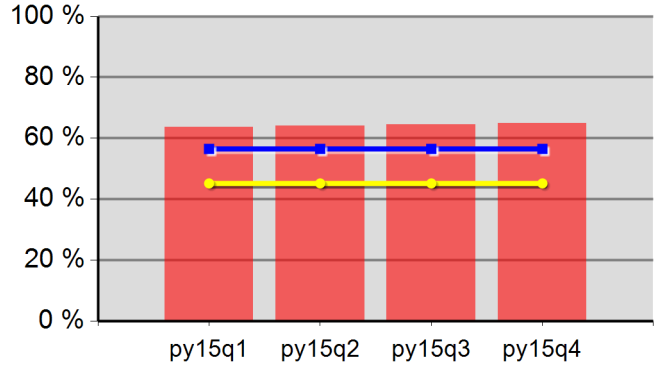
Worksystems, Inc.  
Program Year 2015 Rolling 4 Quarters

**Adult Entered Employment**



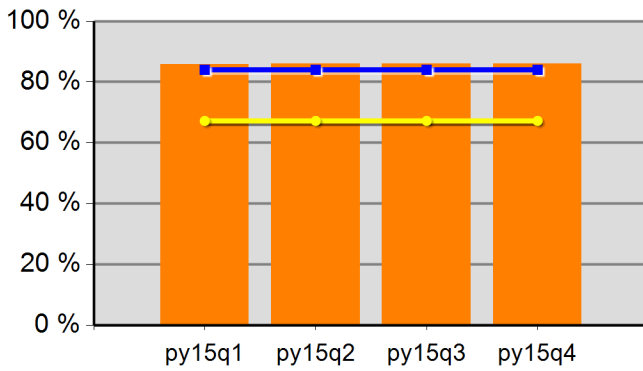
63.2%	63.5%	64.0%	64.5%
Neg Level	56.5%	80% Neg	45.2%

**DW Entered Employment**



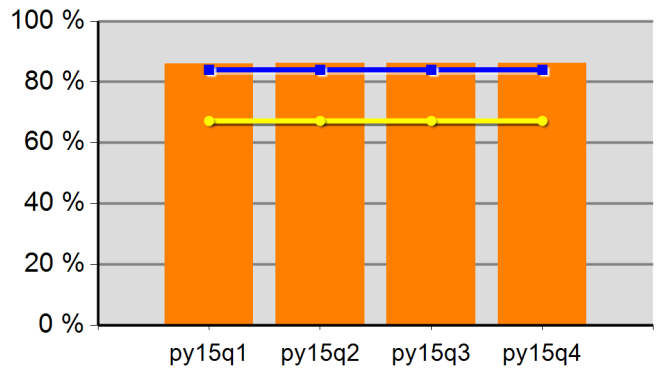
63.6%	64.0%	64.4%	64.9%
Neg Level	56.5%	80% Neg	45.2%

**Adult Retention**



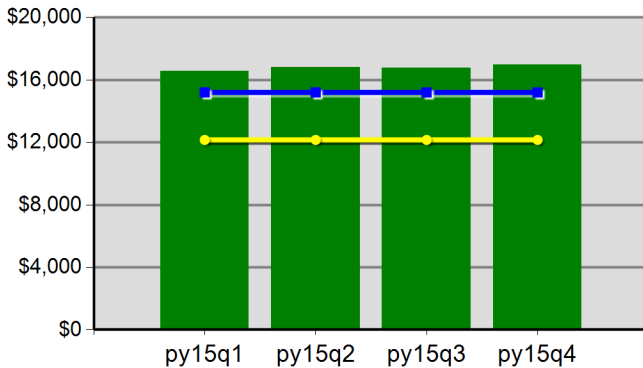
85.8%	86.0%	86.0%	86.0%
Neg Level	84.0%	80% Neg	67.2%

**DW Retention**



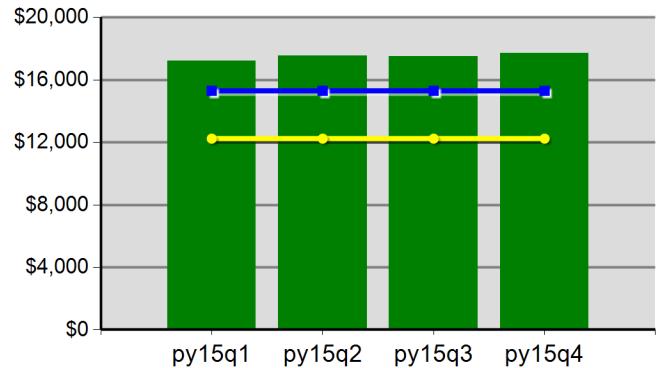
85.9%	86.2%	86.3%	86.3%
Neg Level	84.0%	80% Neg	67.2%

**Adult Average Earnings**



\$165.5	\$168.2	\$167.8	\$169.6
Neg Level	\$15,200.0	80% Neg	\$12,160.0

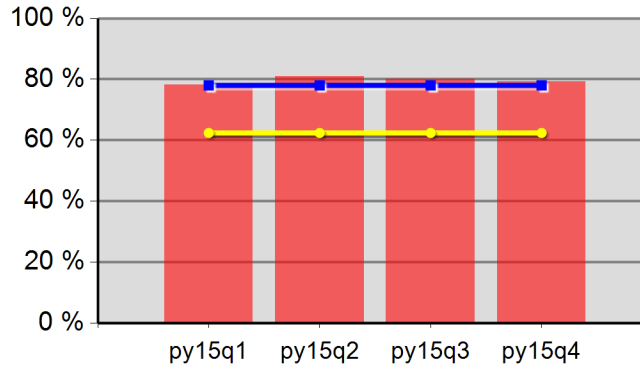
**DW Average Earnings**



\$172.1	\$175.4	\$174.9	\$177.1
Neg Level	\$15,300.0	80% Neg	\$12,240.0

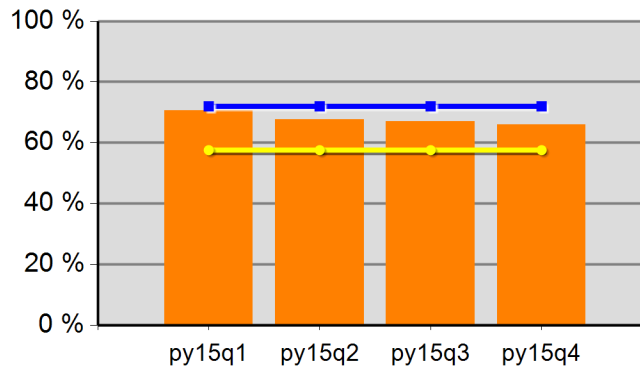
Worksystems, Inc.  
 Program Year 2015 Rolling 4 Quarters

**Youth Employment or Education**



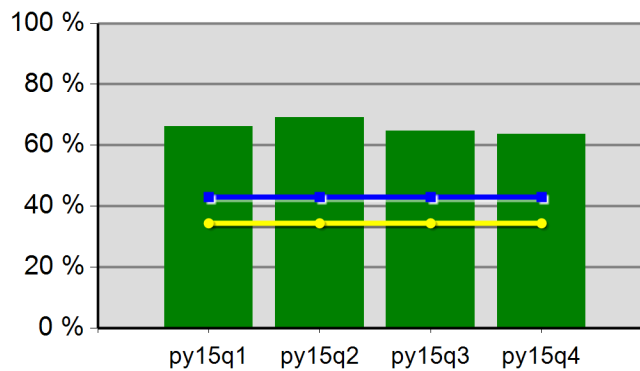
78.2%	80.9%	80.0%	79.3%
Neg Level	78.0%	80% Neg	62.4%

**Youth Degree or Certificate**



70.6%	67.7%	67.0%	65.9%
Neg Level	72.0%	80% Neg	57.6%

**Youth Literacy and Numeracy Gains**



66.1%	69.1%	64.7%	63.7%
Neg Level	43.0%	80% Neg	34.4%

# WIA Annual Report (ETA Form 9091)

Clackamas Workforce Partnership PY-2015 Qtr-4 (Year-to-Date)

**Table M - Participation Levels**

Reported Information	Total Participants Served	Total Exitters
Total Adult Customers	10,408	8,588
Total Adults (self-service only)	1,691	782
WIA Adult	10,408	8,587
WIA Dislocated Worker	6,578	5,832
Total Youth (14-21)	258	121
Younger Youth (14-18)	198	101
Older Youth (19-21)	60	20
Out-of-School Youth	195	79
In-School Youth	63	42

**Table B - Adult Program Results**

Reported Information	Negotiated Performance Level (80%)	Actual Performance	
Entered Employment Rate	57.0% (45.6%)	62.3%	4,557 7,319
Employment Retention Rate	86.0% (68.8%)	85.2%	4,921 5,773
Six-Month Average Earnings	\$16,200.0 (\$12,960.0)	\$17,192.3	84,482,820 4,914
Employment and Credential Rate		10.0%	20 200
Credential Attainment Rate		12.0%	25 208

**Table C - Outcomes for Adult Special Populations**

Reported Information	Public Assistance Recipients Receiving Intensive or Training Services		Veterans		Individuals with Disabilities		Older Individuals	
Entered Employment Rate	68.5%	63 92	62.5%	351 562	44.1%	109 247	57.7%	825 1,430
Employment Retention Rate	89.0%	65 73	84.7%	370 437	74.8%	80 107	84.5%	882 1,044
Six-Month Average Earnings	\$10,543.8	674,800 64	\$20,441.8	7,563,460 370	\$14,339.5	1,147,161 80	\$19,701.1	17,356,667 881
Employment and Credential Rate	16.7%	*	4.5%	*		*	4.8%	*

**Table D - Other Outcome Information by Service Level for the Adult Program**

Reported Information	Individuals Who Only Received Core Services		Individuals who Only Received Core and Intensive Services		Individuals who Received Training Services	
Entered Employment Rate	61.0%	4,118 6,753	72.8%	295 405	89.4%	144 161
Employment Retention Rate	85.0%	4,438 5,221	87.7%	362 413	87.1%	121 139
Six-Month Average Earnings	\$17,357.1	77,013,243 4,437	\$15,557.2	5,569,477 358	\$15,967.2	1,900,100 119

\* Data suppressed for confidentiality purposes

WIA Annual Report (ETA Form 9091)

Clackamas Workforce Partnership PY-2015 Qtr-4 (Year-to-Date)

**Table E - Dislocated Worker Program Results**

Reported Information	Negotiated Performance Level (80%)	Actual Performance	
Entered Employment Rate	57.0% (45.6%)	63.0%	3,521 5,591
Employment Retention Rate	86.0% (68.8%)	85.8%	3,844 4,481
Six-Month Average Earnings	\$16,200.0 (\$12,960.0)	\$18,119.7	69,597,657 3,841
Employment and Credential Rate		12.4%	18 145
Credential Attainment Rate		15.4%	23 149

**Table F - Outcomes for Dislocated Worker Special Populations**

Reported Information	Veterans		Individuals with Disabilities		Older Individuals		Displaced Homemakers	
Entered Employment Rate	61.4%	289 471	45.0%	76 169	57.9%	702 1,212	58.5%	330 564
Employment Retention Rate	83.6%	301 360	74.4%	58 78	85.1%	766 900	79.8%	297 372
Six-Month Average Earnings	\$20,821.2	6,267,171 301	\$14,456.8	838,493 58	\$20,359.0	15,574,645 765	\$13,154.6	3,893,755 296
Employment and Credential Rate	5.3%	* *		* *	4.8%	* *	16.7%	* *

**Table G - Other Outcome Information by Service Level for the Dislocated Worker Program**

Reported Information	Individuals Who Only Received Core Services		Individuals who Only Received Core and Intensive Services		Individuals who Received Training Services	
Entered Employment Rate	61.9%	3,216 5,198	72.6%	196 270	88.6%	109 123
Employment Retention Rate	85.7%	3,523 4,112	86.3%	226 262	88.8%	95 107
Six-Month Average Earnings	\$18,266.8	64,353,949 3,523	\$16,525.0	3,718,125 225	\$16,404.1	1,525,583 93

**Table L - Other Reported Information**

Reported Information	Adults		Dislocated Workers		Older Youth	
12-Month Employment Retention	85.8%	5,132 5,984	86.5%	4,068 4,703	90.0%	9 10
12-Month Earnings Increase/Replacement	(\$415.9)	-2,482,373 5,968	\$95.3	72,627,564 76,181,951	\$3,816.3	38,163 10
Entered Non-Traditional Employment	0.3%	15 4,557	0.3%	9 3,521		0 12
Wages At Entered Employment	\$7,153.9	32,542,988 4,549	\$7,624.1	26,798,849 3,515	\$2,894.8	34,738 12
Employment Related Training	52.8%	76 144	53.2%	58 109		

\* Data suppressed for confidentiality purposes

# WIA Annual Report (ETA Form 9091)

Clackamas Workforce Partnership PY-2015 Qtr-4 (Year-to-Date)

**Table H1 - Youth (14-21) Program Results**

Reported Information	Negotiated Performance Level (80%)	Actual Performance	
Placement in Employment or Education	68.0% (54.4%)	70.6%	72 102
Attainment of a Degree or Certificate	75.0% (60.0%)	56.3%	58 103
Literacy and Numeracy Gains	45.0% (36.0%)	35.8%	29 81
Credential Attainment Rate		56.3%	58 103

**Table H1.A - Outcomes for Youth Special Populations**

Reported Information	Public Assistance Recipients		Veterans		Individuals with Disabilities		Out-of-School Youth	
Placement in Employment or Education	65.2%	43 66		0 0	72.2%	13 18	63.5%	33 52
Attainment of a Degree or Certificate	51.6%	32 62		0 0	84.2%	16 19	37.0%	17 46
Literacy and Numeracy Gains	35.8%	19 53		0 0	33.3%	* *	35.8%	29 81

**Table H2 - Older Youth (19-21) Results**

Reported Information	Negotiated Performance Level (80%)	Actual Performance	
Entered Employment Rate		63.2%	12 19
Employment Retention Rate		72.7%	8 11
Six Months Earnings Increase		\$3,829.5	42,125 11
Credential Rate		29.6%	8 27

**Table I - Outcomes for Older Youth Special Populations**

Reported Information	Public Assistance Recipients		Veterans		Individuals with Disabilities		Out-of-School Youth	
Entered Employment Rate	64.7%	11 17		0 0		* *	53.3%	8 15
Employment Retention Rate	75.0%	6 8		0 0		0 0	66.7%	6 9
Six Months Earnings Increase	\$4,631.3	37,050 8		0 0		0 0	\$3,321.8	29,896 9
Credential Rate	36.4%	8 22		0 0		* *	23.8%	* *

**Table P - Veteran Priority of Service**

Reported Information	Total Participants Served	Total Exiters
Received a Service During the Entry Period	688	688
Received a Staff Assisted Service During the Entry Period	688	556

\* Data suppressed for confidentiality purposes

# WIA Annual Report (ETA Form 9091)

Clackamas Workforce Partnership PY-2015 Qtr-4 (Year-to-Date)

**Table Q - Veterans' Outcomes by Special Populations**

Reported Information	Adults		Dislocated Workers		Older Youth	
Entered Employment Rate	61.1%	116 190	95.5%	21 22	25.9%	7 27
Employment Retention Rate	81.8%	117 143	92.0%	23 25		0 0
Six-Month Average Earnings	\$20,211.6	2,364,757 117	\$18,023.4	414,538 23		0 0

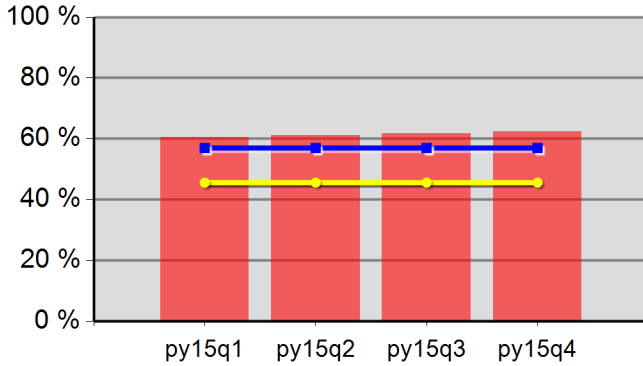
Performance was Calculated: 8/12/2016 1:34:23 PM

\* Data suppressed for confidentiality purposes

Office of Community Colleges and Workforce Development

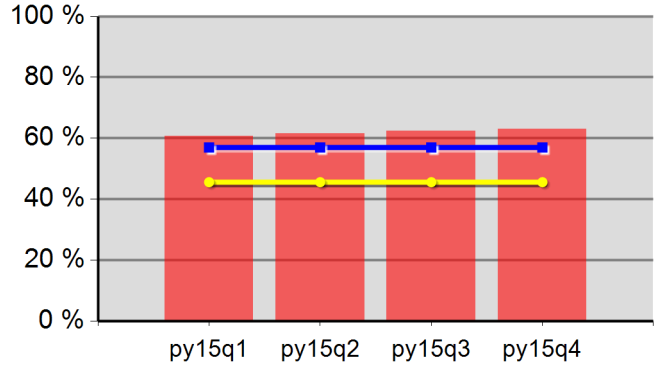
Clackamas Workforce Partnership  
Program Year 2015 Rolling 4 Quarters

**Adult Entered Employment**



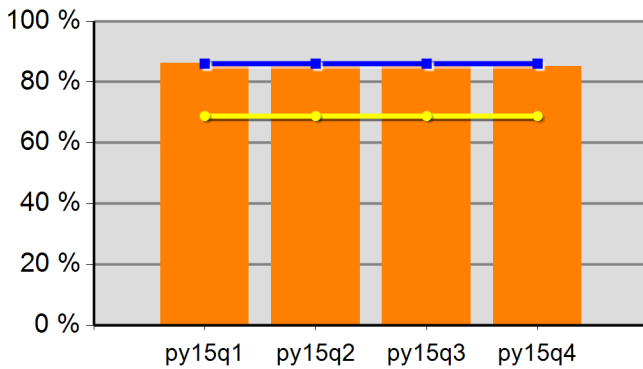
60.5%	61.2%	61.8%	62.3%
Neg Level	57.0%	80% Neg	45.6%

**DW Entered Employment**



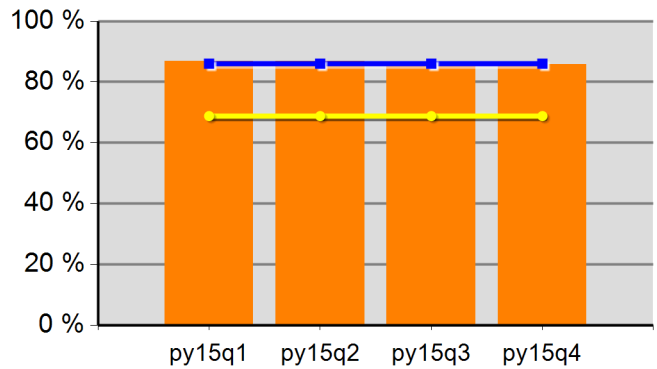
60.8%	61.6%	62.3%	63.0%
Neg Level	57.0%	80% Neg	45.6%

**Adult Retention**



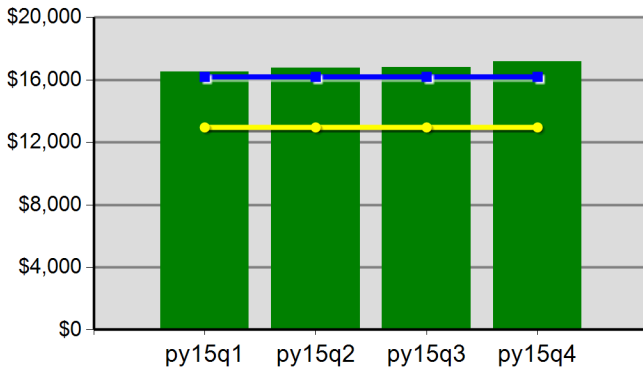
86.3%	86.0%	85.4%	85.2%
Neg Level	86.0%	80% Neg	68.8%

**DW Retention**



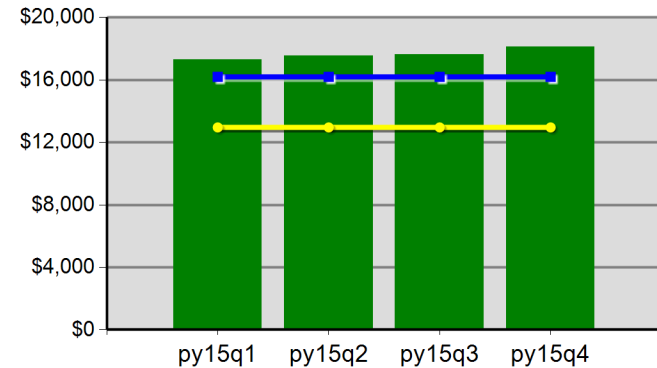
86.8%	86.8%	86.1%	85.8%
Neg Level	86.0%	80% Neg	68.8%

**Adult Average Earnings**



\$165.0	\$167.7	\$168.3	\$171.9
Neg Level	\$16,200.0	80% Neg	\$12,960.0

**DW Average Earnings**

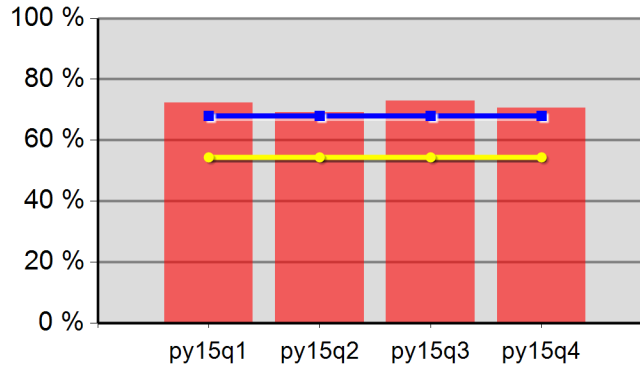


\$172.9	\$175.6	\$176.5	\$181.2
Neg Level	\$16,200.0	80% Neg	\$12,960.0

Office of Community Colleges and Workforce Development

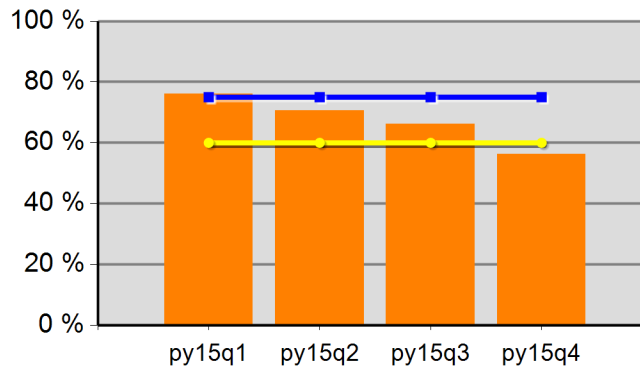
Clackamas Workforce Partnership  
Program Year 2015 Rolling 4 Quarters

**Youth Employment or Education**



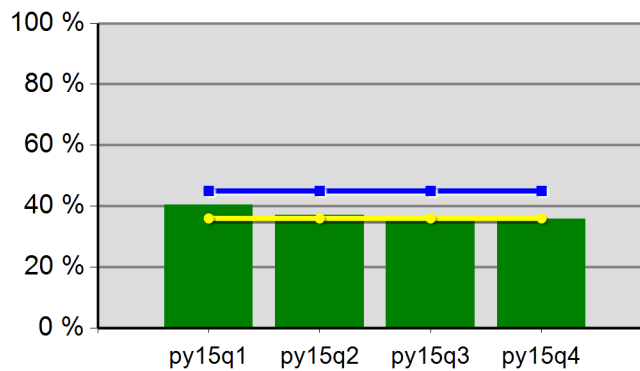
72.2%	69.1%	73.0%	70.6%
Neg Level	68.0%	80% Neg	54.4%

**Youth Degree or Certificate**



76.1%	70.7%	66.1%	56.3%
Neg Level	75.0%	80% Neg	60.0%

**Youth Literacy and Numeracy Gains**



40.4%	37.0%	36.1%	35.8%
Neg Level	45.0%	80% Neg	36.0%



# WIA Annual Report (ETA Form 9091)

Incite, Inc. PY-2015 Qtr-4 (Year-to-Date)

**Table M - Participation Levels**

Reported Information	Total Participants Served	Total Exitters
Total Adult Customers	24,908	19,836
Total Adults (self-service only)	5,838	2,838
WIA Adult	24,904	19,831
WIA Dislocated Worker	14,274	12,976
Total Youth (14-21)	351	167
Younger Youth (14-18)	253	129
Older Youth (19-21)	98	38
Out-of-School Youth	248	84
In-School Youth	103	83

**Table B - Adult Program Results**

Reported Information	Negotiated Performance Level (80%)	Actual Performance	
Entered Employment Rate	59.0% (47.2%)	65.0%	9,861 15,171
Employment Retention Rate	85.0% (68.0%)	85.9%	11,430 13,308
Six-Month Average Earnings	\$13,400.0 (\$10,720.0)	\$14,425.0	164,877,983 11,430
Employment and Credential Rate		8.0%	29 363
Credential Attainment Rate		8.3%	31 375

**Table C - Outcomes for Adult Special Populations**

Reported Information	Public Assistance Recipients Receiving Intensive or Training Services		Veterans		Individuals with Disabilities		Older Individuals	
Entered Employment Rate	68.7%	92 134	59.7%	900 1,508	48.6%	270 556	59.8%	1,739 2,907
Employment Retention Rate	81.4%	114 140	83.8%	991 1,182	77.1%	225 292	83.2%	1,939 2,330
Six-Month Average Earnings	\$11,899.5	1,356,539 114	\$17,170.1	17,015,555 991	\$12,411.8	2,792,656 225	\$14,869.5	28,831,876 1,939
Employment and Credential Rate	24.3%	9 37	5.4%	* *	25.0%	* *	3.4%	* *

**Table D - Other Outcome Information by Service Level for the Adult Program**

Reported Information	Individuals Who Only Received Core Services		Individuals who Only Received Core and Intensive Services		Individuals who Received Training Services	
Entered Employment Rate	64.5%	9,316 14,447	70.2%	355 506	87.2%	190 218
Employment Retention Rate	85.7%	10,605 12,374	85.8%	405 472	90.9%	420 462
Six-Month Average Earnings	\$14,339.0	152,064,846 10,605	\$13,469.1	5,454,993 405	\$17,519.4	7,358,143 420

\* Data suppressed for confidentiality purposes

WIA Annual Report (ETA Form 9091)

Incite, Inc. PY-2015 Qtr-4 (Year-to-Date)

**Table E - Dislocated Worker Program Results**

Reported Information	Negotiated Performance Level (80%)	Actual Performance	
Entered Employment Rate	59.0% (47.2%)	65.9%	7,940 12,057
Employment Retention Rate	84.0% (67.2%)	85.9%	8,968 10,446
Six-Month Average Earnings	\$13,500.0 (\$10,800.0)	\$14,644.1	131,328,353 8,968
Employment and Credential Rate		8.2%	16 195
Credential Attainment Rate		8.6%	17 198

**Table F - Outcomes for Dislocated Worker Special Populations**

Reported Information	Veterans		Individuals with Disabilities		Older Individuals		Displaced Homemakers	
Entered Employment Rate	59.4%	743 1,250	50.9%	207 407	61.6%	1,489 2,417	58.9%	578 982
Employment Retention Rate	83.9%	784 935	78.1%	175 224	82.6%	1,626 1,969	82.8%	644 778
Six-Month Average Earnings	\$17,201.8	13,486,195 784	\$12,728.8	2,227,538 175	\$14,991.3	24,375,809 1,626	\$12,012.2	7,735,834 644
Employment and Credential Rate	7.7%	* *		0 6	4.8%	* *	5.0%	* *

**Table G - Other Outcome Information by Service Level for the Dislocated Worker Program**

Reported Information	Individuals Who Only Received Core Services		Individuals who Only Received Core and Intensive Services		Individuals who Received Training Services	
Entered Employment Rate	65.4%	7,556 11,560	73.2%	260 355	87.3%	124 142
Employment Retention Rate	85.7%	8,465 9,873	86.0%	283 329	90.2%	220 244
Six-Month Average Earnings	\$14,638.3	123,912,880 8,465	\$13,443.5	3,804,507 283	\$16,413.5	3,610,967 220

**Table L - Other Reported Information**

Reported Information	Adults		Dislocated Workers		Older Youth	
12-Month Employment Retention	86.4%	11,834 13,701	86.1%	9,336 10,845	75.7%	28 37
12-Month Earnings Increase/Replacement	(\$194.2)	-2,660,801 13,699	\$97.6	132,031,760 135,287,400	\$3,407.4	126,072 37
Entered Non-Traditional Employment	0.1%	12 9,861	0.1%	10 7,940	4.0%	* *
Wages At Entered Employment	\$5,746.3	56,664,588 9,861	\$5,890.2	46,768,286 7,940	\$3,116.8	77,919 25
Employment Related Training	38.9%	74 190	37.1%	46 124		

\* Data suppressed for confidentiality purposes

WIA Annual Report (ETA Form 9091)

Incite, Inc. PY-2015 Qtr-4 (Year-to-Date)

**Table H1 - Youth (14-21) Program Results**

Reported Information	Negotiated Performance Level (80%)	Actual Performance	
Placement in Employment or Education	70.0% (56.0%)	74.7%	112 150
Attainment of a Degree or Certificate	78.0% (62.4%)	63.0%	92 146
Literacy and Numeracy Gains	35.0% (28.0%)	51.2%	42 82
Credential Attainment Rate		63.0%	92 146

**Table H1.A - Outcomes for Youth Special Populations**

Reported Information	Public Assistance Recipients		Veterans		Individuals with Disabilities		Out-of-School Youth	
Placement in Employment or Education	71.3%	72 101		0 0	60.0%	6 10	66.2%	51 77
Attainment of a Degree or Certificate	57.6%	57 99		0 0	44.4%	* *	50.7%	36 71
Literacy and Numeracy Gains	48.2%	27 56		0 0	60.0%	* *	51.2%	42 82

**Table H2 - Older Youth (19-21) Results**

Reported Information	Negotiated Performance Level (80%)	Actual Performance	
Entered Employment Rate		65.8%	25 38
Employment Retention Rate		71.0%	22 31
Six Months Earnings Increase		\$4,068.0	126,107 31
Credential Rate		35.9%	14 39

**Table I - Outcomes for Older Youth Special Populations**

Reported Information	Public Assistance Recipients		Veterans		Individuals with Disabilities		Out-of-School Youth	
Entered Employment Rate	63.6%	21 33		0 0		* *	62.9%	22 35
Employment Retention Rate	82.6%	19 23		0 0		* *	74.1%	20 27
Six Months Earnings Increase	\$5,512.3	126,782 23		0 0	(\$1,796.0)	* *	\$4,080.9	110,184 27
Credential Rate	35.3%	12 34		0 0		* *	30.6%	11 36

**Table P - Veteran Priority of Service**

Reported Information	Total Participants Served	Total Exiters
Received a Service During the Entry Period	1,860	1,860
Received a Staff Assisted Service During the Entry Period	1,860	1,430

\* Data suppressed for confidentiality purposes

WIA Annual Report (ETA Form 9091)

Incite, Inc. PY-2015 Qtr-4 (Year-to-Date)

**Table Q - Veterans' Outcomes by Special Populations**

Reported Information	Adults		Dislocated Workers		Older Youth	
Entered Employment Rate	54.8%	296 540	81.8%	18 22	43.8%	32 73
Employment Retention Rate	83.0%	302 364	90.6%	29 32		0 0
Six-Month Average Earnings	\$16,516.6	4,988,024 302	\$19,654.5	569,981 29		0 0

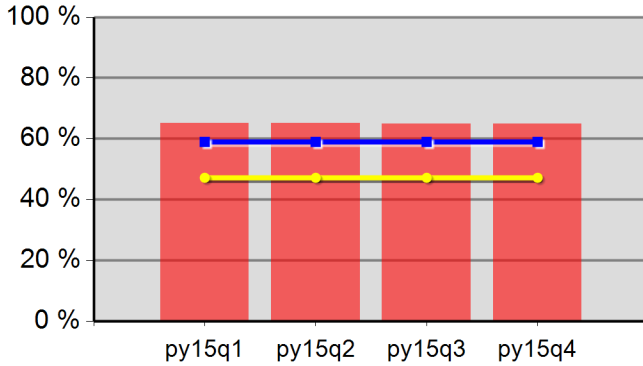
Performance was Calculated: 8/12/2016 1:34:40 PM

\* Data suppressed for confidentiality purposes

Office of Community Colleges and Workforce Development

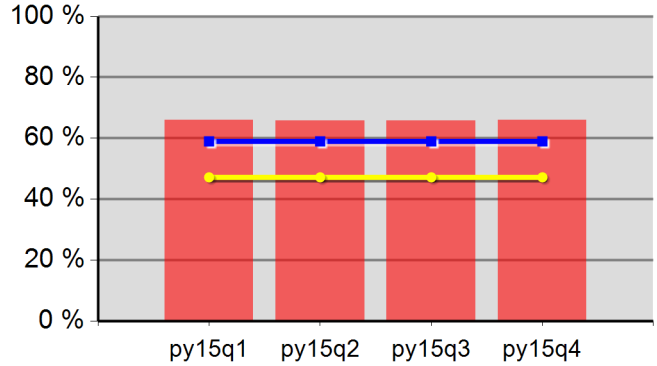
Incite, Inc.  
Program Year 2015 Rolling 4 Quarters

**Adult Entered Employment**



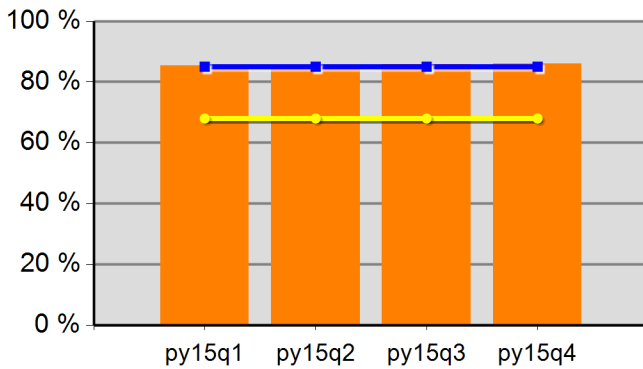
65.1%	65.1%	64.9%	65.0%
Neg Level	59.0%	80% Neg	47.2%

**DW Entered Employment**



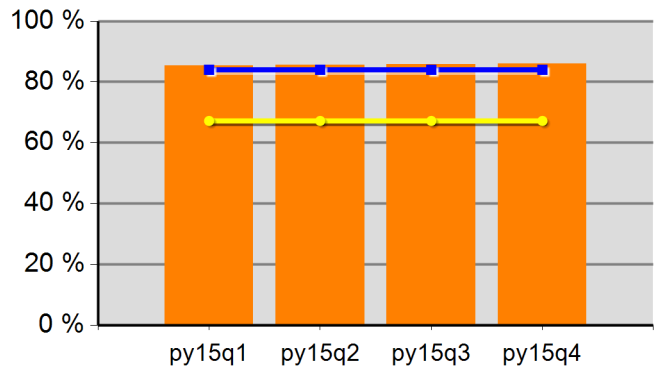
65.9%	65.8%	65.7%	65.9%
Neg Level	59.0%	80% Neg	47.2%

**Adult Retention**



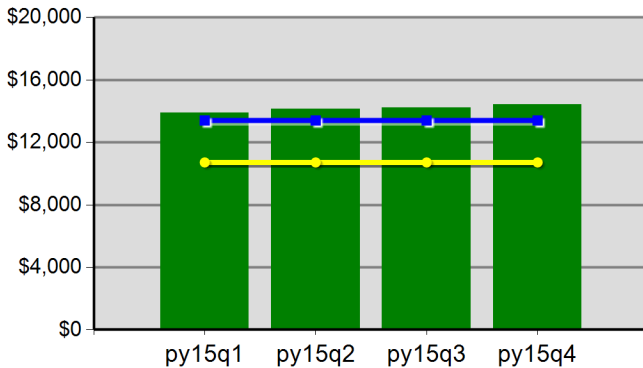
85.4%	85.6%	85.7%	85.9%
Neg Level	85.0%	80% Neg	68.0%

**DW Retention**



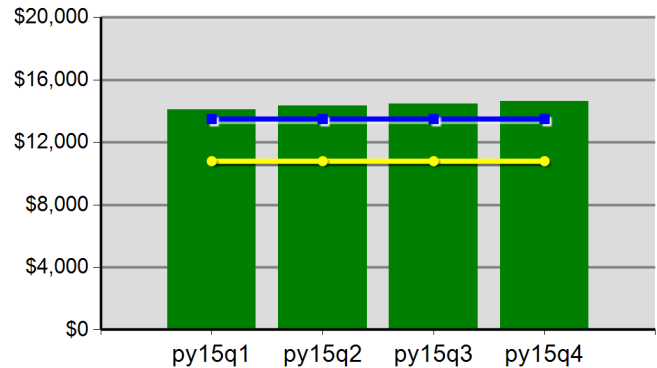
85.4%	85.5%	85.7%	85.9%
Neg Level	84.0%	80% Neg	67.2%

**Adult Average Earnings**



\$138.8	\$141.2	\$142.4	\$144.3
Neg Level	\$13,400.0	80% Neg	\$10,720.0

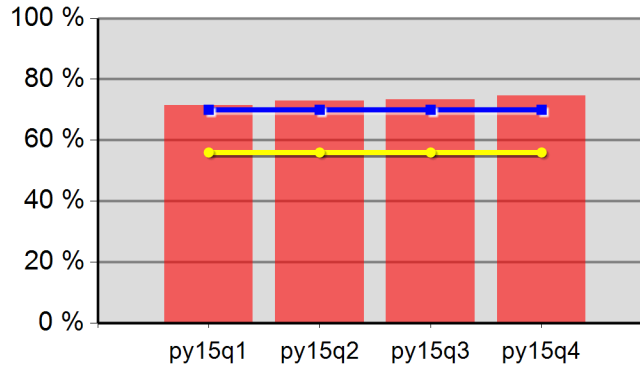
**DW Average Earnings**



\$141.0	\$143.2	\$144.8	\$146.4
Neg Level	\$13,500.0	80% Neg	\$10,800.0

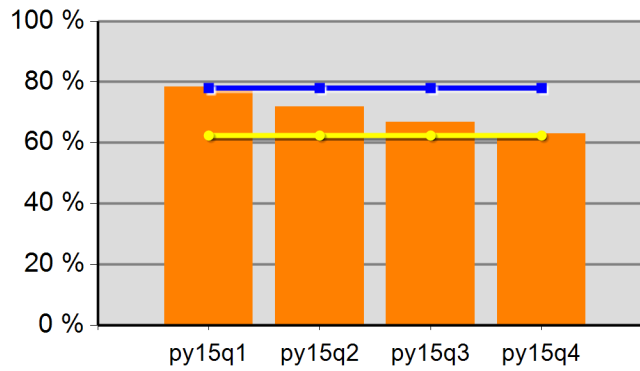
Incite, Inc.  
Program Year 2015 Rolling 4 Quarters

**Youth Employment or Education**



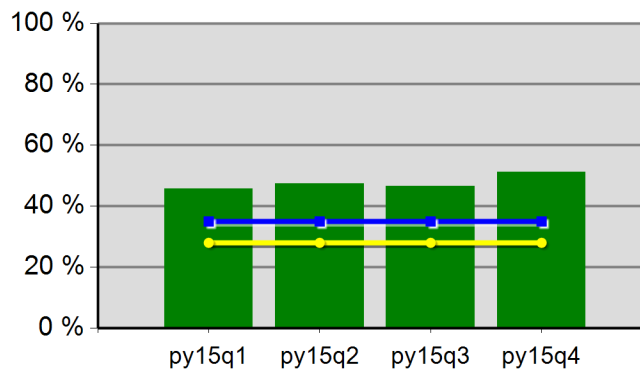
71.5%	72.9%	73.3%	74.7%
Neg Level	70.0%	80% Neg	56.0%

**Youth Degree or Certificate**



78.4%	71.8%	66.9%	63.0%
Neg Level	78.0%	80% Neg	62.4%

**Youth Literacy and Numeracy Gains**



45.7%	47.4%	46.5%	51.2%
Neg Level	35.0%	80% Neg	28.0%

# WIA Annual Report (ETA Form 9091)

Lane Workforce Partnership PY-2015 Qtr-4 (Year-to-Date)

**Table M - Participation Levels**

Reported Information	Total Participants Served	Total Exitters
Total Adult Customers	14,171	11,329
Total Adults (self-service only)	3,771	1,654
WIA Adult	14,169	11,327
WIA Dislocated Worker	7,847	7,375
Total Youth (14-21)	191	113
Younger Youth (14-18)	137	85
Older Youth (19-21)	54	28
Out-of-School Youth	106	39
In-School Youth	85	74

**Table B - Adult Program Results**

Reported Information	Negotiated Performance Level (80%)	Actual Performance	
Entered Employment Rate	57.6% (46.1%)	63.4%	5,167 8,146
Employment Retention Rate	83.6% (66.9%)	85.9%	5,758 6,700
Six-Month Average Earnings	\$12,900.0 (\$10,320.0)	\$14,121.4	81,310,939 5,758
Employment and Credential Rate		15.4%	29 188
Credential Attainment Rate		18.0%	35 194

**Table C - Outcomes for Adult Special Populations**

Reported Information	Public Assistance Recipients Receiving Intensive or Training Services		Veterans		Individuals with Disabilities		Older Individuals	
Entered Employment Rate	66.7%	6 9	59.8%	458 766	52.2%	143 274	58.1%	983 1,692
Employment Retention Rate	77.8%	7 9	85.1%	481 565	79.6%	113 142	82.8%	1,020 1,232
Six-Month Average Earnings	\$9,819.9	68,739 7	\$15,792.0	7,595,957 481	\$11,179.3	1,263,256 113	\$14,291.7	14,577,517 1,020
Employment and Credential Rate	50.0%	* *	13.3%	* *	25.0%	* *	22.0%	9 41

**Table D - Other Outcome Information by Service Level for the Adult Program**

Reported Information	Individuals Who Only Received Core Services		Individuals who Only Received Core and Intensive Services		Individuals who Received Training Services	
Entered Employment Rate	62.8%	4,954 7,891	75.7%	84 111	89.6%	129 144
Employment Retention Rate	85.7%	5,469 6,383	91.1%	164 180	91.2%	125 137
Six-Month Average Earnings	\$14,035.1	76,757,783 5,469	\$14,548.3	2,385,921 164	\$17,337.9	2,167,234 125

\* Data suppressed for confidentiality purposes

WIA Annual Report (ETA Form 9091)

Lane Workforce Partnership PY-2015 Qtr-4 (Year-to-Date)

**Table E - Dislocated Worker Program Results**

Reported Information	Negotiated Performance Level (80%)	Actual Performance	
Entered Employment Rate	59.0% (47.2%)	63.7%	4,132 6,487
Employment Retention Rate	84.0% (67.2%)	86.0%	4,582 5,330
Six-Month Average Earnings	\$13,090.0 (\$10,472.0)	\$14,324.3	65,633,833 4,582
Employment and Credential Rate		15.6%	19 122
Credential Attainment Rate		19.2%	24 125

**Table F - Outcomes for Dislocated Worker Special Populations**

Reported Information	Veterans		Individuals with Disabilities		Older Individuals		Displaced Homemakers	
Entered Employment Rate	59.9%	368 614	53.5%	108 202	59.1%	832 1,408	63.1%	306 485
Employment Retention Rate	85.5%	396 463	80.4%	90 112	82.9%	873 1,053	83.1%	355 427
Six-Month Average Earnings	\$15,545.0	6,155,830 396	\$10,706.1	963,552 90	\$14,311.8	12,494,174 873	\$11,645.6	4,134,194 355
Employment and Credential Rate	16.7%	*	25.0%	*	14.7%	*	10.5%	*

**Table G - Other Outcome Information by Service Level for the Dislocated Worker Program**

Reported Information	Individuals Who Only Received Core Services		Individuals who Only Received Core and Intensive Services		Individuals who Received Training Services	
Entered Employment Rate	63.3%	3,993 6,311	65.7%	46 70	87.7%	93 106
Employment Retention Rate	85.9%	4,410 5,135	86.0%	80 93	90.2%	92 102
Six-Month Average Earnings	\$14,289.7	63,017,411 4,410	\$13,292.5	1,063,396 80	\$16,880.7	1,553,026 92

**Table L - Other Reported Information**

Reported Information	Adults		Dislocated Workers		Older Youth	
12-Month Employment Retention	85.9%	6,024 7,014	85.7%	4,806 5,607	72.7%	8 11
12-Month Earnings Increase/Replacement	(\$636.8)	-4,466,385 7,014	\$93.9	67,147,362 71,526,462	\$6,721.7	60,495 9
Entered Non-Traditional Employment	0.1%	*		*		0 16
Wages At Entered Employment	\$5,815.8	30,032,536 5,164	\$5,908.5	24,402,206 4,130	\$2,946.9	41,257 14
Employment Related Training	73.6%	95 129	73.1%	68 93		

\* Data suppressed for confidentiality purposes



# WIA Annual Report (ETA Form 9091)

Lane Workforce Partnership PY-2015 Qtr-4 (Year-to-Date)

### Table H1 - Youth (14-21) Program Results

Reported Information	Negotiated Performance Level (80%)	Actual Performance	
Placement in Employment or Education	77.0% (61.6%)	77.6%	76 98
Attainment of a Degree or Certificate	83.0% (66.4%)	76.1%	67 88
Literacy and Numeracy Gains	53.0% (42.4%)	48.6%	17 35
Credential Attainment Rate		76.1%	67 88

### Table H1.A - Outcomes for Youth Special Populations

Reported Information	Public Assistance Recipients		Veterans		Individuals with Disabilities		Out-of-School Youth	
Placement in Employment or Education	74.5%	41 55		0 0	56.3%	9 16	83.3%	25 30
Attainment of a Degree or Certificate	70.8%	34 48		0 0	71.4%	10 14	50.0%	10 20
Literacy and Numeracy Gains	53.3%	16 30		0 0	20.0%	* *	48.6%	17 35

### Table H2 - Older Youth (19-21) Results

Reported Information	Negotiated Performance Level (80%)	Actual Performance	
Entered Employment Rate		72.7%	16 22
Employment Retention Rate		66.7%	6 9
Six Months Earnings Increase		\$7,004.6	49,032 7
Credential Rate		30.4%	7 23

### Table I - Outcomes for Older Youth Special Populations

Reported Information	Public Assistance Recipients		Veterans		Individuals with Disabilities		Out-of-School Youth	
Entered Employment Rate	68.4%	13 19		0 0	33.3%	* *	82.4%	14 17
Employment Retention Rate	75.0%	6 8		0 0		0 0	71.4%	* *
Six Months Earnings Increase	\$7,004.6	49,032 7		0 0		0 0	\$7,314.0	43,884 6
Credential Rate	25.0%	* *		0 0		* *	27.8%	* *

### Table P - Veteran Priority of Service

Reported Information	Total Participants Served	Total Exiters
Received a Service During the Entry Period	1,041	1,041
Received a Staff Assisted Service During the Entry Period	1,041	792

\* Data suppressed for confidentiality purposes

# WIA Annual Report (ETA Form 9091)

Lane Workforce Partnership PY-2015 Qtr-4 (Year-to-Date)

**Table Q - Veterans' Outcomes by Special Populations**

Reported Information	Adults		Dislocated Workers		Older Youth	
Entered Employment Rate	54.7%	128 234	100.0%	9 9	40.5%	15 37
Employment Retention Rate	78.8%	119 151	57.1%	* *		0 0
Six-Month Average Earnings	\$14,369.0	1,709,907 119	\$12,751.8	* *		0 0

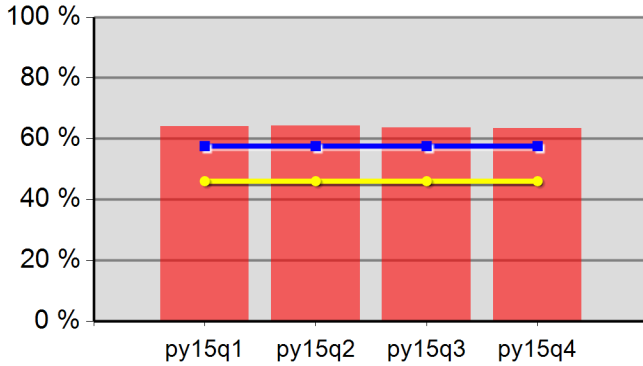
Performance was Calculated: 8/12/2016 1:34:58 PM

\* Data suppressed for confidentiality purposes

Office of Community Colleges and Workforce Development

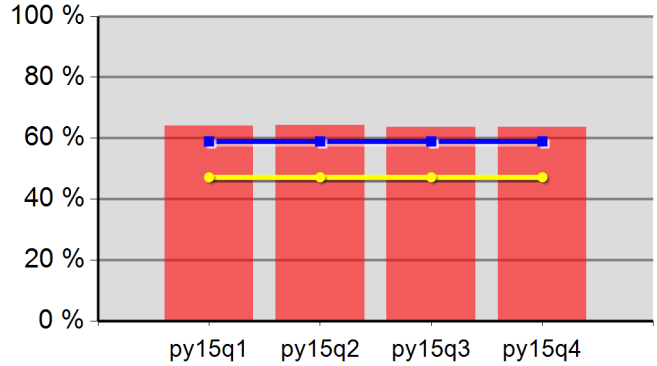
Lane Workforce Partnership  
Program Year 2015 Rolling 4 Quarters

**Adult Entered Employment**



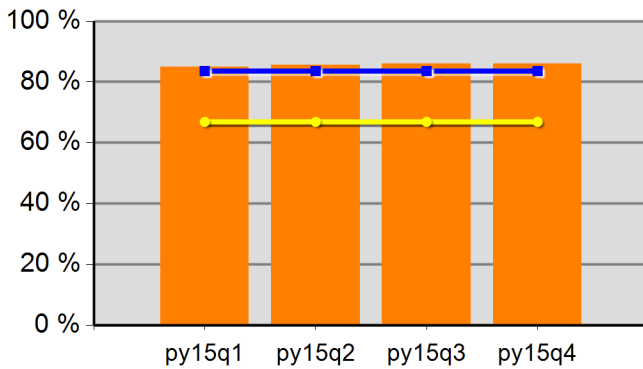
64.1%	64.2%	63.6%	63.4%
Neg Level	57.6%	80% Neg	46.1%

**DW Entered Employment**



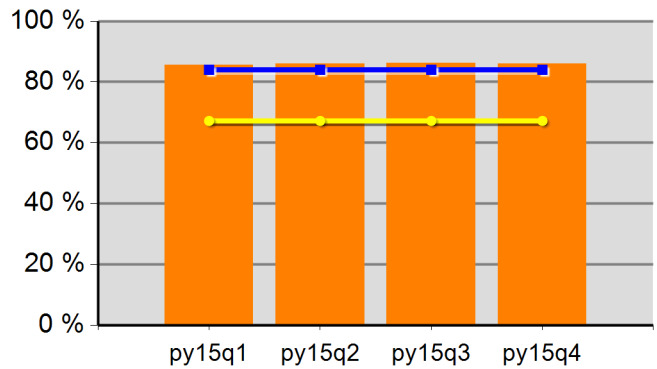
64.0%	64.3%	63.7%	63.7%
Neg Level	59.0%	80% Neg	47.2%

**Adult Retention**



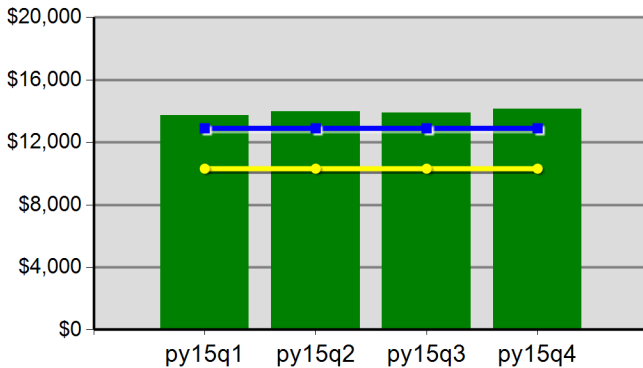
85.0%	85.6%	86.0%	85.9%
Neg Level	83.6%	80% Neg	66.9%

**DW Retention**



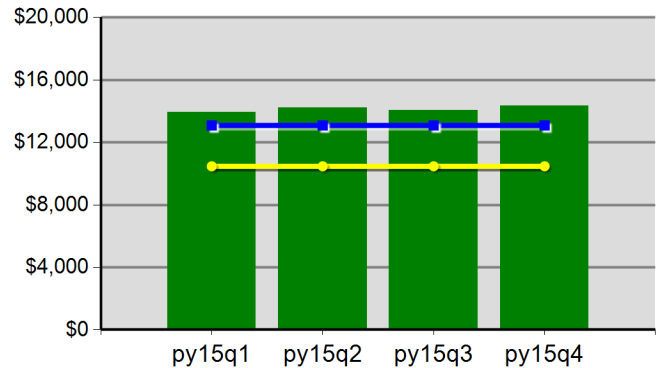
85.5%	86.1%	86.3%	86.0%
Neg Level	84.0%	80% Neg	67.2%

**Adult Average Earnings**



\$137.4	\$139.9	\$139.0	\$141.2
Neg Level	\$12,900.0	80% Neg	\$10,320.0

**DW Average Earnings**

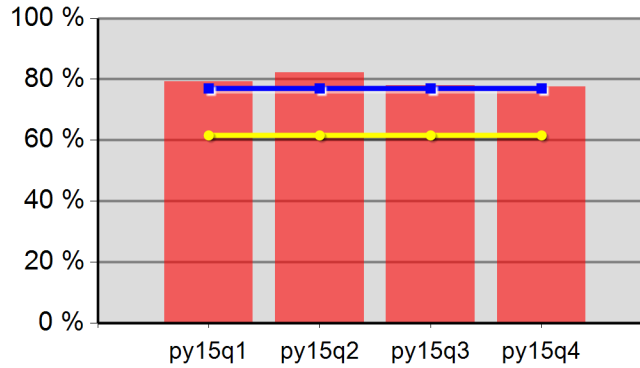


\$139.5	\$142.1	\$140.6	\$143.2
Neg Level	\$13,090.0	80% Neg	\$10,472.0

Office of Community Colleges and Workforce Development

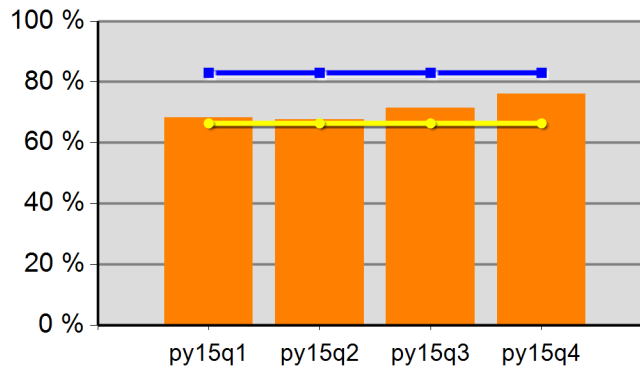
Lane Workforce Partnership  
Program Year 2015 Rolling 4 Quarters

**Youth Employment or Education**



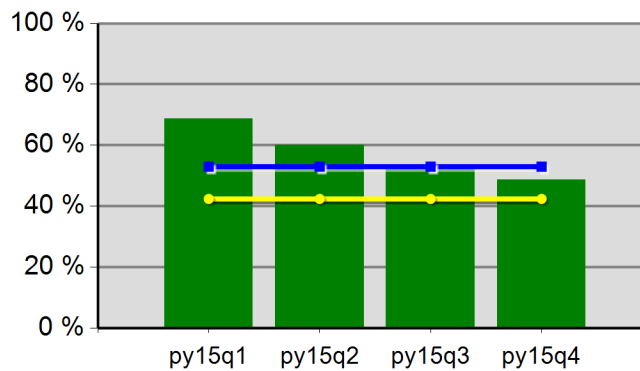
79.2%	82.1%	77.9%	77.6%
Neg Level	77.0%	80% Neg	61.6%

**Youth Degree or Certificate**



68.2%	67.6%	71.4%	76.1%
Neg Level	83.0%	80% Neg	66.4%

**Youth Literacy and Numeracy Gains**



68.8%	60.0%	52.2%	48.6%
Neg Level	53.0%	80% Neg	42.4%

# WIA Annual Report (ETA Form 9091)

Southwestern Oregon WIB PY-2015 Qtr-4 (Year-to-Date)

**Table M - Participation Levels**

Reported Information	Total Participants Served	Total Exitters
Total Adult Customers	8,663	6,908
Total Adults (self-service only)	2,361	1,116
WIA Adult	8,661	6,905
WIA Dislocated Worker	4,479	4,212
Total Youth (14-21)	155	74
Younger Youth (14-18)	64	30
Older Youth (19-21)	91	44
Out-of-School Youth	88	25
In-School Youth	67	49

**Table B - Adult Program Results**

Reported Information	Negotiated Performance Level (80%)	Actual Performance	
Entered Employment Rate	60.0% (48.0%)	61.8%	2,993 4,845
Employment Retention Rate	84.0% (67.2%)	84.1%	3,505 4,170
Six-Month Average Earnings	\$13,500.0 (\$10,800.0)	\$12,482.2	43,650,096 3,497
Employment and Credential Rate		23.1%	24 104
Credential Attainment Rate		31.8%	35 110

**Table C - Outcomes for Adult Special Populations**

Reported Information	Public Assistance Recipients Receiving Intensive or Training Services		Veterans		Individuals with Disabilities		Older Individuals	
Entered Employment Rate	70.1%	61 87	60.6%	299 493	38.8%	71 183	56.6%	584 1,031
Employment Retention Rate	84.0%	79 94	80.5%	318 395	81.1%	73 90	85.5%	696 814
Six-Month Average Earnings	\$12,696.1	952,204 75	\$13,498.8	4,279,131 317	\$10,152.2	741,110 73	\$12,670.2	8,818,436 696
Employment and Credential Rate	16.7%	9 54	13.3%	* *	50.0%	* *	23.1%	* *

**Table D - Other Outcome Information by Service Level for the Adult Program**

Reported Information	Individuals Who Only Received Core Services		Individuals who Only Received Core and Intensive Services		Individuals who Received Training Services	
Entered Employment Rate	61.2%	2,861 4,675	74.0%	57 77	80.6%	75 93
Employment Retention Rate	84.0%	3,340 3,976	85.7%	78 91	84.5%	87 103
Six-Month Average Earnings	\$12,455.4	41,601,196 3,340	\$11,795.1	872,840 74	\$14,169.4	1,176,060 83

\* Data suppressed for confidentiality purposes

WIA Annual Report (ETA Form 9091)

Southwestern Oregon WIB PY-2015 Qtr-4 (Year-to-Date)

**Table E - Dislocated Worker Program Results**

Reported Information	Negotiated Performance Level (80%)	Actual Performance	
Entered Employment Rate	60.0% (48.0%)	63.0%	2,300 3,653
Employment Retention Rate	84.0% (67.2%)	84.8%	2,707 3,194
Six-Month Average Earnings	\$13,500.0 (\$10,800.0)	\$12,862.3	34,715,439 2,699
Employment and Credential Rate		19.5%	16 82
Credential Attainment Rate		22.9%	19 83

**Table F - Outcomes for Dislocated Worker Special Populations**

Reported Information	Veterans		Individuals with Disabilities		Older Individuals		Displaced Homemakers	
Entered Employment Rate	61.6%	247 401	38.9%	51 131	58.4%	487 834	55.4%	222 401
Employment Retention Rate	79.9%	250 313	80.6%	54 67	86.1%	596 692	78.9%	232 294
Six-Month Average Earnings	\$13,668.6	3,403,484 249	\$10,645.1	574,833 54	\$12,857.7	7,663,188 596	\$10,473.2	2,387,884 228
Employment and Credential Rate	13.3%	*	50.0%	*	23.1%	*	23.5%	*

**Table G - Other Outcome Information by Service Level for the Dislocated Worker Program**

Reported Information	Individuals Who Only Received Core Services		Individuals who Only Received Core and Intensive Services		Individuals who Received Training Services	
Entered Employment Rate	62.3%	2,191 3,518	78.3%	47 60	82.7%	62 75
Employment Retention Rate	84.7%	2,577 3,042	89.3%	67 75	81.8%	63 77
Six-Month Average Earnings	\$12,849.1	33,112,033 2,577	\$11,293.8	711,511 63	\$15,116.9	891,895 59

**Table L - Other Reported Information**

Reported Information	Adults		Dislocated Workers		Older Youth	
12-Month Employment Retention	83.1%	3,689 4,438	83.4%	2,853 3,420	76.9%	20 26
12-Month Earnings Increase/Replacement	(\$378.9)	-1,678,395 4,430	\$96.1	36,464,049 37,962,023	\$7,320.6	183,015 25
Entered Non-Traditional Employment	0.2%	6 2,993	0.3%	6 2,300	3.8%	* *
Wages At Entered Employment	\$5,080.5	15,165,151 2,985	\$5,234.0	12,006,822 2,294	\$3,601.0	90,025 25
Employment Related Training	32.0%	24 75	33.9%	21 62		

\* Data suppressed for confidentiality purposes

# WIA Annual Report (ETA Form 9091)

Southwestern Oregon WIB PY-2015 Qtr-4 (Year-to-Date)

**Table H1 - Youth (14-21) Program Results**

Reported Information	Negotiated Performance Level (80%)	Actual Performance	
Placement in Employment or Education	72.0% (57.6%)	87.0%	40 46
Attainment of a Degree or Certificate	72.0% (57.6%)	88.4%	61 69
Literacy and Numeracy Gains	60.0% (48.0%)	100.0%	6 6
Credential Attainment Rate		88.4%	61 69

**Table H1.A - Outcomes for Youth Special Populations**

Reported Information	Public Assistance Recipients		Veterans		Individuals with Disabilities		Out-of-School Youth	
Placement in Employment or Education	91.7%	11 12		0 0	100.0%	*	85.7%	12 14
Attainment of a Degree or Certificate	92.3%	12 13		0 0	100.0%	*	100.0%	13 13
Literacy and Numeracy Gains		0 0		0 0		0 0	100.0%	6 6

**Table H2 - Older Youth (19-21) Results**

Reported Information	Negotiated Performance Level (80%)	Actual Performance	
Entered Employment Rate		86.7%	26 30
Employment Retention Rate		77.8%	21 27
Six Months Earnings Increase		\$4,229.6	114,200 27
Credential Rate		78.1%	25 32

**Table I - Outcomes for Older Youth Special Populations**

Reported Information	Public Assistance Recipients		Veterans		Individuals with Disabilities		Out-of-School Youth	
Entered Employment Rate	100.0%	*		0 0		0 0	90.9%	10 11
Employment Retention Rate	85.7%	6 7		0 0		0 0	88.2%	15 17
Six Months Earnings Increase	\$8,423.4	58,964 7		0 0		0 0	\$7,123.7	121,103 17
Credential Rate	75.0%	*		0 0		0 0	66.7%	8 12

**Table P - Veteran Priority of Service**

Reported Information	Total Participants Served	Total Exitters
Received a Service During the Entry Period	647	647
Received a Staff Assisted Service During the Entry Period	647	472

\* Data suppressed for confidentiality purposes

# WIA Annual Report (ETA Form 9091)

Southwestern Oregon WIB PY-2015 Qtr-4 (Year-to-Date)

**Table Q - Veterans' Outcomes by Special Populations**

Reported Information	Adults		Dislocated Workers		Older Youth	
Entered Employment Rate	63.6%	96 151	100.0%	8 8	57.1%	12 21
Employment Retention Rate	83.5%	96 115	85.7%	6 7		0 0
Six-Month Average Earnings	\$13,736.6	1,304,980 95	\$16,363.8	* *		0 0

Performance was Calculated: 8/12/2016 1:35:12 PM

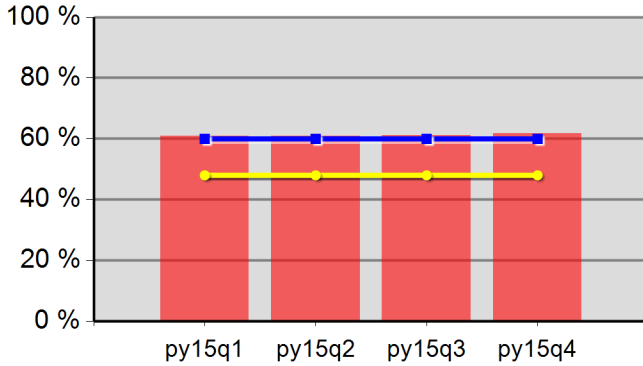
\* Data suppressed for confidentiality purposes



Office of Community Colleges and Workforce Development

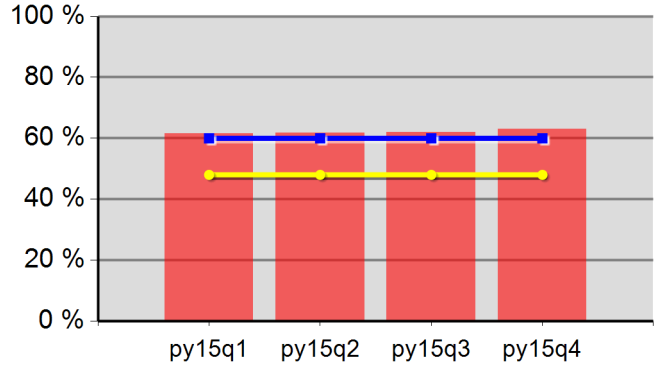
Southwestern Oregon WIB  
Program Year 2015 Rolling 4 Quarters

**Adult Entered Employment**



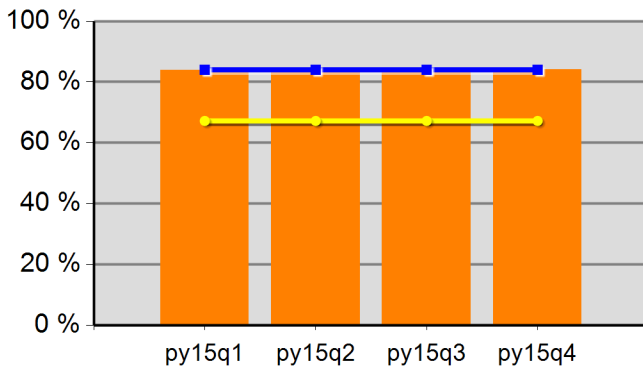
60.9%	61.0%	61.2%	61.8%
Neg Level	60.0%	80% Neg	48.0%

**DW Entered Employment**



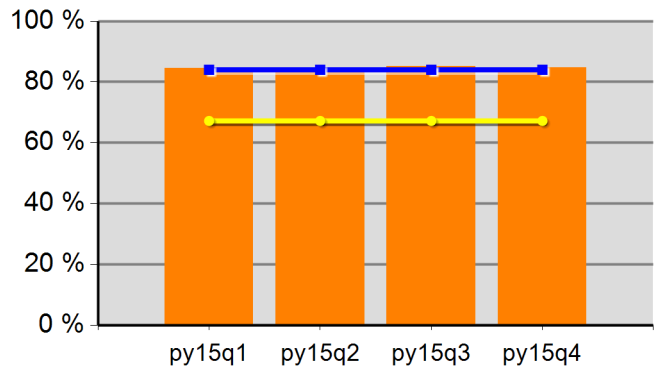
61.6%	61.8%	62.0%	63.0%
Neg Level	60.0%	80% Neg	48.0%

**Adult Retention**



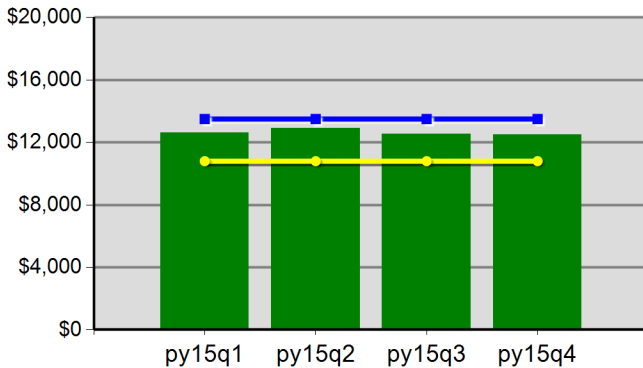
83.8%	83.6%	84.5%	84.1%
Neg Level	84.0%	80% Neg	67.2%

**DW Retention**



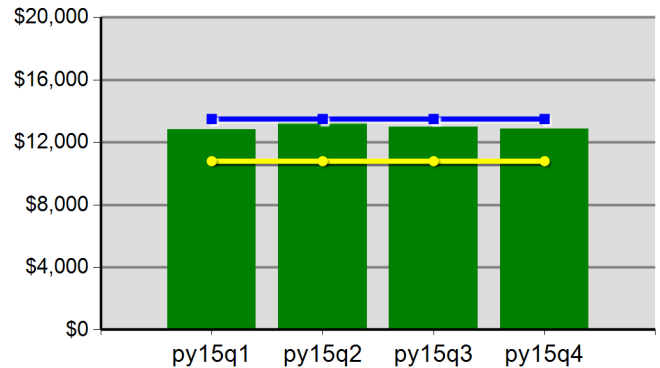
84.5%	84.0%	85.1%	84.8%
Neg Level	84.0%	80% Neg	67.2%

**Adult Average Earnings**



\$126.2	\$129.0	\$125.6	\$124.8
Neg Level	\$13,500.0	80% Neg	\$10,800.0

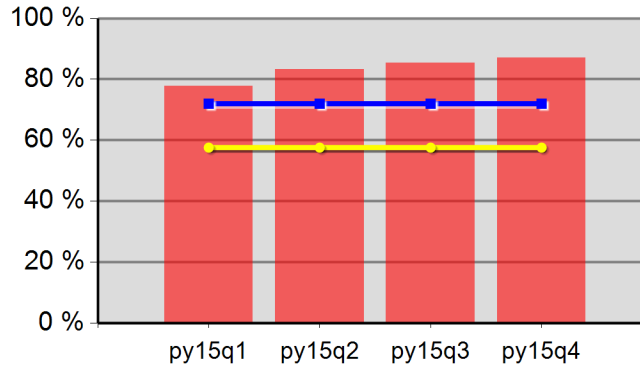
**DW Average Earnings**



\$128.4	\$132.4	\$129.9	\$128.6
Neg Level	\$13,500.0	80% Neg	\$10,800.0

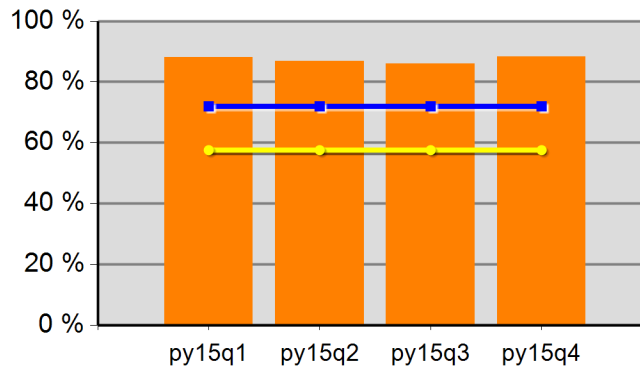
Southwestern Oregon WIB  
 Program Year 2015 Rolling 4 Quarters

**Youth Employment or Education**



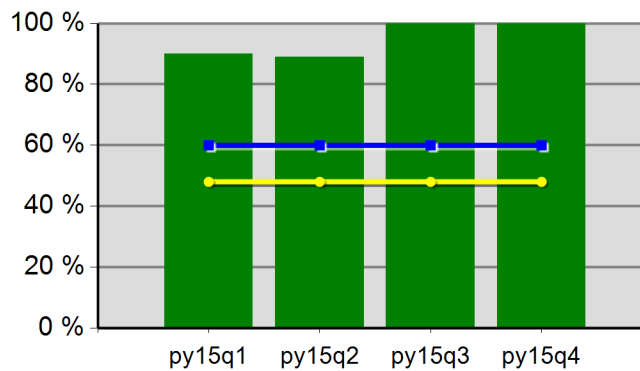
77.8%	83.3%	85.4%	87.0%
Neg Level	72.0%	80% Neg	57.6%

**Youth Degree or Certificate**



88.1%	86.8%	85.9%	88.4%
Neg Level	72.0%	80% Neg	57.6%

**Youth Literacy and Numeracy Gains**



90.0%	88.9%	100.0%	100.0%
Neg Level	60.0%	80% Neg	48.0%

# WIA Annual Report (ETA Form 9091)

Rogue Workforce Partnership PY-2015 Qtr-4 (Year-to-Date)

**Table M - Participation Levels**

Reported Information	Total Participants Served	Total Exitters
Total Adult Customers	13,495	11,141
Total Adults (self-service only)	2,169	1,073
WIA Adult	13,495	11,138
WIA Dislocated Worker	8,457	7,732
Total Youth (14-21)	268	162
Younger Youth (14-18)	163	115
Older Youth (19-21)	105	47
Out-of-School Youth	179	92
In-School Youth	89	70

**Table B - Adult Program Results**

Reported Information	Negotiated Performance Level (80%)	Actual Performance	
Entered Employment Rate	58.0% (46.4%)	63.6%	5,443 8,552
Employment Retention Rate	84.0% (67.2%)	83.9%	5,794 6,908
Six-Month Average Earnings	\$12,200.0 (\$9,760.0)	\$13,317.1	77,119,272 5,791
Employment and Credential Rate		15.5%	57 368
Credential Attainment Rate		18.0%	68 378

**Table C - Outcomes for Adult Special Populations**

Reported Information	Public Assistance Recipients Receiving Intensive or Training Services		Veterans		Individuals with Disabilities		Older Individuals	
Entered Employment Rate	61.7%	92 149	56.8%	463 815	47.7%	142 298	58.4%	1,067 1,827
Employment Retention Rate	80.8%	126 156	81.0%	460 568	76.9%	103 134	82.4%	1,145 1,390
Six-Month Average Earnings	\$9,253.7	1,165,971 126	\$15,577.4	7,165,606 460	\$10,332.3	1,064,232 103	\$13,084.8	14,982,132 1,145
Employment and Credential Rate	21.1%	12 57	2.9%	* *	11.1%	* *	8.1%	* *

**Table D - Other Outcome Information by Service Level for the Adult Program**

Reported Information	Individuals Who Only Received Core Services		Individuals who Only Received Core and Intensive Services		Individuals who Received Training Services	
Entered Employment Rate	63.1%	4,872 7,726	64.1%	344 537	78.5%	227 289
Employment Retention Rate	83.7%	5,174 6,180	82.2%	352 428	89.3%	268 300
Six-Month Average Earnings	\$13,441.0	69,543,753 5,174	\$11,112.5	3,911,598 352	\$13,826.1	3,663,920 265

\* Data suppressed for confidentiality purposes

WIA Annual Report (ETA Form 9091)

Rogue Workforce Partnership PY-2015 Qtr-4 (Year-to-Date)

**Table E - Dislocated Worker Program Results**

Reported Information	Negotiated Performance Level (80%)	Actual Performance	
Entered Employment Rate	58.0% (46.4%)	64.5%	4,413 6,841
Employment Retention Rate	84.0% (67.2%)	84.5%	4,714 5,578
Six-Month Average Earnings	\$12,200.0 (\$9,760.0)	\$13,616.4	64,160,631 4,712
Employment and Credential Rate		14.7%	34 232
Credential Attainment Rate		19.1%	45 236

**Table F - Outcomes for Dislocated Worker Special Populations**

Reported Information	Veterans		Individuals with Disabilities		Older Individuals		Displaced Homemakers	
Entered Employment Rate	57.5%	395 687	51.6%	116 225	60.4%	951 1,574	59.2%	356 601
Employment Retention Rate	82.5%	416 504	77.8%	84 108	83.2%	1,011 1,215	80.4%	337 419
Six-Month Average Earnings	\$15,679.6	6,522,712 416	\$10,579.0	888,637 84	\$13,143.8	13,288,374 1,011	\$10,678.8	3,598,753 337
Employment and Credential Rate	3.3%	* *	14.3%	* *	6.5%	* *	10.9%	* *

**Table G - Other Outcome Information by Service Level for the Dislocated Worker Program**

Reported Information	Individuals Who Only Received Core Services		Individuals who Only Received Core and Intensive Services		Individuals who Received Training Services	
Entered Employment Rate	64.0%	4,005 6,260	66.1%	252 381	78.0%	156 200
Employment Retention Rate	84.5%	4,302 5,093	82.1%	248 302	89.6%	164 183
Six-Month Average Earnings	\$13,746.8	59,138,858 4,302	\$10,844.9	2,689,523 248	\$14,396.6	2,332,250 162

**Table L - Other Reported Information**

Reported Information	Adults		Dislocated Workers		Older Youth	
12-Month Employment Retention	84.1%	5,933 7,058	84.5%	4,851 5,740	81.5%	22 27
12-Month Earnings Increase/Replacement	(\$155.9)	-1,100,148 7,055	\$98.0	62,822,003 64,117,729	\$4,052.6	109,420 27
Entered Non-Traditional Employment	0.1%	7 5,443	0.1%	* *		0 14
Wages At Entered Employment	\$5,240.1	28,506,233 5,440	\$5,428.9	23,946,895 4,411	\$3,267.6	45,747 14
Employment Related Training	35.7%	81 227	35.9%	56 156		

\* Data suppressed for confidentiality purposes

# WIA Annual Report (ETA Form 9091)

Rogue Workforce Partnership PY-2015 Qtr-4 (Year-to-Date)

### Table H1 - Youth (14-21) Program Results

Reported Information	Negotiated Performance Level (80%)	Actual Performance	
Placement in Employment or Education	65.0% (52.0%)	72.3%	86 119
Attainment of a Degree or Certificate	50.0% (40.0%)	63.2%	72 114
Literacy and Numeracy Gains	65.0% (52.0%)	26.5%	22 83
Credential Attainment Rate		63.2%	72 114

### Table H1.A - Outcomes for Youth Special Populations

Reported Information	Public Assistance Recipients		Veterans		Individuals with Disabilities		Out-of-School Youth	
Placement in Employment or Education	70.0%	63 90		0 0	80.0%	* *	62.1%	36 58
Attainment of a Degree or Certificate	64.0%	55 86		0 0	50.0%	* *	40.0%	18 45
Literacy and Numeracy Gains	28.1%	16 57		0 0	50.0%	* *	26.5%	22 83

### Table H2 - Older Youth (19-21) Results

Reported Information	Negotiated Performance Level (80%)	Actual Performance	
Entered Employment Rate		48.3%	14 29
Employment Retention Rate		88.5%	23 26
Six Months Earnings Increase		\$4,066.9	105,740 26
Credential Rate		22.2%	8 36

### Table I - Outcomes for Older Youth Special Populations

Reported Information	Public Assistance Recipients		Veterans		Individuals with Disabilities		Out-of-School Youth	
Entered Employment Rate	41.7%	10 24		0 0		* *	50.0%	14 28
Employment Retention Rate	93.3%	14 15		0 0	50.0%	* *	86.4%	19 22
Six Months Earnings Increase	\$4,269.8	64,047 15		0 0	(\$1,751.5)	* *	\$3,236.9	71,211 22
Credential Rate	14.3%	* *		0 0		* *	22.9%	8 35

### Table P - Veteran Priority of Service

Reported Information	Total Participants Served	Total Exiters
Received a Service During the Entry Period	1,019	1,019
Received a Staff Assisted Service During the Entry Period	1,019	836

\* Data suppressed for confidentiality purposes

WIA Annual Report (ETA Form 9091)

Rogue Workforce Partnership PY-2015 Qtr-4 (Year-to-Date)

**Table Q - Veterans' Outcomes by Special Populations**

Reported Information	Adults		Dislocated Workers		Older Youth	
Entered Employment Rate	50.4%	115 228	68.4%	13 19	43.5%	10 23
Employment Retention Rate	76.5%	114 149	91.7%	11 12		0 0
Six-Month Average Earnings	\$15,556.6	1,773,458 114	\$12,758.2	140,340 11		0 0

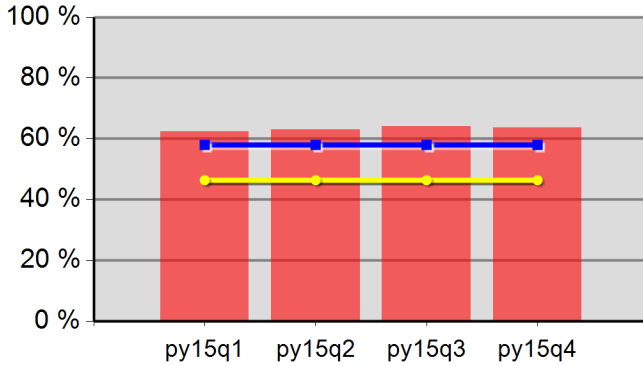
Performance was Calculated: 8/12/2016 1:35:27 PM

\* Data suppressed for confidentiality purposes

Office of Community Colleges and Workforce Development

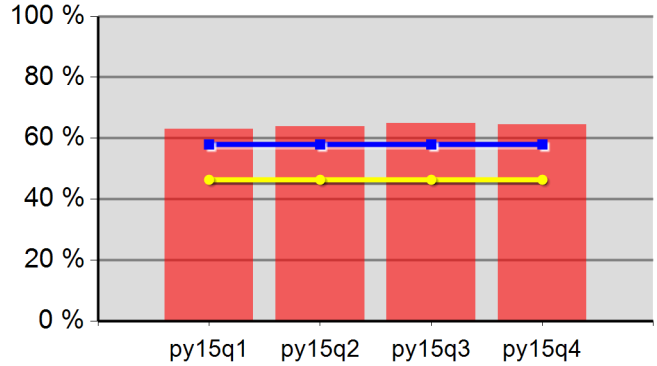
Rogue Workforce Partnership  
Program Year 2015 Rolling 4 Quarters

**Adult Entered Employment**



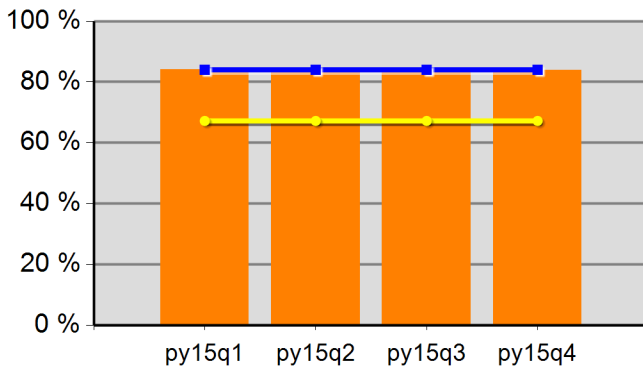
62.3%	63.0%	64.0%	63.6%
Neg Level	58.0%	80% Neg	46.4%

**DW Entered Employment**



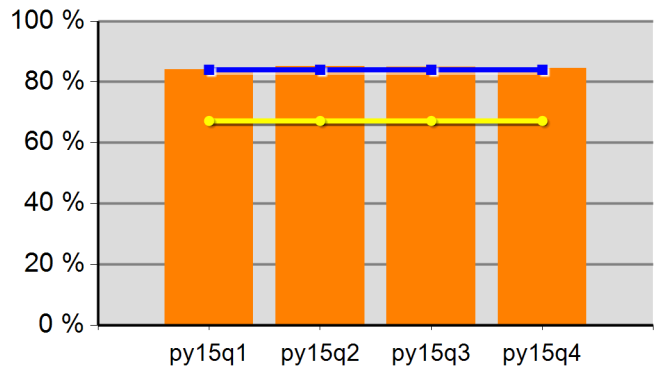
63.1%	63.9%	64.9%	64.5%
Neg Level	58.0%	80% Neg	46.4%

**Adult Retention**



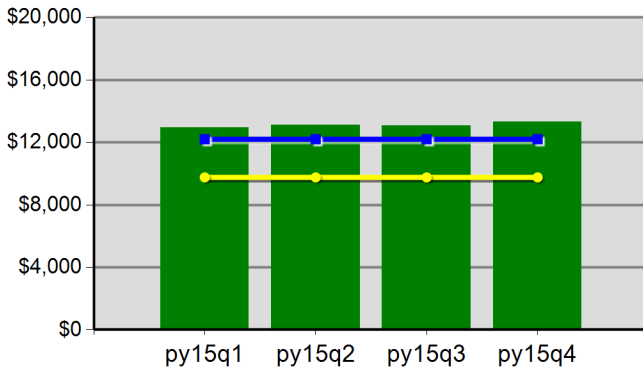
84.1%	84.6%	84.4%	83.9%
Neg Level	84.0%	80% Neg	67.2%

**DW Retention**



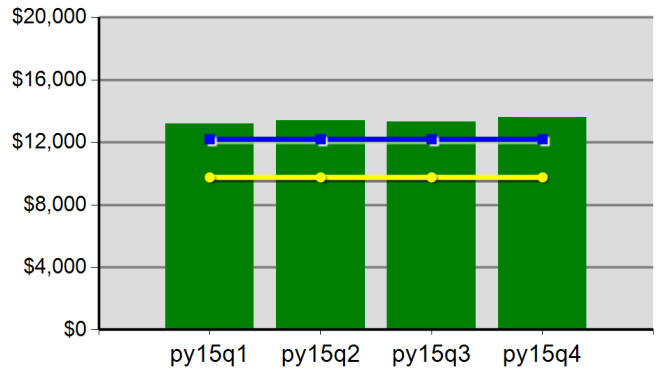
84.1%	85.1%	85.0%	84.5%
Neg Level	84.0%	80% Neg	67.2%

**Adult Average Earnings**



\$129.6	\$131.1	\$130.6	\$133.2
Neg Level	\$12,200.0	80% Neg	\$9,760.0

**DW Average Earnings**

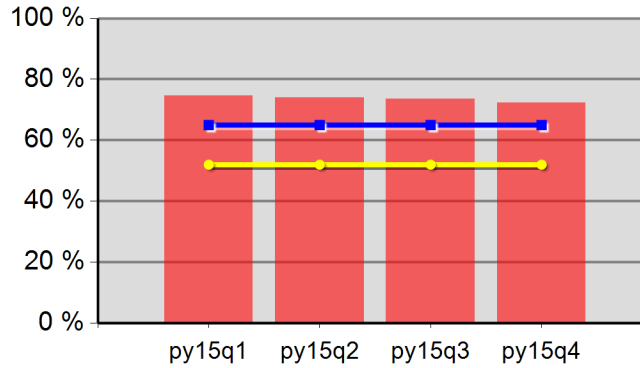


\$132.0	\$133.8	\$133.2	\$136.2
Neg Level	\$12,200.0	80% Neg	\$9,760.0

Office of Community Colleges and Workforce Development

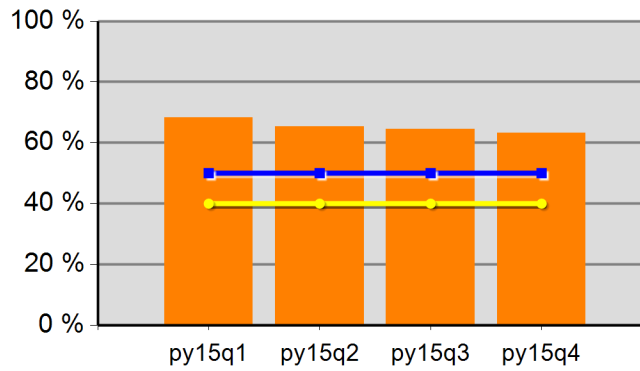
Rogue Workforce Partnership  
Program Year 2015 Rolling 4 Quarters

**Youth Employment or Education**



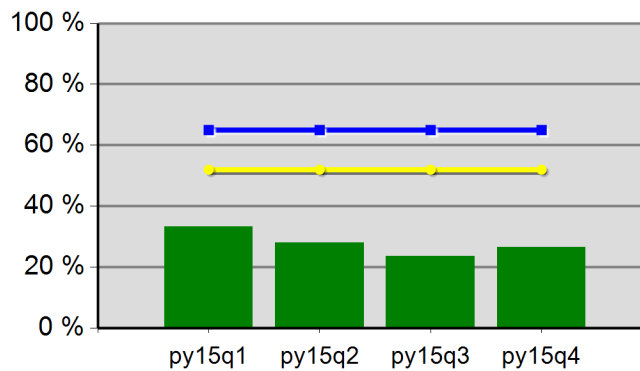
74.7%	73.9%	73.5%	72.3%
Neg Level	65.0%	80% Neg	52.0%

**Youth Degree or Certificate**



68.3%	65.3%	64.4%	63.2%
Neg Level	50.0%	80% Neg	40.0%

**Youth Literacy and Numeracy Gains**



33.3%	28.1%	23.5%	26.5%
Neg Level	65.0%	80% Neg	52.0%



# WIA Annual Report (ETA Form 9091)

East Cascades WIB PY-2015 Qtr-4 (Year-to-Date)

**Table M - Participation Levels**

Reported Information	Total Participants Served	Total Exitters
Total Adult Customers	16,726	14,331
Total Adults (self-service only)	3,689	1,929
WIA Adult	16,724	14,329
WIA Dislocated Worker	9,738	9,380
Total Youth (14-21)	211	97
Younger Youth (14-18)	172	73
Older Youth (19-21)	39	24
Out-of-School Youth	150	49
In-School Youth	61	48

**Table B - Adult Program Results**

Reported Information	Negotiated Performance Level (80%)	Actual Performance	
Entered Employment Rate	60.0% (48.0%)	64.8%	6,562 10,131
Employment Retention Rate	84.0% (67.2%)	85.0%	7,626 8,967
Six-Month Average Earnings	\$13,500.0 (\$10,800.0)	\$14,648.7	111,710,728 7,626
Employment and Credential Rate		28.3%	54 191
Credential Attainment Rate		34.0%	66 194

**Table C - Outcomes for Adult Special Populations**

Reported Information	Public Assistance Recipients Receiving Intensive or Training Services		Veterans		Individuals with Disabilities		Older Individuals	
Entered Employment Rate	80.6%	75 93	59.5%	553 929	44.5%	174 391	60.5%	1,194 1,975
Employment Retention Rate	83.6%	51 61	81.9%	636 777	74.2%	132 178	85.4%	1,442 1,688
Six-Month Average Earnings	\$10,869.3	554,336 51	\$16,515.1	10,503,594 636	\$11,910.1	1,572,137 132	\$14,408.9	20,777,584 1,442
Employment and Credential Rate	19.1%	9 47	12.5%	* *	25.0%	* *	9.5%	* *

**Table D - Other Outcome Information by Service Level for the Adult Program**

Reported Information	Individuals Who Only Received Core Services		Individuals who Only Received Core and Intensive Services		Individuals who Received Training Services	
Entered Employment Rate	64.3%	6,311 9,821	76.2%	109 143	85.0%	142 167
Employment Retention Rate	85.0%	7,425 8,733	86.3%	101 117	85.5%	100 117
Six-Month Average Earnings	\$14,695.6	109,114,693 7,425	\$12,034.3	1,215,462 101	\$13,805.7	1,380,573 100

\* Data suppressed for confidentiality purposes

WIA Annual Report (ETA Form 9091)

East Cascades WIB PY-2015 Qtr-4 (Year-to-Date)

**Table E - Dislocated Worker Program Results**

Reported Information	Negotiated Performance Level (80%)	Actual Performance	
Entered Employment Rate	60.0% (48.0%)	66.1%	5,230 7,908
Employment Retention Rate	84.0% (67.2%)	86.1%	6,095 7,076
Six-Month Average Earnings	\$13,500.0 (\$10,800.0)	\$15,250.2	92,949,911 6,095
Employment and Credential Rate		30.5%	53 174
Credential Attainment Rate		36.2%	64 177

**Table F - Outcomes for Dislocated Worker Special Populations**

Reported Information	Veterans		Individuals with Disabilities		Older Individuals		Displaced Homemakers	
Entered Employment Rate	60.0%	448 747	45.1%	120 266	62.2%	1,016 1,634	59.0%	452 766
Employment Retention Rate	83.8%	526 628	75.2%	91 121	86.4%	1,234 1,428	82.6%	480 581
Six-Month Average Earnings	\$16,871.5	8,874,423 526	\$12,320.6	1,121,173 91	\$14,658.2	18,088,263 1,234	\$10,859.8	5,212,715 480
Employment and Credential Rate	18.2%	* *	33.3%	* *	10.0%	* *	7.7%	* *

**Table G - Other Outcome Information by Service Level for the Dislocated Worker Program**

Reported Information	Individuals Who Only Received Core Services		Individuals who Only Received Core and Intensive Services		Individuals who Received Training Services	
Entered Employment Rate	65.6%	5,014 7,640	73.0%	84 115	86.3%	132 153
Employment Retention Rate	86.1%	5,927 6,882	89.0%	73 82	84.8%	95 112
Six-Month Average Earnings	\$15,319.1	90,796,096 5,927	\$11,674.7	852,255 73	\$13,700.6	1,301,560 95

**Table L - Other Reported Information**

Reported Information	Adults		Dislocated Workers		Older Youth	
12-Month Employment Retention	84.6%	8,060 9,529	84.9%	6,473 7,628	68.8%	11 16
12-Month Earnings Increase/Replacement	(\$400.4)	-3,815,610 9,529	\$94.5	92,087,829 97,447,603	\$3,858.3	57,875 15
Entered Non-Traditional Employment	0.1%	9 6,562	0.2%	8 5,230	7.7%	* *
Wages At Entered Employment	\$5,690.6	37,330,319 6,560	\$5,958.5	31,156,997 5,229	\$3,914.2	43,056 11
Employment Related Training	25.4%	36 142	24.2%	32 132		

\* Data suppressed for confidentiality purposes

# WIA Annual Report (ETA Form 9091)

East Cascades WIB PY-2015 Qtr-4 (Year-to-Date)

**Table H1 - Youth (14-21) Program Results**

Reported Information	Negotiated Performance Level (80%)	Actual Performance	
Placement in Employment or Education	72.0% (57.6%)	79.3%	65 82
Attainment of a Degree or Certificate	72.0% (57.6%)	67.9%	55 81
Literacy and Numeracy Gains	60.0% (48.0%)	63.3%	19 30
Credential Attainment Rate		67.1%	55 82

**Table H1.A - Outcomes for Youth Special Populations**

Reported Information	Public Assistance Recipients		Veterans		Individuals with Disabilities		Out-of-School Youth	
Placement in Employment or Education	77.2%	44 57		0 0		0 0	68.9%	31 45
Attainment of a Degree or Certificate	63.5%	33 52		0 0		0 0	57.5%	23 40
Literacy and Numeracy Gains	56.5%	13 23		0 0		* *	63.3%	19 30

**Table H2 - Older Youth (19-21) Results**

Reported Information	Negotiated Performance Level (80%)	Actual Performance	
Entered Employment Rate		86.7%	13 15
Employment Retention Rate		75.0%	9 12
Six Months Earnings Increase		\$3,782.2	41,604 11
Credential Rate		36.8%	7 19

**Table I - Outcomes for Older Youth Special Populations**

Reported Information	Public Assistance Recipients		Veterans		Individuals with Disabilities		Out-of-School Youth	
Entered Employment Rate	84.6%	11 13		0 0		0 0	83.3%	10 12
Employment Retention Rate	88.9%	8 9	100.0%	* *		0 0	81.8%	9 11
Six Months Earnings Increase	\$4,622.1	36,977 8	\$5,144.0	* *		0 0	\$4,138.8	41,388 10
Credential Rate	31.3%	* *		0 0		0 0	14.3%	* *

**Table P - Veteran Priority of Service**

Reported Information	Total Participants Served	Total Exiters
Received a Service During the Entry Period	1,217	1,217
Received a Staff Assisted Service During the Entry Period	1,217	964

\* Data suppressed for confidentiality purposes

# WIA Annual Report (ETA Form 9091)

East Cascades WIB PY-2015 Qtr-4 (Year-to-Date)

**Table Q - Veterans' Outcomes by Special Populations**

Reported Information	Adults		Dislocated Workers		Older Youth	
Entered Employment Rate	56.5%	200 354	80.0%	*	36.2%	17 47
Employment Retention Rate	77.9%	190 244	77.8%	7 9		0 0
Six-Month Average Earnings	\$16,284.0	3,093,959 190	\$14,136.6	98,956 7		0 0

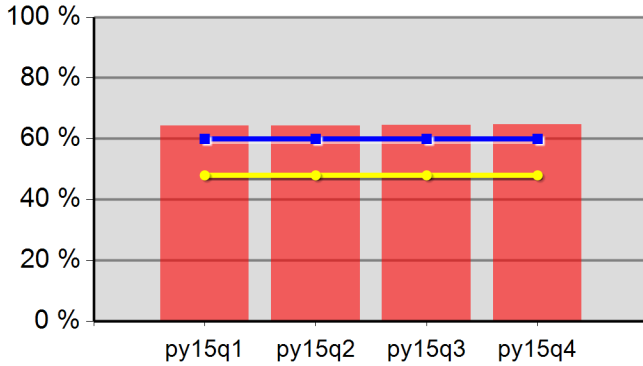
Performance was Calculated: 8/12/2016 1:35:41 PM

\* Data suppressed for confidentiality purposes

Office of Community Colleges and Workforce Development

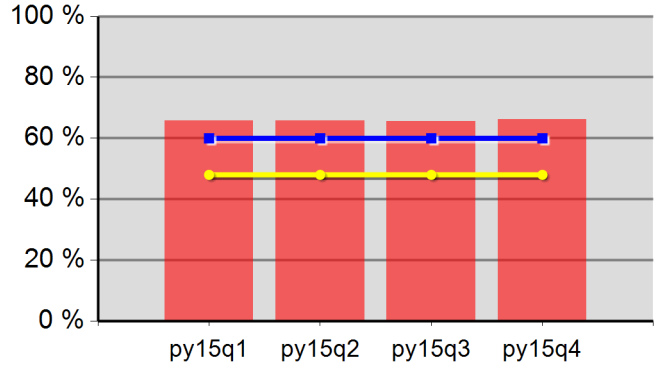
East Cascades WIB  
Program Year 2015 Rolling 4 Quarters

**Adult Entered Employment**



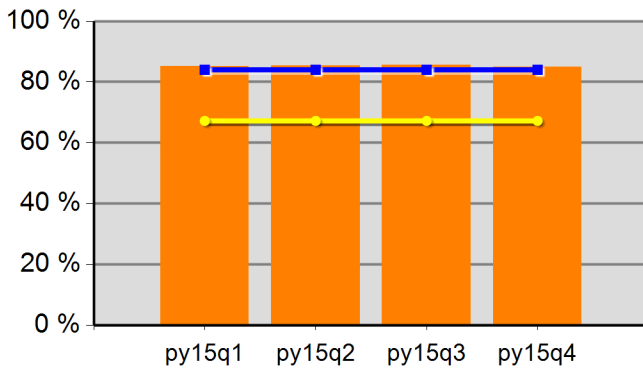
64.2%	64.3%	64.5%	64.8%
Neg Level	60.0%	80% Neg	48.0%

**DW Entered Employment**



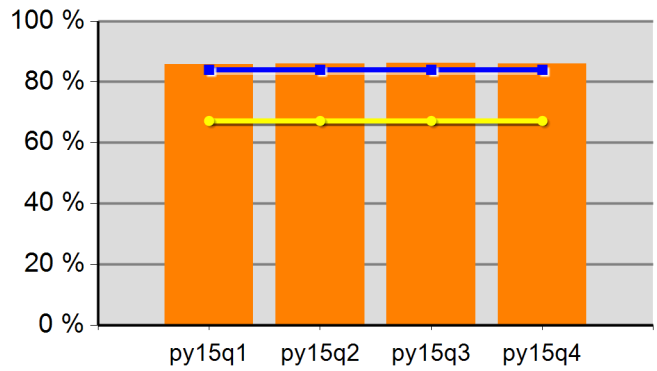
65.8%	65.7%	65.6%	66.1%
Neg Level	60.0%	80% Neg	48.0%

**Adult Retention**



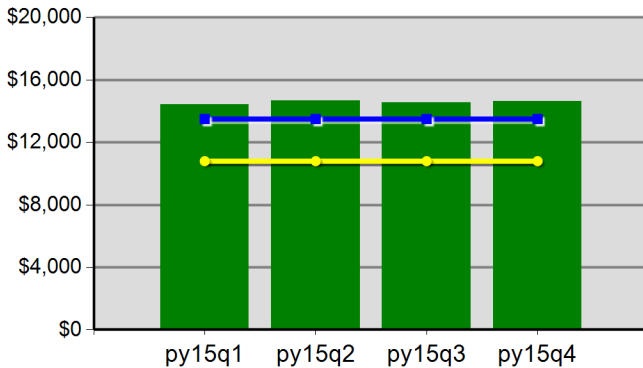
85.2%	85.4%	85.5%	85.0%
Neg Level	84.0%	80% Neg	67.2%

**DW Retention**



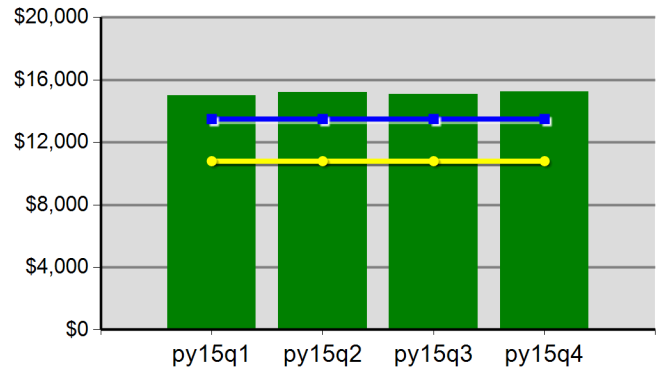
85.7%	86.1%	86.2%	86.1%
Neg Level	84.0%	80% Neg	67.2%

**Adult Average Earnings**



\$144.4	\$146.6	\$145.4	\$146.5
Neg Level	\$13,500.0	80% Neg	\$10,800.0

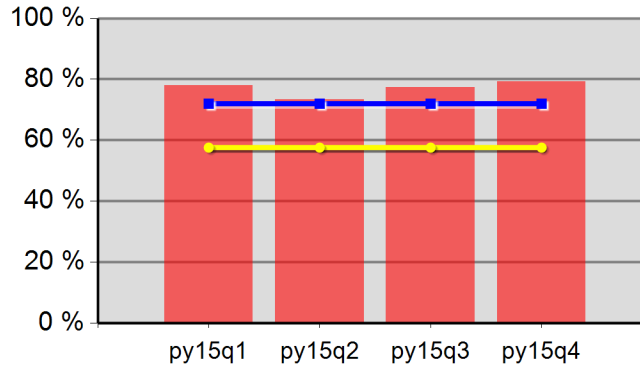
**DW Average Earnings**



\$149.9	\$152.2	\$150.9	\$152.5
Neg Level	\$13,500.0	80% Neg	\$10,800.0

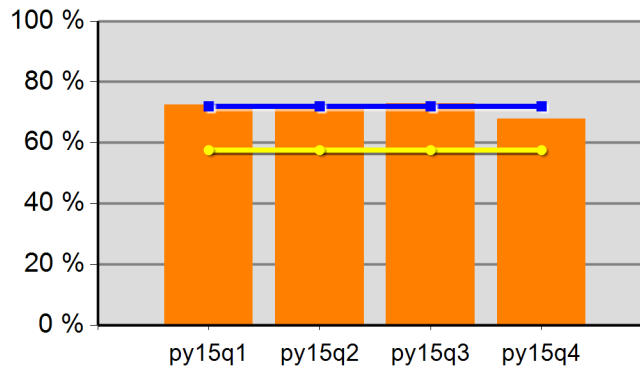
East Cascades WIB  
 Program Year 2015 Rolling 4 Quarters

**Youth Employment or Education**



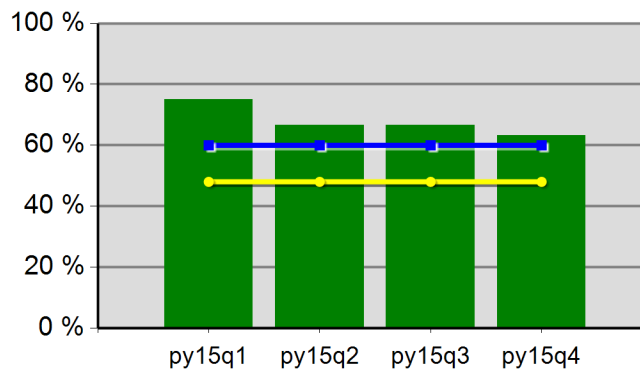
77.9%	73.3%	77.4%	79.3%
Neg Level	72.0%	80% Neg	57.6%

**Youth Degree or Certificate**



72.5%	71.4%	72.9%	67.9%
Neg Level	72.0%	80% Neg	57.6%

**Youth Literacy and Numeracy Gains**



75.0%	66.7%	66.7%	63.3%
Neg Level	60.0%	80% Neg	48.0%

# WIA Annual Report (ETA Form 9091)

Eastern Oregon WIB PY-2015 Qtr-4 (Year-to-Date)

**Table M - Participation Levels**

Reported Information	Total Participants Served	Total Exitters
Total Adult Customers	9,233	7,283
Total Adults (self-service only)	2,731	1,315
WIA Adult	9,233	7,282
WIA Dislocated Worker	4,727	4,423
Total Youth (14-21)	109	79
Younger Youth (14-18)	59	59
Older Youth (19-21)	50	20
Out-of-School Youth	81	27
In-School Youth	28	52

**Table B - Adult Program Results**

Reported Information	Negotiated Performance Level (80%)	Actual Performance	
Entered Employment Rate	60.0% (48.0%)	67.7%	3,194 4,719
Employment Retention Rate	84.0% (67.2%)	85.2%	3,617 4,244
Six-Month Average Earnings	\$13,500.0 (\$10,800.0)	\$14,932.5	53,995,791 3,616
Employment and Credential Rate		26.6%	21 79
Credential Attainment Rate		36.3%	29 80

**Table C - Outcomes for Adult Special Populations**

Reported Information	Public Assistance Recipients Receiving Intensive or Training Services		Veterans		Individuals with Disabilities		Older Individuals	
Entered Employment Rate	72.5%	50 69	65.2%	227 348	49.6%	70 141	64.7%	575 889
Employment Retention Rate	82.6%	71 86	84.6%	247 292	68.8%	53 77	83.7%	636 760
Six-Month Average Earnings	\$13,594.9	965,241 71	\$18,259.7	4,510,145 247	\$11,372.3	602,732 53	\$15,709.3	9,991,100 636
Employment and Credential Rate	25.9%	7 27	28.6%	*		*		0 10

**Table D - Other Outcome Information by Service Level for the Adult Program**

Reported Information	Individuals Who Only Received Core Services		Individuals who Only Received Core and Intensive Services		Individuals who Received Training Services	
Entered Employment Rate	67.4%	3,050 4,524	72.8%	99 136	76.3%	45 59
Employment Retention Rate	85.3%	3,369 3,951	84.3%	172 204	85.4%	76 89
Six-Month Average Earnings	\$14,405.8	48,518,602 3,368	\$23,421.1	4,028,425 172	\$19,062.7	1,448,764 76

\* Data suppressed for confidentiality purposes

# WIA Annual Report (ETA Form 9091)

Eastern Oregon WIB PY-2015 Qtr-4 (Year-to-Date)

### Table E - Dislocated Worker Program Results

Reported Information	Negotiated Performance Level (80%)	Actual Performance	
Entered Employment Rate	60.0% (48.0%)	69.8%	2,496 3,578
Employment Retention Rate	84.0% (67.2%)	86.1%	2,798 3,250
Six-Month Average Earnings	\$13,500.0 (\$10,800.0)	\$15,924.3	44,540,134 2,797
Employment and Credential Rate		27.5%	19 69
Credential Attainment Rate		36.2%	25 69

### Table F - Outcomes for Dislocated Worker Special Populations

Reported Information	Veterans		Individuals with Disabilities		Older Individuals		Displaced Homemakers	
Entered Employment Rate	64.8%	188 290	54.0%	54 100	68.9%	515 748	57.3%	172 300
Employment Retention Rate	85.5%	201 235	70.2%	40 57	83.3%	529 635	78.0%	170 218
Six-Month Average Earnings	\$20,030.5	4,026,126 201	\$11,890.0	475,601 40	\$16,052.3	8,491,692 529	\$10,474.6	1,780,688 170
Employment and Credential Rate	28.6%	* *		* *		0 9	25.0%	* *

### Table G - Other Outcome Information by Service Level for the Dislocated Worker Program

Reported Information	Individuals Who Only Received Core Services		Individuals who Only Received Core and Intensive Services		Individuals who Received Training Services	
Entered Employment Rate	69.4%	2,376 3,424	76.7%	79 103	80.4%	41 51
Employment Retention Rate	86.2%	2,598 3,014	84.2%	139 165	85.9%	61 71
Six-Month Average Earnings	\$15,281.3	39,685,583 2,597	\$26,382.4	3,667,159 139	\$19,465.4	1,187,391 61

### Table L - Other Reported Information

Reported Information	Adults		Dislocated Workers		Older Youth	
12-Month Employment Retention	84.1%	3,476 4,134	84.2%	2,649 3,146	100.0%	6 6
12-Month Earnings Increase/Replacement	(\$256.5)	-1,060,029 4,133	\$94.9	38,674,881 40,732,000	\$11,035.8	66,215 6
Entered Non-Traditional Employment	0.1%	* *	0.1%	* *		0 8
Wages At Entered Employment	\$5,552.4	17,712,231 3,190	\$5,829.7	14,527,675 2,492	\$4,192.9	29,350 7
Employment Related Training	28.9%	13 45	26.8%	11 41		

\* Data suppressed for confidentiality purposes



# WIA Annual Report (ETA Form 9091)

Eastern Oregon WIB PY-2015 Qtr-4 (Year-to-Date)

**Table H1 - Youth (14-21) Program Results**

Reported Information	Negotiated Performance Level (80%)	Actual Performance	
Placement in Employment or Education	72.0% (57.6%)	74.0%	54 73
Attainment of a Degree or Certificate	72.0% (57.6%)	67.6%	50 74
Literacy and Numeracy Gains	60.0% (48.0%)	58.3%	14 24
Credential Attainment Rate		67.6%	50 74

**Table H1.A - Outcomes for Youth Special Populations**

Reported Information	Public Assistance Recipients		Veterans		Individuals with Disabilities		Out-of-School Youth	
Placement in Employment or Education	75.5%	37 49		0 0	33.3%	*	72.7%	16 22
Attainment of a Degree or Certificate	68.0%	34 50		0 0	75.0%	*	33.3%	6 18
Literacy and Numeracy Gains	57.9%	11 19		0 0	100.0%	*	58.3%	14 24

**Table H2 - Older Youth (19-21) Results**

Reported Information	Negotiated Performance Level (80%)	Actual Performance	
Entered Employment Rate		80.0%	8 10
Employment Retention Rate		90.0%	9 10
Six Months Earnings Increase		\$7,155.8	71,558 10
Credential Rate		21.4%	* *

**Table I - Outcomes for Older Youth Special Populations**

Reported Information	Public Assistance Recipients		Veterans		Individuals with Disabilities		Out-of-School Youth	
Entered Employment Rate	66.7%	*		0 0	100.0%	*	77.8%	7 9
Employment Retention Rate	100.0%	9 9		0 0		0 0	90.0%	9 10
Six Months Earnings Increase	\$7,950.9	71,558 9		0 0		0 0	\$7,155.8	71,558 10
Credential Rate	22.2%	*		0 0	100.0%	*	15.4%	* *

**Table P - Veteran Priority of Service**

Reported Information	Total Participants Served	Total Exitters
Received a Service During the Entry Period	579	579
Received a Staff Assisted Service During the Entry Period	579	413

\* Data suppressed for confidentiality purposes

# WIA Annual Report (ETA Form 9091)

Eastern Oregon WIB PY-2015 Qtr-4 (Year-to-Date)

**Table Q - Veterans' Outcomes by Special Populations**

Reported Information	Adults		Dislocated Workers		Older Youth	
Entered Employment Rate	58.5%	72 123	83.3%	*	100.0%	*
Employment Retention Rate	82.4%	70 85	87.5%	7 8		0 0
Six-Month Average Earnings	\$17,083.3	1,195,834 70	\$22,488.6	157,420 7		0 0

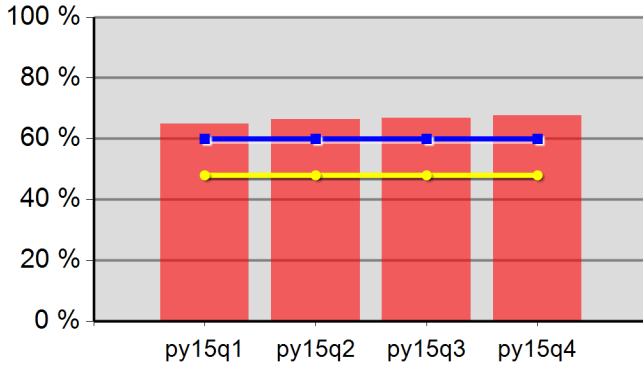
Performance was Calculated: 8/12/2016 1:35:55 PM

\* Data suppressed for confidentiality purposes

Office of Community Colleges and Workforce Development

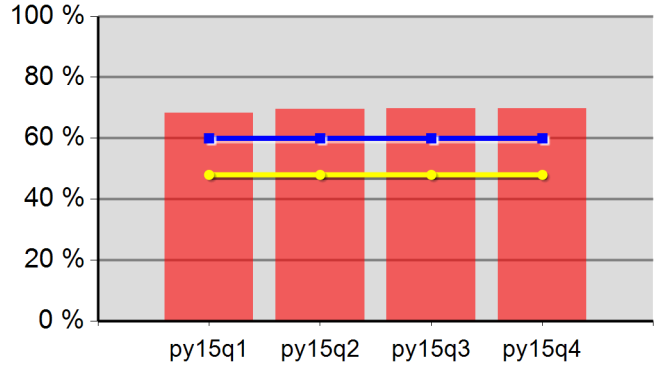
Eastern Oregon WIB  
Program Year 2015 Rolling 4 Quarters

**Adult Entered Employment**



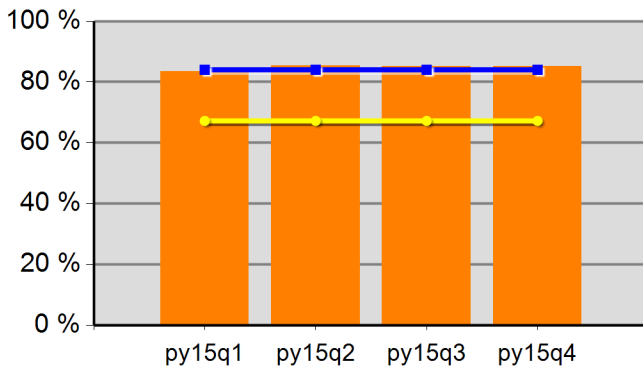
65.0%	66.4%	66.8%	67.7%
Neg Level	60.0%	80% Neg	48.0%

**DW Entered Employment**



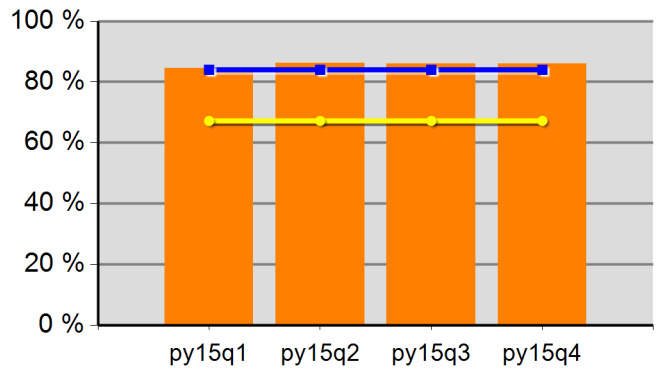
68.2%	69.6%	69.7%	69.8%
Neg Level	60.0%	80% Neg	48.0%

**Adult Retention**



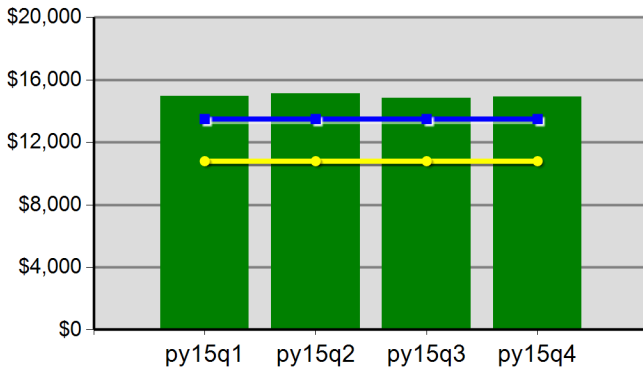
83.4%	85.3%	85.2%	85.2%
Neg Level	84.0%	80% Neg	67.2%

**DW Retention**



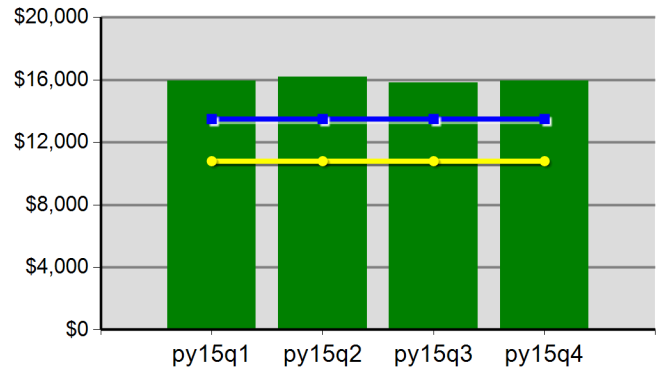
84.5%	86.2%	86.1%	86.1%
Neg Level	84.0%	80% Neg	67.2%

**Adult Average Earnings**



\$149.6	\$151.4	\$148.2	\$149.3
Neg Level	\$13,500.0	80% Neg	\$10,800.0

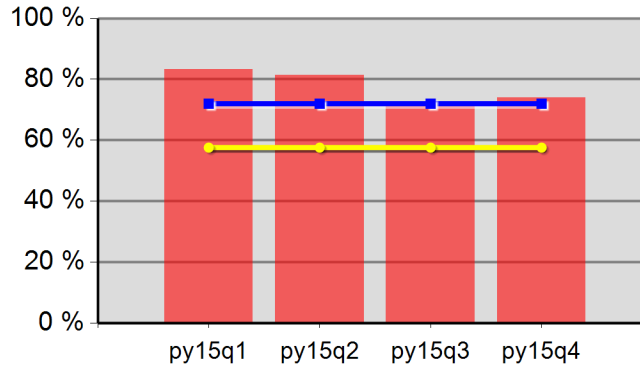
**DW Average Earnings**



\$159.3	\$161.8	\$158.0	\$159.2
Neg Level	\$13,500.0	80% Neg	\$10,800.0

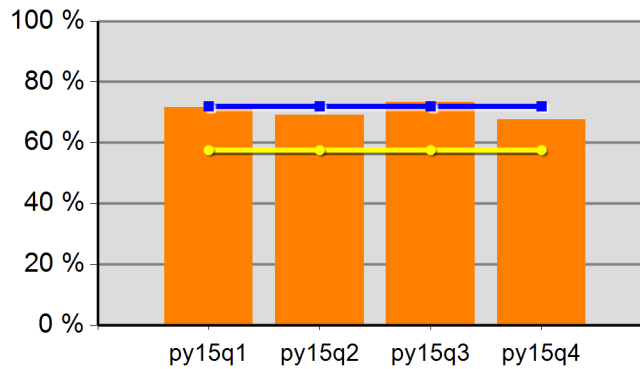
Eastern Oregon WIB  
 Program Year 2015 Rolling 4 Quarters

**Youth Employment or Education**



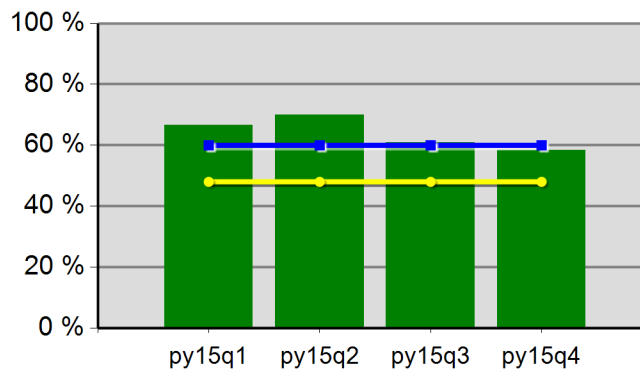
83.3%	81.4%	71.4%	74.0%
Neg Level	72.0%	80% Neg	57.6%

**Youth Degree or Certificate**



71.7%	69.2%	73.3%	67.6%
Neg Level	72.0%	80% Neg	57.6%

**Youth Literacy and Numeracy Gains**



66.7%	70.0%	60.9%	58.3%
Neg Level	60.0%	80% Neg	48.0%